

NC Institutional Galleries

continued from Page 56

University, Winthrop University, and eventually retired from the University of North Carolina at Charlotte. **Upstairs Gallery, Apr. 1 - May 27** - "All Riot on the Western Front," featuring works by Tyler Stephens of Lenoir. The exhibit featuring hand cut collage artwork by Stephens. Tyler "Sour Steve" Stephens is the living embodiment of the new generation of DIY punk artists: a master of all trades from hand-crafted, surreal, tongue-in-cheek collage bits to writing, recording, and producing three full length punk rock albums from his studio apartment. Sour Steve has been creating thought-provoking collage works since 2019. Hours: Tue.-Fri., 9am-5pm. Contact: 828/754-2486 or at (www.caldwellarts.com).

My Happy Place Gallery, 210 Main Street NW, Lenoir. Ongoing - Featuring works by local artists working in all forms of art in our cooperative gallery. We are members of the Caldwell Chamber of Commerce with its advantages. Being a member also entitles your work to be shown and sold in our satellite partnership locations at The Local Bean in Hudson and the Blue Ridge Room, the large conference room at Bo's which accommodates 40 pieces of hanging work that changes every quarter. We also partnered with the City of Hudson in helping The Hudson Art Festival which will become an annual event established just last year. We are a busy, proactive group working together to help promote the arts and encouraging each other to keep creating and growing. Hours: Tue.-Fri., 11am-7pm and Sat., 11am-3pm. Contact: call 828/572-2688 or e-mail ti (myhappyplacegallery@gmail.com).

Lumberton

Inner Peace Center for the Arts, 700 N. Roberts Avenue, Lumberton. Ongoing - We are an art gallery designed to educate, enlighten, enrich and entertain patrons of all ages while providing leadership and support to advance the visual and performing arts in our community. Hours: Wed.-Fri., 11am-5pm. Contact: 910/733-1046 or at (www.ipcars.com).

Marshall

Flow Gallery, 14 S. Main St., Marshall. Ongoing - Flow is a cooperative gallery owned, operated and curated by artists, offering for sale the best of local and regional crafted objects and arts, traditional and contemporary. Hours: Tue.-Sat., 10am-4pm or by appt. Contact: 828/649-1686 or at (www.flowmarshall.com).

Marshall High Studios, 115 Blannahassatt Island, Marshall. Apr. 22, 5-8pm & Apr. 23, 9am-4pm - "10th Anniversary Show and Sale of the Potters of Madison County". Admission is free. Food and refreshments will be available. For further info visit (www.pottersofmadison-county.com).

Mars Hill

Mars Landing Galleries, 37 Library Street, Mars Hill. Ongoing - Mars Landing Galleries is a standout gallery for the works of artists and makers nestled in and around the Blue Ridge Mountains. Each exhibit space is curated as a solo-show, in an effort to provide viewers ample space for contemplation, connection, and ultimate appreciation of exquisite works not readily displayed locally. Hours: Wed.-Sat., 11am-5 or by appt. Contact: 828/747-7267.

Weizenblatt Gallery, Moore Fine Art Building, Mars Hill University, 79 Cascade Street, Mars Hill. Apr 6 - 22 - "Juried Student Exhibition". Hours: Mon., Wed., Fri., 10am-4pm and Tue. & Thur., 9am-11:30am then 2-4pm. Contact: Skip Rohde, Weizenblatt Gallery Director at 828/273-6476 or visit (<https://www.mhu.edu/about/what-to-do-and-see/weizenblatt-gallery/>).

Marshville

Marshville Museum and Cultural Center, 201 North Elm Street, Marshville. Ongoing - Featuring paintings by local artist Mary Erickson. Other well known artists from Marshville include Hooper Turner, Sally Griffin, Richard Smith, Frank Faulkner, Louise Napier, and Stewart Allen. Hours: Mon.-Thur., by appt. only; Fri.-Sat., 10am-4pm; & Sun. 1-4pm. Contact: 704-624-6214 or at (<http://mmcc1893.com/index.html>).

Mooresville

Depot Visual Arts Center, 103 West Center Ave., Mooresville. Ongoing - MAGical Gallery shop, a great source for unique gifts. Hours: Tue.-Fri., noon-4pm & Sat., 10am-2pm. Contact: 704/663-6661 or at (www.MAGart.org).

Morehead City

Carolina Artist Gallery, 9th and Arendell Street, Morehead City, between the First Methodist Church and the Salvation Army Morehead City. Ongoing - The co-op continues to nurture emerging artists, gives them an opportunity to show and sell their work. The Gallery enjoys a steady stream of visitors. Vacationers and local residents purchase art and gifts. Nonmember artists frequently stop in for inspiration. Hours: Thur.-Sat., 11am-5pm. Contact: 252/726-7550 or at (www.carolinaartistgallery.com).

Morganton

KATZ Arts Collective, 116 W. Union Street, Morganton. Ongoing - It is a collective of artists, both online and in-house. It operates as a non-profit; any money left over after expenses goes back into the cooperative. Many different specialties including weaving, painting, photography, pottery, sculpture, and more are represented at the KATZ. Included in its amenities are a free children's area, display galleries and shelves, rental studios, and an event space. Hours: N/A. Contact: visit us on Facebook (<https://www.facebook.com/thekatzartcollective/>) or e-mail us at (thekatzartscollective@gmail.com).

New Bern

Community Artists Gallery & Studios, Inc., 504 South Front Street, New Bern. Ongoing - We serve Craven, Pamlico, and Jones counties. Operated by member artists themselves on an exclusively volunteer basis, it's a great place to discover distinctive, affordable art for your home or office--or to find a truly unique gift. Visit our Gallery and Studios pages to see what's currently on exhibit--and on our easels! Community Artists Gallery & Studios supports working studio space for fifteen artists and exhibits nearly a dozen additional artists at any given time. Our members are engaged in creating jewelry, photography, weaving, found object art, sculpture, ceramics, digital art, watercolor, oil, baskets, stained glass, and acrylic paintings. Hours: Tue., Thur., Fri., & Sat., 10am-4pm. Contact: 252/571-8566 or visit (www.communityartistsgallery.org).

North Wilkesboro

Wilkes Art Gallery, 913 C. Street, North Wilkesboro. Ongoing - Founded in 1962 in the parlor of Annie Winkler's home, the Wilkes Art Gallery has experienced transformations over the years. The most dramatic of these was the 2004 move into the renovated 1925 North Wilkesboro Post Office building. WAG offers a variety of classes, workshops, meet-the-artists events and special outreach projects. WAG hosts exhibitions that offer community members a chance to show their work and admission is always free. Visit our online gift shop. Hours: Tue.-Fri., 10am-5pm and Sat., 10am-2pm. Contact: 336/667-2841 or at (www.wilkesartgallery.org).

Old Fort

Arrowhead Artists and Artisans League Inc., 78 Catawba Avenue, Suite C-D, next to the parker hosiery building, 2 minutes from Exit 73 on Interstate I-40, Old Fort. Ongoing - The main Gallery space is about 1800 square feet, with an open, industrial feel. Art, ranging from traditional to abstract and mixed media, hangs on the walls. On the main floor are displays of various types of fine crafts, such as jewelry, pottery, fiber art, hand crafted baskets, and hand turned wooden bowls. You might even see a welded "junk yard" critter or two. After viewing all of the various arts and crafts, visitors can walk through a wide archway on the right to view more fine art and craft work and talk to the artists and students in several studios and the AGS classroom. If a studio door is open, visitors are being invited to step inside and enjoy the work. Currently, our Gallery and studio artists and artisans include: Lorelle Bacon, Ann Whisenaut, Karen Piquette, David Kaylor, Dawn Driebus, Len Eskew, Wayne Stroud, Susan Taylor, Cathy Green, Anne Bevan, John Sullivan, Evelyn Chrisawn, Tim Muench, Chuck Aldridge, Charles Davis, Fredreen Bernatovicz, Anne Allison, Darlene Matzer, Billie Haney, Marguerite Welty, Jean Ryan, Kasha Baxter, Linda Magnus, Kim Hostetter, Bonnie Burgin, Sonya Russell, Helen Sullivan, Janet Bennett, and Sabrina Miller. Hours: Tue.-Sat., 10am-6pm & Sun., 1-4pm. Contact: 828/668-1100 or at (<http://arrowhead-art.org/>).

Outer Banks Area

Dare County Arts Council, 300 Queen Elizabeth, Manteo. Courtroom Gallery, May

3 - 28 - "25th Annual Mollie Fearing Memorial Art Show," juried by studio jeweler, metalsmith and enamelist Kathryn Osgood. There will be a special opening reception at Dare County Arts Council's Gallery in downtown Manteo from 2-4pm on Sunday, May 1. Hours: Tue.-Fri., 10am-5pm and Sat., 10am-4pm. Contact: 252/475-4843 or at (www.DareArts.org).

Pembroke

A.D. Gallery, University of NC at Pembroke, Locklear Hall, 1 University Dr, Pembroke. Ongoing - The A.D. Gallery is sponsored by the Art Department of the University of North Carolina at Pembroke. Serving the university and local community, the gallery provides a venue for student and faculty work, as well as that of local, regional, national and international artists. The gallery helps fulfill the department's goal of providing outstanding educational opportunities for its students by bringing quality visual arts to the university and the community at large. Hours: Mon.-Fri., 9am-6pm. Contact: e-mail to (joseph.begnaud@uncp.edu) or visit (www.uncp.edu/departments/art/ad-gallery/).

The Museum of the Southeast American Indian, Old Main (first floor) at the University of North Carolina Pembroke, 1 University Drive, Pembroke. Ongoing - As part of the Southeast American Indian Studies Program at UNC Pembroke, The Museum of the Southeast American Indian maximizes the capacity of the University to address the complex historical, cultural and contemporary issues facing American Indian communities in North Carolina and the American Southeast. The Museum's cross-disciplinary collaborations greatly enhance the University's programs of research, service, outreach and instruction. The Museum is a multi-faceted museum and resource for scholarly research and community outreach. While the Museum contains exhibits of authentic Indian artifacts, arts and crafts from Indian communities all over the Americas, our primary focus is on tribes from the American Southeast. Many items come from North Carolina Native communities, with special emphasis on Robeson County Indian people. Specific focus is placed on the largest North Carolina tribe, the Lumbee, but our outreach activities have extended into Virginia and South Carolina with plans for further outreach throughout the Southeast. Hours: Mon.-Fri., 9am-5pm. We typically close for lunch from noon-1pm. Contact: call 910/521-6282 or e-mail to (nativemuseum@uncp.edu).

ALTERNATE ART SPACES - Pembroke Artist Market Pembroke, at the UNCP Entrepreneurship Incubator, 202 Main Street, Pembroke. 2nd Sat. every month - Featuring handmade art and jewelry by local artists. Hours: 10am-4pm. Contact: 910/775-4065.

Penland

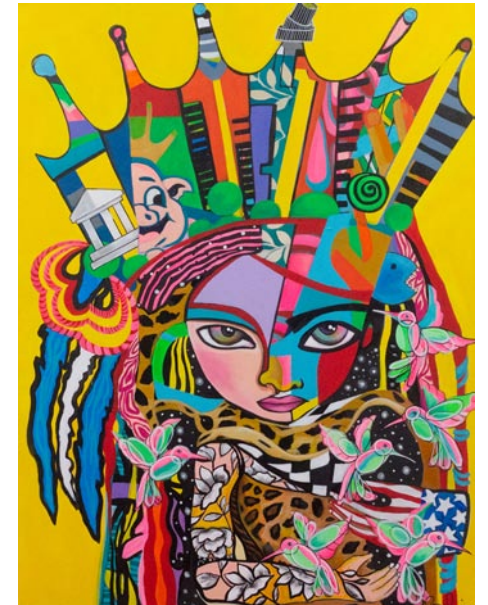
Penland Gallery & Visitors Center, Penland School of Crafts, 3135 Conley Ridge Rd, Penland. Ongoing - On display outside the Penland Gallery are sculptures by ceramic artist Catherine White, large steel sculptures by Daniel T. Beck, and works by Hoss Haley. There is also an interactive, outdoor installation by Jeff Goodman titled, "The Kindness for Imaginary Things.. Hours: Tue.-Sat., 10am-5pm & Sun. noon-5pm. Contact: 828/765-6211 or at (<http://penland.org/gallery/>).

Raleigh

CAM Raleigh, 409 W. Martin Street, between Harrington and West streets, Raleigh. Main Gallery, Through Oct. 31 - "UNSEEN: Clarence Heyward". Born and raised in Brooklyn, NY, Clarence Heyward is a painter and collagist. He relocated to North Carolina to study Art Education at North Carolina Central University. He creates paintings and collages as an exploration of his culture. Clarence's artistic practice is based in the questioning of his identity and circumstance. He seeks ways to engage in dialogues that ultimately leave him connected to those who experience his work. His work is personal. Although creating from his perspective, the human element present in the work creates a connection for all. **Independent Weekly Gallery, Through Aug. 14** - "Titus Heagins". Exhibition Development for Transgender Series, photography. In the fall of 2021, CAM Raleigh will begin working with photographer Titus Heagins on the development of a major new exhibition devoted to the artist's long involvement photographing the transgender communities in the United States and Cuba. Exhibition Lab will provide the public with a real time, behind the scenes look at the development of a future CAM exhibition. During this yearlong experimental phase visitors will witness the difficulties of exhibit development within a complex, multilayered subject dealing with issues of race, gender, fairness, community, family, and Love. Exhibition Lab will culminate in a Main Gallery multi media exhibition, publication, and public programming series dedicated to the artist's work, opening in

the fall of 2022. Admission: Yes. Hours: Mon., 11am-6:30pm; Wed.-Fri., 11am-6:30pm; Sat. & Sun., noon-5pm; and 1st & 3rd Fri., open till 9pm. Contact: 919/513-0946 or at (<http://camraleigh.org/>).

Collective Arts Gallery & Ceramic Supply, 8801 Leadmine Road, Suite 103, Raleigh. Ongoing - Featuring works by local and nationally renowned artists on permanent exhibit. Hours: Tue.-Fri. 11am-7pm & Sat., 10am-6pm. Contact: 919/844-0765.



Work by Rosalia Torres Weiner

Diamante Arts & Cultural Center, 5104 Western Blvd., Suite B, Raleigh. Through May 13 - "Mi Gente, Un Reflejo / My People, A Reflection," featuring a solo exhibition of works by Rosalia Torres Weiner, a Charlotte-based artist, activist, and LatinX community leader, (including a few AR, augmented reality works, which with a downloaded app on your iPhone or iPad, which allows people to hear each painting's subject speak their own story). Torres Weiner's work celebrates the rich history and changing demographics of the South. She uses her art to document social conditions and raise awareness about issues affecting immigrant communities like family separation, racism, and moving beyond common stereotypes. **Ongoing** - The Diamante Arts & Cultural Center is a non-profit (501c3), a community grounded, arts and culture organization dedicated to the preservation, development, and promotion of the culture, heritage, and artistic expressions of the diverse Latino/Hispanic population in North Carolina. Hours: Tue.-Fri., 11am-5pm. Contact: 919/852-0075 or at (www.diamanteacc.org).

Frankie G. Weems Art Gallery, Gaddy-Hamrick Art Center, Meredith College, 3800 Hillsborough Street, Raleigh. Apr. 11 - Sept. 22 - "The 39th Annual Juried Student Art Exhibition". A reception will be held on Apr. 21, from 4:30-6:30pm, with an awards ceremony at 5:30pm. **Apr. 4 - May 6** - "Senior Exhibition". A reception will be held on Apr. 19, from 4:30-6:30, with a Gallery Talk at 5:30pm. Hours: Mon.-Fri., 9am-5pm & Sat.-Sun., 2-5pm. Contact: 919/760-8600 or at (<https://www.meredith.edu/gallery>).

Gregg Museum of Art & Design, The Historic Chancellor's Residence, NC State University, located at 1903 Hillsborough Street, Raleigh. Apr. 14 - Dec. 3 - "Reic Serritella: Trompe l'Oeil Ceramics". Chapel Hill artist Eric Serritella creates his ceramic sculptures as conduits to emotion through inquiry, recognition, and familiarity. Through aging and decay, Serritella's sculptures challenge the viewer with both the nature of the material and the messages within. Each organic creation is filled with metaphor, both literal and implied. Anthropomorphic elements and vessel forms link humanity as timelessly inseparable from its interactions and relationships to its natural surroundings. Each sculpture in Eric Serritella-Trompe l'Oeil Ceramics fosters awareness to affect viewers' behaviors toward the environment. Through this consciousness they can acquire new appreciations and ways of seeing. **Through Aug. 20** - "Frank Lee Craig: Near Distance". Of the many forms of visual art that have emerged in the last two centuries, collage and its three-dimensional sibling, assemblage, probably come closest to representing the process of human memory. Most of us summon up the past only in scattered bits and pieces that require instantaneous reassembly in order to literally "make sense" of recollected experiences each time we need to remember something. Every memory is a new collage of ephemeral thoughts, feelings, and impressions. "Frank Lee Craig-Near Distance" features multimedia work, collages, paintings, and sculptures by the late architect and NC State College of Design Graduate, Frank Lee Craig (B. Arch '77). The bulk of the very substantial body of work we celebrate in this exhibition parallels his efforts to make sense of the mortal circumstance he suddenly confronted when diagnosed with a fatal illness, as well as his need to keep seeing the world through the lens of

continued on Page 58