

# NC Institutional Galleries

continued from Page 49

quilt-making and Islamic architecture. **Explore Asheville Exhibition Hall, Through May 29** - "The Past They Brought With Them from The Floating Worlds series by Sanford Biggers". Using paper strips instead of fabric, Sanford Biggers here creates a collage reminiscent of the Log Cabin quilt pattern. Rumors tell of this pattern's use in quilts along the Underground Railroad to show enslaved African Americans where safe houses were located. This idea of encoded quilts related to the Underground Railroad inspired Biggers's The Floating World series, which explores the artform he became interested in after seeing the exhibition "The Quilts of Gee's Bend" at the Whitney Museum of American Art in 2002. Strip-pieced patterns, like the Log Cabin, continue to be popular with African American quilters and are still commonly seen in quilts made by the famous African American quilters from Gee's Bend.

**Ongoing** - The Asheville Art Museum, the hub for 20th- and 21st-century American art in Western North Carolina, has re-opened to the public. The \$24+ million, state-of-the-art facility encompasses 54,000 square feet and adds 70 percent more Collection gallery space. For the first time in the Museum's history, it has the capacity to host major traveling exhibitions from nationally recognized museums. The expansion increases its physical space and dramatically increases its role as a community center, educational resource, economic engine for WNC, and cultural concierge for the region's residents and visitors. Admission: Yes. Hours: Tue.-Sat., 10am-5pm; Fri. till 8pm & Sun., 1-5pm. Contact: 828/253-3227 or at ([www.ashevilleart.org](http://www.ashevilleart.org)).

**Asheville Gallery of Art, Ltd.**, 82 Patton Avenue, across from Pritchard Park opposite the old location, Asheville. **Ongoing** - Featuring original works of art by 31 local artists in oils, acrylics, watercolor, pastel, encaustic, and prints. Hours: Mon., 11am-6pm & Fri.-Sat., noon-5pm or by appt. Contact: 828/251-5796 or at ([www.ashevillegallery-of-art.com](http://www.ashevillegallery-of-art.com)).

**Black Mountain College Museum + Arts Center**, 120 College Street, Asheville. **Ongoing** - An exhibition space dedicated to exploring the history and legacy of the world's most acclaimed experimental educational community, Black Mountain College. Hours: Wed.-Sat., noon-4pm or by appt. Contact: 828/350-8484 or at ([www.blackmountaincollege.org](http://www.blackmountaincollege.org)).

**NC Homespun Museum**, next to Grovewood Gallery, at Grove Park Inn, 111 Grovewood Road, Asheville. **Ongoing** - This museum presents a historical overview of Biltmore Industries, an Arts and Crafts enterprise once renowned for its hand-loomed fabrics. The museum showcases memorabilia including photographs, letters, artifacts, woven samples and tailored suits from the active years of the industry. Located on the historic Grovewood grounds, adjacent to The Omni Grove Park Inn. Admission is free (donations appreciated). Hours: Mon.-Sat., 10am-5pm, & Sun., 11am-5pm. Contact: 828/253-7651.

**NC Glass Center**, 140 Roberts Street, Suite C, Asheville. **Ongoing** - The North Carolina Glass Center is a non-profit, public access glass studio providing daily educational offerings & demonstrations. We are proud to represent the work of our artists and instructors in the NCGC glass gallery. Hours: Mon., Wed., Thur. & Sun., 10am-5pm and Fri. & Sat., 10am-6pm. Contact: 828/505-3552 or at ([www.ncglasscenter.org](http://www.ncglasscenter.org)).

**Odyssey Co-Op Gallery**, 238 Clingman Avenue, Asheville. **Ongoing** - Our Gallery features works by 25 local clay artists, working in a variety of styles to create functional and non-functional pottery and works of figurative and abstract sculpture. Winter Hours: Fri.-Mon., 11am-5pm & closed Tue.-Thur. Contact: 828/505-8707 or at (<https://www.odysseycoop-gallery.com/about/>).

**Southern Highland Craft Guild, Biltmore Village**, 26 Lodge Street, former Biltmore Oteen Bank Building in Biltmore Village, Asheville. **Ongoing** - Featuring a wide range of work by members of the Southern Highland Craft Guild, including: pottery, glass, wood, jewelry, fiber, metal, paper, mixed media and natural materials. Hours: Mon.-Sat., 10am-7pm and Sun., noon-5pm. Contact: 828-277-6222 or at ([www.craftguild.org](http://www.craftguild.org)).

**Southern Highland Craft Guild at the Folk Art Center**, Blue Ridge Parkway Milepost 382, Asheville. **Folk Art Center Auditorium, Apr. 1, from 10am-4pm** - "Glass & Metal Day," a free educational event for the Asheville community. Each year as Spring rolls around, members of the Southern Highland Craft Guild launch their Educational Events programming at the Folk Art Center with Glass & Metal Day on the first Saturday of April. As the nation's second oldest



Work by Betty Hilton Nash, photo by Diana Gates

craft organization, the Guild brings awareness to the process of handmade craft through their free & educational events for the community. This is the first of five special events hosted throughout the year in the Folk Art Center's auditorium. For a full list of events, visit ([craftguild.org/events](http://craftguild.org/events)). From 10am to 4pm, these master craftsmen will be blacksmithing, glass blowing, piercing and annealing metals, knife making, bezeling, repoussé, soldering stained glass, forging and many other processes. **Main Gallery, Through May 3** - "Follow the Thread by Tapestry Weavers South". Tapestry Weavers South is an organization dedicated to advancing the art and craft of tapestry weaving. In 1996 eighteen people interested in tapestry attended a retreat in Dahlonega, Georgia, that became the initial meeting for a regional organization of tapestry weavers. From that meeting Tapestry Weavers South (TWS) was formed. TWS supports the goals of the American Tapestry Alliance (ATA), a national organization. Their membership includes tapestry weavers of all skill levels, primarily in the southeastern states. However, membership in TWS is open to all individuals with an interest in tapestry. **Permanent Collection Gallery, Ongoing** - "Craft Traditions: The Southern Highland Craft Guild Collection". The Guild's Permanent Collection is comprised of approximately 2400 craft objects and dates from the late 19th century to present. Beginning with a donation from Frances Goodrich in 1931, the Permanent Collection serves the Guild's mission of craft conservation and education. This new installation will feature over 200 works that highlight our holdings in traditional art: wood-carving, pottery, dolls, basketry, weavings and furniture. The subject of this ongoing exhibition is craft history – that of the Southern Highland Craft Guild and the Studio Craft Movement. Wells Fargo of Asheville has donated Hardy Davidson's Carvings to the SHCG's Permanent Collection. Hailing from Swannanoa, NC, woodcarver Hardy Davidson became a Guild Member in 1944 and was awarded Life membership in 1973. The Bank of Asheville commissioned these carvings sometime between 1930 and 1940, according to Hardy Davidson's great nephew, Glen Campbell. Almost eight decades later, the carvings have found a new home at the Folk Art Center on the Blue Ridge Parkway. "We are pleased to donate the wooden carvings by Hardy Davidson to the Southern Highland Craft Guild," said Neal Diqatro, District Manager for Wells Fargo in Asheville. **Focus Gallery, Through May 22** - "Attributes," featuring works by: Michelle Tway (fiber), Timothy Bridges (fiber), Martine House (mixed media), Noel Yovovich (metal), and Deb Herman (fiber). **Through Dec.** - The Southern Highland Craft Guild hosts daily craft demonstrations at the Folk Art Center. Every day from 10am-4pm, two artists of differing medias will explain and demonstrate their craft with informative materials displayed at their booth. These free educational events are open to the public. Visitors will have the opportunity to purchase a piece from the demonstrators, and walk away with fine craft that came to life by the hands of its maker. Viewers are invited to discuss craft, ask questions, and learn the importance of preserving these practices whilst visiting the Folk Art Center. Hours: daily from 9am-6pm. Contact: call 828/298-7928 or at ([www.southern-highlandguild.org](http://www.southern-highlandguild.org)).

**Southern Highland Craft Guild on Tunnel Road**, 930 Tunnel Road, Asheville. **Ongoing** - Work by members of the Southern Highland Craft Guild in various media. Hours: Mon.-Sat., 9:30am-5pm. Contact: 828/298-7903.

**YMI Gallery**, YMI Cultural Center, 39 S. Market Street @ Eagle Street, Asheville. **Ongoing** - "In the Spirit of Africa". Featuring traditional and contemporary African masks, figurative woodcarvings, beadwork, jewelry, and textiles. Discover the purpose of mask and sculptures, which reflect African ancestral heritage and learn to appreciate symbolism and abstraction in African art. **YMI Conference Room, Ongoing** - "Forebears & Trailblazers: Asheville's African American Leaders, 1800s – 1900s". The permanent exhibit offers

a pictorial history of African-Americans from throughout Western North Carolina. Photographs of both influential and everyday people create a panorama of the variety of life among blacks in the mountain region. Here are the young and old, the prominent and the unknown, the men and women who helped create our city's life. **YMI Drugstore Gallery, Ongoing** - "Mirrors of Hope and Dignity". A moving and powerful collection of drawings by the renowned African-American artist Charles W. White. **Entry, Ongoing** - "George Vanderbilt's Young Men's Institute, 1892-Present". Admission: Yes. Hours: Tue.-Fri., 10am-5pm. Contact: 828/252-4614.



Work by Andrea Rich

**ALTERNATE ART SPACES** - Asheville **The North Carolina Arboretum**, Milepost 393, Blue Ridge Parkway, 100 Frederick Law Olmsted Way, Asheville. **Baker Exhibit Center Gallery, Through May 14** - "An Abundance of Riches: Woodcuts of Andrea Rich". Rich's intricately designed, carved, and printed woodcuts draw viewers in for an up-close look. Some of the artist's earliest memories are of drawing animals. Childhood encounters with pets, livestock, and wildlife, including birds, deer, and toads, created a lasting connection to the natural world. Through encounters with creatures both tame and wild, Rich developed a fascination and a compassion for animals integral to her art. **Ongoing** - The Asheville Quilt Guild features a permanent, rotating quilt exhibit at Arboretum's Education Center. Visitors can also enjoy the Arboretum's Quilt Garden year-round, with plantings and patterns that change with the seasons. Admission: Yes. Hours: Education Center hours: Mon.-Sat., 9am-5pm. Contact: 828/665.2492 or at ([www.ncarboretum.org](http://www.ncarboretum.org)).

## Beaufort

**Mattie King Davis Art Gallery**, historic Rustell House of the Beaufort Historical Association, 100 Block Turner Street, Beaufort. **Ongoing** - The Mattie King Davis Art Gallery, Carteret County's Oldest Gallery, is housed in one of the Historic Site's oldest buildings and features over 100 local and regional artists. An extensive collection of fine art, pottery, crafts, and gifts can be found at this special gallery. Hours: Mon.-Sat., 10am-4pm. Contact: 252/728-5225 or at (<https://beauforthistoricsite.org/gallery/>).

## Blowing Rock

**Blowing Rock Art and History Museum**, corner of Chestnut and Main streets, downtown Blowing Rock. **Through May 14** - "Recent Acquisitions to BRAHM's Permanent Collection." The exhibition highlights 16 artworks including gifts and promised gifts to the Permanent Collection. "Recent Acquisitions" presents new additions to BRAHM's vault in light of some of the different ways objects might come into a museum's collection as well as the responsibility of care that an institution undertakes when accepting such objects. BRAHM's expansion of the Permanent Collection has largely been accomplished through the generosity of art collectors who have donated or promised artworks that align with the scope of the Museum's mission. **Cannon Gallery, Through May 7** - "Geometry with Feeling: Ida Kohlmeyer in Two & Three Dimensions". The exhibit features the work of Ida Kohlmeyer (1912-1997), most recognized for her role in the vanguard of abstract painting in the American South. BRAHM is pleased to be exhibiting examples of her two and three-dimensional work in our Atwell Gallery in the Fall of 2022. Taking up the brush during middle age, Kohlmeyer quickly developed a distinctive vocabulary of organic and geometric forms that she deployed with irrepressibly bright colors. While abstract expressionist painting is now fully integrated into the canon of American art, it was a controversial turn for an emerging New Orleans artist in the 1950s and 1960s. **Fort Gallery, Through May 28** - "POP-UP: Andy Warhol & The Portrait Impulse". The exhibition highlights 96 Polaroids, 27 black and white prints, and 6 silkscreens generously loaned from the Permanent Collection of the Turchin Center for the Visual Arts at Appalachian State University, courtesy of a gift by the Andy Warhol Foundation for the Visual Arts. Photography and its potential for experimental portraiture is foundational across Andy Warhol's prolific career. In "POP-UP", Warhol's commitment to instant film as a candid documentary medium is explored alongside examples of his iconic silkscreen prints. Synthesizing the photographic, the painterly, and the commercial, the artist's manipulation

of the human visage constitutes some of his most lasting impacts on contemporary photography and image-making. In this exhibition, we see Warhol's near-obsessive use of the camera - the Polaroid in particular - some examples of which would ultimately be transformed into the high contrast, color blocked images audiences are so familiar with today. **Ongoing** - the BRAHM will host exhibits, educational programs and classes that promote the visual arts, history and heritage of the mountains of western North Carolina. Admission: Yes. Hours: Tue.-Sat., 10am-5pm & Sun., noon-4pm. Contact: 828/295-9099 or at ([www.blowingrockmuseum.org](http://www.blowingrockmuseum.org)).

**Southern Highland Craft Guild at Moses Cone Manor**, Milepost 294, Blue Ridge Parkway, Blowing Rock. **Ongoing** - Featuring the work of members of the Southern Highland Craft Guild members in various media. Demonstrations offered each month. Hours: daily 9am - 5pm. Contact: 828/295-7938 or e-mail at ([parkway-craft@bellsouth.net](mailto:parkway-craft@bellsouth.net)).

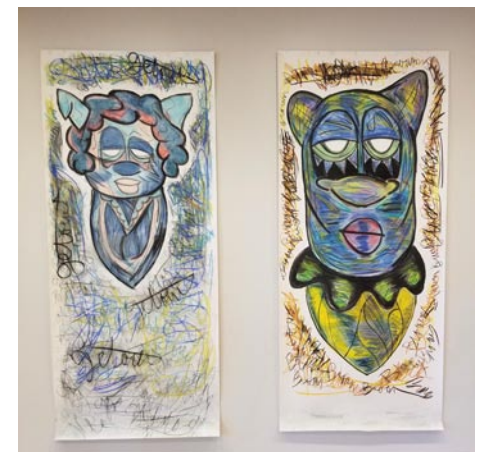
## Boone

**Downtown Boone, 1st Friday every month, from 5-8pm** - First Friday Art Crawl. For further info contact the Watauga Arts Council at 828-264-1789 ([https://www.watauga-arts.org/kingstreetart.html#](https://www.watauga-arts.org/kingstreetart.html#/)).

**Appalachian Cultural Museum**, University Hall Drive, off Hwy. 321 (Blowing Rock Road), Boone. **Ongoing** - The permanent exhibit area includes, TIME AND CHANGE, featuring thousands of objects ranging from fossils to Winston Cup race cars to the Yellow Brick Road, a section of the now closed theme park, "The Land of Oz". Admission: Yes. Hours: Tue.-Sat., 10am-5pm & Sun., 1-5pm. Contact: 828/262-3117.

**Hands Gallery**, 543 West King Street, Boone. **Ongoing** - What began as the dream of a small group of craftspeople in 1975 continues today in a very personal and continually-changing environment. The history of Hands Gallery Co-op is as varied and intriguing as the artists who have come and gone over the years. Dozens of artisans have explored the business opportunities Hands has given their work, while donating time and ideas to the growth and success of the gallery. Today, the co-op serves as a role model for arts and crafts co-ops throughout the Southeastern US. Hours: daily, 10am-6pm, except Thanksgiving & Christmas. Contact: 828-262-1970 of at (<http://www.handsgallery.org/>).

**King Street Art Collective**, Watauga Arts Council, 585 West King Street, (above Doe Ridge Pottery) Boone. **Ongoing** - A gallery and interactive art space with changing exhibits and activities celebrating the arts. Hours: Thur., 11am-5pm; Fri.-Sat., 10am-6pm; and Sun., 10am-2pm. Contact: 828-264-1789 or at ([https://www.watauga-arts.org/kingstreetart.html#](https://www.watauga-arts.org/kingstreetart.html#/)).



Works by de' Angelo DIA

**Turchin Center for the Visual Arts**, Appalachian State University, 423 West King Street, Boone. **Hodges Gallery, Through June 3** - "FLUX: Signe Stuart". A reception will be held on Mar. 3, from 5-9pm. Stuart says, "Flux alludes to natural and manmade networks from rivers, neural pathways and quantum fields to systems of transportation and communications, everything interconnected and in flux. My visual vocabulary emphasizes line: single lines emerging from material; low relief line patterns forming flux fields and networks of relationships. Recent cut paper works, drawing/sculpture hybrids, generally consist of 2 or more overlapping panels hung away from the wall to create shadows. The cut paper works have evolved into achromatic works, unintentionally referencing the unified field theory of everything. Light is an auxiliary medium, creating subtle and changing thresholds between the visible and invisible." **Community Gallery, Through June 3** - Say:Word, a site-specific installation by Renee Cloud & de'Angelo DIA. "Say:Word" is visual dialogue between artists de'Angelo DIA and Renee Cloud. This multimedia collaboration is a hybrid of exhibits, "Not Another Word" and "Dichotomy," used to examine

continued on Page 51