

NC Commercial Galleries

continued from Page 60

up at (sandhillartists.com). Hours: Thur.-Tue., 10am-5pm. Contact: (sandhillartists.com).

Bellagio, 5 Biltmore Plaza, Historic Biltmore Village, Asheville. **Ongoing** - Featuring exquisitely handcrafted jewelry and clothing. Hours: Mon.-Sat., 10am-6pm & Sun., noon-5pm. Contact: 828/277-8100 or at (www.bellagioarttowear.com).

Bella Vista Art Gallery, 14 Lodge St., Historic Biltmore Village, Asheville. **Ongoing** - Featuring works by regional and national artists in a variety of mediums. Offering contemporary oil paintings, blown glass, pottery, black & white photography, stoneware sculptures, and jewelry. Hours: Mon.-Sat., 10am-6pm & Sun., 10am-4pm. Contact: 828/768-0246 or at (www.BellaVistaArt.com).

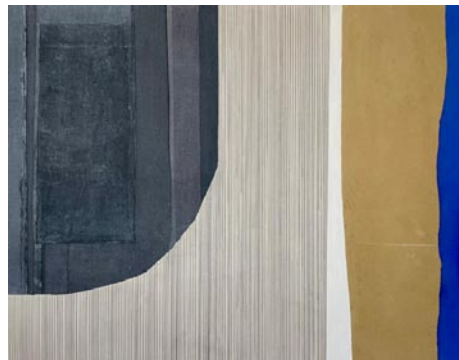


Work by Angela Johal

Bender Gallery, 29 Biltmore Avenue, Asheville. **Apr. 1 - 22** - "An Abstract Classicist: California Hard-Edge Angela Johal". A reception will be held on Apr. 1, from 5-8pm. Bender Gallery is excited to present a solo exhibition, featuring the vividly colorful and stunning hard-edge geometric works of San Francisco Bay artist Angela Johal. Johal's work vibrates off the canvas with positive energy; influenced, no doubt, by her childhood growing up in the Bay area during the 1960s and 70s surrounded by the geometric op art, psychedelic art and music from that era. She describes her work as Neo Psychedelia and "chromesthetic" as her intuitive approach to color theory is generated by the music she paints to. **Ongoing** - The region's largest and most diverse studio glass gallery on two sun-filled levels features artists from around the country as well as around the world. Hours: Mon.-Sat., 10:30am-5pm & Sun., noon-5pm. Contact: 828/505-8341 or at (www.bendergallery.com).

BlackBird Frame & Art, 365 Merrimon Avenue, just 3/4 mile north of downtown, Asheville. **Ongoing** - Currently, about 25 painters, photographers and crafters show their work at BlackBird. We also offer expert custom framing. Hours: Mon.-Fri., 10am-6pm & Sat., 10am-3pm. Contact: 828/252-6036 or at (www.BlackBirdFrame.com).

Blue Ridge Frame & Gallery, 545 Merrimon Ave., Asheville. **Ongoing** - Featuring works by local artist Linda Cheek, Ann Vasilik, Carol Bomer, Kelly Wilkinson, and many more. Plus a large selection of prints, posters, and quality custom framing. Hours: Mon.-Fri., 9:30am-6pm & Sat., 10am-4pm. Contact: 828/253-3559.



Work by Katie Walker

Blue Spiral 1, 38 Biltmore Ave., Asheville. **Main Gallery, Through Apr. 26** - "Farm to Table". Featuring a selection of works inspired by the traditional subjects of agriculture and farming, alongside functional and sculptural works that have long materialized from these environments. The show includes: Bucolic landscapes, hyper-realistic paintings of farm-life, deconstructed silver platters, photography, functional pottery, and sculptural glass. Participating artists include: Kate Adams, Luke Allsbrook, Tamie Beldue, Josh Copus, Will Dickert, John Dickson, Tom Jaszczak, Jaydan Moore, Ward Nichols, Peggy Root, Will Henry Stevens, and Hayden Wilson. **Lower Level Gallery, Through Apr. 26** - "Past and Present Tense: An Abstract Showcase". This exhibition takes us on a visual journey of abstract paintings, drawings, and sculptures from the 1900s to the present. The works of Black Mountain College artist, Frank Hursh, and modernist painter, Will Henry Stevens (1881-1949) demonstrate an artistic vernacular steeped in a

spectrum of color, consolidated gestural marks, and poetic compositions—characterizations also featured within Michael Poness' ceramic vessels. Glass artist Junichiro Baba presents austere and monumental sculptures that capture the separation of nature from society, echoing the overall theme that each artist signals; the allure and importance of abstraction. Participating artists include: Junichiro Baba, Frank Hursh, Michael Poness, and Will Henry Stevens. **Small Format Gallery, Through Apr. 26** - "Casey Engel: House as a Mirror of Self". The exhibit is in reference to the 2006 book by Clare Cooper Marcus: a fiercely thoughtful look into the psychology of house and home and how these environments profoundly intertwine with our identity. Through the playful use of domestic materials such as; curtains, bedsheets, tablecloths, napkins, and denim, Engel intuitively constructs hand-sewn, hand-quilted, and machine-pieced works that characterize interior spaces and the objects that occupy them. Experimental depictions of ladders, chairs, and doorways acknowledge a familiarity, thus inviting the viewer to consider how these objects could be identified as an extension of self. **Showcase Gallery, Through Apr. 26** - "Katie Walker: DRAWING THE LINE". Walker presents her latest collection of expressionistic abstract paintings and drawings. With the intention of merging the residue of past and imagined scenarios within her daily life, Walker's paintings reflect this fearless exploration of broader life experiences and memories through unique mark-making, experimental canvas construction, and distinct color palettes. **Ongoing** - Featuring works in a variety of mediums by regional, national and international artists. Hours: Sun.-Tue., 11am-5pm & Wed.-Sat., 11am-6pm. Contact: 828/251-0202 or at (www.bluespiral1.com).

Castell Photography, 2C Wilson Alley off Eagle St., Asheville. **Ongoing** - The gallery is owned by internationally recognized artist Brie Castell, is a unique photographic Salon & Gallery dedicated solely to photo based media. The gallery features the work of Brie Castell, and also hosts several rotating exhibitions each year of other talented photographers. Hours: Wed.-Fri., noon-6pm, Sat., noon-7pm or by appt. Contact: 828.255.1188 or at (www.castell-photography.com).

Chatsworth Art and Antiques, 54 N. Lexington Ave., Asheville. **Ongoing** - Specializing in 19th and early 20th century oils, watercolors and prints. Also jewelry, silver, china, small furniture and fine accessories. Hours: Tue.-Sat., 11am-5pm. Contact: 828.252.6004.

Cindy Walton Fine Art @ Pink Dog Creative, 348 Depot Street, in the River Arts District, Asheville. **Ongoing** - Featuring works by Cindy Walton. Hours: Fri. & Sat., 11am-5pm or by chance. Contact: visit (www.cindywalton.com).

Citron Gallery, 60 Biltmore Avenue, Asheville. **Ongoing** - Featuring works from a variety of artists collected locally, nationally and internationally. Citron Gallery is a studio and gallery experience. View authentic works of art with the opportunity to meet the artists. Citron Gallery is a collaboration between Rand and Melinda Kramer and Frances Domingues. Each is a successful artist and all have been part of the vibrant art community for many years in Asheville. We look forward to your visit. Hours: Tue.- Sat., 11am-5pm and Mon. by appt. Contact: 828/785-4131 or at (https://www.citrongallery.com/).

Clayspace Co-op, River Arts District, 119A Roberts St., Asheville. **Ongoing** - The Clay-space Co-op is a cooperative ceramics studio and showroom located in the historic river arts district of Asheville, North Carolina. The main aim of the Clayspace Cooperative is to provide an environment that promotes the artistic growth and success of its members through cooperation and education. Hours: hours by chance. Contact: 828/279-3811.

Cold River Gallery, 32-A Biltmore Ave., Asheville. **Ongoing** - Welcome to the artistic expression of messages found in ancient wisdom, philosophies and our Earth's gifts, presented as the fine art of Karen Pierre. Working studio, jewelry, pottery. Hours: Tue.-Sat., noon-5pm. Contact: 828/350-0955.

Corey C. McNabb Studio, River Arts District, 1 Roberts Street, Suite 201, above White Duck Taco Shop, Asheville. **Ongoing** - An Asheville native, McNabb paints only with a palette knife, applying oils or acrylics to canvas, creating bold bright images with an impressionistic impasto style. Hours: Thur.-Tue., 11am-5pm. Contact: at (www.mcnabbfineart.com).

CURVE studios & garden, 6, 9 & 12 Riverside Dr., River Arts District, Asheville. **Ongoing** - Working studios of Constance Williams, Sutherland Handweaving, Pattiy Torno, Maria Troya, Kyle Carpenter, Akira Satake, Cynthia Wynn, Fran Welch, Jenny Mastin, Cassie Ryalls & more. Hours: 11am-4pm daily. Contact: 828/388-3526 or at (www.CURVEstudiosNC.com).

Desert Moon Designs Studios & Gallery, 372 Depot Street, Suite 44, River Arts District, Asheville. **Ongoing** - The gallery is a progressive contemporary gallery that includes working studios. The focus of the gallery is to showcase both emerging/established local and visiting regional artists. Several times a year special exhibitions are scheduled to introduce new talent or to bring focus to a certain art medium. Hours: Mon.-Sat., 11am-5pm. Contact: 828/575-2227 or at (http://www.desertmoondesigns-studios.com).

FW Gallery at Woolworth Walk, 25 Haywood St., Asheville. **Ongoing** - Woolworth Walk is a uniquely Asheville experience; a privately and locally owned gallery in the heart of downtown, located in a historic building and representing local artists exclusively, it is without a doubt "Worth the Walk". Hours: Mon.-Thur., 11am-6pm; Fri., 11am-7pm; Sat., 10am-7pm; & Sun., 11am-5pm. Contact: 828/254-9234 or at (www.woolworthwalk.com).

Gallery Minerva Fine Art, 8 Biltmore Ave., Asheville. **Ongoing** - Featuring painting, sculpture, photography, ceramics and glass by local and regional artists. Hours: Mon.-Thur., 11am-6pm; Fri. & Sat., 11am-8pm; & Sun., noon-5pm. Contact: 828/255-8850 or at (www.galleryminerva.com).

Gallery of the Mountains, Inside The Omni Grove Park Inn, 290 Macon Ave., Asheville. **Ongoing** - Showcasing American handmade crafts by more than 100 artists and craftspeople from the Southern Appalachian region. Wed.-Sun., 10am-5pm. Contact: 828/254-2068.

Groveswood Gallery, adjacent to The Omni Grove Park Inn, 111 Groveswood Road, Asheville. **Ongoing** - Established in 1992, Groveswood Gallery is nationally recognized for its dedication to fine American-made art and craft. Located in historic Groveswood Village, this site once housed the weaving and woodworking operations of Biltmore Industries, an Arts and Crafts enterprise that played a significant role in the Appalachian Craft Revival during the early 20th century. Today, Groveswood Gallery offers two expansive floors of finely crafted furniture, ceramics, jewelry and more, contributed by over 400 artists and craftspeople from across the United States. Hours: Mon. - Sat., 10am-5:30pm & Sun. 11am to 5pm. Contact: 828/253-7651 or at (www.groveswood.com).

Ignite Jewelry Studios, second story of Riverview Station, 191 Lyman St., #262, Asheville. **Ongoing** - Ignite Jewelry Studios, a project co-founded by local jewelers Jessica Hall, owner of Bluebird Designs, and Nora McMullen, owner of Nora Julia. Ignite Jewelry Studios has a fully-stocked shared space for experienced jewelers to use the equipment, create together and grow their skills. Weekly jewelry workshops are taught covering a variety of jewelry techniques for all skill levels. Gallery Hours: Tue.-Sat., 11-4pm. Contact: 828/552-4805 or at (www.ignitejewelrystudios.com).

Jewels That Dance: Jewelry Design, 63 Haywood St., next door to the Library, Asheville. **Ongoing** - Featuring hand-crafted jewelry by some of America's foremost jewelry artists. Hours: Mon.-Sat., 10:30am-6pm. Contact: 828/254-5088 or at (www.jewelsthatdance.com).

Jonas Gerard Fine Art, 240 Clingman Ave., Asheville. **Ongoing** - Featuring works by nationally known artist Jonas Gerard (1941-2020). The 5,000 square foot studio / gallery is filled with years of passion and dedication. He used bold, passionate, sweeping gestures of saturated color that form unexpected images of poetic stature. Hours: Mon.-Sun., 10am-6pm & by appt. Contact: 828/350-7711 or at (www.jonasgerard.com).

K2 Studio, 59 College Street, inside The Kress Building, Asheville. **Ongoing** - Featuring a unique collection of fine furniture by local artists and pieces from around the world, home accessories and changing fine art exhibitions. Hours: Mon.-Thur., 11am-6pm; Fri. & Sat., 11am-7pm; and Sun., noon-5pm. Contact: 828/250-0500 or at (www.k2furniture.com).

Kress Emporium, 19 Patton Ave., Patton & Lexington Aves., downtown Asheville. **Ongoing** - Featuring works by over 100 artists and craftsmen. Hours: Mon.-Sat., 11am-6pm & Sun., noon-6pm. Contact: 828/281-2252 or at (www.thekressemporium.com).



Work by Galen Cheney

Mark Bettis Downtown Gallery, 15 Broadway Street, Asheville. **Apr. 7 - 27** - "Off the Grid," featuring works by Galen Cheney. A reception will be held on Apr. 7, from 5-8pm. This limited solo art showcase is called "Off the Grid" - a dynamic exhibit that connects a group of paintings in the shape of a grid that alternately weaves and warps, changes from being pulled taut, to coming apart or even barely there. **Ongoing** - Featuring works by Mark Bettis, Deb Williams, Asher Zev Holman, Nabil El Jaouhari, David Sheldon, GrantPenny, Cason Rankin, Samantha Edmiston, Balsam Abo Zour, and Tess Darling. Hours: Mon-Thur., 11am-5pm; Fri.-Sat., 11am-6pm; & Sun. by appt. Contact: Mark Bettis at 941/587-9502 or e-mail to (markdbettis@gmail.com).

Mark Bettis Studio & Gallery, 123 Roberts Street, in the Wedge Studios Building, Asheville. **May 13 - 26** - "Into The Hallow," featuring works by Tess Darling. A reception will be held on May 13, from 5:30-7:30pm. All works will be available for purchase. **Ongoing** - Featuring works by Mark Bettis, Deb Williams, Asher Zev Holman, Nabil El Jaouhari, David Sheldon, GrantPenny, Cason Rankin, Samantha Edmiston, Balsam Abo Zour, and Tess Darling. Hours: Mon.-Sat., 10am-5pm. Contact: Mark Bettis at 941/587-9502 or e-mail to (markdbettis@gmail.com).

Momentum Gallery, 24 N. Lexington Ave., Asheville. **Ongoing** - located in downtown Asheville, offers a contemporary and modern program with an emphasis on emerging and mid-career artists. Occupying approximately 4000 square feet in an easily accessible, street-level space, the gallery's mission is to provide compelling, museum-quality art to our clients. Curated exhibitions featuring exceptional paintings, original prints, and innovative sculpture refresh regularly in the main spaces and smaller adjoining galleries. Momentum Gallery also participates in major art fairs exhibiting work by represented artists. Hours: Mon.-Sat., 10am-6pm & Sun. noon-5pm. Contact: 828/505-8550 or at (momentumgallery.com).

Montford Arts Center, 235 Montford Avenue, Asheville. **Ongoing** - Featuring works in a variety of media by over twenty-five area artists. Watch artists at work. Hours: Tue.-Fri., 11:30am-6pm & Sat., 11:30am-5pm. Contact: 828/777-1014.

Mountain Made, Grove Arcade Public Market, 1 Page Ave., Suite 123, Asheville. **Ongoing** - Featuring the work of over a 150 WNC artisans, in both contemporary and traditional mountain handcrafts. This one-of-a-kind, gallery and gift shop caters to those shoppers who wish to take a "piece of the mountains" home with them. Hours: Mon.-Sat., 10am-6pm & Sun., noon-5pm. Contact: 828/350-0307 or at (www.mtnmade.com).

Mudhunter Pottery, 66 Broadway St., Asheville. **Ongoing** - Featuring a rustic gallery shop showcasing functional and sculptural work from over 20 local potters. Our artists' diverse styles ad affordable prices set them apart. Hours: Tue.-Thur., 11am-5:30pm & Fri. & Sat., 11am-6pm. Contact: 828/225-5869.

New Morning Gallery, 7 Boston Way, Historic Biltmore Village, Asheville. **Ongoing** - Featuring fine art and crafts by some of America's finest artists. Hours: Mon.-Thur., 10am-6pm; Fri. & Sat., 10am-7pm. Contact: 828/274-2831 or at (www.newmorninggallerync.com).

Overström Studio, 35 Wall St., Asheville. **Ongoing** - This architecturally significant gallery exclusively represents work by internationally-recognized designer Michael Overström, who with his wife Susan, present their original, handformed jewelry designs that embrace the designer's Scandinavian heritage and define Asheville's elegant style. Hours: Tue.-Sat., 10am-8pm. Contact: 828/258-1761 or at (www.overstrom.com).

continued on Page 62