

Lowcountry Artists Gallery

continued from Page 8

by nature.

McDonald always loved painting and drawing as long as she can remember. She received her formal art training at Columbus State University. Her eye for design was put to work as a design manager in her years working in advertising and visual merchandising. In the early 1990's, she began doing murals for schools, businesses and private residences around Columbia, SC, which is when McDonald realized her true love lay in large-format painting. She's pursued oil-on-canvas as her preferred medium ever since. She paints using only the primary colors, (red, yellow and blue), along with white, and custom mixes all of the colors in her paintings.

McDonald now lives on Daniel Island where her studio overlooks the marsh, and provides an endless source of inspiration. "I love the colors of the marsh, and the way they change with the seasons and the tides," she says. "Every time you look at the marsh, you see something different, and I'm fascinated by that."

For further information check our Com-



Work by Betsy Jones McDonald

mercial Gallery listings, call the gallery at 843/577-9295 or visit (www.lowcountryartists.com).

Art League of Hilton Head on Hilton Head Island, SC, Features Works by Alvin B. Glen

The Art League of Hilton Head on Hilton Head Island, SC, will present *Rice, Ghana, Charleston, the World: Creating LowCountry Rhythms*, featuring works by Alvin B. Glen, on view from Apr. 9 through May 10, 2024. A reception will be held on Apr. 10, from 5-7pm. A gallery walk with the artist will be offered on Apr. 11, from 11am-noon.

The collection, depictions of men, women, and children farming and processing rice, highlights the hard labor of slaves that made Charleston one of the richest cities in the world. "Their cultivation of Carolina Gold rice forever changed the Lowcountry and added significant cultural influences felt nationwide," says Glen.

Glen, a retired art teacher from Dorchester, SC, began creating historically based works full of social commentary when he taught high school art classes in the late 80s and early 90s. "The students had difficulty seeing a positive image of themselves in history and society. I began creating drawings based on the concerns raised by my students."

Glen has exhibited widely throughout South Carolina, North Carolina and Georgia. He was awarded Best in Show at Charleston's Piccolo Spoleto Outdoor Art Exhibit and was the featured artist at the Moja Arts Festival in Charleston and Hilton Head Island's Gullah Celebration.

The Art League of Hilton Head is the only 501(c)(3) nonprofit visual arts organization on Hilton Head Island with a synergistic art gallery and teaching Academy. The Art League Academy welcomes artists and students in all media at all skill levels, including true beginners. Taught by professional art educators, students can



Work by Alvin B. Glen

choose from many art classes and workshops that change monthly. The Art League Gallery features local artwork in all media created by more than 170 member artists. All artwork on display is for sale and exhibits change every month. Located mid-island inside Arts Center of Coastal Carolina, next to the box office. "Inspiring visual arts for our community and its visitors through exhibitions, education and partnerships" is Art League of Hilton Head's mission.

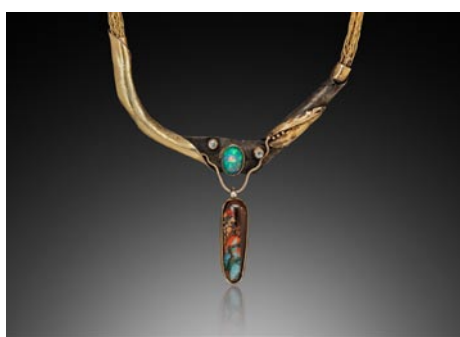
For further information check our SC Institutional Gallery listings, call the League at 843/681-5060 or visit (www.artleaguehhi.org).

Coastal Discovery Museum on Hilton Head Island, SC, Presents the Art Market - Apr. 27 - 28, 2024

The Coastal Discovery Museum on Hilton Head Island, SC, is pleased to announce the 23rd Annual Art Market, a juried fine art and craft show, which takes place on Apr. 27-28, on the grounds of Honey Horn, a unique Lowcountry setting known for its live oaks, winding trails and camellia garden.

Over 90 artists from across the region will be displaying and selling a wide range of hand-crafted works, including ceramics, fiber, glass, jewelry, metal, painting, drawing, photography and sculpture.

Show hours are 10am to 5pm, on Saturday; and 10am to 4pm, on Sunday.



Work by Valerie Thomas and Dona Shirley

Admission is \$5 and free to children

[continued on Page 11](#)



Love art. Learn art.

ART LEAGUE GALLERY ART LEAGUE ACADEMY

Fine art, sculpture, jewelry, and more by 200+ local artists on display and for sale. All new work is shown every month with exhibitions and receptions open to all.

843.681.5060 843.842.5738

Monday - Saturday, 10 a.m. - 4 p.m. & Sunday, 12 - 4 p.m.
14 Shelter Cove Lane, Hilton Head Island, SC 29928

www.ArtLeagueHHI.org

A 501(c)(3) Nonprofit Arts Organization

