



MYSTIC CHORDS

CHRIS GRAEBNER · MIRINDA KOSSOFF · JUDE LOBE

may 22 – jun 23

opening fri may 25 6-9 pm

Contemporary fine art in the heart of the Hillsborough Historic District

'Lines of Communication'

April 27 to May 22, 2012

An invitational group exhibition of paintings that explore the theme of the exhibition: 'Lines of Communication'. Eight national and regionally recognized artists present both abstract and representational paintings in this evocative exhibition.



Opening reception
Friday April 27 2012
6:00 - 9:00 pm



Exhibiting artists:

Michael Brown - Chapel Hill, NC
Molly Cliff Hiltz - Portland, OR
Mike Hoyt - Raleigh, NC
George Marks - Arnaudville, LA
Melissa Miller - Gaithersburg, MD
Alberto Ortega - Raleigh, NC
Jenifer Padilla - Durham, NC
Anthony Ulinski - Raleigh, NC

100 S. Churton St. Hillsborough NC 27278
919 - 883 - 1415 www.enogallery.net
www.facebook.com/enogallery

Fine Art Carolina Gallery in Mebane, NC, Offers Group Exhibit

The Triangle area's newest gallery, Fine Art Carolina Gallery in Mebane, NC, is presenting the exhibit, *Blooms*, a group show featuring works by Lane Watson, Ali Givens, Jude Lobe, Celine Meador, Pat Scheible, and Pam Watts, on view through May 23, 2012. A reception will be held on May 4, from 7-9pm.



Work by Ali Givens

Five artists joined together to open this fine art gallery in Mebane, with the mission to connect to the community and build an appreciation for art. They recently renovated the old building on Clay Street that once was the Wall Street Barber Shop owned and operated by Harold Ashley.

In connecting to the community there will be events like "Tribute Shows" to honor persons that have played an important role in the community, Mini Lunch-Break workshops where persons can explore their inner artist and create



Work by Pam Watts

art, 2- and 5-day workshops by nationally known artists, and a Featured Shows of Carolina artists.

The five local artists, Ali Givens, Jude Lobe, Celine Meador, Pat Scheible, and Pam Watts, are all established professional artists and exhibit work in a variety of media. Media include fabric art, oil painting, acrylic painting, enamel and copper, collage, jewelry and watercolor. The artists own and operate the business and have added a studio space so they can work on their art while they are working in the gallery.

Fine Art Carolina Gallery also provides the following art services for art buyers: On-site review of residential, corporate and public spaces; Selection and presentation of artwork; Commissioned works of art; Art available on loan for approval; Delivery and professional installation; and Crating and shipping worldwide.

For further information check our NC Commercial Gallery listings, call the gallery at 919/455-5965 or visit (<http://FineArtCarolina.com>).

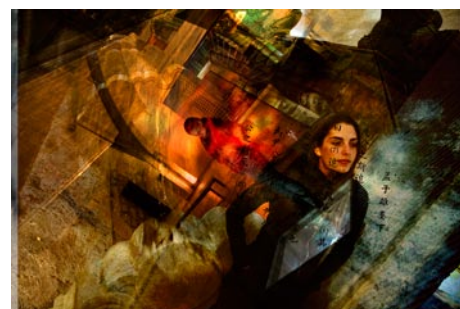
FedEx Global Education Center in Chapel Hill, NC, Features Photographs by Barbara Tyroler

The FedEx Global Education Center at the University of North Carolina at Chapel Hill, Chapel Hill, NC, is presenting the exhibit, *Beijing Impressions: Portraits of a Shifting Landscape*, featuring photographs by Barbara Tyroler, on view through Sept. 18, 2012. A reception is planned for the Fall.

Tyroler's abstract photography is a visual response to the poetic interpretation of Chinese writer Lin Bai's personal memoirs, developed by Tyroler's daughter Samm Tyroler-Cooper.

This exhibition was inspired by "Illusion," an excerpt from Lin's collection of autobiographical essays *The Moonlight of De Erwo*. Photographed during a nine-day visit to Beijing, this work has been progressively expanded since its inception in 2004, producing seven unique exhibitions in Washington, DC, and the Triangle.

"These photos reflect the personal experiences of a very brief visit to a distant city," Tyroler said. "I was motivated by the departure of my American daughter, who left her mother country to become totally immersed in one Asian culture through language and relationships with its migrant women."



Work by Barbara Tyroler

Presented in large, blended photographs, these figurative landscapes serve to reflect a people and city in cultural

transformation, synthesizing the ancient with the contemporary, the literal with the metaphoric. The show includes 23 large works, including ten new images produced specifically for this show, along with a silk installation made in collaboration with local fiber artist, Peg Gignoux.



Work by Barbara Tyroler

"*Beijing Impressions* is a beautiful collection of portraits, made abstract by layers of texture and color combined with intriguing images of lives in Beijing," said Laura Griest, manager of global events and exhibitions. "These layers combine to create stunning and intricate works that will challenge the viewer to look closely, to 'meet' the subjects, and to consider their stories."

Tyroler earned her MEd from the University of Massachusetts in Amherst with emphasis on visual communication and community arts development. She received an MFA in imaging and digital arts from the University of Maryland, Baltimore County. Her work focuses on abstracted figurative portraiture with emphasis on family, relationships and issues of identity.

Tyroler offered some insights into her work and this exhibit: "*Beijing Impressions, Portraits of a Shifting Landscape*, formerly *Portraits of a Foreign Land*,

continued on Page 49

The deadline each month to submit articles, photos and ads is the 24th of the month prior to the next issue. This will be May 24th for the June 2012 issue and June 24 for the July 2012 issue. After that, it's too late unless your exhibit runs into the next month. But don't wait for the last minute - send your info now.

And where do you send that info?

E-mail to (info@carolinaarts.com) or mail to:
Carolina Arts, P.O. Drawer 427, Bonneau, SC 29431