

NC Commercial Galleries

continued from Page 61

Ariel Gallery, 19 Biltmore Ave., Asheville. **Ongoing** - Presenting the best in clay, fiber, paper, books, jewelry, metal, sculpture, furniture and glass by members of the Ariel Contemporary Craft Cooperative. A gallery owned and operated by artists. Hours: Tue.-Thur., 10am-6pm; Fri. & Sat., 10am-7pm and Sun., 1-5pm. Contact: 828/236-2660 or at (www.arielcraftgallery.com).

Bellagio, 5 Biltmore Plaza, Historic Biltmore Village, Asheville. **Ongoing** - Featuring exquisitely handcrafted jewelry and clothing. Hours: Mon.-Sat., 10am-6pm. Contact: 828/277-8100 or at (www.bellagioarttowear.com).

Bella Vista Art Gallery, 14 Lodge St., Historic Biltmore Village, Asheville. **Ongoing** - Featuring works by regional and national artists in a variety of mediums. Offering contemporary oil paintings, blown glass, pottery, black & white photography, stoneware sculptures, and jewelry. Hours: Mon.-Sat., 10am-6pm & Sun., 10am-4pm. Contact: 828/768-0246 or at (www.BellaVistaArt.com).

BlackBird Frame & Art, 365 Merrimon Avenue, just 3/4 mile north of downtown, Asheville. **Ongoing** - Currently, about 25 painters, photographers and crafters show their work at BlackBird. We also offer expert custom framing. Hours: Mon.-Fri., 10am-6pm & Sat., 10am-3pm. Contact: 828/252-6036 or at (www.BlackBirdFrame.com).

Blue Ridge Frame & Gallery, 545 Merrimon Ave., Asheville. **Ongoing** - Featuring works by local artist Linda Cheek, Ann Vasilik, Carol Bomer, Kelly Wilkinson, and many more. Plus a large selection of prints, posters, and quality custom framing. Hours: Mon.-Fri., 9:30am-6pm & Sat., 10am-4pm. Contact: 828/253-3559.

Blue Spiral 1, 38 Biltmore Ave., Asheville. **Gallery 1, Through June 2** - Featuring an exhibit of landscapes, still life compositions, and interiors with figurative elements by Daniel Robbins.

Gallery 2, Through June 2 - "Group Show," featuring paintings by Andrew Moore, ceramics by Donald Penny, paintings by Suzanne Stryk, and works in fiber by Akiko Sugiyama. The exhibit presents abstract and representational works by four regional artists which allude to science and nature. **Small Format Gallery, Through June 2** - Featuring ceramics by Ani Kasten. Textural and sophisticated - Kasten's sculptural groupings and vessels reference ancient artifacts while retaining a modern, minimalist aesthetic. **Display Case, Through June 2** - Featuring baskets by Debora Muhl. Deconstructed basket forms - Muhl's contemporary sculpture made from coiled, fragrant sweetgrass suggests movement and rhythm.

Showcase Gallery, Through June 2 - Featuring iconic motifs and indigenous critters by three contemporary regional artists convey a narrative of the rural South, including wire sculptures by Janet Brome; paintings by Bethanne Hill; and wood-fired pottery by Matt Jones. **Ongoing** - Featuring works in a variety of mediums by regional, national and international artists. Hours: Mon.-Sat., 10am-6pm. Contact: 828/251-0202 or at (www.bluespiral1.com).

Castell Photography, 2C Wilson Alley off Eagle St., Asheville. **Ongoing** - The gallery is owned by internationally recognized artist Brie Castell, is a unique photographic Salon & Gallery dedicated solely to photo based media. The gallery features the work of Brie Castell, and also hosts several rotating exhibitions each year of other talented photographers. Hours: Wed.-Fri., noon-6pm, Sat., noon-7pm or by appt. Contact: 828.255.1188 or at (www.castell-photography.com).

Chatsworth Art and Antiques, 54 N. Lexington Ave., Asheville. **Ongoing** - Specializing in 19th and early 20th century oils, watercolors and prints. Also jewelry, silver, china, small furniture and fine accessories. Hours: Tue.-Sat., 11am-5pm. Contact: 828.252.6004.

Clayspace Co-op, River Arts District, 119A Roberts St., Asheville. **Ongoing** - The Clayspace Co-op is a cooperative ceramics studio and showroom located in the historic river arts district of Asheville, North Carolina. The main aim of the Clayspace Cooperative is to provide an environment that promotes the artistic growth and success of its members through cooperation and education. Hours: hours by chance. Contact: 828/279-3811 or at (www.clayspace.org).

Cold River Gallery, 32-A Biltmore Ave., Asheville. **Ongoing** - Welcome to the artistic expression of messages found in ancient wisdom, philosophies and our Earth's gifts, presented as the fine art of Karen Pierre. Working studio, jewelry, pottery. Hours: Tue.-Sat.,

noon-5pm. Contact: 828/350-0955.

CURVE studios & garden, 6, 9 & 12 Riverside Dr., River Arts District, Asheville. **Ongoing** - Working studios of Constance Williams, Sutherland Handweaving, Patti Torno, Maria Troya, Kyle Carpenter, Akira Satake, Cynthia Wynn, Fran Welch, Jenny Mastin, Cassie Ryalls & more. Hours: 11am-4pm daily. Contact: 828/388-3526 or at (www.CURVEstudiosNC.com).



Work by Kathleen Lewis

FW Gallery at Woolworth Walk, 25 Haywood St., Asheville. **May 4 - 30** - "Asheville, 50 years," featuring an exhibit of works by local clothing designer and fiber artist Kathleen Lewis, who has spent 50 years creating fashionable garments and fun accessories in Asheville. A reception will be held on May 4, from 5-7pm. Hours: Mon.-Sat., 11am-6pm, closed Tue., & Sun. 11am-5pm. Contact: 828/254-9234 or at (www.woolworthwalk.com).

Gallery Minerva Fine Art, 8 Biltmore Ave., Asheville. **Ongoing** - Featuring painting, sculpture, photography, ceramics and glass by local and regional artists. Hours: Mon.-Thur., 11am-6pm; Fri. & Sat., 11am-8pm; & Sun., noon-5pm. Contact: 828/255-8850 or at (www.galleryminerva.com).

Gallery of the Mountains, Inside the Grove Park Inn, 290 Macon Ave., Asheville. **Ongoing** - Now part of the Grovewood Gallery family, featuring handcrafted wearables, jewelry, pottery and many one-of-a-kind objects. Hours: Mon.-Tue., 9am-6pm; Wed.-Sat., 9am-9pm & Sun., 9am-5pm. Contact: 828/254-2068.

Grovewood Gallery, at the Hometown Shops, Grove Park Inn, 111 Grovewood Road, Asheville. **Ongoing** - Featuring contemporary craft works by Richard Eckerd, Randy Shull, Dan Miller, Michael Costello, Thomas Reardon & Kathleen Doyle, Chris Abell, Mark Taylor, Kirk Schully, Reed Todd, III, Kurt Nielson and others. **Also** - 2nd floor furniture gallery, featuring works by Kevin Kopil, Lorna Secrest, Michael McClatchy, Anthony Buzak, Marilyn MacEwen, Lisa Jacobs, Chris Horney, and many others. Hours: Mon.-Sat., 10am-5pm. Contact: 828/253-7651 or at (www.grovewood.com).

Jewels That Dance: Jewelry Design, 63 Haywood St., next door to the Library, Asheville. **Ongoing** - Featuring hand-crafted jewelry by some of America's foremost jewelry artists. Hours: Mon.-Sat., 10:30am-6pm. Contact: 828/254-5088 or at (www.jewelsthatdance.com).

Jonas Gerard Fine Art, 240 Clingman Ave., Asheville. **Ongoing** - "Explosions of Color on Canvas". Nationally known artist Jonas Gerard displays his most recent collection of abstract acrylics. His 5,000 square foot studio / gallery is filled with years of passion and dedication. He uses bold, passionate, sweeping gestures of saturated color that form unexpected images of poetic stature. Gerard paints in house to upbeat inspiring music, come unannounced or by appointment. Hours: Mon.-Sun., 10am-6pm & by appt. Contact: 828/350-7711 or at (www.jonasgerard.com).

K2 Studio, 59 College St., Asheville. **Ongoing** - Featuring a unique collection of fine furniture by local artists and pieces from around the world, home accessories and changing fine art exhibitions. Hours: Mon.-Sat., 11am-6pm & Sun. noon-5pm. Contact: 828/250-0500 or at (www.homeredefined.com).

Kress Emporium, 19 Patton Ave., Patton & Lexington Aves., downtown Asheville. **Ongoing** - Featuring works by over 100 artists and

craftsmen. Hours: Mon.-Sat., 11am-6pm & Sun., noon-6pm. Contact: 828/281-2252 or at (www.thekressemporium.com).

Montford Arts Center, 235 Montford Avenue, Asheville. **Ongoing** - Featuring works in a variety of media by over twenty-five area artists. Watch artists at work. Hours: Tue.-Fri., 11:30am-6pm & Sat., 11:30am-5pm. Contact: 828/777-1014.

Mountain Made, Grove Arcade Public Market, 1 Page Ave., Suite 123, Asheville. **Ongoing** - Featuring the work of over a 150 WNC artisans, in both contemporary and traditional mountain handcrafts. This one-of-a-kind, gallery and gift shop caters to those shoppers who wish to take a "piece of the mountains" home with them. Hours: Mon.-Sat., 10am-6pm & Sun., noon-5pm. Contact: 828/350-0307 or at (www.mtnmade.com).

Mudhunter Pottery, 66 Broadway St., Asheville. **Ongoing** - Featuring a rustic gallery shop showcasing functional and sculptural work from over 20 local potters. Our artists' diverse styles and affordable prices set them apart. Hours: Tue.-Thur., 11am-5:30pm & Fri. & Sat., 11am-6pm. Contact: 828/225-5869.

New Morning Gallery, 7 Boston Way, Historic Biltmore Village, Asheville. **Ongoing** - Featuring fine art and crafts by some of America's finest artists. Hours: Mon.-Sat., 10am-7pm. Contact: 828/274-2831 or at (www.newmorninggallerync.com).

Overström Studio, 35 Wall St., Asheville. **Ongoing** - This architecturally significant gallery exclusively represents work by internationally-recognized designer Michael Overström, who with his wife Susan, present their original, handformed jewelry designs that embrace the designer's Scandinavian heritage and define Asheville's elegant style. Hours: Tue.-Sat., 10am-8pm. Contact: 828/258-1761 or at (www.overstrom.com).

Pura Vida, 39-B Biltmore Ave., Asheville. **Ongoing** - Featuring a space for the senses, offering the finest in artwork appealing to all five senses. Hours: daily noon-10pm. Contact: 828/271-6997 or at (www.pura-vida-asheville.com).

16 Patton Fine Art Gallery, 16 Patton Avenue, Asheville. **Ongoing** - Featuring works by William McCullough, Deborah Squier, John MacKah, Greg Osterhaus, Jerry La Point, Richard Over-smith, Scott Lowery, Dawn Rentz, Laura Young, Margaret Dyer, Suzy Schultz and Stuart Roper. Studio glass by Herman Leonhardt. Hours: Mon.-Sat., 10am-6pm & Sun., 1-6pm. Contact: 828/236-2889 or at (www.16patton.com).

Studio B Custom Framing & Fine Art, 171 Weaverville Hwy., 2.1 miles north of our old location, Asheville. **Ongoing** - Browse our new gallery featuring works by national and international artists, including paintings, prints & posters, jewelry, ceramics, wood and textiles. Also offering custom framing. Hours: Tue.-Fri., 10am-5:30pm & Sat., 10am-3pm. Contact: 828/225-5200 or at (www.galleryatstudiob.com).

Sutherland Handweaving Studio, 122 Riverside Dr., inside Cotton Mill Studios in River Arts District, Asheville. **Ongoing** - This handweaving studio, gallery and learning center features fine, one-of-a-kind and limited edition handwoven fashion accessories and household textiles, including scarves, shawls, garments, handbags, towels, table linens, blankets and wall art. Sutherland also offers a series of classes and workshops for beginning weavers, weavers needing a refresher course or experienced weavers. A monthly Sutherland Weavers' Study Group brings area weavers together to discuss design challenges, share successes and work through problems in a casual, small group format. Hours: Tue.-Sat., from 10am-4pm. Contact: Barb Butler, 828/513-1814, or Karen Donde, 854/261-4324, or at (www.sutherlandhandweaving.com).

310 ARTGallery, 191 Lyman St, #310, Asheville. **May 1 - 31** - "Visionary Flowers," featuring new painting by Elizabeth Henderson. A reception will be held on May 12, from 4-6pm. **Ongoing** - Featuring original, contemporary fine art by 21 regional artists. Hours: Fri.-Sun., 9:30am-3:30pm and most weekdays or by appt. Contact: 828-776-2716 or at (<http://www.310art.com/main/>).

The Bender Gallery, 57 Haywood St., Asheville. **Ongoing** - The region's largest and most diverse studio glass gallery on two sun-filled levels features artists from around the country as well as around the world. Hours: Mon.-Sat., 10:30am-5pm & Sun., noon-5pm. Contact: 828/505-8341 or at (www.thebender-gallery.com).

The Haen Gallery, 52 Biltmore Ave., a few steps south of the movie theatre, Asheville.

Ongoing - Committed to providing access to stunning and unique artwork for discerning collectors and our community in general. Our offerings will reflect the character and sensibilities of this wonderful region. Including works by Lynn Boggess, GC Myers, Jerry Bowman, Alvena McCormick, Volkmar Wentzel, and MM Pipkin. Hours: Mon.-Fri., 10am-6pm; Sat., 11am-6pm; and Sun., noon-5pm. Contact: 828/254-8577 or at (www.thehaengallery.com).

The Satellite Gallery, 55 Broadway, Asheville. **Ongoing** - Featuring works by the next wave of innovative and creative artists that are rising from the underground of contemporary street and pop culture. Hours: Tue.-Sat., 11am-6pm & Sun., noon-6pm. Contact: 828/505-2225 or at (<http://www.thesatellitegallery.com/>).

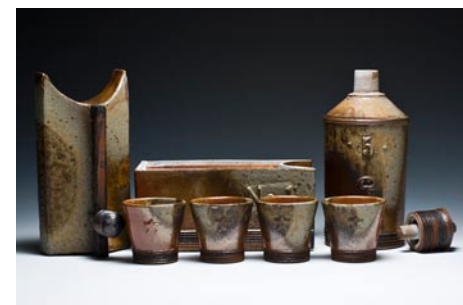
Woolworth Walk, 25 Haywood Street, Asheville. **Ongoing** - Featuring artwork and crafts by over 170 artists. Hours: Mon.-Sat., 11am-6pm, closed Tue. (until Mar.), & Sun. 11am-5pm. Contact: 828/254-9234 or at (www.woolworthwalk.com).

ALTERNATE ART SPACES - Asheville
The Captain's Bookshelf, 31 Page Ave., Asheville. **Ongoing** - Featuring original art, prints and poetry broadsides are displayed along with a quality selection of secondhand and rare books. Hours: Tue.-Sat., 10am-6pm. Contact: 828/253-6631 or at (<http://www.captainsbookshelf.com/>).

Atlantic Beach

Vision Gallery, 407 Atlantic Beach Causeway, Atlantic Beach. **Ongoing** - Featuring original paintings and three-dimensional work from regional and national artists, and one and two-person shows in summer months. Hours: 10:30am-5pm, closed Wed, Sun. Contact 252/247-5550 or at (www.twogalleries.net).

Bakersville



Works by Nathan Falter

Crimson Laurel Gallery, Blevins Building, 23 Crimson Laurel Way, Bakersville. **Through May 31** - "New Work: Ceramics by Ryan McKerley". Process is the main influence on his work. He uses a technique called water carving that mimics erosion. He paints paraffin on his dry, unfired pots and then washes the surface with a very wet sponge. **Through June 29** - "Containment III: A Nesting Instinct". A reception will be held on May 5, starting at 6pm. Now in its third year, the exhibit challenges the invited artists to think outside the box and create works inspired by the containment theme. Participating artists include: Kurt Anderson, Daniel Beck, Micah Cain, Kyle Carpenter, Chandra Debusse, Lynn Duryea, David Eichelberger, Mark Errol, Jana Evans, Nathan Falter, Mary Fischer, Rachel Garceau, Terry Gess, Julie Guyot, Erik Haagensen, Leslie Hinton, Andy Sloan Jackson, Jerry Jackson, Daniel Johnston, Brian Jones, Heather Knight, Andrew Massey, Richard Nickel, Rob Pulley, Andy Rogers, Deborah Rogers, Valerie Schnauffer, Molly Spadone, Liz Zlot Summerfield, Ryan Takaba and Angeliq Tassisstro. **Ongoing** - Featuring the largest selection of studio ceramics in Western North Carolina, including some of the finest art and craft to be found anywhere in Appalachia. We also represent select artists from around the country and their unique artwork. Representing more than 90 artists. Hours: Tue.-Sat., 10am-6pm and open daily Oct. - Dec. Contact: 828/688-3599 or at (www.crimsonlaurelgallery.com).

Michael Kline Pottery, 4062 Snow Creek Road, Bakersville. **Ongoing** - Featuring pottery by Michael Kline and jewelry by Stacey Lane. Contact: call 828/675-4097 or visit (<http://michaelklinepottery.blogspot.com/>).

Banner Elk Area

Alta Vista Gallery, 2839 Broadstone Road, (between Banner Elk and Boone) Valle Crucis. **Ongoing** - Featuring fine art gallery in historic farmhouse, located near the Original Mast General Store. In its 20th year and representing over 100 artists, the gallery specializes in oils and watercolors depicting mountain landscapes. Artists include: B. Jean Baird, Alan McCarter, Louise Pinto, Jean Pollock, Ray Byram, Joan Sporn, Elizabeth Ellison, Dotti Shelton. Also shown are original lithographs and original

continued on Page 63