

SCALA

Surrealist Painter

40 x 30 inches

Oil on Linen

"Magic"



www.peterscala.com
Studio: 843-225-3313



Karen Burnette Garner

~Artist~

Join us for the Annual Spring Show!
Saturday, May 30, 2015, 10AM—6PM
Meet the Artists—Demonstrations—Door Prizes

The Treasure Nest Art Gallery
1055 Johnnie Dodds Blvd., Suite 50
(Crickentree Village)
Mount Pleasant, SC 29464
843-216-1235

Curious? Visit at www.karenburnettegarner.com

Surface Craft Gallery

continued from Page 12

uses acrylic paint to create light, shadow and the desired depth of architectural element.

For further information check our SC

Commercial Gallery listings, call the gallery at 843/203-3849 or visit www.surfacegallerycharleston.com.

Corrigan Gallery in Charleston, SC, Offers Works by Lynne Riding

Corrigan Gallery in Charleston, SC, will present *In the Air*, featuring works by Lynne Riding, on view from May 1 - 31, 2015. A reception will be held on May 1, from 5-8pm.

This is Riding's fourth solo show at Corrigan Gallery with the previous ones having been titled as follows: *Paying Attention to What Happens Between the Obvious - An Inquiry Concerning Transparency* 2007; *Connections - An Inner Landscape* 2009; and *Scratching the Surface* 2011.

Riding describes this work, "I have a strong connection to the ocean both as an artist, observing the fluctuation and effect of the elements and as a past competitive windsurfer and sailor dealing with these same elements of nature. While soaking up the atmosphere, the erosion and much layered patina of the seashore, I continue my painting process of reduction, which involves a process of decision making in what to bury and what to reveal. Although my work is of an abstract nature, it always stems from the place and surroundings in which I find myself, from color observed, a line seen in space, or the found object. Through the study of landscape, history and the paths, major components in my work are the issues of shifting perspectives, loss, holding, and hope, that which drives us on. I believe that there is a validity or need for the poetic in today's world."

Riding has lived in Charleston for the past twenty years and holds a Masters of Fine Art from the San Francisco Art Institute, a Bachelors of Art in Fashion - Textiles



Work by Lynne Riding

from Manchester College of Art, UK and an Art Foundation from Hereford School of Art & Design, UK. Former academic chair of department at the Art Institute of Charleston and still teaching there, she continues to develop her own work.

Riding has had solo exhibitions at Zane Bennett Contemporary, Santa Fe and Beaufort Arts Council, as well as in Charleston. Her work has been included in group exhibitions such as the 2011 and the 2003 "Contemporary Charleston- Influence", City Gallery, "30th Parallel- a Convergence of Contemporary Painting" at the JMOA, Florida and "CYMK" in the TransAmerica Pyramid, San Francisco, California. She also showed in Charlotte, NC, "Trizec - 13th Annual" and "Places and Spaces: Landscape and Genre Scenes in the South" Gibbs Museum of Art, Charleston.

A native of Knighton, Wales, Riding's love of landscape has inspired her works that are simplistic in form that reinforces

continued above on next column to the right

the importance of line and space. By taking the work to the simplest form, the artist captures its true essence. This body of work is minimalist abstraction informed by the atmosphere and natural objects. It includes three dimensional pieces "incorporating site-specific found objects."

Following her education, Riding lived and worked in undertaking various commissions, mainly in London and Paris while also teaching figure drawing, design and painting, at a central London college. During this period, she was included in "Best of European Illustration," London. Since moving to Charleston, Riding has continued to exhibit widely and to develop her own work in drawing, painting, and printmaking. She

has taught at the College of Charleston as a full-time adjunct professor of fine art before beginning at the Art Institute of Charleston. Riding has shown her work in numerous solo and group exhibits nationally in addition to receiving a number of residencies.

Corrigan Gallery proudly presents local artists of museum caliber in an intimate setting - Art with a Future and a Past. The gallery also now locally represents the estate of Elizabeth O'Neill Verner and other second market pieces including works by Corrie McCallum from the family's collection.

For further information check our SC Commercial Gallery listings, call the gallery at 843/722-9868 or visit www.corrigangallery.com.

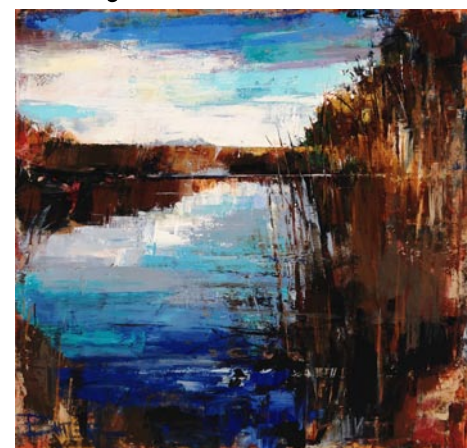
Wells Gallery on Kiawah Island, SC, Features Works by Curt Butler

The Wells Gallery on Kiawah Island, SC, will present Curt Butler, LIVE, featuring a new encaustic painting show by Curt Butler on May 8 & 9, 2015, from 1-6pm each day. Butler will paint live in the Wells Gallery and demonstrate his encaustic technique.

The artist will create a new piece from start to finish and answer questions. This event is open to the public at no charge.

Butler considers himself an artist who teaches and shares his knowledge with other aspiring artists. He has taught at various art schools including Braitman Studio, Gaston Day School, Gaston College, and Gaston School of the Arts. In 2002, he was honored with the Teacher of the Year Award at Gaston Day School for his outstanding teaching abilities.

Butler's current work is a mixture of oil paint and encaustic painting techniques. These techniques have afforded him the opportunity to experiment within the realm of mixed media. His paintings are often layered with multiple colors combinations that enhance the surface, creating a tactile effect. The textures are rich with both brushstroke and palette knife work. His paintings seem to come together at a distance with his imagery, and yet, work on a purely abstract level as you approach them.



Work by Curt Butler

Most of Butler's work is based in landscape yet it is not rooted in a particular place, but instead speaks to a general mood or feeling he has experienced from being surrounded by nature. His style is contemporary focusing on the flat abstract nature of the picture plane versus the illusion of space; and he skillfully balances both of these ideas into a singular piece. Butler is well known for his encaustic style. The word encaustic literally means "to burn in" and involves heating wax and mixing in col-

continued on Page 14