

Greenhill in Greensboro, NC

continued from Page 36

by the Mint Museum of Craft and Design, Charlotte.

A native of Japan, Hiroshi Sueyoshi studied at Tokyo Aeronautical College and served as apprentice to potter Masanao Narui in Mashiko before coming to North Carolina in 1971 to help design and build Humble Mill Pottery in Asheboro where he has worked for more than four decades. On his Eastern heritage Hiroshi has stated: "Some people say, 'Oh, your work is very Japanese influenced.' And sometimes Japanese friends come here and see my pots and say, 'Very much westernized.'" (*The Living Tradition*, p. 161) In recent years Sueyoshi has looked more closely at his Japanese heritage and his retrospective exhibition included two installations reflecting a restrained Zen esthetic: "Empty Bowls" a meditation on the Japanese tea ceremony, presented 68 stoneware soup bowls, each marking a year of Sueyoshi's life. "Rock Garden," featured stoneware "rocks" some resembling natural forms and others figures of the imagination, arranged in a configuration resembling a Japanese Zen garden. Sueyoshi's works have been exhibited nationally in private, corporate and institutional collections, including the Renwick Gallery in the National Museum of Ameri-



Work by Hiroshi Sueyoshi

can Art. In 2006 he was honored with the North Carolina Living Treasure award.

For further information check our NC Institutional Gallery listings, call 336/333-7460 or visit (www.greenhillnc.org).

Guilford College in Greensboro, NC, Offers Work by Senior Art Students

Guilford College in Greensboro, NC, will present *PITH: 2015 Guilford College Senior Thesis Art Exhibition*, on view in the Bauman Galleries, 2nd floor of Founders Hall, from May 1 - 15, 2015. A reception will be held on May 1, from 7-9pm.

The exhibition's title, *PITH*, reflects the students' desire to make art that is vigorous, substantial, and meaningful. Each of them draws upon her own sense of "pith," creating aesthetic surfaces that reflect inner core. Participating seniors include: Margaret Flath, Eleanora Keene, Raina Martens, Samantha Metzner, Isabel Ramirez, Samantha Saatzter, and Gloria Taylor-Williams.

Durham, NC, native Margaret Flath is a Bachelor of Arts candidate in ceramics. Her body of thesis work is comprised of a variety of functional forms meant for daily use - mugs, jars, and jugs. Flath employs the process of wood firing, and communicates her passion for mark making through crosshatched surface designs.

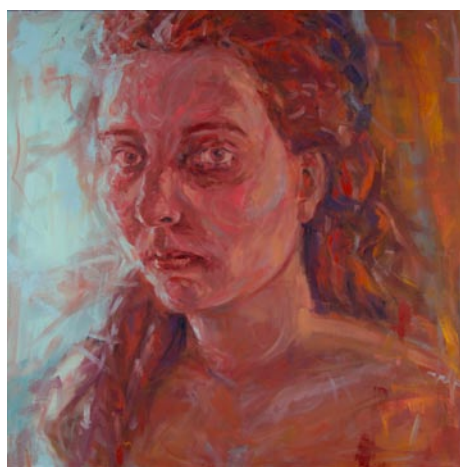
A Bachelor of Arts candidate in oil painting from Wittman, MD, Eleanora Keene draws from life experiences and travels to create vivid landscapes that reflect her personal connection with the natural world.

From Mount Rainier, MD, and Champaign, IL, Raina Martens is a Bachelor of Arts candidate in sculpture. Her thesis work uses glaze chemistry and functional ceramic forms to transform toxic coal ash collected from the Dan River in Eden, NC. Drawing from contemporary thought on the Anthropocene and modes of reparative critique, Martens explores material and corporeal realities of contemporary life. The work facilitates an aesthetic and intimate encounter with material from one of the largest environmental disasters in North Carolina.

Hailing from Chapel Hill, NC, Samantha Metzner is a Bachelor of Arts candidate in photography. Her cyanotypes and caffenol prints expand on a combination of contemporary identity theories and a rich history of alternative photographic processes.

From Hillsborough, NC, Isabel Ramirez is a Bachelor of Arts candidate in drawing, working most recently in mixed media and found object assemblage. Her thesis reveals an array of unexpected, sculptural relationships between the preserved and manipulated elements of decay. The work incorporates a collection of structures that illuminate the surreal dynamics of mental illness.

Greensboro, NC, native Samantha Saatzter is a Bachelor of Fine Arts candi-



Work by Samantha Saatzter

date with a focus in painting. Her series of portraits that embody a silent dialogue of human emotion and expression influenced by her personal connection to the people she paints.

Originally from Indianapolis, IN, Gloria Taylor-Williams is a candidate for the Bachelor of Fine Arts degree, with a concentration in oil painting. Her family and friends, in activities ranging from gardening to playing cards to making art and music, inspire her figurative narratives.

To participate in the optional honors *Senior Thesis Exhibition*, students must apply in their junior year and have at least a 3.25 GPA in art. Selected students partake in a rigorous program of independent work, group critiques, and a required professional practices course, which culminates in their final group exhibition.

The Art Department at Guilford College is a fine arts studio program, which provides an in-depth experience in making images and formulating and crafting ideas. Painting, Drawing, Printmaking, Sculpture, Photography and Ceramics are the primary focus areas. The classroom/studio is highly interactive and dynamic, and provides one-on-one instruction and guidance, as well as the support and stimulation of interchange with classmates. The distinction of the art major at Guilford College lies in the development of each student's creative potential.

Founded in 1837 by the Religious Society of Friends (Quakers), Guilford College is the third oldest coeducational college in the country. It is an independent North Carolina college.

For further information check our NC Institutional Gallery listings, call the Art Department at 336/316-2401 or visit (www.guilford.edu).



**North
Carolina
Pottery
Center**

SEAGROVE, NC

Museum Hours:
Tues-Sat 10am-4pm

Business Hours:
Mon-Fri 8:30am-5pm

233 East Avenue
Seagrove, NC
336-873-8430

info@ncpotterycenter.org
www.ncpotterycenter.org



NORTH CAROLINA POTTERY CENTER

Tyler White O'Brien Gallery in Greensboro, NC, Offers Works by Jenny Fuller, Angela Nesbit and Karen Lewit

Tyler White O'Brien Gallery in Greensboro, NC, is presenting *Local Ties*, featuring works by Jenny Fuller, Angela Nesbit and Karen Lewit, on view through May 14, 2015.

Each artist in this exhibit has a special local connection to this home town we call Greensboro, NC. Jenny Fuller grew up here and attended Grimsley High, she married her high school boyfriend before moving to Charlotte, NC. Angela Nesbit was born here. She attended Page High School, went to Chapel Hill, NC, for college and lived here for about 18 months after college before moving to Charlotte, NC, in 1989. She comes back to Greensboro often to visit her mom who still lives here. Local artist, Karen Lewit lives and has her studio here in Greensboro.



Work by Jenny Fuller

Jenny Fuller offers the following statement, "Painting is an attempt for me to understand the radiance, color, shadow and wonder that surrounds each of us in nature. Whether I am captivated by majestic trees, misty mountains or the vastness of the sea, it is the process of describing it in paint that truly fascinates me. Each time I try to interpret what I see onto a canvas, the process changes my basic understandings and I view the world differently."

"There exists a feeling of expansiveness for me in the outdoor world. The expression of a horizon or a woodland path offers that



Work by Angela Nesbit

same openness and sense of possibility for the viewer to move off the canvas and into their own world."

"I began painting with Andy Braitman of Braitman Studios in 2003 because I was drawn to learn how to create beauty instead of observing it," adds Fuller. "I have attended workshops with Cape Cod artists Cedric and Joannette Egeli, Durkin, Stephen Early and travelled and painted in Brantome, France with Connie Winters.

A graduate of the University of North Carolina at Chapel Hill, Fuller lives in Charlotte, with her husband Bill and their three sons.

Angela Nesbit effortlessly captures light, movement, and texture. Recognized for her portraits of children in motion and her unique style, she uses a palette knife to build energetic layers of paint on top of a heavily underpainted canvas. Nesbit's

continued on Page 38

Carolina Arts, May 2015 - Page 37

The deadline each month to submit articles, photos and ads is the 24th of the month prior to the next issue. This will be May 24th for the June 2015 issue and June 24 for the July 2015 issue.