

SECCA in Winston-Salem, NC

continued from Page 38

and Director of the Center for Documentary Studies at Duke University; and Reynolda House Museum of American Art staff including, Allison Slaby, Curator, Elizabeth Chew, Director of Curatorial and Educational Division, and Julia Hood, Coordinator of Education. A full program of events can be found at (www.secca.org).

Alternative Modernisms was organized by Cora Fisher, Curator of Contemporary Art at SECCA.

The Southeastern Center for Contemporary Art in Winston-Salem, NC, seeks to

enhance perspectives, inspire community and ignite new ideas at the intersection of art and its visitors. SECCA is an affiliate of the North Carolina Museum of Art, a division of the NC Department of Cultural Resources. SECCA receives operational funding from The Arts Council of Winston-Salem and Forsyth County. Additional funding is provided by the James G. Hanes Memorial Fund.

For further information check our NC Institutional Gallery listings or visit (www.secca.org).

Artworks Gallery in Winston-Salem Offers Work by Wendell Myers & Mona Wu

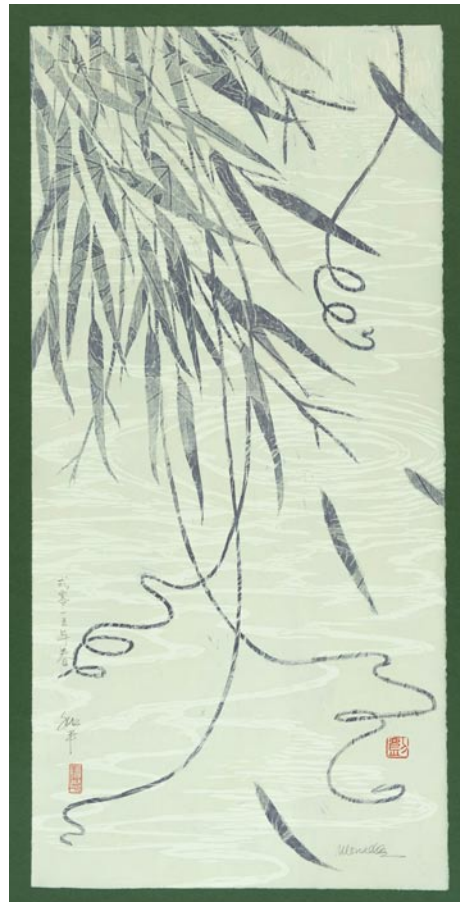
Artworks Gallery in Winston-Salem, NC, is presenting *Explorations in Color*, featuring paintings by Wendell Myers and woodblock prints by Mona Wu, on view through May 30, 2015. Receptions will be held on May 1, from 7-10pm and May 9, from 2-4pm.



Work by Wendell Myers

Wendell Myers attended art school in Milwaukee in the '70s and medical school in Winston-Salem in the '80s. He has practiced medicine in the Winston-Salem area for 20 years, and recently left his faculty position at Wake Forest School of Medicine to work part time, so that he could focus more time and attention on painting. About his paintings, he recently said, "Within the language of landscape, I am using motion, light, color and energy to evoke an emotional state, to create a sense of mystery."

Myers continues to explore the emotion inherent in landscape, particularly when it



Work by Mona Wu

is freed from the constraints of realism and naturalistic color choices.

Mona Wu is a native of China but has been living in NC since 1974. She received her Art History degree in 1996 from Salem College and had studied printmaking at Wake Forest University for over 16 years. Wu is a printmaker specialized in woodcut prints. Nature's beauty is her muse.

In this series of 14 prints, Wu uses the vertical panel format often found in traditional Chinese landscape paintings. Each of her works has 3 to 4 layers of printed images mingled together. In bold or opaque colors certain images dominate while others recede in transparent and soft shades. The finished product is the result of her exercises in exploring color relationship in relief prints.

For further information check our NC Institutional Gallery listings, call 336/723-5890 or visit (www.Artworks-Gallery.org).

Annette Bartlett-Golden's Spring Studio Show Takes Place in Greensboro, NC - May 2 & 3, 2015

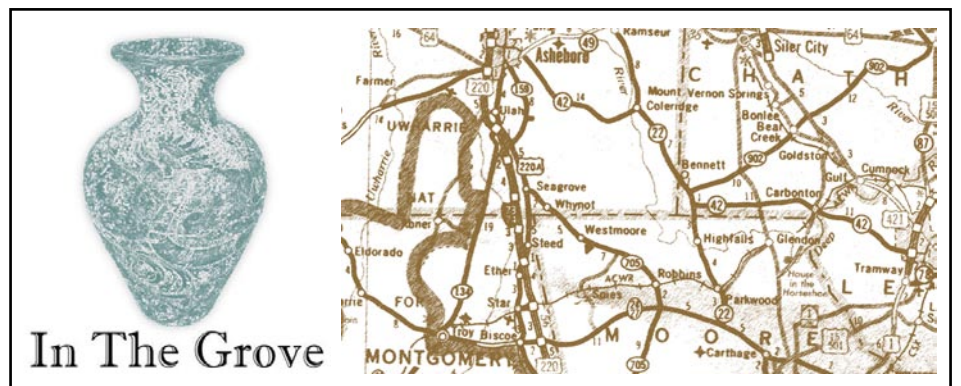
Greensboro, NC, artist Annette Bartlett-Golden will host a Spring Studio Show on Saturday, May 2, from 10am-5pm and Sunday, May, 3 from 1-5pm at 4101 Lawn-dale Place in Greensboro, near the Natural Science Center. The event will feature a selection of her artwork and note cards. The show will include refreshments, and free prints by Bartlett-Golden. Parking is available on the street. Admission is free.

Bartlett-Golden uses crisp lines and rich, vibrant colors to impart a sense of immediacy, vivacity and optimism to her oil paintings and watercolors on a variety of subject matters: local and foreign landscapes, exotic

and domestic animals, still lifes, and more. Recently, she participated in A Painting a Day challenge for the month of February. Artwork created by Bartlett-Golden during the painting challenge will be featured in this year's show.

An artist and art teacher for over 15 years, Bartlett-Golden's work has been shown locally and is in private collections both in the US and abroad.

For further information check our NC Commercial Gallery listings, contact Annette Bartlett-Golden at 336/288-0307 or e-mail to (mountaincanvas@gmail.com).



by Rhonda McCanless

Exciting events are happening in May in Seagrove. The North Carolina Pottery Center will open two new exhibitions, Bulldog Pottery will host Cousins in Clay and Kovack Pottery will hold their annual spring event.

Kovack Pottery's spring event is May 23 - 31, 2015. The event will feature a large selection of hand-built, hand-turned, hand-painted, numbered, limited edition pieces. Each piece comes with a certificate of authenticity signed by both the potter and the artist who created it. The shop is open Mon.-Sat., 9am to 5pm and Sun., noon-5pm.



Works from Kovack Pottery

Kovack Pottery is located at 1298 Fork Creek Mill Road in Seagrove. More information and a coupon for the event can be found at (www.KovackPottery.com).

Bulldog Pottery artists Bruce Gholson and Samantha Henneke will host five visiting potters for Cousins in Clay, May 30, 2015, 10am-5pm and May 31, 10am-4pm. Cousins in Clay is a contemporary pottery show and sale. Guest artists include Michael Kline, Bill Brouillard, Adam Field, Doug Peltzman and Henry Crissman.

Henry Crissman will bring his mobile anagama kiln and demonstrate wood firing throughout the event. Saturday, Chronis Pou Vasiliou will perform Greek Bouzouki music throughout the day. Adam Field and Doug Peltzman will present a pottery demonstration from 3-4pm.

The potters' potluck will be Sun. at noon. Everyone is welcome to bring a dish and join in the festivities. Bill Brouillard will present a pottery demonstration from 1:30-2:30pm.

Bulldog Pottery is located at 3306 US Highway 220 Alternate in Seagrove. More information can be found at (www.BulldogPottery.com).

The North Carolina Pottery Center will open two new exhibitions May 30, 2015. "Prized Pieces: The Makers Collection" illustrates that makers tend to be collectors.



Work by Bruce Gholson

Two pieces from each artist will be featured. One piece is created by the artist. The other piece is part of the artist's collection and made by someone else.

The second exhibition, "250 Mugs on the Wall," is a fundraiser for the NCPC and Seagrove Area Potters Association. All mugs will be collaborative creations by members of both organizations. Each mug will be specially stamped and available for \$25.

An opening reception for both exhibitions will be held May 30, 4:30-7:30pm. The reception is free and open to the public. "Prized Pieces" will run May 30 through Oct. 5, 2015. "250 Mugs" will run May 30 through July 25, 2015.

The NCPC is located at 233 East Avenue in Seagrove. More information can be found at (www.NCPotteryCenter.org).

The next STARworks Hot Glass Cold Beer evening is May 14, 2015. HGCB is on the second Thursday of each month, from 5:30-7:30pm. The public is invited to come watch a free hot glass demonstration. Visitors who are 21 and older can purchase a hand-blown STARworks glass and receive complimentary beer throughout the evening. Beer on tap will be from North Carolina breweries.

STARworks is located seven miles south of Seagrove at 100 Russell Drive in Star, NC. For more information, visit (www.STARworksNC.org) or call 910/428-9001.

Rhonda McCanless is editor and publisher of *In the Grove*, a periodic newsletter about Seagrove, NC, that focuses on pottery news. Click the link to see the latest issue. Rhonda works full-time for Central Park NC in Star, NC, and can sometimes be found at her husband's pottery shop, Eck McCanless Pottery, located at 6077 Old U.S. Highway 220 in Seagrove, NC. She can be reached by calling 336/879-6950 or e-mail to (professional_page@rtmc.net).

Check us out at (www.carolinaarts.com) or e-mail to (info@carolinaarts.com)

Discover the Seagrove Potteries

Seagrove is a Community of Working Potters & home to the North Carolina Pottery Center

You're invited....

to visit the Seagrove potters at their workshops & studios nestled in the countryside.

Experience a diversity of pottery from contemporary, one-of-a-kind art pottery, to traditional utilitarian forms, & folk art

It's an Adventure....

Pick up a free colored map at any of the pottery shops

Seagrove is located in the Center of North Carolina 40 miles south of Greensboro on Hwy. 220 (future I-73, I-74)

www.discoverseagrove.com

You can contact us by calling 843/825-3408 or by e-mail at - info@carolinaarts.com but do it before the 24th of the month prior to our next issue.