



FABULON

A Center for Art and Education

FabulonArt.com

843-566-3383

Susan@FabulonArt.com

1017 Wappoo Rd Charleston, SC 29407

North Charleston Arts Fest

continued from Page 6 / [back to Page 6](#)

Daniel D., live painting demos, hands-on art activities, a kid's zone, and more. It's a night of art and culture for the entire family to enjoy!

Public Art Installations will also be presented throughout North Charleston, on view during daylight hours, from May 1 - 31, 2017.

Concrete Jungle by Welles Worthen is located at Quarterman's Lake at Buist Avenue and Spruill Avenue. This sculpture plays on the relationship between the natural and the artificial. A hollow concrete structure resembling the form of a tree stands at 12 feet tall. From its branches sprout large "leaves" that serve as planters, housing a variety of live plants and flowers.

Crystal Clear by Anna Walker is located at greenspace in front of North Charleston Fire Dept., Station #6, located at 8100 Rivers Avenue. Inspired by the mysticism and beauty of crystalline solids, this large-scale structure uses steel rods and colorful shrink-wrap to form a cluster of crystals. As light shines through the translucent planes, the colors refract, contributing to the illusion that the geometric forms are glowing. Just as crystals are used to promote healing and serenity, this sculpture aims to provoke feelings of peace.

Diverse Harmony by Kristen Hurlburt is located at the median in front of Jerry Zucker Middle School, located at 6401 Dorchester Road. Repetition, rhythm, playfulness, and perspective are central to this abstract installation. Constructed primarily of colorfully painted and organically shaped rebar, the sculpture appears different from every angle. The varying sizes and colors represent diversity, while the patterned placement creates a sense of harmony.

Jelly-Anemone Hybrid by Grace Harrison is located at the traffic circle at Wescott Blvd. and Oak Forest Blvd.

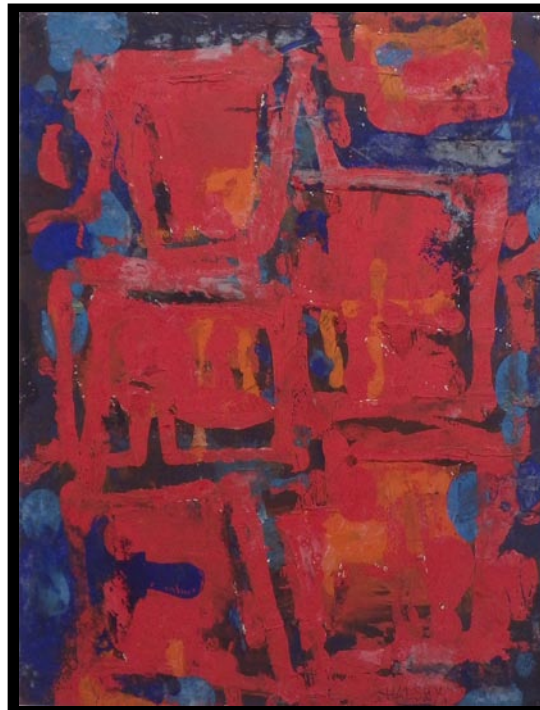
The artist's fascination with aquatic life combined with an imaginative and playful approach to the scientific ideas of biodiversity and evolution result in a 10-foot tall interpretation of a hybrid between a jellyfish and a sea anemone. Solar-powered spotlights incorporated into the piece add an ethereal quality that helps the viewer to envision the possibility of an obscure and captivating aquatic world in which such a creature could exist.

Lion of the Sea by Madison Bailey is located at the median on International Boulevard near Charleston Area Convention Center, located at 5001 Coliseum Drive. A steel frame depicting a large-scale skeleton of a Pterois, commonly known as a lionfish, appears to be partially embedded into the earth as if it was left over from prehistoric times. This species of fish is native to the Indo-Pacific, but was introduced to Atlantic waters during the 1980s. Since then, they have become extremely invasive due to the lack of predators in the Atlantic Ocean. This piece is meant to bring awareness to this current environmental issue.

Praying Mantis by Danielle Lewis is located at the greenspace at intersection of East Montague Avenue & Spruill Avenue. Standing at almost 8 feet tall and constructed entirely of scrap metal, this praying mantis lends itself to the illusion that it was once an operational machine that has become rusted and stagnant over time. By visually overlapping elements of nature with an imagined apocalyptic past (or future), the artist encourages viewers to consider the relationship between the natural world, humans, and advancing technology.

Southern Couture by Aliah Fickling is located at Palmetto Gardens Park, East Montague Avenue. The church hat is a distinct element of Southern Baptist church fashion. For many, the accessory

continued above on next column to the right



Duo by William Halsey, oil on paper, 11 x 15 inches

Halsey - McCallum Studio

William Halsey
& Corrie McCallum

Both recipients
of the
Elizabeth O'Neill
Verner Award

paintings • graphics • sculpture
for the discerning collector

For information:

David Halsey 843.813.7542
dhalsey917@comcast.net

is an expression of one's personality and style. This installation pays homage to the culture and pageantry of the coveted church hat, featuring three large-scale versions of these unique and extravagant fashion pieces.

The North Charleston Arts Fest is orga-

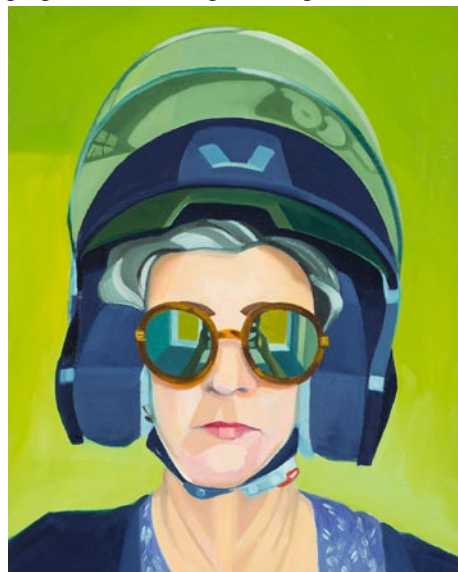
nized and presented by the City of North Charleston Cultural Arts Department.

For further information check our SC Institutional Gallery listings, call the Cultural Arts Department at 843/740-5854 or visit (www.northcharlestonartsfest.com).

Charleston County Public Library in Charleston, SC, Offers Works by Karyn Healey

The Main Branch of the Charleston County Public Library in downtown Charleston, SC, will present *Women's Work*, featuring works by Karyn Healey, on view in the Saul Alexander Foundation Gallery, from May 1 - 31, 2017. A reception will be held on May 5, from 4-6pm, during the Charleston Gallery Association Art Walk. It will be the first opportunity to view most of these works that visually honor women who challenge conventional perceptions of the "fairer sex."

Healey, a Summerville, SC, resident presents a series of works that captures the stories of some unique women and what they do. The process and planning began last summer as she considered the number of strong, creative women she knew, many of them living in the South and over 50, who were fortunately not stifled by social norms as young women. They include nurturers, teachers, organizers, and righters of wrongs. They are artists, scientists, risk takers and worker bees who every day get up and do the work that needs to be done. The show also includes some group participation components from women near and far of all walks of life and with different interests. Although their paths may not cross, they are all moving forward with purpose and a strong female gaze.



Work by Karyn Healey

For close to two and a half decades Healey has predominantly lived in the South before moving from Pittsburgh to the Charleston area in 2008, and in 2009 she



Work by Karyn Healey

began focusing her attention on plein air and studio oil painting.

Healey was born in New Jersey, grew up in Minneapolis and attended Iowa State University. In 1983 she received a BA in graphic design and worked for years as a graphic designer, and adjunct faculty member teaching design and typography at Pennsylvania College of Technology in Williamsport. Later she focused on art advocacy and art appreciation by re-designing and expanding a volunteer run program, "Art in Motion", for elementary schools in Sewickley, PA, which integrated art appreciation and the classroom curriculum which was an innovation at the time.

Healey's work has been included in shows at the Gibbes Museum of Art (Renovation Kick-Off Show, 2014), Easton Studio and School in Easton, MD (Holiday Show, 2013, 2015, 2016), the *MOJA Arts Festival Juried Art Exhibition* (2016), the *Piccolo Spoleto Juried Show* at City Gallery in Charleston (2016), the *Charleston Artist Guild Signature Show* (2016) and *Member's Show* (2017). You can also see her paintings at the Charleston Artist Guild Gallery in Charleston where she is a board member.

For further information check our SC Institutional Gallery listings, call Frances Richardson at 843/805-6803 or visit (www.ccpl.org).

So you're the Marketing Director of a visual arts organization, art museum, arts center, arts council or artist guild and you're wondering why you never see the exhibits presented at your facility included here, or maybe you're the owner of a commercial art gallery and you've never seen your exhibits included with others presented in your area. You might even be an individual artist who is having an exhibit in a non-profit space or commercial space and you don't see your exhibits included. My question to you is - How long will you put up with that before you ask someone why that is the case? If you're not included - it's your fault.