

NC Commercial Galleries

continued from Page 58

Pinehurst - Southern Pines Area

Broadhurst Gallery, 2212 Midland Rd., Pinehurst. **Ongoing** - Featuring works by regional, national and international artists. Hours: Tue.-Fri., 11am-5pm & Sat., 1-4pm. Contact: 910/295-4817 or at (www.broadhurstgallery.com).

Hollyhocks Art Gallery, 905 Linden Rd., one mile from Pinehurst next to Elliott's restaurant, Pinehurst. **Ongoing** - Featuring original work by award winning local artists Jane Casnelie, Diane Kraudelt, Irene McFarland, Paula Montgomery, and Robert Gera. Offering a wide range of work from contemporary to traditional, the gallery includes portraiture, vibrant Tuscan scenes, palpable pet portraits, beautiful florals and more, in a wide variety of mediums including oils, acrylics, pastels and unusual black and white washes. Hours: Mon.-Sat., 10am-9:30pm. Contact: 910/255-0665 or at (www.HollyhocksArtGallery.com).

One of a Kind Gallery, LLC, 128 W. Pennsylvania Ave., (Belvedere Plaza) Southern Pines. **Ongoing** - The Gallery is located in what was once an old hotel building (built in 1905). One of a Kind Gallery occupies three "hotel rooms" plus two alcoves, making it ideal for displaying fine art. The works of 25 artists are featured in the Gallery, with a wide range of media represented: photography, painting, pottery, sculpture, notecards, painted silk scarves, basketry, jewelry, scented candles, clocks, and fiber arts. All of the art is for sale. Hours: Tue.-Sat., 10am-5:30pm and open until 7pm on Fri. Contact: 910/725-0465 or at (www.oneofakindgalleryllc.com).

Pittsboro

All In One Pottery, 115 Hobbs Road, Pittsboro. **Ongoing** - The pottery houses an eclectic mix of hand-painted maiolica dinnerware, pitfired & raku vases, and hand-crafted musical instruments by Allen McCanless; as well as pitfired sculptural ceramic artwork by Louise Hobbs McCanless. Hours: by appointment only. Contact: 919/542-6162

Liquidambar Gallery, 80 Hillsborough Street, Pittsboro. **Ongoing** - We represent over 75 different artists in the retail store and both, Kitty and John the store owners, are artists as well. We carry handmade, one-of-a-kind artwork - everything from local pottery, jewelry, steel, glass, baskets, cards, fine art, and hand turned wood items. In the front gallery we have new featured artists, with a reception on First Sundays, 2-4pm. Hours: Wed.-Sat., 10:30am-5:30pm and Sun., noon-4pm. Contact: 919/542-1773 or at (www.liquidambarstudio.com).

The Joyful Jewel, 44-A Hillsborough Street, Pittsboro. **Ongoing** - Featuring local art fresh from the Heart. Mariah Wheeler is shoppe keeper at this gallery/gift store in downtown Pittsboro. We feature exquisite art and gifts from over ninety local artists, with a price range to suit your budget. You will find baskets, books, jewelry, cards, paintings, photography, sculpture, from glass, wood, clay, fiber, and more. On Fri. evenings the gallery features local musicians, poets, and other performance art with a wide array of talent. Hours: Mon.-Sat., 10:30am-5:30pm & Sun., noon-4pm. Contact: 919/883-2775 or at (www.joyfuljewel.com).

Raleigh Area

Adam Cave Fine Art, 2009 Progress Court, Raleigh. **Ongoing** - Representing a select group of regional and nationally known artists, including Joseph Cave, David Hewson, Stephen Aubuchon, Wayne Taylor, and Donald Furst. The gallery will also be introducing some new, young talent to the area, including Massachusetts painter Jennifer O'Connell. Hours: Tue.-Sat., 11am-5pm & by appt. Contact: 919/838-6692 or at (www.adamcavefineart.com).

Artcraft Gallery, 406 W Hillsborough Street, Raleigh. **Ongoing** - Funky, functional and fine art by several co-op artists. Hours: Mon.-Thur., 9am-5pm; Fri., 9am-1pm & 1st Fri., 6pm-midnight. Contact: 919/832-5058 or at (www.artcraftsignco.com).

ArtSource Fine Art & Framing, 4421-123 Six Forks Road (behind Bonefish Grill, across from Brother's Cleaners at North Hills...look for the red door), Raleigh. **Ongoing** - ArtSource is a fine art gallery housing over 1,600 works of art by 65+ artists. This award-winning gallery has assisted collectors and businesses in the selection of fine art, custom art pieces and framing for over 20 years. Hours: Mon.-Sat., 10am-6pm

and Sun., 1-5pm. Contact: 919/787-9533, or at (www.artsource-raleigh.com).

Ashley's Art Gallery, 701 N. Main St, located 12 miles south of Raleigh, Fuquay-Varina. **Ongoing** - Featuring fine art originals by national and local artist including Terry Isaac, Braldt Bralds and John Weiss and reproductions by Pino, Robert Bateman, Carl Brenders, Bev Doolittle and William Mangum. Hours: Mon.-Thur., 11am-6pm & Fri.-Sat. 10:30am-5pm. Contact: 919/552-7533 ext.3 or at (www.ashleyart.com).

Flanders Gallery, 505 S. Blount Street, Raleigh. **Ongoing** - Flanders Gallery is committed to cultivating the careers of emerging artists. Through its rigorous exhibition program, the gallery continues to explore new concepts in contemporary art using various media. Flanders Gallery is dedicated to exhibiting provocative and innovative contemporary art, producing 14-18 exhibits each year both in the gallery and in alternative exhibit spaces. Hours: Wed.-Sat., 11am-6pm. Contact: 919/757-9533 or at (<http://flandersartgallery.com>).

Gallery C, 540 North Blount Street, Raleigh. **Through May 14** - "The Best of North Carolina 2019". Gallery owner and art historian Charlene Newsom employs her broad knowledge of North Carolina art to curate an extensive collection, all of which are landmark pieces by important North Carolina artists. Some of the biggest names and best North Carolina art from the 19th and 20th Centuries are included in this year's show. Hours: Tue.-Fri., noon-6pm; Sat., 11am-5pm & Sun., 1-5pm. Contact: 919/828-3165 or at (www.galleryc.net).

Glenwood Gallery Art & Antiques, 610 W. Johnson St., Raleigh. **Ongoing** - Featuring works by Edwin D. Alexander, Barbara Evans, Michael Manas, Nancee Clark, Michael Van Horn, Rob Cox, Jim Green, Stan Strikland, Mark Tomczyk. Hours: Call. Contact: 919/829-7202.

Litmus Gallery & Studios, 312 W. Cabarrus Street, (across the tracks from Amtrak Train Station) Raleigh. **Ongoing** - Regional emerging and/or established artists are featured every month with a reception from 6-9pm the first Friday of each month. Studios of resident artists are open for touring, viewing, and selling of art (paintings, sketches, sculptures, pottery, mixed media, photography, etc.). Hours: Thur., 10am-2pm or by appt. Contact: 919/571-3605 or at (www.litmusgallery.com).

Local Color Gallery, Carter Building, 22 South Glenwood Ave., Raleigh. **Ongoing** - The gallery has now grown into a women's artist cooperative 13 members strong. Hours: Thur., Fri., & Sat., 11am-3pm. Contact: 919/754-3887 or at (www.localcolorraleigh.com).

Nicole's Studio & Art Gallery, 719 N. Person St., Raleigh. **Ongoing** - The gallery represents local and nationally recognized artists in all genre specializing in excellence in Contemporary Realism. Up to 20 artists represented include; Rick McClure, Lori Putnam, Dawn Whitelaw, Nicole Kennedy, Kim Maselli, Dan Nelson. Hours: Tue.-Fri., 10:30am-5pm; Sat., noon-4:30pm; and 1st Fri., till 8:30pm. Contact: 919/838-8580 or at (www.nicolestudio.com).

Roundabout Art Collective, 305 Oberlin Road, Raleigh. **Ongoing** - Bringing together a diverse group of Wake County artists who have created a magnet location for exhibiting and selling art. Hours: Wed.-Sat., noon-5pm, and Sun., 1-5pm. Contact: 919/747-9495 or at (www.roundaboutartcollective.com).

The Mahler Fine Art, Mahler Building, 228 Fayetteville St., Raleigh. **Through May 3** - "New Works by Marty Baird." **Through May 10** - "RESONANT," new works by Linda Ruth Dickinson. As a self-taught artist born and raised in Asia to Americans, Linda Ruth Dickinson's art seeks a universal and transcendent understanding. Translating her vision primarily through paint on panel or canvas, Dickinson attempts a charting of hope within various forms - whether in an exploration displayed by abstract imagery or that reminiscent of a familiar terrestrial perspective. Dickinson has been the recipient of several regional and national awards, including a Sotheby's Award for Outstanding Work. **Ongoing** - Featuring a dynamic venue dedicated to significant art of our time, committed to offering the best in regional and national fine art by emerging and established artists. Hours: Tue.-Fri., 11am-5pm; Sat., noon-4pm. Contact: 919/896-7503 or at (www.themahlerfineart.com).

311 - Martin St Gallery and Studios, 311 Martin Street, Warehouse District, Raleigh. **Ongoing** - Featuring three exhibit galleries, studios by tenant artists, The Print Studio, and the meeting place for The North Carolina Printmakers. Hours: Tue.-Sat., 11am-6pm and 6-9pm on 1st Friday of the month. Contact: 919/821-2262 or at (<http://311gallery.com/>).

Tippling Paint Gallery, 428 S. McDowell Street, Raleigh. **Ongoing** - The gallery is a group of artists that have worked together since 2009 planning and hanging exhibits, marketing, community outreach, and supporting and encouraging each other in our artistic endeavors. In 2011, the group found a great location in the heart of downtown Raleigh where we opened Tippling Paint Gallery in June. Our mission is two-fold: to exhibit quality art on a year-round basis and to continue to strive for personal artistic growth. Hours: Thur., 11am-3pm; Fri., 11am-3pm & 5-8pm; Sat., noon-8pm or by appt. Contact: 919/928-5279.

Randleman

Joseph Sand Pottery, 2555 George York Road, Randleman. **Ongoing** - Featuring wood-fired, salt and ash glazed pottery by Joseph Sand at kiln openings held three times each year. Hours: by appt. only. Contact: 612/518-4051 or 336/460-0259 and at (<http://www.jsspottery.com/>).

New Salem Pottery, 789 New Salem Road, Randleman. **Ongoing** - Established in 1972, New Salem Pottery is owned and operated by Hal Pugh and Eleanor Minnock-Pugh. Hal and Eleanor produce a variety of original redware and stoneware pottery. Years of work at the wheel and the subtle evolutionary convergence of originality with past traditions make their pottery recognizable by its own style. The slip decorated redware pitcher shown above is illustrative of their art. Hours: Wed.-Sat., 10am-5pm. Contact: 336/498-2178 or at (www.newsalempottery.com).

Rutherfordton

Ornamentals and Finer Welding, Inc., 142 West Court St., Rutherfordton. **Ongoing** - Featuring works by master artisan Tom Eifers. Hours: Mon.-Fri., 9am-5pm and Sat., 10am-5pm. Contact: 828/288-3001 or at (www.ornamentals1.com).

Salisbury/Spencer

Green Goat Gallery, 516 S. Salisbury Ave., just off I-85, across from the North Carolina Transportation Museum, Spencer. **Ongoing** - Housed in the historic 20th century Sands Building, the gallery features fine and folk art, photography, exquisite handcrafted functional crafts and jewelry, and eclectic recycled and found art by local, regional, and national artists. Hours: Tue.-Sat., 10:30am -5:30pm. Contact: 704/639-0606 or at (www.greengoat-gallery.com).

Pottery 101, 101 S. Main St., from I-85, take exit #76 (Innes St.) toward downtown - we are on the corner of Innes and Main, Salisbury. **Ongoing** - The destination for beautiful hand-crafted pottery. Hours: Tue.-Fri., 10am-6pm & Sat., 10am-5pm. Contact: 704/209-1632.

Rail Walk Studios & Gallery, 409 - 413 N Lee St., in the Rail Walk Arts District, Salisbury. **Ongoing** - Featuring works on display by Marietta F. Smith, Sharon Forthofer, Karen Frazer, Kenneth Koskela, Elizabeth H. McAdams, Julie Pontell and Keyth Kahrs. Each of the artists has a unique style and body of work. Visitors will find original art in oil, acrylic, watercolor, pastel, and other mediums, as well as sculpture, hand-made jewelry, pottery, and digital photography, making Rail Walk a great place to purchase a wide variety of original art in all price ranges. Hours: Thur.-Sat., 11am-4pm. Contact: 704/431-8964 or at (www.railwalkgallery.com).

Southern Spirit Gallery, 102 South Main St., Salisbury. **Ongoing** - The shop offers a wide array of art and crafts from over 60 artists, most from North Carolina. There is jewelry, paintings, glass and pottery. Hours: Mon.-Sat., 10am-5pm. Contact: 704/633-0761.

Saluda Area

Heartwood Contemporary Crafts Gallery, 21 East Main Street, Saluda. **Ongoing** - Featuring contemporary works of handmade wearables, jewelry, paper, paintings, fine porcelain, stoneware, glass, metal and wood. Hours: Mon.-Sat., 10am-5pm & Sun., noon-5pm. Contact: 828/749-9365 or at (www.heartwoodsaluda.com).

Seagrove Area

Throughout Seagrove, June 1, from 10am-5pm & June 2, from noon-4pm - "Seagrove

Wood Fire NC Weekend Pottery Tour". You're invited to join us as we open up our studios for your visit. Learn more about the Seagrove tradition and wood-fire kilns. Talk with our potters about their craft. And enjoy the wide-open spaces in and around scenic Seagrove. The tour wraps up at 5pm, when festivities move to nearby Star-WorksTap Room in Star, NC. Meet us there for a meet-and-greet to celebrate our local artists, with a food truck and microbrews on site. Join us for Day Two of our first-ever Weekend Pottery Tour. Visit our studios to learn more about the Seagrove tradition and wood-fire kilns. Talk with our potters about their craft. And enjoy the wide-open spaces in and around scenic Seagrove, North Carolina. **ADMISSION IS FREE.** Participating potteries include: Ben Owen Pottery, Blue Hen Pottery, Chad Brown Pottery, Daniel Johnston Pottery, Donna Craven Pottery, From the Ground Up, Johnston & Gentithes, Jugtown Pottery, Kate Johnston Pottery, Levi Mahan Pottery, Luck's Ware, Studio Touya, and Stuempfle Pottery. For further info visit (www.seagrovewoodfire.com).

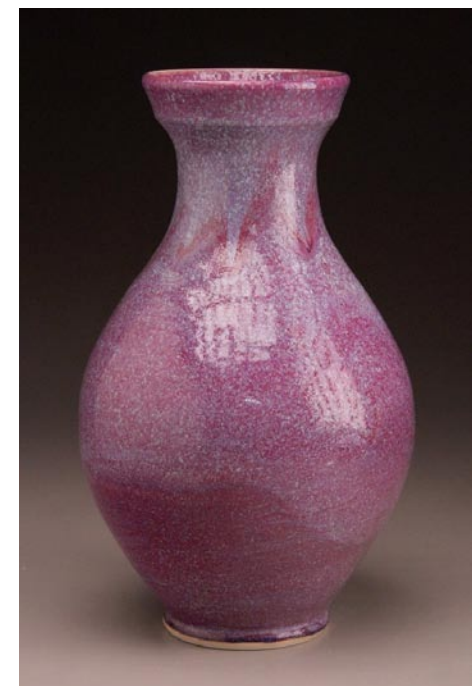
A. Teague Pottery/EJ King Pottery, 2132 Hwy. 705, Seagrove. **Ongoing** - Featuring works by several potters form the "village" with their traditional shapes of the Seagrove area. Contemporary, electric fired stoneware. Traditional glazes and melted glass glaze. Hours: Mon.-Sat., 10am-5pm. Contact: 910/464-5400.

A.R. Britt Pottery, 5650 Hwy, 220 S., Seagrove. **Ongoing** - Hand-turned/handmade traditional Seagrove style pottery, original formulated glazes, and functional stoneware in the tradition of Nell Cole Graves style by Aaron R. Britt. Hours: Tue.-Sat., 9am-5pm & Sun., noon-6pm. Contact: 336/873-7736 or at (www.seagrovepottery.net).

Albright Pottery, 6597 New Center Church Rd., Seagrove. **Ongoing** - Featuring traditional, salt glaze and red functional pottery by Arlie G. Albright. Hours: Tue.-Sat., 9am-5pm. Contact: 336/879-4209.

Anita's Pottery & Dogwood Gallery, 2513 Hwy. 705, Seagrove. **Ongoing** - Turning since 1987, Anita Morgan is best known for her miniature pottery, but also has many functional and decorative items. Glazes include cobalt blue, burgundy, hunter green, shiny black, yellow, rose pink, earthy brown, lime green and purple. Hours: Mon.-Sat., 10am-5pm. Contact: 336/879-3040 or at (www.anitaspottery.com).

Avery Pottery and Tileworks, 636 Potters Way, Seagrove. **Ongoing** - Finely crafted ceramic forms by Blaine Avery. Extraordinary vessels, unique hand-painted titles. Hours: Tue.-Sat., 10am-5pm. Contact: 336/873-7923 or at (www.averypotteryandtileworks.com).



Work by Ben Owen III

Ben Owen Pottery, 2199 S. Hwy. 705, Seagrove. **Ongoing** - Wood-fired, traditional and contemporary works using local clay by Ben Owen III. Colors ranging from Chinese red to Chinese blue. Hours: Tue.-Sat., 10am-5pm (closed in Jan.). Contact: 910/464-2261 or at (www.benowenpottery.com).

Blue Hen Pottery, 247 West Main Street, Seagrove. **Ongoing** - Narrative pots for daily use. Wood-salt stoneware and colorful earthenware. Hours: Wed.-Sat., 10am-5pm or by appt. Contact: 336/653-9551 or at (www.bluehenpottery.com).

Blue Stone Pottery, 2215 Fork Creek Mill Rd., Seagrove. **Ongoing** - Featuring traditional, functional stoneware pottery. Hours: Tue.-Fri., 10am-4pm & Sat., 9am-5pm. Contact: 336/879-2615 or e-mail at (audreyvalone@bellsouth.net).

continued on Page 60