

SC Commercial Galleries

continued from Page 46

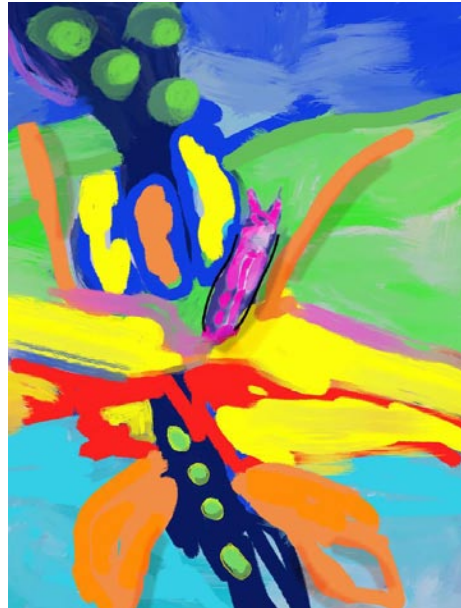
of a consummate host, always focused on the vibrant days of hospitality. Emeline's accommodations provide a warm welcome after a busy day exploring all the notable points of interest that lie just outside its doors. This captivating refuge with 212 all-king bed guest rooms includes 128 luxury suites and 16 double king bed accommodations. Hours: reg hotel hours. Contact: 843/577-2644.

Chesterfield

Douglas Gallery, 144 Main St, Chesterfield. **Ongoing** - Featuring the works of Jonathan Douglas. Fine art oil and watercolor paintings primarily focused on local scenery painted plein air and in studio. Hours: open by appt. only. Contact: e-mail at (144main@gmail.com) or at (www.douglasgallery.org).

Columbia Area

Congaree Vista Area, downtown Columbia, **3rd Thursday of every month, 5-8pm** - "Third Thursday Art Night in the Vista," including: Koger Center for the Arts Plaza Stage, One Eared Cow Glass, Lewis + Clark, Mike Williams Art, and Stormwater Studios. Contact: at (www.stormwaterstudios.org).



Work by Alicia Leeke

Alicia Leeke Fine Art Studio, 3821 Edinburg Rd., Columbia. **Ongoing** - Featuring original acrylic cityscapes, abstracts, monotypes, and drawings on canvas and fiber. Giclee's on canvas and paper also available. Hours: by appt. only. Contact: 803/429-5456 or at (www.alicialeeke.com).

ArtCan Studio & Gallery, 108 Beaufort Street, Chapin. **Ongoing** - Featuring original paintings, handpainted furnishing, and limited and open edition lithographs by Judy Bolton Jarrett. Hours: Thur. & Fri., noon-5:30pm; Sat., noon-4pm or by appt. (call before coming). Contact: 803/345-6588 or at (www.judyjarrettgallery.com).

Artsy Fartsy Art Gallery and Coffee Bar, 906 Knox Abbott Drive, Cayce. **Ongoing** - Featuring art by local artists and cafe and wine bar. We also have MIND GRAVY which is our poetry night every wed 8-10pm. Hours: Wed.-Sat., 7pm-2am. Contact: 803/7084731 or e-mail at (Ladyartnsoul@gmail.com).

Bella Vista Art & Framing, 705 Gervais St., downstairs of City Market Antiques, Columbia. **Ongoing** - Featuring original works of art of varied national artists, regional artists, vintage art, antiquarian engravings and etchings, original photography. Also a Mort Kunstler dealer and large selection of SC artists, giclees, and limited edition prints. And, offering a full service custom framing shop featuring professional, quality framing at below industry prices. Hours: Tue.-Sat., 10am-5:30pm. Contact: 803/765-0808 or e-mail at (bellavistaart@bellsouth.net).

Carol Saunders Gallery, 922 Gervais St., Columbia. **Ongoing** - Featuring fine art objects and works by local artists, including Mana Hewitt, Stephen Chesley, Carol Pittman, Mike Williams, Laura Spong, Heidi Darr-Hope, Judy Hubbard, Jeri Burdick, Clay Burnett, and Eddie Bryan. Hours: M-F, 10am-5:30pm; Sat., 11am-5pm. Contact: 803/256-3046.

City Art, 1224 Lincoln Street, Columbia. **Main Gallery, Currently on view** - Original Abstract Paintings by Michael Patterson". Patterson said, "I intend for my paintings to become enrichments in my own journey toward appreciation of the arts. I wish for an individual to connect with a painting that provokes and maintains the initial reaction when first viewed. But mostly I want you to appreciate the process so your investment will continue to be endeared." **Ongoing** - Featuring

works by Jane Aldridge, Jim Arendt, Randolph New Armstrong, Penny Baskin, Jo Dean Bauknight, Robbie Bell, Kimberly Betchman, Tarleton Blackwell, Angela Bradburn, Betty Bramlett, Joe Byrne, Carolita Cantrell, Kathy Casey, Anne Cunningham, Bob Doster, Gerard Erley, Claire Farrell, Amy Fichter, Tim Floyd, Michael Fowler, Teri Goddard, Harriet Goode, Vanessa Grubbs, Randy Hanna, Shelley Hehenberger, Mana Hewitt, David Kessler, Jan Kransberger, Robert Lyon, Rena MacQueen, Doug McAbee, Fred McElveen, Esther Melton, Max Miller, Lee A. Monts, Marge Loudon Moody, Blake Morgan, Bruce Nellsmith, Heather Noe, Susan Nuttall, Patrick Parise, Ann Hightower-Patterson, Leslie Pierce, Carol Pittman, Sylvia Ady-Potts, Alex Powers, Brian Rego, May Reisz, Tom Risser, Peggy Rivers, Cindy Saad, Sara Schneckloth, Ed Shmunes, Wanda Steppe, Nancy Thompson, Teri Tynes, Yisha Wang, Wendyth Wells, Sam Wilkins, Rod Wimer, and Katarina Zaric. This represents a rare opportunity to view a very wide range of acclaimed SC artists at one time. City Art features three distinct gallery spaces. A complete fine artists supply store is located on the lower level. Fine custom designer framing is available at City Art. In addition the Gallery is often host to a variety of events hosted by rental clients. City Art is a wonderful space to enjoy and purchase original art, art supplies, fine framing, take art classes and have wedding receptions, etc. Hours: Mon.-Thur., 11am-4pm; Fri., 11am-3pm; and Sat., 11am-3pm. Contact: 803/252-3613 or at (www.cityartonline.com).

Havens Framemakers and Gallery, 1616 Gervais St., Columbia. **Ongoing** - Exhibiting paintings by local artists: Jamie Blackburn, Diane Gilbert, Betsy Havens, Rob Shaw, Steven Whetstone, James E. Calk and others. Featuring an extensive collection of handcarved museum quality frames. Art and frame restoration. Hours: Mon.-Fri., 9:30am-6pm; Sat., 10am-5pm. Contact: 803/256-1616 or at (www.havensframemakersandgallery.com).

HoFP, 2828 Devine Street, Columbia. **Ongoing** - Featuring original works of art from around the world and around the corner. Hours: Mon.-Fri., 9am-5:30pm; Sat., 10am-5pm, & by appt.. Contact: 803/799-7405 or at (www.hofpgallery.com).

im-mer-sion, an interactive art space, @ Main Course, 1626 Main Street, Columbia. **Ongoing** - im-mer-sion showcases a variety of interactive art room exhibits created by local, SC-artists. Spend the afternoon with friends taking fun and creative photos, or host an event with champagne and charcuterie boards. The options are limitless. Hours: Mon.-Thur., 11am-11pm & Fri.-Sun., 9am-11pm. Contact: 814/795-3843 or at (www.immersionsc.com).

Lewis & Clark Gallery, 1001 Huger Street, behind One Eared Cow Glass, Columbia. **Ongoing** - Featuring work by Clark Ellefson and other contemporary artists. Hours: Mon.-Fri., 9am-6pm; Sat., 9am-3pm & by appt. Contact: 803/765-2405 or at (www.lewisandclarklamps.com).

Michael Story Studio/Gallery, 116 Brook Trout Ct., Lexington. **Ongoing** - Featuring traditional landscapes in oil & pastel by Michael Story. Giclee & reproduction prints. Hours by appt. only. Contact: 803/356-4268 or at (www.michaelstory.com).

Mike Brown Contemporary, (formerly if ARTS) 1223 Lincoln St., Columbia. **Ongoing** - Featuring works by Roland Albert, Carl Blair, Michael Brodeur, Michaela Pilar Brown, Beverly Buchanan, Ashlynn Browning, James Busby, Michael Cassidy, Steven Chapp, Stephen Chesley, Diane Kilgore Condon, Jeff Donovan, Mark Flowers, Mary Gilkerson, Klaus Hartmann, Leslie Hinton, Sjaak Korsten, Peter Lenzo, Reiner Mahrlein, Sam Middleton, Jaime Misenheimer, Philip Morsberger, Dorothy Netherland, Marcelo Novo, Jay Owens, Hannes Postma, Anna Redwine, Paul Reed, Edward Rice, Silvia Rudolf, Kees Salentijn, Laura Spong, Tom Stanley, Leo Twigg, Katie Walker, David Yaghjian and Aggie Zed. Hours: Mon.-Fri., 11am-7pm and Sat., 11am-5pm. Contact: 803/446-3399 or e-mail to (assistant@mikebrowncontemporary.com).

Mike Williams Art, 1221 Lincoln Street, Columbia. **Ongoing** - Mike Williams, born 1963 in Sumter, SC, received his BFA from the University of South Carolina in 1990. In 1988 he began his professional career as a fine artist and sign painter while finishing his degree. He has been prolific throughout the past three decades creating more than 4000 works. Hours: Tue.-Fri., 11am-6pm or by appt. and 3rd Thur. 5-8pm. Contact: 803/206-9600.



Work by Susan Lenz

Mouse House, Inc/Susan Lenz Studio, 2123 Park St. (historic Elmwood Park), Columbia. **Ongoing** - Featuring the working studio, original fibers, and mixed-media artwork by Susan Lenz. After 14 years at Vista Studios, Susan will now be working at Mouse House. Also offering custom picture framing as well as a wide selection of antiquarian prints and beveled mirrors. Hours: Mon.-Fri., 9:30am-5pm & most Sat., 10am-2 pm. Contact: 803/254-0842; at (www.susanlenz.com); or (www.mousehouseinc.blogspot.com).



Work by Noelle Brault

Noelle Brault Fine Art, 2305 Park Street, (historic Elmwood Park) Columbia. **Ongoing** - Noelle Brault is an impressionist artist who utilizes a unique blending of vibrant colors to capture the beautiful light and shadow found in South Carolina's Lowcountry and her native home of Columbia. Hours: by appt. only. Contact: 803/254-3284 or at (http://www.noellebrault.com).



View inside One Eared Cow Glass

One Eared Cow Glass Gallery & Studio, 1001 Huger St., Columbia. **Ongoing** - Handblown glass by Tom Lockart and crew, including perfume bottles, ornaments, vases, sculpture, bowls, and paperweights, in all price ranges. Hours: Mon.-Fri., 9am-5pm & Sat., 10am-4pm. Contact: 803/254-2444 or at (www.oneearedcow.com).

Over the Mantel Gallery, 3142 Carlisle Street, Columbia. **Ongoing** - OTM Gallery opened in Columbia, South Carolina in 2013 and has since earned awards for "Best Columbia Metropolitan Art Gallery" (2018) and "Best Columbia Metropolitan Gallery for Local Art" (2019). OTM is owned by Julia Moore and operated by Julie Coffey. Its purpose is to offer original artwork to the community at affordable prices. OTM brokers approximately 50 extremely talented artists most of whom maintain residences in the southern states of the US. Hours: Tue.-Sat., 11am-5pm. Contact: 803/719-1713 or at (https://overthemantel.com/).

Prompt Designs Art Gallery, 3041 N. Main St., near where the train trussel crosses Main St., Columbia. **Ongoing** - Featuring original oils and giclees by Porter O'Brien Dodd. Hours: Mon.-Sat., 10am-6pm. Contact: 803/252-2927 or e-mail at (promptdesigns@bellsouth.net).

Rob Shaw Gallery and Framing, 324 State Street, West Columbia. **Ongoing** - The gallery features palette knife paintings by Rob Shaw as well as rotating shows from local and national artists. I have included a calendar for upcoming artists and events on my website. Hours: Mon.-Fri., 10am-6pm & Sat., 11am-4pm. Contact: 803/369-3159 or at (www.robshawgallery.com).

State & Frink, 2025 State Street, Cayce.

Ongoing - A rental event space, work space & gallery. Featuring works from members of the Cayce Arts Guild. Hours: by appt. only. Contact: Ashley Hunter by e-mail at (ahunter@mpastrategies.com) or at (Stateandfrink.com).



Work by Lucy Bailey

Stormwater Studios, 413 Pendleton Street, behind One Eared Cow Glass Gallery & Studio and Lewis + Clark Gallery, Columbia. **Main Gallery, Through May 7** - "Bits & Pieces," a group exhibition featuring works by Jeri Burdick, Janet Kozachek, Cameron Porter, Mary Robinson, Janet Swigler, and Olga Yukhno. **May 10 - 21** - "LIFE.FORMS," featuring fixed media interpretations by Lucy Bailey and K. Wayne Thornley. The artists challenged themselves to work with materials and techniques outside their usual mediums of clay sculpture and paintings on canvas. Bailey's works incorporate a variety of stitching, dyeing and found objects on salvaged garments to interpret the ways life forms us. An opening reception will be held May 11 from 5-8pm at the gallery. There will also be an artists' talk on May 21 at 2pm. The show will be open daily from 11am-3pm, except on May 15 when the gallery is closed. **May 30 - June 4** - "Midlands Clay Arts Society Semi Annual Show and Sale". **Ongoing** - Resident artists include: Eileen Blyth, Stephen Chesley, Gerard Erley, Heidi Darr-Hope, Pat Gilmartin, Robert Kennedy, Sharon Licata, Michel McNinch, Kirkland Smith, and David Yaghjian. Hours: Wed.-Sat., 10am-5pm; Sun. 1-4pm or by appt. Contact: at (www.stormwaterstudios.org).

The TRAC Gallery & Studio, 140 State Street, West Columbia. **Ongoing** - Founded in 2016, Twin Rabbit Artist Collective came together in response to a need for something better for artists and art lovers in Columbia, SC. The competition for outstanding artwork and teaching positions is fierce, and the TRAC is all about giving working artists a landing pad, a launching site to help further their professional careers as both artists and educators. We knew the best way to help local artists and our community was to create a place just for that purpose. We are local with a network of galleries across the United States, working to make a difference for artists, art lovers, and our community. Hours: Wed.-Fri., noon-7pm; Sat., noon-5pm & Sun., noon-4pm. Contact: 803/381-0498 or at (www.thetracgalleries.com).

Village Artists, Village at Sandhill, 631-8 Promenade Place, next door to Panera, off Two Notch and Clemson Rds., near I-20, Columbia. **Ongoing** - The gallery features the works of 28 local artists offering: workshops, monthly shows and exhibits. Hours: Mon.-Sat., 10am-9pm & Sun., noon-6pm. Contact: 803/699-8886.

Vista Art & Frame, 1752 Airport Blvd., Cayce. **Ongoing** - Featuring paintings of the South by Stephen O. Gunter. Hours: M.-Thur., 10am-6pm; Fri., 10am-4pm; & Sat., 10am-2pm. Contact: 803/794-7252 or at (www.vistaart.com).

ALTERNATE ART SPACES - Columbia **Grapes and Gallery**, 1113 Taylor Street, across the street from Oliver's mission, Columbia. **Ongoing** - Serving craft beer, wine bar and painting studio. Hours: Wed.-Fri., 4-9:30pm & Sat., noon-9:30pm. Contact: 803/728-1278 or visit (www.grapesandgallery.com).

Conway

Conway Glass Center, 708 12th Ave., historic Creel Oil building Conway. **Ongoing** - Featuring an open-air gallery and glass educational studio dedicated to raising the awareness of the visual arts in Conway and Horry County, SC. Hours: Tues., Thurs. & Fri., by appt. 10am-5pm; & Wed., 10am-5pm, no appt. needed. We have self-service pickup available 24 hours a day. Contact: 843/248-3558, or at (www.conwayglass.com).

continued on Page 48