

# NC Commercial Galleries

continued from Page 72

## Statesville

**Village Pot Shop Fine Arts and Crafts Gallery**, 248 N. Center St., 2 Blocks North of the Center of town on the right, Statesville. **Ongoing** - Our mission is to provide a showcase for local and regional artists and artisans, providing high-quality decorative and functional arts and crafts to patrons with an eye for the finer things. Our arts and crafts galleries feature handmade jewelry, blown glass, woodwork, regional pottery, metalwork, mosaics, hand-woven fibers, paintings and more. So, whether you are interested in: vases, bowls, paper weights, fanciful ornaments, stained glass, sun-catchers, decorative boxes, exquisite bowls turned from found pieces of wood, each one of a kind, watercolors, baskets, ceramics, fine photography, prints, collages or oil paintings. We also offer classes and workshops by local and regional artists. Hours: Tue.-Fri., 10:30am-5pm & Sat., 10am-4pm. Contact: 704/380-4689.

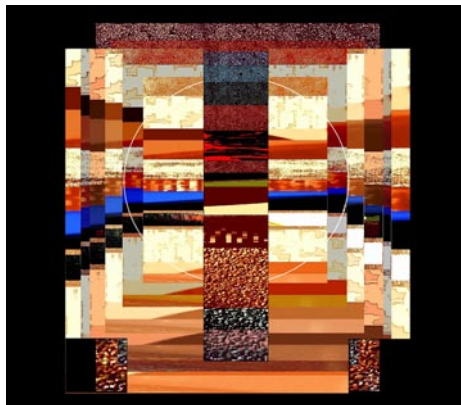
## Sylva

**Karcher Stone Carving Studio & Gallery**, 260 North Beta Road, off US 74, Sylva. **Ongoing** - Featuring a working studio and gallery with stone carvings by Collene Karcher, executed in marble, alabaster, and limestone with steel and aluminum introduced at times. Hours: by appt only. Contact: 828/586-4813 or at (www.collenekarcher.com).

## Tryon

**Carri Bass Photography and Art Studio**, 158 N. Trade Street, Tryon. **Ongoing** - Carri Bass Art studio is located in the heart of Tryon. It is in a wonderful old building with great lighting and a dedicated studio section, in addition to gallery space for monthly art exhibits. Hours: by appt. Contact: 864/598-9880 or st (carribass.com).

## Valdese



Work by Rodger Revlon

**Play It Again Records Building**, 150 West Main Street, Valdese. **New Window Gallery, May 5 - 29** - Featuring acrylic collage and computer art by Rodger Revlon. Revlon resides in Valdese, NC, and is active in the local arts community. He enjoys working with collage using acrylics and other paints, paper, glue and canvas. Hours: 24/7. Contact: David Mench by e-mail at (Wagglestone@yahoo.com).

## Wadesboro

**Old Mill Gallery & Studios**, Lockhart-Taylor Center, 514 N. Washington St., Wadesboro. **Ongoing** - At the gallery visitors will see artwork by regional artists which includes: original paintings in oil, acrylic & watercolor, that range from landscapes to abstracts; photography; works in copper and copper repousse; ceramic creations, custom sculptured and functional; art glass jewelry, jewelry made from beads of Swarovski crystal; hand-stitched quilts of exquisite designs; hand painted goblets, pitchers and vases; wood sculptures and turnings, and more. Hours: Mon.-Thur., 10am-5pm; Fri., 10am-3pm or by appt. Contact: 704/272-5464 or at (www.oldmillgallery.org).

## Waxhaw

**Stewart's Village Gallery**, 116 McDonald St., Waxhaw. **Ongoing** - Featuring pottery by Bill Stewart, as well as works by over 300 other artists including both decorative and functional handmade pieces. The gallery is filled with pottery, jewelry, wrought iron, garden accents, decorative whimsy and so much more. Hours: Mon.-Sat., 10am-5pm & Sun., 1-5pm. Contact: 704/843-5638 or at (www.stewartsvillagegallery.com).

## Waynesville

**Balsam Ridge Gallery**, 44 North Main Street, Waynesville. **Ongoing** - Fine art gallery featuring paintings of Western NC mountain vistas and beyond. Hours: daily 11am-6pm, but call ahead.

Contact: 828/234-1616.

**Cedar Hill Gallery**, 196 N. Main Street, Waynesville. **Ongoing** - Featuring the art of Gretchen Clasby and 83 incredible artisans. Hours: Mon.-Sat., 10:30am-5:30pm. Contact: 828/421-6688 or at (https://www.cedarhillstudio.com/).

**Jo Ridge Kelly Fine Art**, a gallery and teaching studio, 136 N. Main Street, Waynesville. **Ongoing** - Featuring the painting of Jo Ridge Kelly. Hours: Thur.-Sat., noon-6pm and Sun.-Wed., by chance or appt. Contact: 828/226-0549 or at (www.JoKelley.com).

**Moose Crossing's Burl Wood Gallery**, 101 N. Main Street, Waynesville. **Ongoing** - Featuring rustic Burl furniture with an elegant finish. Two generations of Metzgers, source, design and craft burl. We are fortunate to have talented craftsmen working with us. It is our pleasure to coordinate efforts as a team. The focus is on the end product as an art piece. Hours: Mon.-Sat., noon-5pm or by appt. Contact: 828/452-2550 or at (https://burlgallery.com/products/burl-wood-sculpture).

**T. Pennington Art Gallery**, 15 N. Main Street, Waynesville. **Ongoing** - Featuring pencil drawings of local scenery, and landmarks by Teresa Pennington, including originals, prints and gift items. Also framing is available. Hours: Mon.-sat., 10am-5pm. Contact: 828/452.9284 or at (www.tpennington.com).

**The Jeweler's Workbench**, 80 N. Main St., Waynesville. **Ongoing** - Specializing in fine hand-crafted jewelry, custom design and repair, limited edition watches and jewelry boxes. Featuring award-winning artists of the Great Smoky Mountains and from across the country. Hours: Mon.-Sat., 10am-5:30pm. Contact: 828/456-2260.

**Twigs & Leaves**, 98 N. Main Street, Waynesville. **Through June** - Featured artist is Phyllis Vaughn. Visit the gallery during the Waynesville Artwalk on June 3, from 6-9pm, with a demo by featured artist Phyllis Vaughn, Piano by Judy Phillips from 6:30-8:30pm. **Ongoing** - Featuring the nature-related porcelain works with leaves by Kaaren Stoner, as well as other works by regional artists and craftsmen. Hours: Mon.-Sat, 10am-5:30pm. Contact: 828/456-1940 or at (www.twigsandleaves.com).

## Weaverville

**Mangum Gallery**, 16 North Main Street, Weaverville. **Ongoing** - Featuring functional and decorative pottery dinnerware. Hours: Mon.-Fri., 9am-5pm and Sat., 10am-4pm. Contact: 828/645-4929 or (www.mangumpottery.com).

**Miya Gallery**, 31 N. Main St., Weaverville. **Ongoing** - The gallery is a new and refreshing addition to the WNC art scene. We exhibit work of over 50 artists: fine jewelry, clay, wood, glass, metal, fiber, photography and two dimensional art. Hours: Tue.-Fri., 10am-6pm; Sat., 10am-5pm & Sun., noon-4pm. Contact: 828-658-9655 or at (www.miyagallery.com).

## West Jefferson/Jefferson

**Ashe Custom Framing & Gallery**, 105 S. Jefferson Ave., West Jefferson. **Ongoing** - Featuring a varied selection of originals and prints by local and regional artists. Also, a wide array of pottery and handcrafted wooden vases. Hours: Tue.-Fri., 10am-5pm & Sat., 10am-2pm. Contact: 336/246-2218.

**Broomfields Gallery**, 414 E. 2nd St, (across from the post office), West Jefferson. **Ongoing** - Featuring an exhibition of works by NC and SC artists in various mediums in a setting of quality antiques. Hours: Tue.-Sat., 11am-5pm. Contact: 336/846-4141 or at (www.broomfieldsgallery.com).

**CatchLight Gallery**, 118 N Jefferson Avenue, West Jefferson. **Ongoing** - The CatchLight gallery is dedicated solely to the art of photography. In the Spring of 2012, photographer Nicole Robinson decided to create a space where talented photographers would have an opportunity to display and sell their work. A beautiful gallery space grew from a dream into a wonderful reality, evolving into a haven which became available to both the photographers and the viewing public in the arts district of downtown West Jefferson, NC. Hours: Mon., Thur., Fri., & Sat., 11am-5pm & Sun., 11am-4pm. Contact: 336/846-1551 or at (www.CatchLightGallery.net).

**Prack Studio / Sculpture Garden**, 431 Sunnyside Park Road, Jefferson. **Ongoing** - Featuring sculptures by Mary-Ann Prack. Hours: open



Works by Mary-Ann Prack

by appt only. Contact: 828/406-7046 or at (www.prackart.com).

**Stephen Shoemaker Studio**, 113 S. Jefferson Ave., West Jefferson. **Ongoing** - Featuring original works by watercolorist Stephen Shoemaker. Specializing in historic landscapes and paintings of places and events in/of Ashe County and the area. The "Virginia Creeper" train series is particularly popular. Hours: Mon.-Fri., 10am-5pm or by chance. Contact: 336/246-3401.

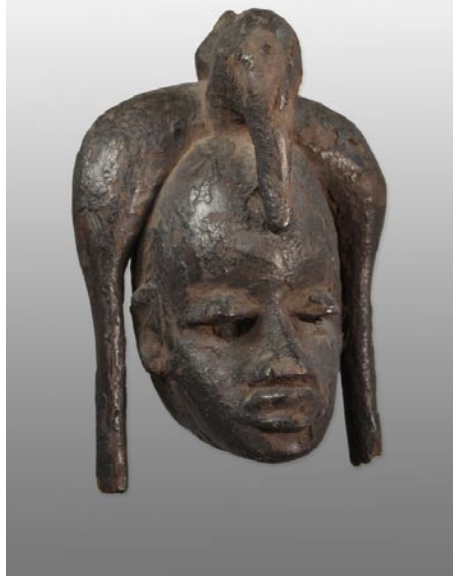
## Wilmington

**Downtown Wilmington. May 28, 6-9pm** - "Fourth Friday Gallery Nights," featuring a free monthly event where downtown galleries and studios open their doors to the public in an after-hours celebration of art and culture. The art walk is a self-guided tour featuring exhibitions of various artistic genres including oils, acrylics, watercolors, pastels, metals, ceramics, mixed media and more. Maps are available at all participating locations as well as the Visitors and Convention Center. For more info visit (www.wilmingtonfourthfridays.com).

**Acme Art Studios**, 711 N. 5th Ave., downtown Wilmington. **Through May 21** - "Peace Be with You: Art by Mio Reynolds". **Ongoing** - Featuring works by Cass Baes, Gary Breece, Todd Carignan, Karen Paden Crouch, MJ Cunningham, Dumay Gorham, Amy Grant, Stephanie Holt, Fritz Huber, Marshall Milton, Trey Moore, Allan Nance, Dick Roberts, Angela Rowe, Angie Sinclair, Pam Toll, Michael Van Hout, Mark Weber, and Katherine Wolf Webb. Hours: Every 4th Friday Night, 6-9pm and by appt. Contact: Amy Grant e-mail at (grantamyn@gmail.com), call 910/805-8424, or (https://www.facebook.com/acmeartstudios).

**Art In Bloom Gallery**, 6866 Main Street, Mayfaire Town Center, Wilmington. **Ongoing** - The gallery presents original art by national and local artists. Different artists are featured every 6 weeks along with an ongoing display of new art from the gallery's 30 core artists at (https://aibgallery.com/artists/). Online and in the gallery, visitors will find a mixture of traditional and contemporary paintings, sculpture, jewelry, ceramics, glass, fabric, photography, and mixed media. Hours: Mon.-Sat., 10am-7pm; Sun, noon-6pm; and by appt. Contact: 484/885-3037 (mobile) or visit (https://aibgallery.com/).

**Beck Fine Art**, 545 Castle Street, Wilmington. **Ongoing** - features some of the best in national talent for representational and abstract art. Being the main gallery and home of award-winning artist, Dan Beck, the gallery not only represents some of Dan's best work but other artists with exceptional talent and accomplished art careers. Hours: Tue.-Sat., 11am-5pm. Contact: 910/264-2392 or at (www.beckfineart.com).



Works from Charles Jones African Art

**Charles Jones African Art**, 311 Judges Road, Unit 6-E, Wilmington. **Ongoing** - A gallery dedicated to the traditional arts of West and

Central Africa, with over 35 years experience in building fine collections for collectors and museums. Inquiries are welcome. Consultation, research and appraisal services available for individuals, estates and institutions by ISA certified appraiser, Maura Kropke. Exhibitions arranged and curated with essays by major scholars. Hours: Mon.-Fri., 7:30am-4:30pm. Contact: 910/794-3060 or at (https://charlesjonesafricanart.com/).

**ERA 20th Century Furniture and Art Gallery**, 523 South 3rd St., Wilmington. **Ongoing** - Inviting emerging artists of all sorts, to fill the quiet space with cutting edge art that not only is pleasant to view, but also thought-provoking. Unique modern furnishings from the mid-20th century complement the contemporary art. Hours: Wed.-Sat., 11am-5pm or by appt. Contact: 910/612-0542.



Work by Ginny Kelly Lassiter

**Gallery Citrine**, 17 S 2nd Street, Wilmington. **Through June 30** - Featuring works by Ginny Kelly Lassiter. **Ongoing** - Featuring works by BJ Grimmer, PD Chisholm, Kathy Schrum Peck, Nancy Lang Miller, Brooke Eagle, Deb Williams, Meroy Wheatley, Sue Cunningham, Chris Pfund, Donna Launey, and Robin Jones. Hours: Thur.-Sun., noon-4:30pm or by appt. Contact: e-mail to (gallerycitrine@gmail.com) or at (https://gallerycitrine.com/).



Work by Janet B. Sessoms

**Janet B. Sessoms Studio@ the ArtWorks**, 200 Willard Street, Wilmington. **Ongoing** - Featuring works by Janet B. Sessoms. Hours: call for hours. Contact: 910/840-0208, e-mail at (jbsessoms47@ec.rr.com) or at (www.janetb-sessoms.com).

**New Elements Gallery**, 271 North Front Street, Wilmington. **Ongoing** - Featuring works by regional and nationally recognized artists. We offer a wide variety of contemporary fine art and craft, including paintings, sculpture, ceramics, glass, fiber, jewelry and wood. Hours: Tue.-Sat., 11am-6pm or by appt. Contact: 910/343-8997 or at (www.newelementsgallery.com).

**Port City Pottery & Fine Crafts**, at The Cotton Exchange, 307 North Front Street, Wilmington. **Ongoing** - Celebrating ten years in business, Port City Pottery & Fine Crafts, in the historic Cotton Exchange in downtown Wilmington, is the first gallery in Wilmington dedicated exclusively to local, handmade, one-of-a-kind, three-dimensional art and craft by jury-selected coastal North Carolina artisans. We present decorative and functional works in clay, fiber/textiles, gourds, baskets, jewelry, mixed media, glass and wood in a beautiful setting in this early 20th century historic building. Handmade objects, whether held, worn, or displayed, enrich our lives by connecting us with our humanity, creativity, and our history. It is evident when you enter Port City Pottery & Fine Crafts that all of the Gallery members are pursuing not only art but their passion. Hours: Mon-Sat., 10am-5:30pm & Sun. noon-4pm. Contact: 910/763-7111 or at (www.portcitypottery.com).

**The Art Factory**, 21 Surry Street, Wilmington. **Ongoing** - We are located in the warehouse district on the edge of beautiful Historic Downtown Wilmington, North Carolina. In addition to our retail galleries, the Art Factory Gallery houses a number of studios for working artists and a Wine Bar featuring distinctive Yadkin Valley North Carolina wines, available by the glass while you enjoy the galleries. Hours: call about hours. Contact: 910/399-3793 or visit (https://www.facebook.com/ArtFactoryGallery/).

continued on Page 74