

Lark & Key Gallery and Boutique in Charlotte, NC, Offers Group Exhibit

Lark & Key Gallery in Charlotte, NC, will present the exhibit, *Second Nature*, on view from June 1 through July 30, 2011.



Work by Dawn Rentz

Second Nature features the work of Susan Hall, Duy Huynh, Angie Renfro and introduces Dawn Rentz into the gallery's roster of artists. Working in different styles and mediums, each artist is inspired by the natural world, whether literally or in a more abstract manner. A bee is not just a bee and a flower is not just a flower; through the use of color, line, form and composition the artists have a visual vocabulary that speaks beyond the obvious.

Susan Hall, a Chicago based painter

and printmaker, has a way with conveying the contemplative and quiet nature of her subjects. Realistic images of animals such as sheep, deer, rabbits and birds are softened by the use of lace or other textural qualities.

Charlotte, NC, based Duy Huynh is also co-owner of Lark & Key. Huynh is known for his figurative paintings that draw inspiration from storytelling in formats that range from music and movies to ancient folklore and comic book adventures. Huynh's clever and oftentimes humorous use of symbolism and wordplay invites the viewer to create his or her own storyline.

Angie Renfro, another Chicago based artist, captures the simple in landscapes. Her oil paintings evoke a sense of nostalgia that is countered by her contemporary painting style. Her bold strokes and color palettes create tension with her calm and austere compositions. Subjects such as bees, weeds and nests are celebrated for their quiet, unassuming beauty.

Asheville, NC, based Dawn Rentz creates multi-layered landscapes that have been influenced by her background in textile design. Block printed backgrounds, which are subtle and atmospheric, are layered with clusters of flowers that have been stripped to their absolute simplest forms.

For further information check our NC Commercial Gallery listings, call the gallery at 704/334-4616 or visit (www.larkandkey.com).

Providence Gallery in Charlotte, NC, Features Works by Dru Warmath

Providence Gallery, located in historic Myers Park, in Charlotte, NC, will present an exhibition of select works from nationally acclaimed artist, Dru Warmath. This extensive show, on view from June 7 - 30, 2011, will introduce two new series, "Intimate Spaces," and "Hikers." Avid collectors of Warmath's popular series, "Coastal Landscapes" will be excited to find new works from this collection represented as well.



Work by Dru Warmath

Warmath is an accomplished artist who has been painting professionally for two decades. An elected member of the National Watercolor Society, Warmath's innovative choice of subject matter and approach to the canvas has been rewarded with numerous awards and recognition in competitive shows on a regional and

national level.

Warmath describes the content of her artwork as an illustration of her study of relationships: relationships between people, the relationship between each of us and the natural world, and the complicated relationship between conceptual color and abstracted shapes.

As a painter, Warmath does not seek to recreate a realistic recreation of her subject. She strongly emphasizes her goal to record her emotional response to her inspiration for painting, and then use her technique of working with abstracted shapes and vibrant color to engage the observer and inspire them to contemplate the interplay of relationships found in each of her paintings.

Warmath's "Intimate Spaces" series invites the viewer into the painting to explore the interaction between the figures and explore and enjoy the surprises offered by Warmath's deft use of subtle nuances that repeatedly reclaim the observer's attention.

The "Hikers" series is particularly personal to Warmath and her family, since these works are inspired by frequent hiking excursions in the Blue Ridge Mountains, "a favorite family activity."

Warmath's "Coastal Landscapes" series is also one that she holds close to her heart, as it allows her to continue exploring her endearing love for the beautiful South Carolina coast, "a place she still calls home."

Providence Gallery has been serving Charlotte and the Carolinas for 33 years.

For further information check our NC Commercial Gallery listings, call the gallery at 704/333-4535 or visit (www.ProvidenceGallery.net).

Jerald Melberg Gallery in Charlotte, NC, Offers Works by Raul Diaz & Ernesto Berra

Jerald Melberg Gallery in Charlotte, NC, is presenting the exhibit, Raul Diaz and Ernesto Berra: *Dos Artistas de Cordoba*, on view through June 25, 2011.

The celebrated Argentine artist Raul Diaz was born in 1952 in Cordoba, Argentina, where he continues to live and work. Although Diaz studied architecture, he could not avoid the irresistible call within himself to be an artist. He is well known in South America and is rapidly

gaining recognition in Europe and the United States for his compelling, dream-like paintings and sculpture. In 2010, Diaz was honored with a solo exhibition at the Museo Caraffa in Cordoba.

continued above on next column to the right



gaining recognition in Europe and the United States for his compelling, dream-like paintings and sculpture. In 2010, Diaz was honored with a solo exhibition at the Museo Caraffa in Cordoba.



Work by Raul Diaz

Diaz's highly textured surfaces reveal images of boats, kites, roses, and shells amid peaceful figures. Evoked by the artist's memories of his childhood, these mysterious images are deeply personal, yet they provide a comfortable place where we all may recollect our own family histories and consider the future.

Ernesto Berra, a lifelong resident of Cordoba, is one of Argentina's most prominent and established artists. Since he began exhibiting his work in 1969, Berra has been honored with well over fifty solo and group exhibitions. Most recently the artist was given a major solo exhibition at the Museo Caraffa in Cordoba. His work can be found in numerous public and private collections, including the Museum of Latin American Art in California.

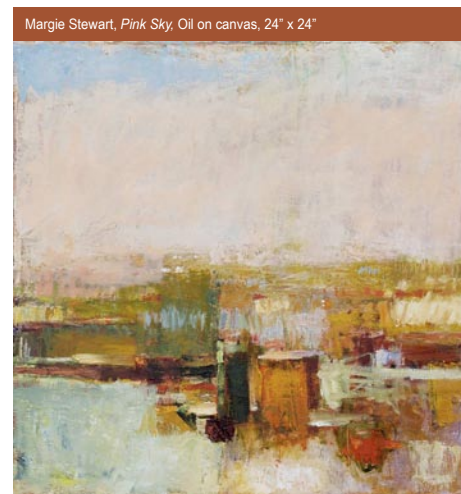
Described as an urban landscape artist, Berra's collaged paintings often reflect Cordoba's aging structures that have begun to crumble with time. In an effort to preserve a bit of the past, Berra will often visit such sites, gather remnants from decaying buildings and incorporate them into his work.

For further info check our NC Commercial Gallery listings, call 704/365-3000 or visit (www.jeraldmelberg.com).

Green Rice Gallery in Charlotte, NC, Features Works by Catherine Eble

Green Rice Gallery in Charlotte, NC, will present the exhibit, *Blurring the Lines*, featuring photographs by Catherine Eble, on view from June 3 - 26, 2011. A reception will be held on June 3, from 7-9pm.

NoDa resident and photographer Cath-



Margie Stewart, *Pink Sky*, Oil on canvas, 24" x 24"

ON VIEW
Gallery Artists

HODGES
TAYLOR

art consultancy

Providing expertise to businesses and individuals. Connecting the public with artists in meaningful ways through projects, programming and community partnerships.

401 North Tryon Street
Charlotte, North Carolina 28202
704.334.3799
www.hodgestaylor.com

erine Eble will make her debut showing at the Green Rice Gallery. The collection of photographs exhibits the elaborate and arduous transition of a female performer from her natural, effeminate state into her bold, masculine character. Viewers peek

continued on Page 17