



Giclée Fine Art Printers

inkpressions®

www.inkpressionsllc.com



Attention Artists!

Let Us Do It!

Your Artwork on Fine Art Canvas or Watercolor Paper



Helen Beacham

Summerville, SC

• Prints & Canvasses

• Full Color Banners

• Scanning Services

• Full Color Notecards
& Rack Cards

Summerville, SC/Savannah, GA
(843) 821-8084

Serving the Art Community from New York to Charleston to Laguna Beach

All work done on premise

Quick

FULL COLOR
SPOT COLOR
B & W

Tees & Mugs

SAME DAY
NEXT DAY
DAY AFTER

Personalized Coffee Mugs

- Travel Mugs • License Plates
- Children's Plastic Mugs
- Puzzles • Plates

Customize with

- birthday bible verses
- favorite sayings
- favorite character
- photo(s)
- logos
- choose one of our layouts

PHOTOGRAPHIK 821-3686
100 OLD TROLLEY RD SUMMERVILLE, SC 29485

INKPRESS@BELLSOUTH.NET
INKPRESS.SC@GMAIL.COM

College of Charleston in Charleston, SC, Features Works by Alyson Shotz

The College of Charleston in Charleston, SC, is presenting *Alyson Shotz: Force of Nature*, featuring a solo exhibition of new and recent work by Brooklyn-based sculptor Alyson Shotz, on view at the Halsey Institute for Contemporary Art, through July 11, 2015.

In this exhibition Shotz examines the properties and interactions of light, gravity, mass, and space. *Force of Nature* will showcase a broad range of the artist's creative output. The exhibition - Shotz's most ambitious to date - will feature over fifty works including large-scale sculptures, prints, ceramics, a wall drawing, and an animation. Employing nontraditional materials such as glass beads, linen thread, stainless-steel filaments, and welded aluminum to construct large-scale abstract works, Shotz expands upon conventional notions of sculptural space and form.

Shotz will create several new and site-specific works, including a large wall drawing comprised of white linen thread strung on carefully sited nail heads. College of Charleston students will assist her in the realization of the installation. Expanding the exhibition beyond the Halsey Institute's galleries and into the Cato Center for the Arts, Shotz will create a band of vinyl decals, which will be on view long-term, that produce the effect of etched glass on windows. The delicate etchings, composed of forms resembling ovals in rotation, are reminiscent of a Möbius strip exploring the geometric concept of a continuum—a shape without boundaries or end.

Alyson Shotz: Force of Nature, was organized in collaboration with the Wellin Museum of Art at Hamilton College in Clinton, New York and curated by Director Tracy L. Adler. A fully illustrated monograph accompanying the exhibition features essays by Adler; Mark Sloan, Director of the Halsey Institute; Veronica Roberts, Curator of Modern and Contemporary Art at the Blanton Museum of Art at the University of



"Recumbent Folds" by Alyson Shotz

Texas, Austin; and Nat Trotman, Associate Curator at the Solomon R. Guggenheim Museum, New York. The monograph will be available in late summer 2015.

Shotz received a BFA from the Rhode Island School of Design and an MFA from the University of Washington in Seattle. Shotz is currently a research fellow in the Arts Institute at Stanford University (2014-2015). Shotz's work has been exhibited both nationally and abroad at major institutions including the Eli and Edythe Broad Museum (East Lansing, Michigan); Espace Louis Vuitton (Tokyo, Japan); Solomon R. Guggenheim Museum (New York); Indianapolis Museum of Art; Nasher Sculpture Center (Dallas, Texas); Phillips Collection (Washington, D.C.); San Francisco Museum of Modern Art; Visual Arts Center at the University of Texas, Austin; Wexner Center for the Arts (Columbus, Ohio); and Yale University Art Gallery (New Haven, Connecticut). In addition to exhibiting across the US, Shotz has shown in Canada, China, England, France, India, Japan, Lithuania, Spain, Sweden and Switzerland.

The Halsey Institute of Contemporary Art at the College of Charleston provides a multidisciplinary laboratory for the production, presentation, interpretation, and dissemination of ideas by innovative visual artists from around the world. As a non-collecting museum, we create meaningful interactions between adventurous artists and diverse communities within a context that emphasizes the historical, social, and

continued above on next column to the right

cultural importance of the art of our time. For further information check our SC Institutional Gallery listings, call the Institute

at 843/953-4422 or visit (www.halsey.cofc.edu).

Charleston Artist Guild in Charleston, SC, Features Works by Lynne Fraser

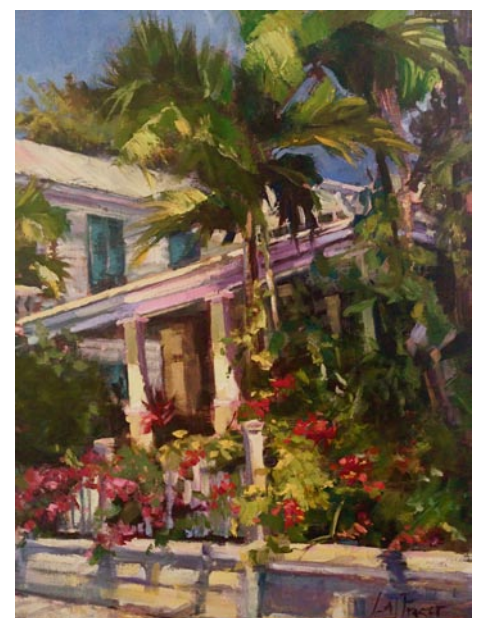
The Charleston Artist Guild in Charleston, SC, will present *Southern Light*, featuring recent works by Lynne Fraser, on view from June 1 - 30, 2015. A reception will be held on June 5, from 5-8pm.

Fraser's show is a collection of her most recent works inspired by local coastal scenes of Charleston, Sullivan's Island and Mt. Pleasant, her recently adopted home in South Carolina. She strives to paint her coastal infused visions, loosely, respecting every color laden brush stroke to transfer the creative energy onto the canvas.



Work by Lynne Fraser

As a native of Scotland, landscapes and scenery have always been Fraser's muse. She built her career creating 3D art, sculpting landscape designs for 25 years in Cincinnati, OH. Brushes and oil paints now replace her tracing paper and pencils and her love of outdoor painting now translates the scenery vividly onto canvas with a distinct impressionistic, 'a la prima'



Work by Lynne Fraser

painting style. Fraser's light-filled paintings chronicle her travels to Greece, Italy, Key West, FL, and now Charleston, SC.

For the past 6 years, Fraser's increasing fascination with the Lowcountry of South Carolina has resulted in sophisticated renderings of Shem Creek, Poe's Tavern, and Magnolia Plantation. Whether at home in her adopted coastal town of Mt. Pleasant, SC, the banks of the Ohio River in Cincinnati or traveling through Europe and the US, Fraser's adventurous spirit instantly connects with the local views rendering them on canvas with attention to color, light, and detail. Her paintings are in private collections in the US and Europe.

Sales made there support the non-profit Guild's Community Outreach work.

For more info check our SC Institutional Gallery listings, call 843/722-2454 or visit (www.charlestonartistguild.com).