

NC Commercial Galleries

continued from Page 54

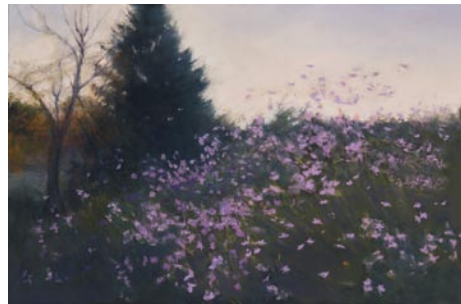
Bellagio, 5 Biltmore Plaza, Historic Biltmore Village, Asheville. **Ongoing** - Featuring exquisitely handcrafted jewelry and clothing. Hours: Mon.-Sat., 10am-6pm & Sun., noon-5pm. Contact: 828/277-8100 or at (www.bellagioarttowear.com).

Bella Vista Art Gallery, 14 Lodge St., Historic Biltmore Village, Asheville. **Ongoing** - Featuring works by regional and national artists in a variety of mediums. Offering contemporary oil paintings, blown glass, pottery, black & white photography, stoneware sculptures, and jewelry. Hours: Mon.-Sat., 10am-6pm & Sun., 10am-4pm. Contact: 828/768-0246 or at (www.BellaVistaArt.com).

Bender Gallery, 29 Biltmore Avenue., Asheville. **Ongoing** - The region's largest and most diverse studio glass gallery on two sun-filled levels features artists from around the country as well as around the world. Hours: Mon.-Sat., 10:30am-5pm & Sun., noon-5pm. Contact: 828/505-8341 or at (www.bendergallery.com).

BlackBird Frame & Art, 365 Merrimon Avenue, just 3/4 mile north of downtown, Asheville. **Ongoing** - Currently, about 25 painters, photographers and crafters show their work at BlackBird. We also offer expert custom framing. Hours: Mon.-Fri., 10am-6pm & Sat., 10am-3pm. Contact: 828/252-6036 or at (www.BlackBirdFrame.com).

Blue Ridge Frame & Gallery, 545 Merrimon Ave., Asheville. **Ongoing** - Featuring works by local artist Linda Cheek, Ann Vasilik, Carol Bomer, Kelly Wilkinson, and many more. Plus a large selection of prints, posters, and quality custom framing. Hours: Mon.-Fri., 9:30am-6pm & Sat., 10am-4pm. Contact: 828/253-3559.



Work by Deborah Squier

Blue Spiral 1, 38 Biltmore Ave., Asheville. **Main Gallery, Through June 25** - "Celebrating 30!" In celebration of the Blue Spiral 1's 30th Anniversary, we are tipping our hats to the many artists who have made the gallery one of the nation's most exciting venues for contemporary fine art and studio craft. Forfeiting our usual exhibition schedule and artist invitationals, our gallery family will be on full display on all three levels from January through June! These artists - whether painters, sculptors, glass blowers, ceramicists, weavers or photographers - define the heart of the gallery and its mission to celebrate the arts. The gallery will be rotating works out regularly, creating new vignettes and pairings allowing the opportunity to discover something new with each visit. In honor of founder John Cram (1948-2020), we will be placing extra focus on our past, our present, and our exciting future. As part of our celebration programming, we invite you to visit the gallery and our website to learn more about the amazing impact John had on our local arts community and beyond. **Showcase Gallery, Through June 25** - "Isolating Mass: Zack Noble and Frank Hursh". Sculptor, Zack Noble, joins Black Mountain College painter, Frank Hursh, in an exhibition exploring the emotive, nuanced interplay between line and shape. Noble works with forged iron to manipulate and essentially isolate the metal into expressive, often playful, design. His monumental sculptures reference architecture, highway systems and industrial landscapes and invite viewers to explore from all angles. While Hursh's works are often colorful and expansive, they too are characterized by consolidated gestural marks and monumental forms that are rhythmically subdivided by expressive line. He relies on shadow and depth to create cosmic landscapes that seem to expand infinitely. **Small Format Gallery, Through June 25** - "Bearing Witness". Painter Deborah Squier presents a new body of work focusing on landscape as a spiritual connection between the body and the earth. Each painting symbolizes a gesture of gratitude for what she refers to as nature's life giving force. **Conference Gallery, Through June 25** - "Judith Duff: International Wood Fire Artist, Peer, Mentor". The exhibit features works by: Judith Duff, Jamey Biggs, Josh Copus, John Dix, Stephen Driver, Nancy Green, Dian Magie, Shozo Michikawa, Ron Myers, Akira Satake, Jason Serres, and Joy Tanner. This special tribute exhibition honors the impact of Judith Duff's 25+ year career in woodfired pottery, and the influence she had on the field, her peers, and her mentees. **Old Showcase Gallery,**

Through June 25 - "Finding Nature". Clay artists Deighton Abrams, Alice Ballard, Nina Kawar, Elaine Quave, Michael Vatalaro, Megan Wolfe, and Valerie Zimany present works which visually describe the way meaningful interactions with nature can make us feel whole. This exhibition was organized by Elaine Quave. **Ongoing** - Featuring works in a variety of mediums by regional, national and international artists. Hours: Sun.-Tue., 11am-5pm & Wed.-Sat., 11am-6pm. Contact: 828/251-0202 or at (www.bluespiral1.com).

Castell Photography, 2C Wilson Alley off Eagle St., Asheville. **Ongoing** - The gallery is owned by internationally recognized artist Brie Castell, is a unique photographic Salon & Gallery dedicated solely to photo based media. The gallery features the work of Brie Castell, and also hosts several rotating exhibitions each year of other talented photographers. Hours: Wed.-Fri., noon-6pm, Sat., noon-7pm or by appt. Contact: 828.255.1188 or at (www.castell-photography.com).

Chatsworth Art and Antiques, 54 N. Lexington Ave., Asheville. **Ongoing** - Specializing in 19th and early 20th century oils, watercolors and prints. Also jewelry, silver, china, small furniture and fine accessories. Hours: Tue.-Sat., 11am-5pm. Contact: 828.252.6004.

Clayspace Co-op, River Arts District, 119A Roberts St., Asheville. **Ongoing** - The Clay-space Co-op is a cooperative ceramics studio and showroom located in the historic river arts district of Asheville, North Carolina. The main aim of the Clayspace Cooperative is to provide an environment that promotes the artistic growth and success of its members through cooperation and education. Hours: hours by chance. Contact: 828/279-3811.

Cold River Gallery, 32-A Biltmore Ave., Asheville. **Ongoing** - Welcome to the artistic expression of messages found in ancient wisdom, philosophies and our Earth's gifts, presented as the fine art of Karen Pierre. Working studio, jewelry, pottery. Hours: Tue.-Sat., noon-5pm. Contact: 828/350-0955.

Corey C. McNabb Studio, River Arts District, 1 Roberts Street, Suite 201, above White Duck Taco Shop, Asheville. **Ongoing** - An Asheville native, McNabb paints only with a palette knife, applying oils or acrylics to canvas, creating bold bright images with an impressionistic impasto style. Hours: Thur.-Tue., 11am-5pm. Contact: at (www.mcnabbfineart.com).

CURVE studios & garden, 6, 9 & 12 Riverside Dr., River Arts District, Asheville. **Ongoing** - Working studios of Constance Williams, Sutherland Handweaving, Pattii Torno, Maria Troya, Kyle Carpenter, Akira Satake, Cynthia Wynn, Fran Welch, Jenny Mastin, Cassie Ryalls & more. Hours: 11am-4pm daily. Contact: 828/388-3526 or at (www.CURVEstudiosNC.com).

Desert Moon Designs Studios & Gallery, 372 Depot Street, Suite 44, River Arts District, Asheville. **Ongoing** - The gallery is a progressive contemporary gallery that includes working studios. The focus of the gallery is to showcase both emerging/established local and visiting regional artists. Several times a year special exhibitions are scheduled to introduce new talent or to bring focus to a certain art medium. Hours: Mon.-Sat., 11am-5pm. Contact: 828/575-2227 or at (<http://www.desertmoondesigns-studios.com>).

FW Gallery at Woolworth Walk, 25 Haywood St., Asheville. **Ongoing** - Woolworth Walk is a uniquely Asheville experience; a privately and locally owned gallery in the heart of downtown, located in a historic building and representing local artists exclusively, it is without a doubt "Worth the Walk". Hours: Mon.-Thur., 11am-6pm; Fri., 11am-7pm; Sat., 10am-7pm; & Sun., 11am-5pm. Contact: 828/254-9234 or at (www.woolworthwalk.com).

Foundation Studios, 27 Foundy Street, Suite 10, Asheville. **June 12 - July 4** - "Sand Hill Artists Collective (SHAC) Celebrates Year One," featuring two exhibitions including: special works from over 30 featured artists and works by Biltmore Lake Artists. The exhibit opens to the public at 7pm. In Western Buncombe, SHAC has become a virtual gallery in neighborhoods where there are many artists but few galleries. In its first year, SHAC has featured over thirty artists on their blog which also includes news and commentary and has brought a regional and national audience of arts lovers to WNC's top galleries through their Virtual Gallery Tours. Artists hail from 28715, 28716, 28728, 28806 and 28810. Artists from

those zip codes are invited to apply to be a Featured Artist at (www.sandhillartists.com). **Ongoing** - Foundation Studios is a Community Art Center curated by Modern Wave Art Gallery in Asheville's River Arts District! Host to Reid Dawson Metal Art, 20 artists' studios, two galleries, classes and workshops, the Foundation Studios is a unique stop for your next adventure! Enjoy artwork throughout different mediums, monthly gallery shows, events, live demonstrations and much more. Hours: daily noon-5pm or by appt. Contact: 828/505-1214 or at (<https://www.riverartsdistrict.com/artist/foundation-studios/>).

Gallery Minerva Fine Art, 8 Biltmore Ave., Asheville. **Ongoing** - Featuring painting, sculpture, photography, ceramics and glass by local and regional artists. Hours: Mon.-Thur., 11am-6pm; Fri. & Sat., 11am-8pm; & Sun., noon-5pm. Contact: 828/255-8850 or at (www.galleryminerva.com).



Works by Judy Brater

Gallery of the Mountains, Inside The Omni Grove Park Inn, 290 Macon Ave., Asheville. **Ongoing** - Showcasing American handmade crafts by more than 100 artists and craftspeople from the Southern Appalachian region. Wed.-Sun., 10am-5pm. Contact: 828/254-2068.



Work by Dale Rogers

Grovedwood Gallery, adjacent to The Omni Grove Park Inn, 111 Grovedwood Road, Asheville. **Ongoing** - Established in 1992, Grovedwood Gallery is nationally recognized for its dedication to fine American-made art and craft. Located in historic Grovedwood Village, this site once housed the weaving and woodworking operations of Biltmore Industries, an Arts and Crafts enterprise that played a significant role in the Appalachian Craft Revival during the early 20th century. Today, Grovedwood Gallery offers two expansive floors of finely crafted furniture, ceramics, jewelry and more, contributed by over 400 artists and craftspeople from across the United States. Hours: Mon. - Sat., 10am-5:30pm & Sun. 11am to 5pm. Contact: 828/253-7651 or at (www.grovedwood.com).

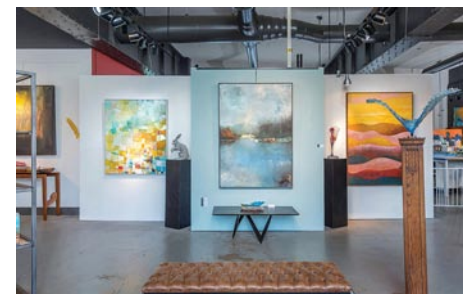
Ignite Jewelry Studios, second story of Riverview Station, 191 Lyman St, #262, Asheville. **Ongoing** - Ignite Jewelry Studios, a project co-founded by local jewelers Jessica Hall, owner of Bluebird Designs, and Nora McMullen, owner of Nora Julia. Ignite Jewelry Studios has a fully-stocked shared space for experienced jewelers to use the equipment, create together and grow their skills. Weekly jewelry workshops are taught covering a variety of jewelry techniques for all skill levels. Gallery Hours: Tue.-Sat., 11-4pm. Contact: 828/552-4805 or at (www.ignitejewelrystudios.com).

Jewels That Dance: Jewelry Design, 63 Haywood St., next door to the Library, Asheville. **Ongoing** - Featuring hand-crafted jewelry by some of America's foremost jewelry artists. Hours: Mon.-Sat., 10:30am-6pm. Contact: 828/254-5088 or at (www.jewelsthatdance.com).

Jonas Gerard Fine Art, 240 Clingman Ave., Asheville. **Ongoing** - Featuring works by nationally known artist Jonas Gerard (1941-2020). The 5,000 square feet studio / gallery is filled with years of passion and dedication. He used bold, passionate, sweeping gestures of saturated color that form unexpected images of poetic stature. Hours: Mon.-Sun., 10am-6pm & by appt. Contact: 828/350-7711 or at (www.jonasgerard.com).

K2 Studio, 59 College Street, inside The Kress Building, Asheville. **Ongoing** - Featuring a unique collection of fine furniture by local artists and pieces from around the world, home accessories and changing fine art exhibitions. Hours: Mon.-Thur., 11am-6pm; Fri. & Sat., 11am-7pm; and Sun., noon-5pm. Contact: 828/250-0500 or at (www.k2furniture.com).

Kress Emporium, 19 Patton Ave., Patton & Lexington Aves., downtown Asheville. **Ongoing** - Featuring works by over 100 artists and craftsmen. Hours: Mon.-Sat., 11am-6pm & Sun., noon-6pm. Contact: 828/281-2252 or at (www.thekressemporium.com).



View inside Mark Bettis Studio & Gallery

Mark Bettis Studio & Gallery, 123 Roberts Street, in the Wedge Building, Asheville. **Ongoing** - Featuring works by Mark Bettis Hours: Mon.-Thur., 10am-4pm & Fri.-Sat., 10am-5pm. Contact: Mark Bettis at 941/587-9502 or e-mail to (markbettis@gmail.com).

Momentum Gallery, 24 N. Lexington Ave., Asheville. **Ongoing** - located in downtown Asheville, offers a contemporary and modern program with an emphasis on emerging and mid-career artists. Occupying approximately 4000 square feet in an easily accessible, street-level space, the gallery's mission is to provide compelling, museum-quality art to our clients. Curated exhibitions featuring exceptional paintings, original prints, and innovative sculpture refresh regularly in the main spaces and smaller adjoining galleries. Momentum Gallery also participates in major art fairs exhibiting work by represented artists. Hours: Mon.-Sat., 10am-6pm & Sun. noon-5pm. Contact: 828/505-8550 or at (momentumgallery.com).

Montford Arts Center, 235 Montford Avenue, Asheville. **Ongoing** - Featuring works in a variety of media by over twenty-five area artists. Watch artists at work. Hours: Tue.-Fri., 11:30am-6pm & Sat., 11:30am-5pm. Contact: 828/777-1014.

Mountain Made, Grove Arcade Public Market, 1 Page Ave., Suite 123, Asheville. **Ongoing** - Featuring the work of over a 150 WNC artisans, in both contemporary and traditional mountain handcrafts. This one-of-a-kind, gallery and gift shop caters to those shoppers who wish to take a "piece of the mountains" home with them. Hours: Mon.-Sat., 10am-6pm & Sun., noon-5pm. Contact: 828/350-0307 or at (www.mtnmade.com).

Mudhunter Pottery, 66 Broadway St., Asheville. **Ongoing** - Featuring a rustic gallery shop showcasing functional and sculptural work from over 20 local potters. Our artists' diverse styles ad affordable prices set them apart. Hours: Tue.-Thur., 11am-5:30pm & Fri. & Sat., 11am-6pm. Contact: 828/225-5869.

New Morning Gallery, 7 Boston Way, Historic Biltmore Village, Asheville. **Ongoing** - Featuring fine art and crafts by some of America's finest artists. Hours: Mon.-Sat., 10am-7pm & Sun., noon-5pm. Contact: 828/274-2831 or at (www.newmorninggallerync.com).

Overström Studio, 35 Wall St., Asheville. **Ongoing** - This architecturally significant gallery exclusively represents work by internationally-recognized designer Michael Overström, who with his wife Susan, present their original, handcrafted jewelry designs that embrace the designer's Scandinavian heritage and define Asheville's elegant style. Hours: Tue.-Sat., 10am-8pm. Contact: 828/258-1761 or at (www.overstrom.com).

Pura Vida, 39-B Biltmore Ave., Asheville. **Ongoing** - Featuring a space for the senses, offering the finest in artwork appealing to all five senses. Hours: daily noon-10pm. Contact: 828/271-6997 or at (www.pura-vida-asheville.com).

16 Patton Fine Art Gallery, 16 Patton Avenue, Asheville. **Ongoing** - Featuring works by William McCullough, Deborah Squier, John MacKah, Greg Osterhaus, Jerry La Point, Richard Oversmith, Scott Lowery, Dawn Rentz, Laura Young, Margaret Dyer, Suzy Schultz and Stuart Roper. Studio glass by Herman Leonhardt. Hours: Mon.-Sat., 10am-6pm. Contact: 828/236-2889.

continued on Page 56