

# Lowcountry Artists Gallery in Charleston, SC, Features Works by Tina Mayland

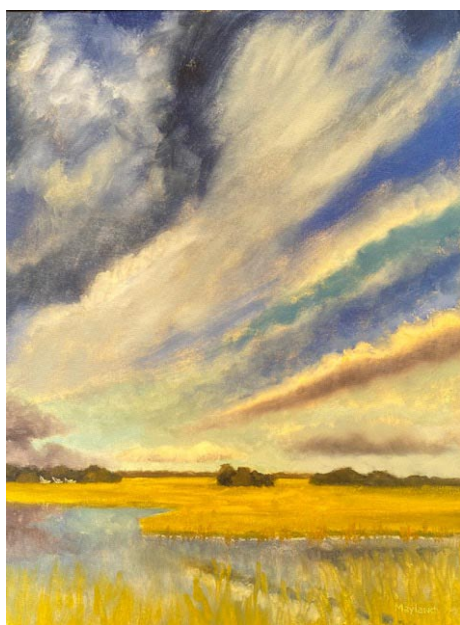
Lowcountry Artists Gallery in Charleston, SC, will present *Lowcountry Lights* featuring new works in oil by Charleston artist, Tina Mayland, on view from June 1 - 30, 2022. A reception will be held on June 3 from 5-8pm.

Mayland is a native Charlestonian for whom the Lowcountry of South Carolina is as close to paradise as any place on earth. Returning home after 30 years of a high-tech career that took her to Atlanta, DC, and New Jersey as VP of Marketing for AT&T, Tina “rewired” from her all-consuming corporate life and began her “encore career” as a full-time artist.

Mayland’s motivation to become a painter comes from visits to her grandparent’s farm on Wadmalaw Island, just outside of Charleston. “As a child, I built tree forts in live oak trees, played in the pluff mud of the marshes, and galloped my horse through Lowcountry forests. Capturing the essence of that landscape in my art is a way of recapturing the joys of my youth.”

She continues, “In my art, I strive to capture a moment in time... an experience that moved me. Often, it’s how the light played on the landscape and my feeling of wonder in that instant. My heart belongs to the South Carolina Lowcountry. I relish its languid summer days, its moss-covered oak trees that glow orange in the receding light, sunsets too uproarious to be believed, and the vastness of marshes punctuated by the distinctive odor of pluff mud (which to some is unpleasant, but to me is sacred, because it smells like home).”

Mayland endeavors to celebrate the magnificence of nature and her joy living in awe of it. Using thick paint and bold strokes, her goal is to capture the sympathy that is the Lowcountry... its unique light, mood, and texture.



Work by Tina Mayland

Mayland served on the Board of Directors of the Charleston Artist Guild for 4 years and is a member of the Seabrook Island Artist Guild. She’s also active in the community, serving on the Board of Trustees of the Middleton Place Foundation and on the National Board of Directors of the Archeological Institute of America. Her work is represented by the Wells Gallery at The Sanctuary on Kiawah Island and by Lowcountry Artists Gallery in downtown Charleston. A recovering workaholic, she is reveling in her “rewired” life. Says Mayland, “I’m testament to the fact that you-can-go-home-again and that the post-career stage can be the most fulfilling!”

For further information check our SC Commercial Gallery listings, call the gallery at 843/577-9295 or on the web at ([lowcountryartists.com](http://lowcountryartists.com)).

# Perspective Gallery in Mt Pleasant, SC, Features Works by Amelia Rose Smith

The Perspective Gallery in Mt. Pleasant, SC, features Amelia Rose Smith as the June artist of the month. The gallery will host a reception June 16, from 4-6pm.

Amelia Rose Smith employs light, value and color to give the viewer an understanding of Charleston’s people and places. She says, “I seek to capture Carolina’s lofty, majestic skies and ever-changing marshes.”

In addition to paintings with local themes, she has portrayed scenes in the American west, the coast of Mexico and Monhegan Island in the upper northeast.



Work by Amelia Rose Smith

For further information check our SC Commercial gallery listings, call the gallery at 843/800-5025 or on the web at ([mpagperspectivegallery.com](http://mpagperspectivegallery.com)).

# Lake Marion Artisans Gallery in Summerton, SC, Features Works by Janet Michalic

The Lake Marion Artisans Gallery in Summerton, SC, is presenting *Creating Art During Covid*, featuring an exhibit of works by local artist Janet Michalic, on view through July 30, 2022. The exhibition depicts scenes and images in a quiet gentle manner. “Silence in a pure state” according to Michalic

Michalic studied art at the Clarion University in Pennsylvania and later taught art in grades one thru eight. She then married and took a recess from her art endeavors. After raising a family she reached back to her creative nature and artistic interests. She approached art now from a personal platform rather than that of an instructor. She continued to hone and develop the skills she had learned in college; advancing them through practice and experimentation; making contacts and friends with other artists in her area to garner their advice and critiques, growing in the process.

The COVID Pandemic put many artists on hold for the past 2 years, either financially or emotionally. Michalic took



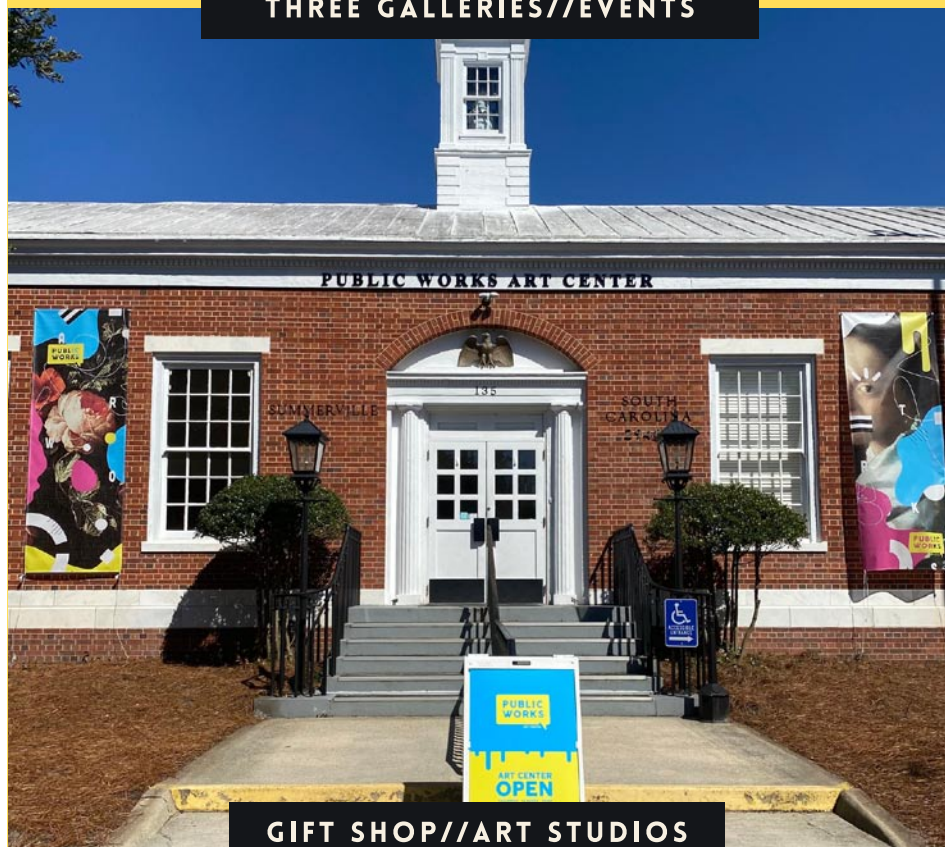
Work by Janet Michalic

advantage of this quiet personal time to dive into her art in an uninterrupted fashion producing a strong body of new paintings. Over the years she has worked with

*continued above on next column to the right*

# DOWNTOWN SUMMERVILLE'S ART CENTER

THREE GALLERIES//EVENTS



GIFT SHOP//ART STUDIOS

135 W. RICHARDSON AVE.,  
SUMMERVILLE, SC 29483  
843-900-3225  
[PUBLICWORKSARTCENTER.ORG](http://PUBLICWORKSARTCENTER.ORG)

many different mediums and on a variety of surfaces but “COVID” gave her time to concentrate more fully on the properties of Acrylics and Oils. In her works on display she has applied paint going from a heavy impasto as in “Sheep in the Pasture”; to a soft serene surface as in “Tea for One”; producing on both canvases a different, but equally amazing finished look. Michalic’s work is easy on the eye and

calming to the spirit; something any art audience will appreciate.

Lake Marion Artisans Gallery is located on Main Street in Summerton, SC. Admission is free. Gallery hours are currently operating under COVID concerns. Hours will be extended in the future.

For further information check our SC Institutional Gallery listing or visit ([lakemarionartisans.com](http://lakemarionartisans.com)).

# Public Works Art Center in Summerville, SC, Features Photographs by Kirsten Hoving in the West Gallery

Public Works Art Center in Summerville, SC, will feature *Fabricated Visions*, photographs on silk by Kirsten Hoving from June 16 - July 30, 2022. A reception will be held June 16 from 5:30-8:30pm.

*Fabricated Visions* is a collection of evocative photographs printed on silk and combined with secondary photographs or paper collage. In some works, the fabric is mounted only at the top over a digital underprint on a panel to create free-flowing photographs that gently move with air currents or in response to the movements of viewers. In others, the silk is stabilized on a transparent substrate that, in turn, is lifted over a secondary digital photograph or hand-made paper collage to create an unexpected three-dimensional effect.

Hoving’s combination of silk fabric with other photographs and materials creates mysterious images that allude to poems, myths, and transcendent experiences. Although her subjects are quietly commonplace – a ladder propped against an apple tree, a figure entering a doorway, a swimmer lifting an arm – she presents them in unusual ways that elevate them to poetic visions. Hoving’s materials and processes support the metaphors in her work, as silk, whether flowing or three-dimensional, provides the underpinning for imaginative musings and fabricated visions.

Kirsten Hoving is a photographer and interdisciplinary artist from Charleston, SC, whose art balances on the edge between fact and fiction. Over the last fifteen years, Hoving has shown her work in galleries around the world and has published several books, including *Svala's Saga*, a project done in collaboration with photographer Emma Powell. With a PhD in art history from Columbia University, Hoving had a long career as a professor and scholar of modern art, with books and articles on many topics, including Surrealist photography and the assemblages of Joseph Cornell. Those interests heavily influence her creative practice.

Hoving frequently combines photographs with unusual processes, materials, and presentations to evoke quiet dreams, myths, and half-remembered tales. Using unexpected viewpoints, three-dimensionality, and kinetic elements, she expands photography’s decisive moments into visionary states of mystical wonder. Our imagination, she believes, is what makes us human, and our ability to see the world through metaphors, stories, and poetic allusions connects our minds to our hearts.

For further information check our SC Institutional Gallery listings, call the gallery at 843/900-3225 or on the web at ([publicworksartcenter.org](http://publicworksartcenter.org)).