

SC Institutional Galleries

continued from Page 37

to whimsical worlds, inviting others to join him in seeing in new ways. These are worlds that Jim Gleason creates as easily as he breathes. As a Marine veteran and professional musician, Gleason became a master technician repairing brass and woodwind instruments. Now, after decades of experience, he is intimately aware of every particle that makes up an instrument allowing it to give voice to notes on a page. When they can no longer do so, despite his best efforts, he gives them new lives as fanciful creatures and characters that flow steadily from his imagination, populating his studio, putting a smile on your face as soon as you see them. **Ongoing** - The Steven F. Gately Gallery is a visual arts gallery located on the first floor of Francis Marion University's charmingly renovated University Place building on N. Dargan Street, Florence, SC. The gallery hosts rotating exhibitions from a variety of artists. Named for the late Steven F. Gately, a long time art professor at Francis Marion University. The Gately Gallery is an extension of Francis Marion University. The gallery's mission is to provide the community with a venue to experience a wide range of culturally diverse regional, national, and international visual artwork from emerging and established artists. Hours: Tue.-Wed., noon-6pm; Thur.-Fri., 10am-6pm & 2nd and 4th Sat., 10am-3pm. Contact: 843/661-4637, 843/661-4638 or at (<https://www.fmarion.edu/universityplace/>).

ALTERNATE ART SPACES - Florence
Doctors Bruce and Lee Foundation Library, 506 South Dargan Street, 2nd floor of the library, Florence. **Dr. N. Lee Morris Gallery, June 6 - Sept. 30** - "Behind the Clay: A Visual Exploration of the Creative Process by Tiffany Thomas." A reception will be held on June 6, from 5:30-6:30pm. Thomas is a multifaceted artist specializing in ceramics and painting, driven by a fascination for the inherent beauty in everyday objects and experiences. After graduating with a degree in Ceramics and Painting from Francis Marion University in 2012, Thomas has built a strong foundation for her artistic practice. In 2018, Thomas' dedication to her craft culminated in a successful wholesale order through Geocentral. As a testament to her skill and passion, she was invited to speak at the National Council on Education for the Ceramic Arts in 2022, sharing her knowledge and insights with fellow artists and enthusiasts. Thomas mostly promotes her work online and sells all over the world. **Ongoing** - Featuring paintings from the Mulholland-Attanasio Permanent Collection. Hours: Mon.-Thur., 9am-6:45pm; Fri., 9am-5:15pm; & Sat., 9am-12:45pm. Contact: 843/413-7060 or at (www.florenceclibrary.org).

Fort Mill

LOOM, Coworking Gallery and Event Space, 118 & 120 Academy Street, Fort Mill. **Ongoing** - LOOM is a multi-functional facility in the heart of historic downtown Fort Mill that provides: Collaborative coworking spaces for at-home, mobile and remote workers; Learning and networking opportunities for the greater community; and a variety of meeting and special event spaces to benefit your business or group. Gallery hours: Mon.-Fri., 9am-4pm. Contact: 803/548-5666 or at (<http://loomcoworking.com>).

Gaffney

Cherokee Alliance of Visual Artists Gallery, 210 West Frederick Street, located in the former Old Post Office building one street over from the Main Street with the City of Gaffney Visitors Center, Gaffney. **Ongoing** - Featuring works in a variety of media by Cherokee County artists. Hours: Mon.-Thur., from 8:30am-5pm and Fri., from 8:30am-3:45pm. Contact: call Shelba Cook at 864/490-0609 or call the Visitors Center at 864/487-6244.

Georgetown

Prevost Gallery, Rice Museum, 633 Frint Street, Georgetown. **June 15 - Aug. 3** - "Georgetown County Watercolor Society Annual Show". A reception will be held on June 15, from 1-3pm. Hours: Tue.-Sat., 11am-4pm. Contact: 843/546-7423 or at (www.ricemuseum.org).

Greenville

Throughout Greenville. Ongoing - "Public Art in Greenville". The City of Greenville's long-standing support for public art is a testament to our belief that the arts enhance the quality of life for residents and visitors, and strengthen our community - socially, economically, and culturally. The City's permanent collection includes more than 120 works of public art (including sculptures, statues, murals, architectural elements/structures, historic pieces, etc.).

Ongoing efforts to enhance the built environment through public art and creative placemaking contribute to the area's unique aesthetic identity, and create platforms for community engagement and dialogue. For more info visit (<https://storymaps.arcgis.com/collections/4a3096011985490b971d3f778466c9b4>).

Downtown Greenville - "First Fridays," featuring a gallery crawl presented on the first Fri, of the month from 6-9pm. Visit galleries throughout the downtown area. For info: (www.fristfridaysonline.com).



Work by Will Crooks

Greenville Center for Creative Arts, 25 Draper Street, Greenville. **Main Gallery, June 7 - July 24** - "Silent Surfaces: Mapping Spatial & Personal Discoveries." A reception will be held on June 7, from 6-9pm. This is a three-person exhibition featuring the artwork of Donnie Copeland (Arkansas), Ryan Lewis (Michigan), & Matthew McLaughlin (Maryland)—each offering distinct avenues of exploration into introspection, spatial cognition, and nuanced patterns of existence. **Community Gallery, Through June 26** - "Mental Health Moonshot." Presented by the Greenville Center for Creative Arts (GCCA) in partnership with Walt's Waltz, a non-profit mental health awareness organization. "Mental Health Moonshot" is a group exhibition that beckons us to embark on a monumental journey aimed at unraveling the complexities of mental health and dismantling the barriers of stigma. Through paintings, photography, drawings, and mixed media, the exhibition delves into the triumphs and tribulations of individuals grappling with mental health conditions. Walt's Waltz in partnership with GCCA is committed to erasing stigmas and reducing suffering as they work as a catalyst for change. With a dual-fold theme of hope and resilience, the exhibition becomes a beacon of hope piercing the darkness of mental health struggles. The featured artists are: Traci Wright Martin, Will Crooks, Kara Bender, Aldo Muzzarelli, Amanda Barbarito, Elisa Golden, Connie Lippert, Terrell Washington, Sherrill Hill, Barbara Castenada, Samantha Goss, Tania Ro, and local poet and psychiatrist Frank Clark, whose poetry is paired with artist Lisa Teo's work couriered to GCCA from Malaysia. **The Shop at GCCA** - In celebration of our eighth anniversary, Greenville Center for Creative Arts is thrilled to announce the opening of our official gift shop! As another opportunity for GCCA to support local artists, visitors can shop for consigned artworks from Greenville-based artists including prints, small originals, jewelry, pottery, and more! The Shop at GCCA will also have novelty merchandise for sale so you can show your love for Greenville arts everywhere you go! **Ongoing** - Home to 16 studio artists. Hours: Wed.-Fri., 1-5pm. Contact: call 864/735-3948 or at (www.artcentergreenville.org).



Benny Andrews (1930-2006), "The Arrival", 1960, oil and collage on canvas, H. 51-1/4" x W. 93-3/4", On view now in "Collection Highlights: African-American Art".

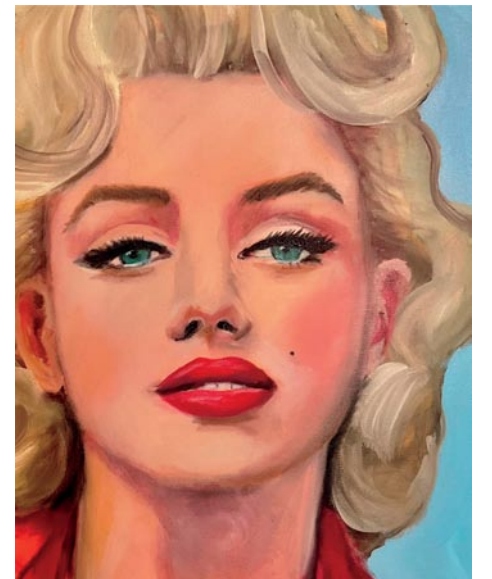
Greenville County Museum of Art, 420 College Street, Greenville. **Through July 28** - "This Is Not: Aldwyth in Retrospect". A Gallery Tour with guest curator Mark Sloan will be offered on May 19, at 2pm. Organized by guest curator Mark Sloan, this retrospective spans nearly seventy years of Aldwyth's work, beginning with photography and continuing through experimental painting, assemblage, and collage. The exhibition considers a number of personal themes that have remained

consistent throughout her career. Now in her late 80s, the artist, who uses the singular name Aldwyth, has lived and worked alone in an octagonal house overlooking a salt marsh on one of South Carolina's sea islands since 1980. While maintaining her seclusion from the larger art world, she has employed the history of art and ideas as a catalyst for complex found-object sculptures and increasingly epic-scaled collages that often recall medieval manuscripts writ large. **Through June 16** - "Kevin McNamee-Tweed: Saying the Sun". "One can only gather if indeed [one is] looking. I am obsessively, hungrily looking. . .". Born in Stanford, CA, in 1984, Kevin McNamee-Tweed grew up in North Carolina. He graduated from New York University with a BFA in 2008 and earned an MFA from the University of Iowa in 2017. In addition to working as a studio artist in various media, he served as Chief Curator of Big Medium Gallery, Austin, TX. The exhibition Saying the Sun features wall-hanging ceramics that characteristically embrace McNamee-Tweed's simultaneous high- and lowbrow intentions, allowing the viewer to simply see and feel. As the artist has said, "At the point when beauty and humor emerge, we feel relief. I think, that our logic and computations are, at last, not necessary." **Through Sept. 8** - "Horace Day in the Lowcountry." A plein air realist, Horace Day helped to extend the Charleston Renaissance into the post-World War II era by modernizing the genre, combining the punch of brilliant colors and textured brushstrokes with the same love of place expressed by Alfre Hutty, Alice Ravenel Huger Smith, Anna Heyward Taylor, and Elizabeth O'Neill Verner. His fresh interpretations of Carolina Lowcountry subjects documented vibrant city streets and their inhabitants, bucolic landscapes, rural cabins hidden beneath massive oaks, and churches still identifiable today by their distinctive architectural details. This exhibition will focus on the artist's work that was painted over four decades of traveling along the coast - from Charleston to Hilton Head Island. **Ongoing** - "Art and Artists of South Carolina: For Real". The GCMA's newest exhibition is drawn from the Museum's permanent collection. Celebrate the Palmetto State with a diverse selection of watercolors by Mary Whyte and Stephen Scott Young, sculptures carved by Grainger McKoy, and varied South Carolina landscapes. **Ongoing** - "Collection Highlights: African-American Art," features 17 works by as many artists. At the forefront of the exhibition is a realistic sculpture by John Wilson, whose monumental bronze head of Martin Luther King, Jr. captures the dignity and strength of the civil rights leader. Post-World War II non-objective painting is reflected in works by Beauford Delaney, Hale Woodruff, and Frank Wimberley. A lighter, but no less powerful, touch is embodied in a brilliant Color Field painting by Thomas Sills. The exhibition also includes evocative examples by Romare Bearden, Frederick Brown, Jacob Lawrence, Betye Saar, Merton Simpson, and Bob Thompson. **Ongoing** - "Andrew Wyeth: Running with the Land". This stunning retrospective showcases 59 works on paper, capturing Wyeth's preference for painting intimate subjects that were tied to the homes established by his father in both Chadds Ford, Pennsylvania, and Cushing, Maine. Wyeth drew inspiration from the distinctive characteristics and denizens of these locations, revealing universal traits in his depictions of landscapes, objects, and people. **Ongoing** - "All in the Family (Connections)," which assembles work by three generations of Wyeths--the first family of American painting--taking advantage of several rarely exhibited loans from a private collection and complementing the exhibition "Andrew Wyeth: Running with the Land". Admission: Free. Hours: Wed.-Sat., 10am-6pm and Sun., 1-5pm. Contact: 864/271-7570 or at (www.gcma.org).

Lipscomb Gallery, at South Carolina Governor's School for the Arts and Humanities, 15 University St., Greenville. **Ongoing** - We feature several exhibitions throughout each year - our own students and faculty, plus many guest artists. Hours: Mon.-Fri., 10am-4:30pm. Visitors are asked to sign in at the Administration Building's front desk before entering campus. Contact: 864/282-3777 or 864/282-3705.

Metropolitan Arts Council Gallery, 16 Augusta Street, Greenville. **Through June 7** - "Open Studios Retrospective". Initiated in 2006, One-Stop Open Studios is the annual retrospective exhibit of artists who have participated in Open Studios since its inception in 2002. The show runs in conjunction with Artisphere, Greenville's premier arts festival, and it allows for greater exposure and awareness of Greenville-area visual artists and the Open Studios event in November. **June 15 - July 12** - "Flat Out Under Pressure," featuring artworks created in a 24 hour timeframe. **Ongoing** - Featuring works by Greenville area artists. Hours: Mon.-Fri., 9am-5pm. Contact: 864/467-3132, or at (www.greenvillearts.com).

Museum & Gallery, Bob Jones University, Wade Hampton Boulevard, Greenville. **Ongoing** - "Likely and Unlikely Pairings," featuring a fascinating juxtaposition of art and mundane objects revealing a variety of viewpoints. Through this special comparative display, the unique presentation serves as an engaging tool for all viewers interested in understanding the many facets of art, culture, and thought. **Ongoing** - Permanent exhibition of the finest collection of religious art in America, including works by Rubens, Botticelli, and Van Dyck. Offering visitors a 60-minute audio-guided tour of over 40 favored works for a modest fee. Hours: Tue.-Sun., 2-5pm. Contact: 864/242-5100, Ext. 1050 or at (www.bjumg.org).



Work by Emily Wilson

ALTERNATE ART SPACES - Greenville
Centre Stage Theatre Gallery, 501 River Street, Greenville. **Through June 16** - "POP ART," featuring Pop Culture Icons by Emily Wilson. "POP ART" is a series of portraits that pays homage to women who have left their mark on pop culture by embodying strength, grace, intelligence, and seductive allure. In her bold signature style, artist Emily Wilson celebrates the power and influence these iconic figures have had on society. **June 21 - Aug. 11** - "Wild One(S): Ilka Rasch". A reception will be held on June 28, from 6-8pm. **Ongoing** - Featuring works by visual art members of MAC. Exhibits are offered in collaboration with the Metropolitan Arts Council. Hours: Tue.-Thur., 2-5pm & 2 hr. prior to shows. Contact: MAC at 864/467-3132, at (www.greenvillearts.com/mac-featured-galleries/).

Greenwood

Landscaped areas in Uptown Greenwood, June 1 - 30, 2024 - "17th Anniversary Topiary Celebration," during the annual SC Festival of Flowers. When it comes to flowers, everyone loves the topiaries - from the majestic elephant to the dabbling ducks to the Safari Jeep. You will be astonished to see the variety of sculpture sizes, plants, colors and textures. In all, 49 unique "living" creations are uniquely set in landscaped areas in Uptown Greenwood. Each topiary has been adopted by an organization and is sponsored by a separate organization. Contact: (www.scfestivalofflowers.org).



One of the works at Greenwood's 2024 SC Festival of Flowers

Throughout Downtown Greenwood, June 6 - 9, 2024 - "57th SC Festival of Flowers!," presented by Wesley Commons. We kick off the 57th SC Festival of Flowers with highly entertaining and fun-filled events for all ages during our main weekend. We invite you to stroll among our larger than life, "living" topiary sculptures spread throughout the Uptown Greenwood square. Then come browse and shop our arts and crafts show, take in various performances, experience our Wine Walk, join in our 5K run/walk, engage in Kidfest and tour exquisite home gardens. And that is just the beginning. See it all here and join us! Contact: (www.scfestivalofflowers.org).

Arts Center of Greenwood, at the Federal Building, 120 Main Street, Greenwood. **Main Gallery, June 6 - Aug. 2** - "SC Festival of Flowers' Juried Art Show," is a sanctioned exhibition hosted annually by The Arts Center of Greenwood in concurrence with the award-winning festival. A reception and awards ceremony will be held on June 8, from 3-5pm. There is a total

continued on Page 39