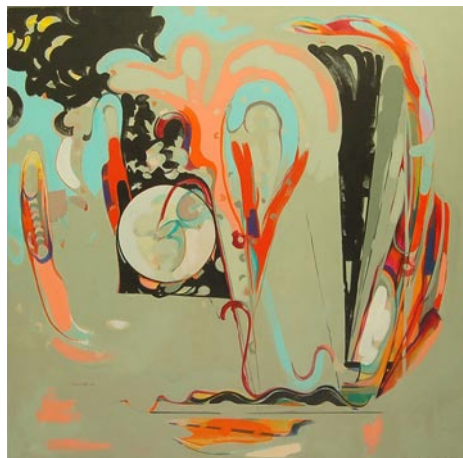


NC Institutional Galleries

continued from Page 51

Hepworth and Picasso. Only a handful of the artworks in the Bechtler collection have been on public view in the United States. Admission: Yes. Hours: Mon., Wed.-Sat., 10am-5pm; Sun. noon-5pm; and open until 9pm the 1st. and 3rd. Fri. of each month. Contact: 704/353-9200 or at (www.bechtler.org).

Bill and Patty Gorelick Gallery, at Central Piedmont Community College's Cato Campus, Cato III, 8120 Grier Road, Charlotte. **Through July 26** - "Fragments" featuring works by Tina Alberni. Alberni derives this series of work from impact of climate change and the harm created by aspects of technological development and progress. With a deep belief that all living things possess and intrinsic value and not simply human beings, Alberni challenges the viewer to consider topics such as how natural disasters, war and social disparity contribute to the endangerment and physical displacement of all living things. Alberni uses her new exhibition 'Fragments' to illustrate the narrative of fragmented lives and irreversible damage both visually and physically. In contrast to the hopeless narrative of destruction, Alberni seeks to use her artwork to create a positive, hopeful spirit for the future. Alberni assembles objects and layers in her work in a brightly colored, harmonious fashion, which invites the viewer in for a deeper contemplation of each composition. Alberni's work will be on display at Central Piedmont for 2024 and will be part of the Gorelick Gallery's traveling artwork series. Hours: open while campus is open, but reservations help us alert our security team to visitors, provide directions to the galleries, and COVID-19 security protocol instructions to the visitors. Contact: 704/330-6869 or e-mail to (foundation@cpcc.edu) to schedule an appointment. For directions to Central Piedmont's campuses, visit (cpcc.edu/locations).



Work by Marge Loudon Moody

Bill and Patty Gorelick Gallery, at Central Piedmont Community College's Central Campus, North Classroom, 1320 Sam Ryburn Walk, Charlotte. **Through July 26** - "Intangible Words," featuring works by Marge Loudon Moody. Moody is a Professor Emerita of Winthrop University in Rock Hill, SC where she taught for over 30 years. Widely exhibited both nationally and internationally Moody's work exists in private and public collections worldwide. "Intangible Words" broadly investigates environments inspired by Moody's travels and imaginations. Through the use of bright colors, abstract forms and continuous reworking of the composition, Moody creates the "essential" feeling of certain environments. Non-representational imagery utilizes the "essential" nature in order to illuminate the unseen or intangible spirit of the subject. "Subject matter may serve as metaphor for intangible ideas. The work examines boundaries, addresses the fragility of existence, of presence, of absence, and of memory," says Moody. Moody will also serve as this year's Juror for Central Piedmont's "2024 Annual Juried Student Art Show". Hours: open while campus is open, but reservations help us alert our security team to visitors, provide directions to the galleries, and COVID-19 security protocol instructions to the visitors. Contact: 704/330-6869 or e-mail to (foundation@cpcc.edu) to schedule an appointment. For directions to Central Piedmont's campuses, visit (cpcc.edu/locations).

Bill and Patty Gorelick Gallery, at Central Piedmont Community College's Harper Campus, Harper IV, 315 W. Hebron St., Charlotte. **Through Dec. 31** - "A Journey Through Life", featuring works by Jodi Lynn McNeely. This series has been several years in the making. As you inspect each piece of work, look for the 'path'. It represents our journey. We all are on our own journey, have our own story. As I talk to folks about their stories, I'm amazed at how similar our experiences can be. Our life events, whether the same or different can cultivate preparedness in each of us in much the same way. Note that each individual person carved

into my works of art is either touching the path or connected to someone who is. If they are extremely close, they share a hand or foot. Staying connected to someone is critical in this thing called life. As I travel through life, I am constantly reminded at how important being connected is. This is especially relevant during the rough times. Establishing strong relationships for me has been an essential part of my journey. I often carve the likeness of folks I know or have met on my journey into my work. Do you see yourself? I am constantly reminded of how important the people around me are. My life has been full of heart break, pure joy and everything in between. Sound familiar? I am determined to learn from the heart break, remember the pure joy and live everything in between to the fullest. Hours: open while campus is open, but reservations help us alert our security team to visitors, provide directions to the galleries, and COVID-19 security protocol instructions to the visitors. Contact: 704/330-6869 or e-mail to (foundation@cpcc.edu) to schedule an appointment. For directions to Central Piedmont's campuses, visit (cpcc.edu/locations).

Bill and Patty Gorelick Gallery, at Central Piedmont Community College's Harris Campus, Harris II, 3210 CPCC Harris Campus Drive, Charlotte. **Through Dec. 31** - "A Celebration of Art," featuring works by: Mario Loprete, Sheridan Hathaway and Andres Palacios. The Bill and Patty Gorelick Galleries will open a new exhibition at Harris Conference Center featuring the best of the College's permanent art collection alongside featured artists Mario Loprete, Sheridan Hathaway and Andres Palacios. Works from the College's collection exhibit a variety of works from former Central Piedmont students with a special highlight on Loprete, a mixed media artist, and ceramic artists Hathaway and Palacios. "A Celebration of Art" is certain to deliver a diverse selection of 2D and 3D artwork for the 2024 year. Hours: open while campus is open, but reservations help us alert our security team to visitors, provide directions to the galleries, and COVID-19 security protocol instructions to the visitors. Contact: 704/330-6869 or e-mail to (foundation@cpcc.edu) to schedule an appointment. For directions to Central Piedmont's campuses, visit (cpcc.edu/locations).

Bill and Patty Gorelick Gallery, at Central Piedmont Community College's Levine Campus, Levine II, 2800 Campus Ridge Road, Matthews. **Through July 26** - "Archival Photos Reimagined," featuring works by Central Piedmont Students and Staff. In a joint effort between the Central Piedmont Archives and Art Galleries, students and staff came together to recreate photographs from the Central Piedmont Archives. Using the photographs as inspiration, each participant artistically reimagined a selected photograph using any media of their choice. The Gorelick Galleries will exhibit this collection of works on Cato, Levine and Central Campuses as part of a traveling exhibition series. With an emphasis on College history and student engagement the exhibition celebrates the some of the best moments in the College's history and in turn shines the spotlight back on students. Hours: open while campus is open, but reservations help us alert our security team to visitors, provide directions to the galleries, and COVID-19 security protocol instructions to the visitors. Contact: 704/330-6869 or e-mail to (foundation@cpcc.edu) to schedule an appointment. For directions to Central Piedmont's campuses, visit (cpcc.edu/locations).

Bliss Gallery, established by Holy Angels, 25 N. Main Street, Belmont. **Ongoing** - Holy Angels established Bliss Gallery to offer persons who are differently able the opportunity to share creative abilities and showcase their art alongside the works of guest artists during special exhibitions. Hours: Wed.-Sat., noon-4pm. Contact: Harmony Heslop at 704/280-9475, e-mail at (blissgallery@holyangelsnc.org) or visit (www.holyangelsnc.org).

Charlotte Art League Gallery & Studios, 4237 Raleigh Street, Charlotte. **Ongoing** - CAL houses one of the area's largest collections of local professional and emerging artists, offering affordable fine art in a variety of styles and media: acrylics, oil, pastel, watercolor, mixed media, photography and sculpture, and fiber art. Tour studios of working artists. Admission: Free. Hours: Fri. & Sat., 1-7pm and Sun., 1-5pm. Contact: 704/376-2787 or at (www.charlotteartleague.org).

Cornelius Arts Center Gallery, 19725 Oak Street, Cornelius. **Ongoing** - The Arts Center Gallery is under the direction of the future Cain Center for the Arts. Hours: Mon.-Fri., 10am-4pm. Contact: 704/896-8823, 980/689-3101 or

visit (<https://cainarts.org/>).



Qualeasha Wood, "come outside, (we finna jump u)", detail, 2024, woven jacquard and glass seed beads, 80 x 58.62 inches, Courtesy of the artist.

Harvey B. Gantt Center for African-American Arts & Culture, Levine Center for the Arts, 551 S. Tryon St., Charlotte. **Extended through Aug. 25** - "A Superlative Palette: Contemporary Black Women Artists". Curated by Dexter Wimberly, "A Superlative Palette" brings together the work of twelve generation-defining, contemporary Black women artists from around the world. In the realm of contemporary art, the contributions of Black women artists have been transformative, challenging traditional narratives, and enriching the cultural landscape. Their powerful and thought-provoking work has not only redefined artistic expression, but has also played a significant role in advocating for social justice, equality, and empowerment. Black women artists have historically faced marginalization and underrepresentation within the art world. Despite these obstacles, they have persevered and crafted an artistry that encompasses a diverse range of themes, mediums, and styles. Artists in the exhibition include, Nina Chanel Abney, ruby onyinyechi amanze, Lauren Halsey, Rachel Jones, Toyin Ojih Odutola, Jennifer Packer, Calida Rawles, Deborah Roberts, Tschabalala Self, Amy Sherard, Mickalene Thomas, and Lynette Yiadom-Boakye. **Through July 21** - "Christopher Myers: Please Trouble Carry Me," will be on view and features the immersive and ethereal works from interdisciplinary artist Christopher Myers. **Through Sept. 22** - "Qualeasha Wood: code_anima," curated by Leandra-Juliet Kelley. The exhibition explores identity, physical and digital boundaries, and the process of individuation through analysis of complex and socially accepted paradoxes. Defined as "an individual's true inner self," anima serves as a leitmotif in Wood's introspective work, which examines the archetypes found within physical and digital societies. As the artist states, "This body of work draws inspiration from the concept of *deus ex machina* - a narrative device that introduces an unexpected, external force to resolve a complex situation. This device allows us to highlight the paradoxical position of Black women in society - cast simultaneously as both saviors and scapegoats within a white supremacist framework." **Ongoing** - Featuring selections from the John & Vivian Hewitt Collection of African-American Art, one of the nation's most important and comprehensive collections of African-American art. Hours: Thur. - Sat., noon-6pm & Sun., noon-6pm. Contact: 704/547-3700 or at (www.ganttcenter.org).

Lake Norman Art League Gallery, 442 S. Main St., located across the street from Wooden Stone, next to Masterworks; enter at the rear of the building, and turn right into the lobby, Davidson. **Ongoing** - Featuring works by Lake Norman Art League members. Hours: Mon.-Fri., 8am-7pm. Contact: 704/620-4450 or at (www.LKNart.org).

Latin American Contemporary Art Projects (LaCa), 1429 Bryant Street, in the heart of the revitalized FreeMoreWest neighborhood, Charlotte. **Ongoing** - LaCa Projects is a platform dedicated to the presentation, development, and promotion of Latin American art and culture within the United States. The gallery encourages cross-cultural dialogue by representing a small group of influential and thought-provoking contemporary, emerging and mid-career artists, as well as exhibiting a broader range of work by established and Master Latin American artists. The gallery, which has expertise in a number of different art media with a significant focus on paintings, will also be part of a larger planned expansion that includes open artist studios and a dining concept. Hours: Mon.-Fri., 1-5pm or by appt. Contact: Neely Verano at (neely@lacaprojects.com) or call 704/609-8487.

Levine Museum of the New South, 401 South Tryon Street, (former Wells Fargo Museum) Charlotte. **Ongoing** - "Charlotte: Moving Forward, Looking Back". To move forward and make the city a better place for everyone, we must look back and learn from choices made in the past. The exhibit tells the story of Charlotte from Native and early European settlement to today. The exhibition combines stories of people, places, and events in a foundational narrative of Charlotte history that answers thought-provoking questions about how we got here and where we are headed. Experience Charlotte stories through objects from

the Levine Museum's collections, interactive media displays, and art by local creatives.

Ongoing - Building a stronger, more equitable community by connecting people to Charlotte and to each other through history, culture, and celebration. Admission: Free. Hours: Tue.-Fri., 11am-5pm; Wed. till 9pm; Sat., 10am-5pm; & Sun., noon-5pm. Contact: 704/333-1887 or at (museumofthenewsouth.org).

Mint Hill Arts Gallery, 11205 Lawyers Road, Ste. A, Mint Hill. **Ongoing** - We are more than just a gallery; we are a vibrant hub of creativity, passionately committed to fostering a thriving arts community. Our gallery's mission is deeply rooted in our connection to the local community. From the moment you step through our doors, you'll be enveloped by the warmth and artistic spirit that defines our town. As artists ourselves, we understand the importance of cultivating an environment that nurtures and celebrates creativity in all its forms. Hours: Wed.-Sat., noon-3pm. Contact: 980/226-5532 or at (minthillarts.org).



Meissen Porcelain Manufactory (Germany, 1710-), Christian Gottlieb Jüchtzer, modeler (German, 1752-1812). "The Sacrifice," circa 1783-84, biscuit porcelain. Mint Museum, Charlotte, NC. Gift of the Delhom Service League. 2004.9

Mint Museum Randolph, 2730 Randolph Road, Charlotte. **Delhom Gallery, Through Aug. 11** - "The Delhom Service League: 50 Golden Years". The Delhom Service League (DSL) provided a half-century of generous support and impactful initiatives to The Mint Museum, helping to fund the acquisition of more than 200 works of art in the Mint's collection. The Delhom Service League: 50 Golden Years celebrates the Delhom Service League's enthusiastic support for the Mint by proudly displaying significant works funded or gifted by the affiliate group, plus selected publications, photographs and other memorabilia. In 2022, the Delhom Service League made the difficult decision to dissolve as a Mint affiliate. The league nevertheless remains an indelible part of the Mint's history, and its many contributions rightly deserve the museum's never-ending recognition and gratitude. In 1965, The Mint Museum purchased the exceptional collection of British, European, and Asian ceramics from Chicago collector M. Mellanay Delhom. Two years later, once the museum finished building a new wing that included a large gallery to display her holdings, Miss Delhom - as she preferred to be called - began offering weekly classes, open to the public, to discuss the works on view. **Ongoing** - "The Cole Family: A Dynasty of North Carolina Potters". From crocks, jars, and jugs to pitchers, candleholders, and vases, "turning pots" is one of the oldest and richest craft traditions in North Carolina. For more than 200 years, members of the Cole family have been potting in central North Carolina — Randolph, Moore, Lee, and Montgomery counties. Six generations of Coles, and no fewer than 18 individuals, are represented in The Mint Museum's permanent collection. More than 60 highlights of their wares are included in the installation "The Cole Family: A Dynasty of North Carolina Potters". One reason for its long-term success is that making pottery has so often been a family tradition in the state. Fathers taught the art of forming, glazing, and firing clay objects to their sons, and in later generations also to daughters, who in turn taught their children, and so on through the decades. These family dynasties not only helped to keep the potting craft alive, but ensured continuity in techniques and craftsmanship, as well as introduced artistic innovations in succeeding generations. "The Cole Family: A Dynasty of North Carolina Potters" presents a visual history of "turned pots" and the family that helped turn North Carolina into one of America's centers for handmade, traditional pottery. **Bridges and Levine Galleries, Ongoing** - "Contemporary British Studio Ceramics: The Grainer Collection". Focused on the collection of Diane and Marc Grainer, this installation is a survey of contemporary British studio ceramics. Comprising functional and sculptural objects made between the 1980s and today, the show features work by artists either born or residing in Great Britain,

continued on Page 53