

# NC Institutional Galleries

continued from Page 55

**C3/HAC Satellite Gallery**, 128 N Churton Street, Hillsborough. **Through June 24** - "Reflections by Anne Simpkin". Simpkin says, "These oil-on-paper paintings were created over the past five years, derived from photos that I have taken of window reflections and later, other reflective surfaces. They use the combined image of the reflection, the interior of the space, and the surface of the reflective object to create a multi-layered image from which I compose with color, shape, form, and texture." **Ongoing** - In partnership with C3 Hillsborough, a co-working space for many local businesses and entrepreneurs, HAC is further connecting artists & audiences through a collaborative gallery space. HAC's Satellite Gallery program seeks to expand our collective support of local artists and create more spaces for diversity in Hillsborough arts events & programs. Hours: Mon.-Fri., 9am-5pm and open till 9pm on select Last Fridays. Contact: 919/643-2500 or at ([www.hillsboroughartscouncil.org](http://www.hillsboroughartscouncil.org)).

**Eno Arts Mill**, 437 Dimmocks Mill Road, Suite 17, in Hillsborough. **June 7 - 29** - "On Common Ground: From the Mountain to the Sea," a statewide juried exhibition. The competition is hosted by the Pastel Society of North Carolina and sponsored, in part, by the Orange County Arts Commission. The 2024 statewide event begins with a three-day pastel technique workshop followed by a First Friday award reception on June 7, from 6-9pm. **Ongoing** - The Eno Arts Mill is an arts hub located in the historic Eno Mill in West Hillsborough, NC, managed by the Orange County Arts Commission. The Eno Arts Mill is home to the Eno Mill Gallery, a 1,000 square foot exhibit space that offers our studio artists the opportunity to exhibit their work. Each of our studio artists have a one-month featured exhibit of their work on a rotating basis. New gallery exhibits open the first Friday of each month and feature the opportunity to visit our artist studios and enjoy live music, food trucks and beverages. Hours: Tue.-Sat., noon-5pm. Contact: 919/245-2335 or at ([artsorange.org](http://artsorange.org)).

**The HAC Gallery**, Hillsborough Arts Council, 102 North Churton Street, across the street from the Wooden Nickel, Hillsborough. **Through June 23** - "Mythic Masks," featuring cultural crowns and masks based on woodland spirits by John Claude Bemis. John Claude Bemis is a sculptural mask-maker based in Hillsborough, NC. He makes his home on the banks of the Eno River where the woods and the magic of the natural world are the portal for his imagination. In his other creative career, John writes novels, picture books, and graphic novels about magic and wonder. This is his first solo art show. **Ongoing** - Offers a venue for emerging and mid-career artists to show and sell their work. Hours: Wed.-Sat., noon-4pm. Contact: 919/643-2500 or at ([www.hillsboroughartscouncil.org](http://www.hillsboroughartscouncil.org)).



View of previous Hillsborough's Legendary Handmade Parade

Alternative Art Space - Hillsborough **Burwell School Historic Site**, 319 N. Churton Street, Hillsborough. **June 1, starting at 4pm** - "Hillsborough's Legendary Handmade Parade!" Participants and spectators can expect to be swept away by the sights and sounds of this grassroots, Mardi Gras-style walking parade, featuring music, colorful costumes, painted faces, giant puppets, stilt walkers, dancers, and more! Handmade Parade will kick off with staging at 3pm at the Burwell School Historic Site, followed by the procession starting at 4pm along a Churton Street route. Contact: 919/643-2500 or at ([www.hillsboroughartscouncil.org](http://www.hillsboroughartscouncil.org)).

## Hudson

**Red Awning Gallery at The HUB Station Arts Center**, 145 Cedar Valley Road, Hudson. **Ongoing** -

**going** - An 80-year-old, former school campus has been transformed by the Town of Hudson into a 21st century hub for business development and artistic creation and enjoyment. The Town chose to blend the past with the present as they envisioned the future for residents and visitors. We invite you to visit HUB Station - former Hudson School - a classical structure and repurposed treasure celebrating the vitality of community through arts and business. Gallery hours: Wed.-Fri., noon-5pm & Sat., 10am-2pm. Contact: 828/726-8871 or at (<https://www.thehubstation.com/>).

## Kings Mountain

**Southern Arts Society Gift Shop & Gallery**, 301 N. Piedmont Ave. (NC 216), located in the old Southern Railway Depot at the corner of Battleground Ave and N. Piedmont Ave in the Kings Mountain Art Center, Kings Mountain. **The Reavis Gallery, Through June 7** - "I Am Woman," 2024 Competition and Exhibition. **Ongoing** - Exhibits, gift shop & classes. Hours: Tue.-Sat., 10am-2pm and by appt. Contact: 704/739-5585, e-mail at ([southernartsociety@gmail.com](mailto:southernartsociety@gmail.com)) or at ([www.southernartsociety.org](http://www.southernartsociety.org)) and Facebook.

## Kinston

**Community Council for the Arts**, 400 N. Queen Street, Kinston. **Ongoing** - The Community Council for the Arts is the regional center unifying community ties through exposure to the arts and providing rich cultural experiences while promoting tourism, economic development, and educational opportunities for all. **Ongoing** - Shop the Art Market - Featuring paintings, pottery, jewelry, glassware, baskets, textiles, soaps, quilts, woodwork & more - always changing. Hours: Tue.-Fri., 10am-6pm & Sat., 10am-4pm. Contact: 252/527-2517 or at ([www.kinstoncca.com](http://www.kinstoncca.com)).

**SmART Gallery**, 210 N Queen Street, Kinston. **Ongoing** - As an art gallery in Kinston, SmART Gallery promotes and showcases the work of the "smARTist" - artists-in-residence participating in the SmART Kinston City Project Foundation. Our gallery provides an inviting and welcoming space for the public to buy and admire these artists' works. By providing a space in which to display their latest pieces, artists appreciate their role in sharing their creative aspirations with a wider audience. Hours: Thur.-Sat., 2-6pm & Sun. 1-4pm. Contact: 252/933-9072 or e-mail at ([smartgallery2019@gmail.com](mailto:smartgallery2019@gmail.com)).

## Leland

**Leland Cultural Arts Center**, 1212 Magnolia Village Way, Leland. **Through June 1** - "5th Annual It's ALL Art! Exhibition & Sale," juried by Rhonda Bellamy. Over \$2K total awards across 3 categories! We are excited to announce that Rhonda Bellamy will be our official juror for the 2024 exhibition. Over 120 artists will be represented with over 1000 pieces of artwork and bin work for sale. There will be over \$2000.00 total awards across three categories. Hours: Mon.-Thur., 9am-9pm; Fri., 9am-3pm; & Sat., 9:30am-3pm. Contact: 910/385-9891 or at (<http://www.townofleland.com/lcac-gallery-program>).

## Lenoir



WNC Sculpture Center & Park in Lenoir, NC

**Western North Carolina Sculpture Center & Park**, 4612 Patterson School Drive, Lenoir. **Ongoing** - The Western North Carolina Sculpture Center & Park is dedicated to connecting people with the arts through exhibitions, interactions with artists, and the opportunity to experience creative processes in an inclusive environment. The WNC Sculpture Park is on track to hit the 100 sculptures mark this year, a great milestone to coincide with its 5th year anniversary. Hours: e-mail for hours. Contact: e-mail at ([wncsculpture@gmail.com](mailto:wncsculpture@gmail.com)) or at ([www.wncsculpture.org](http://www.wncsculpture.org)).

## Lumberton

**Inner Peace Center for the Arts**, 700 N. Roberts Avenue, Lumberton. **Ongoing** - We are

an art gallery designed to educate, enlighten, enrich and entertain patrons of all ages while providing leadership and support to advance the visual and performing arts in our community. Hours: Wed.-Fri., 11am-5pm. Contact: 910/733-1046 or at ([www.ipcart.com](http://www.ipcart.com)).

## Marshall

**Flow Gallery**, 14 S. Main St., Marshall. **Ongoing** - Flow is a cooperative gallery owned, operated and curated by artists, offering for sale the best of local and regional crafted objects and arts, traditional and contemporary. Hours: Tue.-Sat., 10am-4pm or by appt. Contact: 828/649-1686 or at ([www.flowmarshall.com](http://www.flowmarshall.com)).

## Mars Hill

**Mars Landing Galleries**, 37 Library Street, Mars Hill. **Ongoing** - Mars Landing Galleries is a standout gallery for the works of artists and makers nestled in and around the Blue Ridge Mountains. Each exhibit space is curated as a solo-show, in an effort to provide viewers ample space for contemplation, connection, and ultimate appreciation of exquisite works not readily displayed locally. Hours: Wed.-Sat., 11am-5 or by appt. Contact: 828/747-7267.

**Weizenblatt Gallery**, Moore Fine Art Building, Mars Hill University, 79 Cascade Street, Mars Hill. **Closed for renovations until August.** Hours: Mon.-Fri., 10am-4pm. Contact: Skip Rohde, Weizenblatt Gallery Director at 828/273-6476 or visit (<https://www.mhu.edu/about/what-to-do-and-see/weizenblatt-gallery/>).

## Marshville

**Marshville Museum and Cultural Center**, 201 North Elm Street, Marshville. **Ongoing** - Featuring paintings by local artist Mary Erickson. Other well known artists from Marshville include Hooper Turner, Sally Griffin, Richard Smith, Frank Faulkner, Louise Napier, and Stewart Allen. Hours: Mon.-Thur., by appt. only; Fri.-Sat., 10am-4pm; & Sun. 1-4pm. Contact: 704-624-6214 or at (<http://mmcc1893.com/index.html>).

## Mooresville

**Mooresville Arts - Gallery & Art Center**, located in the historic Mooresville Depot in downtown Mooresville at 103 W. Center Ave. Mooresville. **Ongoing** - fine art exhibits change every other month, featuring local & regional artists - the best art gallery in the Lake Norman area and beyond! Also, featuring The Shop, our artist and artisan gift shop. Take a class or workshop with us, and learn from experienced and talented local artists! Hours: Tue.-Sat., noon-4pm. Contact: 704/663-6661 or at ([mooresvillearts.org](http://mooresvillearts.org)).

## Morehead City

**Arts Council of Carteret County & Carolina Artist Gallery**, 1702 Arendell Street, Morehead City. **Through June 8** - "Rescue Me". Co-directed by three resident artists with the Carolina Artist Gallery, Jamison Ippock, Lorraine McElroy, and Maria Morando, "Rescue Me" will embrace the opportunity to contribute to needs in the community with their selection of three non-profit organizations including the Foundation for the Shackleford Horses, the Backpack Program serving children of Carteret County, and the Carteret County Humane Society and Animal Shelter. Hours: call ahead. Contact: 252/726-9156 or visit ([www.artscouncilcarteret.org](http://www.artscouncilcarteret.org)).

## Morganton

**KATZ Arts Collective**, 116 W. Union Street, Morganton. **Ongoing** - It is a collective of artists, both online and in-house. It operates as a non-profit; any money left over after expenses goes back into the cooperative. Many different specialties including weaving, painting, photography, pottery, sculpture, and more are represented at the KATZ. Included in its amenities are a free children's area, display galleries and shelves, rental studios, and an event space. Hours: N/A. Contact: visit us on Facebook (<https://www.facebook.com/thekatzartcollective>) or e-mail us at ([thekatzartcollective@gmail.com](mailto:thekatzartcollective@gmail.com)).

## Mount Airy

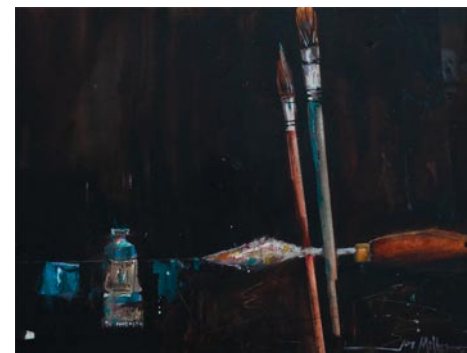
**Mount Airy Museum of Regional History**, 301 North Main Street, Mount Airy. **Ongoing** - Ours is an all American story - typical of how communities grew up all across our great nation. While our story takes place in the back country of northwestern North Carolina at the foot of the Blue Ridge Mountains, it is likely to bear many similarities to the development of crossroads, towns, and cities throughout America. It had taken little more than 100 years for the corridors along the coastline of this still-new continent to overflow. As tensions grew and conflicts flared, the pioneer spirit set in. Families literally packed up everything they owned and headed into the unknown-searching for the "promised land." Admission: Yes. Hours: Mon.-Sat., 10am-5pm &

Sun., 1-4pm. Contact: 336/786-4478 or at ([northcarolinamuseum.org](http://northcarolinamuseum.org)).

## New Bern

**Community Artists Gallery & Studios, Inc.**, 504 South Front Street, New Bern. **Ongoing** - We serve Craven, Pamlico, and Jones counties. Operated by member artists themselves on an exclusively volunteer basis, it's a great place to discover distinctive, affordable art for your home or office-or to find a truly unique gift. Visit our Gallery and Studios pages to see what's currently on exhibit-and on our easels! Community Artists Gallery & Studios supports working studio space for fifteen artists and exhibits nearly a dozen additional artists at any given time. Our members are engaged in creating jewelry, photography, weaving, found object art, sculpture, ceramics, digital art, watercolor, oil, baskets, stained glass, and acrylic paintings. Hours: Tue., Thur., Fri., & Sat., 10am-4pm. Contact: 252/571-8566 or visit ([www.communityartistsgallery.org](http://www.communityartistsgallery.org)).

## North Wilkesboro



Work by Jo Miller

**Wilkes Art Gallery**, 913 C. Street, North Wilkesboro. **Main Gallery, Through June 27** - "Tribute to Joe Miller," also featuring works by Josiah King, Craig Franz, and Tara Spil. **Ongoing** - Founded in 1962 in the parlor of Annie Winkler's home, the Wilkes Art Gallery has experienced transformations over the years. The most dramatic of these was the 2004 move into the renovated 1925 North Wilkesboro Post Office building. WAG offers a variety of classes, workshops, meet-the-artists events and special outreach projects. WAG hosts exhibitions that offer community members a chance to show their work and admission is always free. Visit our online gift shop. Hours: Tue.-Fri., 10am-5pm and Sat., 10am-2pm. Contact: 336/667-2841 or at ([www.wilkesartgallery.org](http://www.wilkesartgallery.org)).

## Old Fort

**Arrowhead Artists and Artisans League Inc.**, 78 Catawba Avenue, Suite C-D, next to the parker hosiery building, 2 minutes from Exit 73 on Interstate I-40, Old Fort. **Ongoing** - The main Gallery space is about 1800 square feet, with an open, industrial feel. Art, ranging from traditional to abstract and mixed media, hangs on the walls. On the main floor are displays of various types of fine crafts, such as jewelry, pottery, fiber art, hand crafted baskets, and hand turned wooden bowls. You might even see a welded "junk yard" critter or two. After viewing all of the various arts and crafts, visitors can walk through a wide archway on the right to view more fine art and craft work and talk to the artists and students in several studios and the AGS classroom. If a studio door is open, visitors are being invited to step inside and enjoy the work. Currently, our Gallery and studio artists and artisans include: Lorelle Bacon, Ann Whisenaut, Karen Piquette, David Kaylor, Dawn Driebus, Len Eskew, Wayne Stroud, Susan Taylor, Cathy Green, Anne Bevan, John Sullivan, Evelyn Chrisawn, Tim Muench, Chuck Aldridge, Charles Davis, Fredreen Bernatovicz, Anne Allison, Darlene Matzer, Billie Haney, Marguerite Welty, Jean Ryan, Kasha Baxter, Linda Magnus, Kim Hostetter, Bunnie Burgin, Sonya Russell, Helen Sullivan, Janet Bennett, and Sabrina Miller. Hours: Tue.-Sat., 10am-6pm & Sun., 1-4pm. Contact: 828/668-1100 or at (<http://arrowhead-art.org/>).

## Outer Banks Area

**Dare County Arts Council**, 300 Queen Elizabeth, Manteo. **Vault Gallery, Through June 1** - "Group Pottery Show," featuring works by Lauren Evans, Genevieve Stewart, Melanie Westheiden, and Skyla Lamberto-Egan. Hours: Tue.-Fri., 10am-5pm and Sat., 10am-4pm. Contact: 252/475-4843 or at ([www.DareArts.org](http://www.DareArts.org)).

## Pembroke

**A.D. Gallery**, University of NC at Pembroke, Locklear Hall, 1 University Dr, Pembroke. **Ongoing** - The A.D. Gallery is sponsored by the Art Department of the University of North Carolina at Pembroke. Serving the university and local community, the gallery provides a venue for student and faculty work, as well as that of local, regional, national and international

continued on Page 57