

sons offering a selection of functional stoneware, ceramics, blown glass, jewelry, furniture, candles, wind chimes, toys baskets, and even handmade musical instruments. Hours: daily, 10am-6pm. Contact: 919/528-1041 or at (www.cedarcreekgallery.com).

Dillsboro

The Golden Carp Gift Shop & Gallery, Webster Street, Dillsboro. **Ongoing** - Featuring works by local and select American watercolorist, including works by artist-in-residence, John P. Miele. Also, baskets, pottery, fiber arts, and more. Hours: . Contact: 828/586-5477 or at (www.thegolden-carp.com).

Village Studio Gallery, 130 Front Street, Weaverville. **Ongoing** - Featuring works from regional artists including D. Morgan and Paula Vaughn and other national artists. Hours: Tue.-Sat., 10am-5pm. Contact: 828/586-4060.

Durham

Craven Allen Gallery, 1106 1/2 Broad St., Durham. **Ongoing** - Featuring local artists in various mediums. Hours: Mon.-Fri., 10am-6pm & Sat., 10am-4pm. Contact: 919/286-4837 or at (www.cravenallengallery.com).

Horizon Gallery, 905 W. Main Street, Brightleaf Square, Durham. **Ongoing** - Featuring contemporary crafts including pottery, art glass, wood works, jewelry, garden art, kaleidoscopes and much more. Hours: Mon.-Sat., 11am-8pm & Sun., 1-6pm. Contact: 919/688-0313.

LabourLove Gallery, Golden Belt complex, Suite 2-130, 807 E. Main Street, Durham. **Ongoing** - Featuring works by a collective of North Carolina fine artists, designers, and musicians. Hours: Tue.-Sat., 11am-7pm. Contact: 919/373-4451 or at (<http://labourlove.com/>).

Nancy Tuttle May Studio, 806 Ninth St, Durham. **Ongoing** - Featuring works by Nancy Tuttle May. Hours: Mon.-Fri., 9am-1pm or by appt. Contact: 919/688-8852.

Through This Lens Photo Gallery, 303 East Chapel Hill St, Durham. **Ongoing** - Featuring work of national and local artists. Books and postcards also for sale. Framing services. Hours: Tue.-Fri., 10:30am-5:30pm & Sat., 10:30am-2:30pm or by appt. Contact: 919/687-0250, e-mail at (info@throughthislens.com).

Fairview

Willow Wisp Farm Studios Gallery, 1615 Charlotte Hwy, Fairview. **Ongoing** - Featuring works by the instructors and students who have attended Willow Wisp Farm Studios. Hours: Fri.-Sat., 10am-5pm and Sun., 1-5pm. Contact: 888/590-4ART, 828/628-0401, or e-mail at (art@willowwispfarmstudios.com).

Gastonia

Butler Studio Fine Art Gallery, 171 W. Main St., located on the 2nd floor of the brick building next to the Park on Main, Gastonia. **Ongoing** - The gallery will continue to rotate in new works by Curt Butler. Hours: M, T, Th, F, 9am-5pm or by appt. Contact: 704/460-2386 or at (www.butlerstudio.org).

Lynn B. Hutchins Studio & Gallery, 195 West Main Avenue, in the historic Commercial Building on the corner of South & Main, Gastonia. **Ongoing** - Representational, figurative oil paintings and drawings exhibited in the ground-level display windows. Hours: 24 hr./day or by appt. Contact: 704/869-0441 or at (www.art-hutchins.com).

Greensboro Area

Throughout Greensboro, first Fri. of the month, till 9pm - "First Friday," featuring a gallery crawl of several gallery spaces in Greensboro. For further info (www.uacarts.org).

Ambleside Gallery, 528 South Elm Street, Greensboro. **Ongoing** - Featuring works by artists from around the world. Among them are English artists Phil Hobbs, Kenneth Denton, and Matthew Hillier. American painters Bill Hosner, Tracy Reid, Richard Sedlack and Rich Nelson, and internationally recognized Chinese watercolorist Guan Weixing, plus many other noteworthy artists are included in the gallery collections. Hours: Mon.-Sat., 11am-6pm or by appt. Contact: 336/275-9844 or at (www.amblesidearts.com).

ArtWorks Collective Gallery, 205 Lyndon Street, Greensboro. **Ongoing** - Featuring works by members of Lyndon Street ArtWorks center. Hours: Mon.-Sat., 10am-5pm & by appt. Contact: 336/370-0025 or at (www.artworkscollective.com).

Earthworks Gallery, (formerly South Elm Pottery) 500 S. Elm Street, Greensboro. **Ongoing** - Featuring works by Molly Lithgo and Jim Rientjes, proprietors, focusing on NC made art. The primary focus will be pottery, but the gallery will also offer other gift items, such as jewelry, soap, note cards and candles; all made by North Carolina artisans. Hours: Tue.-Sat., 11am-6pm & Sun., noon-5pm. Contact: 336/275-1202 or at (www.earthworkspotterygallery.com).

JMR Sculptures, Gateway Center, 620 S. Elm Street, Suite 240, Greensboro. **Ongoing** - Featuring sculpture by Jay M Rotberg. Hours: Mon.-Fri., 10am-4:30pm or by appt. Contact: 336/389-0333 or at (www.jmrsculptures.com).

Lost & Found Gallery, 517 South Elm Street, Greensboro. **Ongoing** - Folk art, tribal art, textiles, and beads of the world. Hours: noon - 5:30pm, closed Wed. & Sun. Call ahead. Contact: 336/271-6954.

Lyndon Street Artworks, 205 Lyndon Street, Greensboro. **Ongoing** - Featuring works by resident artists. Hours: Mon.-Sat., 10am-5pm. Contact: 336/370-0025 or at (www.lyndonstreet.com).

The Art Shop, 3900 W. Market St., Greensboro. **Ongoing** - Featuring works by Pino, Arvid, Park, Garmash, Sabzi, Hessam and others. We feature America's most collected artists. We also carry sculpture by Frogman (Tim Cotterill), Leon Bronstein & Paige Bradley and fine art glass by Randy Strong, John McDonald & Scott Bayless. Thomas Kinkade; original oil paintings, limited edition prints and posters. Hours: Mon.-Fri., 10am-6pm; Tue. & Wed till 7pm & Sat. 10am-5pm. Contact: 336/855-8500 or at (www.artshopnc.com).

The Artery Gallery, 1711 Spring Garden Street, Greensboro. **Ongoing** - Featuring works by David Thomas, Roy Nydorf, Bruce Shores, Matthew Micca, Lisa Woods, Bill Clubb, Jack Stratton, Erin Stesch, Vito Ciccone, Alex Forsyth, Martin Dunn, and more. Hours: Mon.-Thur., 10am-6pm; Fri., 10am-5pm; & Sat., 10am-4pm. Contact: 336/274-9814 or at (www.arterygallery.com).

Tyler White Gallery, 307 State Street, beside Cafe Pasta at the intersection of Golden Gate & State Streets, Greensboro. **Ongoing** - Tyler White Gallery offers residential and corporate fine art consulting services. We will outline a personalized budget plan for your specific needs. We also offer art research, presentation and installation services. Whether you are an avid art collector or a first time purchaser, Tyler White Gallery will guide you every step of the way. Hours: Mon.-Fri., 11am-5pm & Sat., 11am-4pm. Contact: call Kathy O'Brien (owner) at 336/279-1124 or at (www.tylerwhitegallery.com).

Uptown Artworks, 1007 Arnold Street, located between E. Wendover Ave. and E. Bessemer Ave., Greensboro. **Ongoing** - Primarily a "working artist studio," our 5,400 square foot facility has a large front gallery and currently houses 10 studios with room to build 7 more. Hours: Mon., 10am-4pm; Sat., 10am-2pm; Sun., 1-4pm or by appt. Contact: Joseph A. Wilkerson at 336/255-6345 or at (<http://www.UptownArtworks.org>).

William Mangum Watercolors/Carey-Mangum Gallery, 2182 Lawndale Dr., Greensboro. **Ongoing** - Original paintings, limited edition prints, miniature prints, posters and notecards by William Mangum. Hours: Mon.-Fri., 10am-5:30pm & Sat., 10am-3pm. Contact: 336/379-9200 or 800/887-5380.

Winter Light Gallery & Art Studios, 410 Blandwood Ave., corner of Blandwood Ave. and Spring Garden St., Greensboro. **Ongoing** - Featuring works by Kim Holleman, Vicki Johnson, Judy Meyler, Carol Meetze-Moates, Kathy Phillips, Steve Robinson, Carol Sams, Alie Scott, Phyllis Sharpe, Jane Smith, Stephanie Thomas, Steve Thomas and Jeanne Twilley. Hours: Mon., Tue., Thur., & Sat., 11am-2pm. Contact: 336/274-7372 or at (www.winterlight-artists.com).

Yew Tree Gallery, 604 S. Elm St., Greensboro. **Ongoing** - The gallery is a subsidiary of Ambleside Gallery, and is home to 16 painters who work in a variety of media and styles, including oils, acrylic, pastel, pen and ink, and watercolor. The gallery also features pottery. Hours: Wed.- Sat., 11am-5pm or by appt. Contact: 336/790-8703.

Greenville

City Art Gallery, 511 Red Banks Road, Greenville. **Ongoing** - The gallery features the works of established regional and national artists and craftspeople. The gallery offers an extensive collection of paintings, sculpture, ceramics, glass, drawings and photography. Hours: Mon.-Fri., 10am-6pm & Sat., 10am-4pm or by appt. Contact: 252/353-7000 or at (www.CityArtGreenville.com).

Uptown Art Supply & Gallery, a division of UBE, 529 S Evans Street, Greenville. **Ongoing** - Featuring works in a variety of media by local and regional artists. Hours: Mon.-Fri., 9am-6pm and Sat., 10am-5pm. Contact: 252/752-0688 or at (www.uptownart.net).

Hendersonville - Flat Rock

A Show of Hands, Arts of the Appalachians, 305 N. Main Street, Hendersonville. **Ongoing** - Featuring works by Appalachian artists including, blown glass, wood carving, jewelry, wooden spoons, boxes, etc., and works by over 60 potters. Hours: Mon.-Sat., 10am-5pm & Sun., 1-5pm. Contact: 828/698-7673.

Carolina Mountain Artists, 444 N. Main Street, Hendersonville. **Ongoing** - Featuring works by regional and local artists in every media. Hours: Mon.-Sat., 10am-6pm & Sun., 1-5pm. Contact: 828/696-0707.

Hand in Hand Gallery, 2720 Greenville Hwy., Flat Rock. **Ongoing** - The gallery is a regional art and fine craft gallery featuring works by over 150 artists from the Southern Appalachian area in all mediums of original artwork. Owned by potter David Voorhees and jeweler Molly Sharp, the gallery features the Voorhees Family of artists on an ongoing basis. Hours: Mon.-Sat., 10am-6pm & Sun., 1-5pm. Contact: 828/697-7719 or at (www.handinhandgallery.com).

McCarter Gallery, 451 N. Main St., Hendersonville. **Ongoing** - Featuring the working studio-gallery of landscape artist Alan McCarter, specializing in his acrylic paintings of the beauty of Nature in the Blue Ridge and Great Smoky Mountains. Also, featuring a display of new works monthly. And, watercolors and acrylics of Robbin McCarter and art glass by Czech glass master Igor Muller and Canadian Robert Held. Hours Mon.-Sat., 10:30am-5:30pm & by appt. Contact: 828/698-7117 or at (www.mccarter-gallery.com).

Narnia Studios, 315 N. Main St., Hendersonville. **Ongoing** - Featuring works by local and regional artists in a variety of media. Hours: Mon.-Sat., 9:30am-6pm. Contact: 828/697-6393 or at (www.narniastudios.com).

Silver Fox Gallery, 508 N. Main Street, Hendersonville. **Ongoing** - Featuring contemporary fine art, hand-crafted artworks from the US only, from primarily regional artists. And, now Home Furnishings. Hours: Mon.-Thur., 10am-6pm; Fri., 10am-7pm; Sat., 10am-6pm; Sun., noon-5pm. Contact: 828/698-0601 or at (www.silverfoxonline.com).

The Conn-Artist Studios & Art Gallery, 611 Greenville Hwy. (S.Main/Rte 225), Atha Plaza, Hendersonville. **Through Sept. 15** - "Deeper Than Dreams: Archetypal Visions and Healing," featuring works by Rowan Farrell. Rowan's vivid paintings embrace the depth of the nurturing, sacred and spiritual wisdom of our foremothers," the gallery said in a statement. "These images of healing and soul retrieval remind us of our spiritual place in the world and our connection to all that is." **Ongoing** - Fine art landscapes by Barbara Hipwell, mixed media by Constance Vlahoulis and works by other area artists, including Vintage Finds Art Necklaces by Elizabeth. Hours: Wed. & Fri., 10am-5pm, & Sat., 10am-4pm, (most Tues & Thurs noon-5 -call first). Contact 828/329-2918 or at (www.Conn-Artist.com).

The Portrait Source, Hwy. 225 S., along "Little Rainbow Row", Flat Rock. **Ongoing** - Representing the nation's finest portrait artists and we help clients find the perfect artist for both families and the corporate world. We have expert sales consultants throughout the country. Visit our unique gallery where we have a continuing display of sample paintings. Hours: Mon.-Sat., 10am-4pm or by appt. Contact 800/586-6575 or at (www.theportraitsource.com).

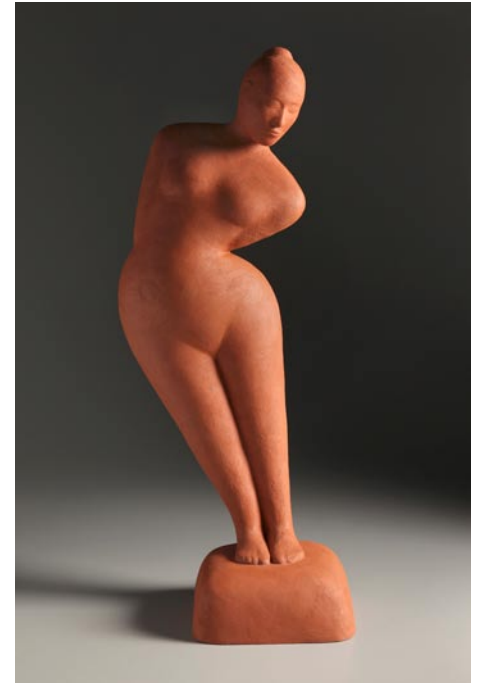
WICKWIRE fine art/folk art ". . . where the heart finds art", 330 North Main St., Hendersonville. **Ongoing** - Original, new works of traditional and transitional art and contemporary folk art of the highest quality - paintings, American handmade craft, handcrafted furniture, photography, jewelry & more. Hours: Mon.-Sat., 10am-6pm & Sun. 1-4pm. Contact: 828/692-6222 or at (www.wickwireartgallery.com).

Hillsborough

Downtown Hillsborough, July 27, Aug. 31, Sept. 28, Oct. 26, Nov. 30, 6-9pm - "Last Fridays Art Walk." The Hillsborough Arts Council invites everyone to visit local galleries and artist studios in historic downtown Hillsborough including: The Gallery at the Hillsborough Arts Council, Melissa Designer Jewelry, ENO Gallery, Hillsborough Artists Cooperative and The Skylight Gallery, Coldwell Banker Howard Perry and Walston, Cup A Joe, Callaway Jewelry &

Spiral Studios, Sovero Art Gallery & Studio, Hillsborough Gallery of Arts, and The Depot at Hillsborough Station. For further info visit (www.lastfridaysartwalk.org).

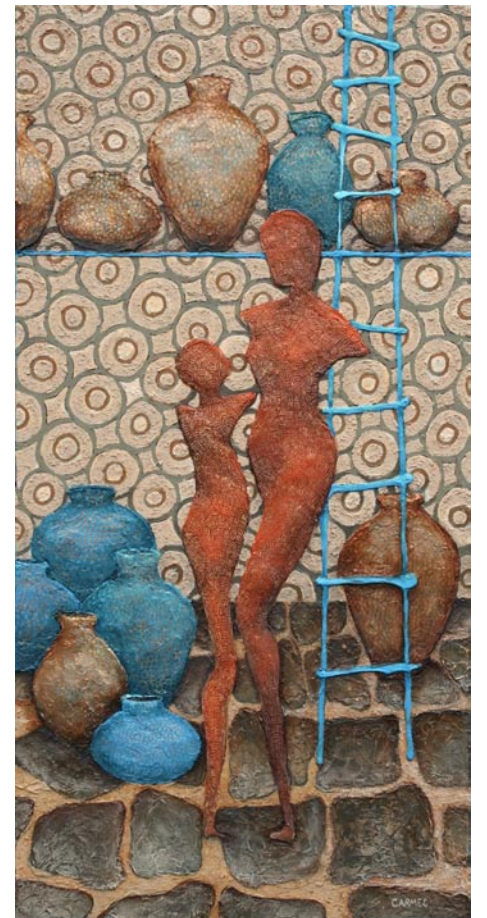
Callaway Jewelry & Spiral Studios, 115 North Churton Street, Hillsborough. **Ongoing** - Offering beautiful handmade jewelry in sterling silver and gold by metalsmiths/designers Catharine Callaway and Jeannine Rogers. Hours: Mon.-Fri., 10am-6pm & Sat., 10am-4pm. Contact: 919/732-2013 or at (<http://www.sterlingspirals.com/>).



Work by Donna Polseno

ENO Gallery, 100 South Churton Street, Hillsborough. **Upper Gallery, Through Aug. 25** - "Jacob Cooley - Landscape Paintings," and "Donna Polseno - Ceramic Figurative Sculpture". This exhibition presents the figurative ceramic sculpture of Donna Polseno and the landscape oil paintings of Jacob Cooley. **Lower Gallery, Through Aug. 25** - Featuring works by ceramic artist Nick Joerling. Joerling's pottery has always had a sculptors sensibility. More than simply creating a functional vessel Joerling's pottery captures and portrays a lyrical sense of movement. **Ongoing** - The gallery represents exceptional contemporary emerging and established artists for both first time buyers and discerning collectors. Eno Gallery is a unique and intimate exhibition space. We offer work from artists of exceptional quality and dedication. Representing some of the most creative individuals from regional and national communities. Hours: Tue.-Thur., noon-6pm & Fri.-Sat., noon-8pm. Contact: 919/833-1415 or at (<http://www.enogallery.net/>).

Hillsborough Artists Cooperative and The Skylight Gallery, 102 West King Street, upstairs over Antonia's Restaurant, Hillsborough. **Ongoing** - Founded in 1992, featuring works by Jayne Bomberg and Tom Guthrie (The Studio of Collective Effervescence); Jennifer E. Miller, Andrea DeGette, Jacquelin Liggins, and Tiffney Marley. Hours: last Fri. of the month from 6-9pm or by appt. Contact: 919/929-2691 or 919/644-8637.



Work by Linda Carmel

Hillsborough Gallery of Arts, 121 N. Churton St., Suite 1-D, Hillsborough. **Through July 22** - "Scapes," featuring pottery by Garry Childs,

continued on Page 46