

gifts such as pottery, jewelry, metal art, etc. The store has a very "coastal" flair but all mediums and subjects are exhibited. Hours: Tue.-Fri., 10am-6pm; Sat., 10am-3pm; & by appt. Contact: 803/785-4278 or at ([www.sandlapperart.com](http://www.sandlapperart.com)).

#### Mt. Pleasant - Isle of Palms - Sullivan's Is.

**Accent Framing & Gallery**, 1303 Ben Sawyer Blvd., Mt. Pleasant. **Ongoing** - Original art by many of the Lowcountry's best artists featuring Martin Ahrens, Fletcher Crossman, Lynn Salkeld, Charles Parnell and Shea Fowler. Hundreds of prints and photographs in stock. We also offer painting lessons by master artists. Hours: M.-F., 10am-6pm & Sat., 10am-4pm. Contact: 843/884-5828.

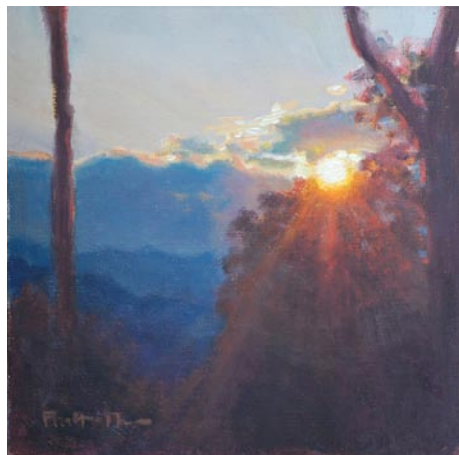
**Adele's Pottery Studio & Gallery**, 1659 Middle St., Sullivan's Island. **Ongoing** - Featuring wheel thrown & hand-built clay works by Adele Deas Tobin. Also offering classes for children and teens. Pottery on the wheel Sept.-May. Hours: daily, 11am-5pm & by appt. Contact: 843/883-9545.

**Artwerx Framing & Galleria**, The Plaza @ Park West, Mt. Pleasant. **Ongoing** - Featuring a unique, one-of-a-kind collection of original artwork, prints, giclees, hand painted gifts, custom mirrors, hand blown glass lamps, and hand made jewelry by local artists such as Greg Drexler, Susan Hauser, Will Helger, Steve Neff, Richard Rose, Michael Story, and photographer Lea Dales. Also - Professional, on-site custom framing, as well as a space for gifts. Hours: Mon.-Fri., 9am-6pm & Sat., 10am-4pm. Contact: 843/971-4643.

**Billie Sumner Studio**, Mt. Pleasant. **Ongoing** - Featuring original contemporary paintings and monotypes by Billie Sumner. Hours: by appt. only. Contact: 843/884-8746.

**Complements Gallery**, 630 Johnny Dodds Road, Mt. Pleasant. **Ongoing** - Featuring pottery by Mary Jeffries. Hours: Mon.-Sat., 10am-5pm. Contact: 843/881-4035.

**Karen's Korner**, Gateway to the Beach center, 1405 Ben Sawyer Blvd., near CVS, Mt. Pleasant. **Ongoing** - Offering high quality custom framing, originals and prints by Charlynn Knight, Carol McGill, Sabine Avacalade, Kevin Curran, and Carol Ann Curran. Photography by Scott Henderson, Marc Epstein, as well as pottery, stained glass and other fine art objects. Hours: Mon.-Fri., 10am-6pm & Sat., 10am-4pm. Contact: 843/971-4110 or at ([www.karenskornerframeandart.com](http://www.karenskornerframeandart.com)).



Work by Leslie Pratt-Thomas

#### New Location

**Sandpiper Gallery**, 2201 Middle Street, across the street from Poe's Restaurant and beside Station 22 Restaurant, Sullivan's Island. **Through July 7** - "Heart Shaped World," featuring a show of up to 15 new works in oil by Leslie Pratt-Thomas. **Ongoing** - Featuring a distinctive selection of fine art, including oils, watercolors, acrylics and linocuts by local and regional artists. Functional pottery and art pottery, raku, original designed jewelry, sculpture, glass, mobiles, photography & unique one of a kind home furnishings, all created by established and emerging local and regional artists including Ann Lee Merrill, Roberta Remy, Rich Nelson, Anita Louise West, Douglas Grier, Kathy Sullivan, Michael Patterson, Madeline Dukes. Custom framing available. Hours: Mon.-Fri., noon-7pm & Sat., noon-5pm. Contact: 843/883-0200 or at ([www.sandpipergallery.net](http://www.sandpipergallery.net)).

**The Treasure Nest Art Gallery**, 1055 Johnnie Dodds Blvd., Hwy. 17 frontage road., Crickentree Village, Mt. Pleasant. **Ongoing** - Featuring over 700 hand-painted oils and 1,000 frames at wonderful quality and truly superb value. Works by highly accomplished artists from the Southeast, US National, and International locales. Offering a great variety of subjects including: Lowcountry marshscapes, beachscapes, wildlife, boats, bridges and architecture; other US and European landscapes, cityscapes, and harbors; as well as still lifes, abstracts and much more. Hours: Mon.-Sat., 10am-6pm & Sun., 1-5pm. Contact: 843/216-1235 or at

([www.treasurenestartgallery.com](http://www.treasurenestartgallery.com)).

#### Myrtle Beach / Grand Strand

**Art & Soul, an Artisan Gallery**, 5001 North Kings Highway, in the Rainbow Harbor plaza, Myrtle Beach. **Ongoing** - Featuring works by such local artists as Giuseppe Chillico, Kim Clayton, Dina Hall, Carl Kerridge, Alex Powers, Robert Sadlemire and Ed Streeter. Hours: Mon.-Fri., 10am-5pm & Sat., 10am-4pm. Contact: 843/839-2727 or at ([www.artandsoulmb.com](http://www.artandsoulmb.com)).

**Collectors Cafe & Gallery**, 7726 North Kings Highway, Hwy. 17 and 78th Avenue, Myrtle Beach. **Ongoing** - 5,000 square foot gallery featuring local and regional artists. Hours: Regular cafe hours. Contact: 843/449-9370.

**Southern Portrait and Accents**, Village Square Shopping Center, Hwy. 17 & 40th Ave., 3901 N. Kings Hwy., Myrtle Beach. **Ongoing** - Featuring works by local artists including: Ruth Cox, Bill Strydesky, Susan Duke, Vittorio Santini, Giovanna Picasso, Sarain Gomez, Cheryl Reynolds-Castle, Damien Castle, Tadd Rubin, Marcie Macie-Hill, Claudio Olevido, Frank Ceruzzi, nostalgic photographer, Carlo Artga sculpture. Hours: Mon.-Fri., 10am-7pm; Sat. noon-4pm & by appt. Contact: 843-448-3303 or at ([www.southernportraitsandaccents.com](http://www.southernportraitsandaccents.com)).

**The Howard Gallery**, 532 West Broadway St., Myrtle Beach. **Ongoing** - Featuring a frame Shop and gallery of local award winning artists with cards and small gifts as well. Hours: Mon.-Fri., 9:30am-5:30pm & 3rd Thur. of the month from 5-7:30pm. Contact: 843/626-3118 or at ([www.thehowardgallery.com](http://www.thehowardgallery.com)).

**The Loft at The Howard Gallery**, 532 West Broadway St., Myrtle Beach. **Ongoing** - Featuring a gallery of award winning artists, featuring paintings by Carol Belcher, Elaine Bigelow, Sue Coley, Judy O'Brien and Jan Wurst, with collage, origami and ceramics by Millie Doud, ceramics by John Bolicki, photos by Suzanne Gaff, and photos and jewelry by Kelly Mezzapelle. Also a fine selection of framing by The Howard Gallery. Hours: Mon.-Fri., 9:30am-5:30pm & 3rd Thur. of the month from 5-7:30pm. Contact: 843/626-3118 or at ([www.thehoward-gallery.com](http://www.thehoward-gallery.com)).

ALTERNATE ART SPACES - Myrtle Beach **Chapin Park**, 1400 Kings Hwy and 16th Ave. N., Myrtle Beach. **Oct. 8 & 9 and Nov. 3 & 4, from 10am-4pm** - "40th Annual Art in the Park - Show & Sale," sponsored by Waccamaw Arts and Crafts Guild. We will have over 60 artists from the East Coast, as far away as TN, with about 20 of those artists from our local area. Typical art will include Paintings, Woodworking, Photography, Jewelry, Fabric, Glass, Metal, Pottery, Leather and Stone. Free admission and Kid friendly. For info call JoAnne Utterback, 843/446-7471 or at ([www.artsyparksy.com](http://www.artsyparksy.com)).

**Valor Park**, 1120 Farrow Parkway, Market common, Myrtle Beach. **Nov. 10 & 11, from 10am-4pm** - "Waccamaw Arts and Crafts Guild's 40th Annual Art in the Park". We will have over 60 artists from the East Coast and as far away as Tennessee with about 20 of those artists from our local area. Typical art will include paintings, woodworking, photography, jewelry, fabric, glass, metal, pottery and stone. No admission charge. Child and Pet Friendly! Contact: JoAnne Utterback at 843/446-7471 or ([www.artsyparksy.com](http://www.artsyparksy.com)).

#### North Charleston/Goose Creek

**Artistic Spirit Gallery**, 10 Storehouse Row, The Navy Yard at Noisette, North Charleston. **Ongoing** - Featuring original visionary artwork by people who are driven to produce as a form of self-expression or release. In addition to pieces by long departed anonymous artisans, work by Southern folk artists and contemporary visionaries such as William LaMirande, Casey McGlynn, Davy Marshall, Ed Larson, Alfred Eaker and Jerome Neal are featured. Hours: by appt. only. Contact: 843/579-0149 or at ([www.artisticspiritgallery.com](http://www.artisticspiritgallery.com)).

**Steve Hazard Studio Gallery**, 3180 Industry Dr., Suite A, Pepperdam Industrial Park, enter business park at Pepperdam from Ashley Phosphate Rd., North Charleston. **Ongoing** - Show & sale of contemporary fine craft and fine art. A gallery and working studio featuring works by Steve Hazard including 2-D & 3-D wall art, sculpture, vessels, accessories and jewelry in fused glass and etched clear glass; welded metal tables. Commissions accepted for gates and custom projects. Works in various media by local & guest artists include original paintings, sculpture and reproductions. Thursday - Saturday, 2 - 6 PM and by appointment. Hours: Thur.-Sat., 2-6pm (call ahead). Contact: 843/552-0001 or e-mail at ([afgraffiti@aol.com](mailto:afgraffiti@aol.com)).

**The Art of Sykes Gallery**, 1206 Redbank Road, Suite D-1, Goose Creek. **Ongoing** - Featuring a contemporary art gallery of sculptures, paintings, jewelry, and mixed media. Offering monthly exhibits featuring well-known and emerging national and regional artists. Hours: Mon.-Sat., 10am-7pm. Contact: 843/628-2286 or at ([www.ArtofSykes.com](http://www.ArtofSykes.com)).

#### Pawleys Island, Litchfield & Murrells Inlet

**Art Works**, Litchfield Exchange, 2 miles south of Brookgreen Gardens, behind Applewood's House of Pancakes, Pawleys Island. **Ongoing** - Featuring original work by 60 local artists in regularly changing displays. Paintings by Judy Antosca, Elaine Bigelow, Nancy Bracken, Ruth Cox, Mary Dezzutti, Dottie Dixon, Ernest Gerhardt, Susan Goodman, Kathleen McDermott, Hal Moore, Martha Radcliff, Nancy Van Buren, Nancy Wickstrom, Jane Woodward and others, as well as works in mixed media by Gwen Coley, Millie Doud, Sue Schirtzinger and Savana Whalen, clay by Rhoda Galvani, Scott Henderson, Elizabeth Keller, Jan Rhine, Oscar Shoenfelt and Caryn Tirsch, wood by John King and Johnny Tanner, bronze by Leez Garlock and Gayle Cox Mohatt, stained glass by Royal Elmendorf, painted glassware by Nancy Grumman, and gullah fabric art by Zenobia. Hours: Mon.-Sat., 10am-6pm. Contact: 843/235-9600 or at ([www.classatpawleys.com](http://www.classatpawleys.com)).

**Ebb & Flow Art Co-op**, 4763 Hwy. 17, across from Thomas Supply, right before the Wachesaaw Rd. intersection, Murrells Inlet. **Ongoing** - a new art gallery in Murrells Inlet that boasts a hefty array of local talent. The gallery features many different mediums from established artisans who have been working in the area for years as well as fresh new talent, including works by: Lee Arthur, Adrian Dorman, Gaston Locklear, Chuck May, Keels Culberson Swinnie, Ted Watts, Sara McLean, Larry Bell, Jason Moore, Amy Cox, Amy Locklear, Graham Lawing, Glen Grant, Susan Williams, Wes Gordon, Mary Manz, Allison Creagh, Kristen Montsinger, Bobbie Holt, Rich Kuhn, Jolyn Kuhn, Danny Foley, Dot Hannah, Tom Hora and many more! Hours: Tue.-Sat., 10am-5pm. Contact: 843/446-7076 or at (<http://www.keelsart.com>).

**Island Art Gallery**, 10744M Ocean Hwy., located in The Village Shops, Pawleys Island. **Ongoing** - The gallery was founded in 2005 as an art gallery, working studio, and Educational center. We provide service to both the private and corporate collector. We partner with a variety of artists and interior design professionals to present contemporary as well as traditional art that is accessible and affordable to the novice collector as well as established art connoisseurs. Artists include Betsy Jones McDonald, Jim Nelson, Kelly Atkinson, Bernie Slice, Sharon Sorrels, Betsy Stevenson, Jane Woodward and Cathy Turner. Hours: Mon.-Fri., 9am-5pm. Contact: e-mail to ([Islandartgallery@gmail.com](mailto:Islandartgallery@gmail.com)) or at ([www.Pawleysislandart.com](http://www.Pawleysislandart.com)).

**The Cheryl Newby Gallery**, 11096 Ocean Hwy 17., in The Shops at Oak Lea, Pawleys Island. **Ongoing** - Representing Sigmund Abeles, Ellen Buselli, Ray Ellis, Joseph Cave, Laura Edwards, Claire K. Farrell, Kathy Metts, Mike Williams, and Charles Williams; also sculptors Gwen Marcus and Catherine Ferrell. A large inventory of original antique natural history prints and engravings by Mark Catesby, John J. Audubon, John Gould, and others. Also original antique maps and charts from the 16th through the 19th centuries. Hours: Tue-Sat., 10am-5:30pm. Contact: 843/979-0149 or ([www.cherylnewbygallery.com](http://www.cherylnewbygallery.com)).

#### Rock Hill

**Gallery 5**, a contemporary artspace, 131 East Main Street, Suite 506 on fifth floor, downtown Rock Hill. **Ongoing** - Representing award-winning American artists, over 40 from 18 states, including paintings, sculpture, glass, ceramics and functional art. Hours: by appt., call 803/985-5000 and e-mail at ([galleryfive@comporium.net](mailto:galleryfive@comporium.net)).

**The Frame Shop and Gallery**, 570 N. Anderson Rd., Rock Hill. **Ongoing** - Offering original fine art, limited edition prints and posters as well as custom framing services. Hours: Mon.-Sat., 10am-5pm. Contact: 803-328-8744.

#### Seneca

**Patina on the Alley**, 114 Ram Cat Alley, Seneca. **Ongoing** - Featuring limited edition prints, giclees, originals, pottery and sculptures by local and regional artists such as Beti Strobeck, Wanda Heffelfinger, Gale McKinley, Diana Pursch, Fran Humphries, Paul Frederick, Connie Lippert, Kate Krause, Karen Dittman, Sue Grier, Bob Doster, and Brandy Weiner. We also have baskets by Pati English and Nancy Basket. Photography by Jack Kates, Carl Ackerman, Dede Norungolo, and Witt Langstaff. Also the working studio of Michael Brown. Hours: Tue.-Sat., 11am-6pm. Contact: 864/888-

1110 or at ([www.patinaalley.com](http://www.patinaalley.com)).

**The Artist's Loft**, 121-B Townville St., (upstairs) Seneca. **Ongoing** - Gallery and studio space for local artists/members including Edie Hamblin (winner of the "Blue Ridge Arts Council 19th Annual Juried Exhibition") and the new pARTy, Social Art Classes. Hours: Wed.-Sat., 10am-5pm. Contact: 864/882-2711, e-mail at ([theartistsloft@yahoo.com](mailto:theartistsloft@yahoo.com)).

#### Spartanburg

**Downtown Spartanburg, July 19, 5-9pm** - "Art Walk Spartanburg". Held on the 3rd Thur. of every month art galleries and art spaces in downtown Spartanburg will open their doors. Participating are: Spartanburg Art Museum, Artists' Guild of Spartanburg Gallery, HUB-BUB showroom, Carolina Gallery, and West Main Artists Cooperative. For more information call 864/585-3335 or visit ([www.carolinagaleryart.com](http://www.carolinagaleryart.com)).

**Art & Frame Gallery**, 108 Garner Road, Spartanburg. **Ongoing** - Featuring works by local artists, custom framing and art supplies. Hours: Mon.-Sat., 10am-5pm. Contact: 864/585-3700.

**Carolina Gallery**, 145 W. Main Street, Spartanburg. **Ongoing** - Featuring fine art originals by local, national and international artists including Linda Cancel, Carol Beth Icard, Daniel Cromer, Patricia Cole-Ferullo, Dominick Ferullo, Greg McPherson, Guido Migiano, Ann Stoddard, Richard Seaman, Steven Heeren, Bonnie Goldberg, Robert LoGrippo, Alan McCarter, Joan Murphy, Keith Spencer, Jim Creal, Scott Cunningham and many others. Hours: Tue.-Fri., 10:30am-5pm & Sat., 11am-4pm and by appt. Contact: 864/585-3335 or at ([www.carolinagaleryart.com](http://www.carolinagaleryart.com)).

**Creals Studio and Gallery**, Suite 950, Montgomery Building, 187 N. Church St., Spartanburg. **Ongoing** - Featuring works by Jim Creal. Hours: by appt. only or chance. Contact: 864/597-0879 or e-mail at ([jimcreal@mindspring.com](mailto:jimcreal@mindspring.com)).

**Mayo Mac Boggs Studio**, 1040 Seven Springs Road, Spartanburg. **Ongoing** - Limited edition bronze tablets, steel sculpture and computer graphics. Hours: by appt. only. Contact: 864/579-2938 or at ([www.myartweb.com](http://www.myartweb.com)).

**Wet Paint Syndrome, LLC**, Hillcrest Specialty Row (on the flip side), 1040 Fernwood-Glendale Rd., Suite 34, Spartanburg. **First Thur. of each month, 6:30-9pm** - "Pop-Up Gallery Nights." This is an open wall night to show and sell newer works. The Pop-Up event is intended to serve both the established and emerging artists in the region, as well as collectors who are looking for more affordable and the current edge of newer works. It is different every month, and we never know what will pop-up next! Contact: 864/579-9604 or at ([www.wetpaintsyndrome.com](http://www.wetpaintsyndrome.com)).

#### Summerville

**Downtown Summerville**, Short Central Ave., Summerville. **July 19, 5-8pm** - "Summerville Art Walk," held on third Thurs. For info contact Art Central at 843/871-0297 or at ([www.artcgallerytld.com](http://www.artcgallerytld.com)).



Work by Detta C. Zimmerman

**Art Central, Ltd.** Gallery, 130 Central Ave., Summerville. **Ongoing** - Featuring fine art originals, reproductions, one-of-a-kind jewelry and photography by local award winning artists. Representing Helen K. Beacham, Bette Lu Bentley-Layne, Mary Ann Bridgman, Renee Bruce, Christine Crosby, Judy Jacobs, Alexandra Kassing, Sarah Allums Kuhnell, Yvonne L. Rousseau, June Sullivan, Delaine Walters, Kathleen Wiley and Detta C. Zimmerman. Featuring consignment artists Wilma Cantey/pottery, Gary Nunn/woodworking, Guenter Weber/walking sticks and sweetgrass baskets and gourds by Sharon Perkins. Hours: Mon.-Sat., 10am-5pm. Contact: 843/871-0297 or at ([www.artcgallerytld.com](http://www.artcgallerytld.com)).

**Four Green Fields Gallery & Gifts**, 117-A Central Ave., Summerville. **Ongoing** - Featuring the new home of Silver Pail Pottery by potters Jillian and Robin Carway. The gallery showcases the work of 45+ American fine craft artists with an emphasis on local and South

*continued on Page 60*