

# NC Commercial Galleries

continued from Page 56

## Dillsboro

**The Golden Carp Gift Shop & Gallery**, Webster Street, Dillsboro. **Ongoing** - Featuring works by local and select American watercolorist, including works by artist-in-residence, John P. Miele. Also, baskets, pottery, fiber arts, and more. Hours: . Contact: 828/586-5477 or at ([www.thegoldencarp.com](http://www.thegoldencarp.com)).

**Village Studio Gallery**, 130 Front Street, Weaverville. **Ongoing** - Featuring works from regional artists including D. Morgan and Paula Vaughn and other national artists. Hours: Tue.-Sat., 10am-5pm. Contact: 828/586-4060.

## Durham

**Alizarin Gallery**, Suite 200, 119 West Main Street, near 5 points, Durham. **Ongoing** - The gallery's vision is to support local artists and provide a deeper connection with people who create art and the people who buy art. Alizarin seeks to help emerging artists as well as known regional artists selected by a juried board to exhibit at Alizarin. The mission of Alizarin is to provide a beautiful multi-use gallery for exhibits, events, and workshops, thereby increasing the exposure and opportunity for artists to become better known and sell their work. Hours: Tue.-Sat., 11am-6pm, by appt. and 3rd Fri. art walk. Contact: 919-434-5400 or at ([www.alizaringallery.com](http://www.alizaringallery.com)).

**Craven Allen Gallery**, 1106 1/2 Broad St., Durham. **Ongoing** - Featuring local artists in various mediums. Hours: Mon.-Fri., 10am-6pm & Sat., 10am-4pm. Contact: 919/286-4837 or at ([www.cravenallengallery.com](http://www.cravenallengallery.com)).

**Horizon Gallery**, 905 W. Main Street, Brightleaf Square, Durham. **Ongoing** - Featuring contemporary crafts including pottery, art glass, wood works, jewelry, garden art, kaleidoscopes and much more. Hours: Mon.-Sat., 11am-8pm & Sun., 1-6pm. Contact: 919/688-0313.

**LabourLove Gallery**, Golden Belt complex, Suite 2-130, 807 E. Main Street, Durham. **Ongoing** - Featuring works by a collective of North Carolina fine artists, designers, and musicians. Hours: Tue.-Sat., 11am-7pm. Contact: 919/373-4451 or at (<http://labourlove.com/>).

**Nancy Tuttle May Studio**, 806 Ninth St, Durham. **Ongoing** - Featuring works by Nancy Tuttle May. Hours: Mon.-Fri., 9am-1pm or by appt. Contact: 919/688-8852.

**Pleiades Gallery**, 109 East Chapel Hill Street, Five Points, Durham. **Ongoing** - The gallery promotes the beauty and mystery of visual art. Pleiades is a fine art gallery owned and operated by local artists who celebrate Durham's rich, diverse cultural energy. Pleiades welcomes new art appreciators as well as established collectors and strives to build strong relationships with our customers. We are a gallery that celebrates Durham artists and connects the various arts communities where we live. Hours: Wed.-Thur., 11am-6pm; Fri.-Sat., 11am-8pm; and Sun., 1-4pm. Contact: e-mail at ([info@pleiadesartdurham.com](mailto:info@pleiadesartdurham.com)) or at (<http://pleiadesartdurham.com/>).

**Supergraphic**, 601 Ramseur Street, Durham. **Ongoing** - Supergraphic is a creative art studio dedicated to providing work space, equipment and instruction for the production of fine art prints and print media. Hours: open by appointment and during Third Friday art walks. Contact: 919/360-4077 or at (<http://durhamsupergraphic.com/>).

**Through This Lens Photo Gallery**, 303 East Chapel Hill St, Durham. **Ongoing** - Featuring work of national and local artists. Books and postcards also for sale. Framing services. Hours: Tue.-Fri., 10:30am-5:30pm & Sat., 10:30am-2:30pm or by appt. Contact: 919/687-0250 or at ([www.throughthislens.com](http://www.throughthislens.com)).

ALTERNATE ART SPACES - Durham  
**Saladella Cafe**, 4201 University Drive, Durham. **Through July 31** - Featuring new landscapes by Nathalie Worthington. Hours: daily, 7am-9pm. Contact: 919/489-5776 or at ([www.saladella.com](http://www.saladella.com)).

## Fairview

**Willow Wisp Farm Studios Gallery**, 1615 Charlotte Hwy, Fairview. **Ongoing** - Featuring works by the instructors and students who have attended Willow Wisp Farm Studios. Hours: Fri.-Sat., 10am-5pm and Sun., 1-5pm. Contact: 888/590-4ART, 828/628-0401, or e-mail at ([art@willowwispfarmstudios.com](mailto:art@willowwispfarmstudios.com)).

## Gastonia

**Butler Studio Fine Art Gallery**, 171 W. Main St., located on the 2nd floor of the brick building next to the Park on Main, Gastonia. **Ongoing** - The gallery will continue to rotate in new works by Curt Butler. Hours: M, T, Th, F, 9am-5pm or by appt. Contact: 704/460-2386 or at ([www.butlerstudio.org](http://www.butlerstudio.org)).

## Greensboro Area

**Throughout Greensboro, first Fri. of the month, till 9pm** - "First Friday," featuring a gallery crawl of several gallery spaces in Greensboro. For further info ([www.uacarts.org](http://www.uacarts.org)).

**Ambleside Gallery**, 528 South Elm Street, Greensboro. **Ongoing** - Featuring works by artists from around the world. Among them are English artists Phil Hobbs, Kenneth Denton, and Matthew Hillier. American painters Bill Hosner, Tracy Reid, Richard Sedlack and Rich Nelson, and internationally recognized Chinese watercolorist Guan Weixing, plus many other noteworthy artists are included in the gallery collections. Hours: Mon.-Sat., 11am-6pm or by appt. Contact: 336/275-9844 or at ([www.amblesidearts.com](http://www.amblesidearts.com)).

**ArtWorks Collective Gallery**, 205 Lyndon Street, Greensboro. **Ongoing** - Featuring works by members of Lyndon Street ArtWorks center. Hours: Mon.-Sat., 10am-5pm & by appt. Contact: 336/370-0025 or at ([www.artworkscollective.com](http://www.artworkscollective.com)).

**Earthworks Gallery**, (formerly South Elm Pottery) 500 S. Elm Street, Greensboro. **Ongoing** - Featuring works by Molly Lithgo and Jim Rientjes, proprietors, focusing on NC made art. The primary focus will be pottery, but the gallery will also offer other gift items, such as jewelry, soap, note cards and candles; all made by North Carolina artisans. Hours: Tue.-Sat., 11am-6pm; Sun., noon-5pm & open until 9pm on each 1st Fri. Contact: 336/275-1202 or at ([www.earthworkspotterygallery.com](http://www.earthworkspotterygallery.com)).

**Elements Gallery**, 526 South Elm Street, Greensboro. **Ongoing** - The gallery is a co-op of over 30 local artists exhibiting a wide range of art in different mediums. Paintings, sculpture, pottery, glass art, wood turning, fiber art and mixed media is for sale. Hours: Tue.-Thur., 11am-6pm; Fri., 11am-9pm; Sat., 11am-6pm; & Sun., 1-5pm. Contact: 336/790-8703 or at (<http://elementsgallery.wordpress.com>).

**JMR Sculptures**, Gateway Center, 620 S. Elm Street, Suite 240, Greensboro. **Ongoing** - Featuring sculpture by Jay M Rotberg. Hours: Mon.-Fri., 10am-4:30pm or by appt. Contact: 336/389-0333 or at ([www.jmrsculptures.com](http://www.jmrsculptures.com)).

**Lost & Found Gallery**, 517 South Elm Street, Greensboro. **Ongoing** - Folk art, tribal art, textiles, and beads of the world. Hours: noon - 5:30pm, closed Wed. & Sun. Call ahead. Contact: 336/271-6954.

**The Art Shop**, 3900 W. Market St., Greensboro. **Ongoing** - Featuring works by Pino, Arvid, Park, Garmash, Sabzi, Hessam and others. We feature America's most collected artists. We also carry sculpture by Frogman (Tim Cotterill), Leon Bronstein & Paige Bradley and fine art glass by Randy Strong, John McDonald & Scott Bayless. Thomas Kinkade; original oil paintings, limited edition prints and posters. Hours: Mon.-Fri., 10am-6pm; Tue. & Wed till 7pm & Sat. 10am-5pm. Contact: 336/855-8500 or at ([www.artshopnc.com](http://www.artshopnc.com)).

**The Artery Gallery**, 1711 Spring Garden Street, Greensboro. **Ongoing** - Featuring works by David Thomas, Roy Nydorf, Bruce Shores, Matthew Micca, Lisa Woods, Bill Clubb, Jack Stratton, Erin Stesch, Vito Ciccone, Alex Forsyth, Martin Dunn, and more. Hours: Mon.-Thur., 10am-6pm; Fri., 10am-5pm; & Sat., 10am-4pm. Contact: 336/274-9814 or at ([www.arterygallery.com](http://www.arterygallery.com)).

**Tyler White O'Brien Gallery**, 307 State Street, beside Cafe Pasta at the intersection of Golden Gate & State Streets, Greensboro. **Ongoing** - Tyler White Gallery offers residential and corporate fine art consulting services. We will outline a personalized budget plan for your specific needs. We also offer art research, presentation and installation services. Whether you are an avid art collector or a first time purchaser, Tyler White Gallery will guide you every step of the way. Hours: Mon.-Fri., 11am-5pm & Sat., 11am-4pm. Contact: call Kathy O'Brien (owner) at 336/279-1124 or at ([www.tylerwhitegallery.com](http://www.tylerwhitegallery.com)).

**Uptown Artworks**, 1007 Arnold Street, located between E. Wendover Ave. and E. Bessemer

Ave., Greensboro. **Ongoing** - Primarily a "working artist studio," our 5,400 square foot facility has a large front gallery and currently houses 10 studios with room to build 7 more. Hours: Mon., 10am-4pm; Sat., 10am-2pm; Sun., 1-4pm or by appt. Contact: Joseph A. Wilkerson at 336/255-6345 or at (<http://www.UptownArtworks.org>).

**William Mangum Watercolors/Carey-Mangum Gallery**, 2182 Lawndale Dr., Greensboro. **Ongoing** - Original paintings, limited edition prints, miniature prints, posters and notecards by William Mangum. Hours: Mon.-Fri., 10am-5:30pm & Sat., 10am-3pm. Contact: 336/379-9200 or 800/887-5380.

**Winter Light Gallery & Art Studios**, 410 Blandwood Ave., corner of Blandwood Ave. and Spring Garden St., Greensboro. **Ongoing** - Featuring works by Kim Holleman, Vicki Johnson, Judy Meyler, Carol Meetze-Moates, Kathy Phillips, Steve Robinson, Carol Sams, Allie Scott, Phyllis Sharpe, Jane Smith, Stephanie Thomas, Steve Thomas and Jeanne Twilley. Hours: Mon., Tue., Thur., & Sat., 11am-2pm. Contact: 336/274-7372 or at ([www.winterlight-artists.com](http://www.winterlight-artists.com)).

ALTERNATE ART SPACES - Greensboro  
**Bliss & Co. Salon**, 238 S. Elm Street, Greensboro. **Ongoing** - Featuring an ever-changing exhibit of works by Charlotte and Erik Strom. Hours: Mon., 10am-6pm; Tue.-Fri., 10am-8pm; & Sat., 10am-6pm. Contact: 336/373-0299 or the Stroms at 336/691-8036 or e-mail to ([charlotteart@hotmail.com](mailto:charlotteart@hotmail.com)).

**Just Be**, 352 S. Elm Street, Greensboro. **Ongoing** - Just Be is a specialty boutique filled with handmade and unique items like jewelry, handbags, apparel, home décor and much more. Shop in the store or online at. Hours: Mon.-Thur, 10am-6pm; Fri.&Sat., 10am-8pm; and Sun., 1-5pm. Contact: 336/274-2212 or at ([www.onlyjustbe.com](http://www.onlyjustbe.com)).

## Greenville

**City Art Gallery**, 511 Red Banks Road, Greenville. **Ongoing** - The gallery features the works of established regional and national artists and craftspeople. The gallery offers an extensive collection of paintings, sculpture, ceramics, glass, drawings and photography. Hours: Mon.-Fri., 10am-6pm & Sat., 10am-4pm or by appt. Contact: 252/353-7000 or at ([www.CityArtGreenville.com](http://www.CityArtGreenville.com)).

**Strickland Art Gallery**, 817 Dickinson Ave., Greenville. **Ongoing** - The gallery specializes in art by North Carolina artists including Francis Speight, Sarah Blakeslee, Hobson Pittman and Claude Howell. Contemporary NC artists are also shown. Hours: Mon.-Tue., 10am-6pm and by appt. Contact: Barbours Strickland 252/561-7980 or at ([www.StricklandArtGallery.com](http://www.StricklandArtGallery.com)).

**Uptown Art Supply & Gallery**, a division of UBE, 529 S Evans Street, Greenville. **Ongoing** - Featuring works in a variety of media by local and regional artists. Hours: Mon.-Fri., 9am-6pm and Sat., 10am-5pm. Contact: 252/752-0688 or at ([www.uptownart.net](http://www.uptownart.net)).

## Hendersonville - Flat Rock

**A Show of Hands**, Arts of the Appalachians, 305 N. Main Street, Hendersonville. **Ongoing** - Featuring works by Appalachian artists including, blown glass, wood carving, jewelry, wooden spoons, boxes, etc., and works by over 60 potters. Hours: Mon.-Sat., 10am-5pm & Sun., 1-5pm. Contact: 828/698-7673.

**Carolina Mountain Artists**, 444 N. Main Street, Hendersonville. **Ongoing** - Featuring works by regional and local artists in every media. Hours: Mon.-Sat., 10am-6pm & Sun., 1-5pm. Contact: 828/696-0707.

**McCarter Gallery**, 451 N. Main St., Hendersonville. **Ongoing** - Featuring the working studio-gallery of landscape artist Alan McCarter, specializing in his acrylic paintings of the beauty of Nature in the Blue Ridge and Great Smoky Mountains. Also, featuring a display of new works monthly. And, watercolors and acrylics of Robbin McCarter and art glass by Czech glass master Igor Muller and Canadian Robert Held. Hours Mon.-Sat., 10:30am-5:30pm & by appt. Contact: 828/698-7117 or at ([www.mccarter-gallery.com](http://www.mccarter-gallery.com)).

**Narnia Studios**, 315 N. Main St., Hendersonville. **Ongoing** - Featuring works by local and regional artists in a variety of media. Hours: Mon.-Sat., 9:30am-6pm. Contact: 828/697-6393 or at ([www.narniastudios.com](http://www.narniastudios.com)).

**Silver Fox Gallery**, 508 N. Main Street, Hendersonville. **Ongoing** - Featuring contemporary fine art, hand-crafted artworks from the US only, from primarily regional artists. And, now Home Furnishings. Hours: Mon.-Thur., 10am-

6pm; Fri., 10am-7pm; Sat., 10am-6pm; Sun., noon-5pm. Contact: 828/698-0601 or at ([www.silverfoxonline.com](http://www.silverfoxonline.com)).

**The Conn-Artist Studios & Art Gallery**, 611 Greenville Hwy. (S.Main/Rte 225), Atha Plaza, Hendersonville. **Ongoing** - Fine art landscapes by Barbara Hipwell, mixed media by Constance Vlahoulis and works by other area artists, including Vintage Finds Art Necklaces by Elizabeth. Hours: Wed. & Fri., 10am-5pm, & Sat., 10am-4pm, (most Tues & Thurs noon-5-call first). Contact 828/329-2918 or at ([www.Conn-Artist.com](http://www.Conn-Artist.com)).

**The Portrait Source**, Hwy. 225 S., along "Little Rainbow Row", Flat Rock. **Ongoing** - Representing the nation's finest portrait artists and we help clients find the perfect artist for both families and the corporate world. We have expert sales consultants throughout the country. Visit our unique gallery where we have a continuing display of sample paintings. Hours: Mon.-Sat., 10am-4pm or by appt. Contact 800/586-6575 or at ([www.theportraitsource.com](http://www.theportraitsource.com)).

## High Point

**J.Gallery at JH Adams Inn**, 1108 North Main Street, High Point. **Ongoing** - Featuring works by artists from across the country with an emphasis on North Carolina artists. Hours: Mon.-Fri., 9am-5pm, but it is suggested you make an appointment. Contact: Julie Delgaudio at 336/8478672 or by e-mail at ([phonefrnz@aol.com](mailto:phonefrnz@aol.com)).

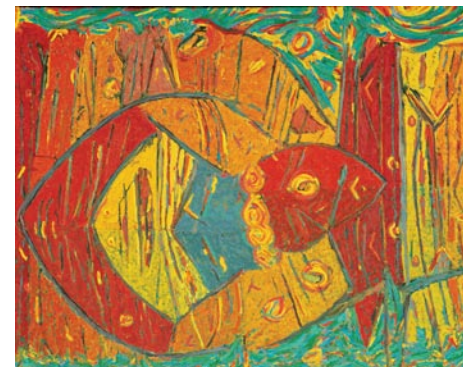
**JK Gallery**, 342 North Wrenn Street, High Point. **Ongoing** - Featuring fine art photography by Jim Koch. Exhibiting black & white original silver gelatin prints and interpretations of color, architectural images, landscapes and portraits. Hours: M.-F., 9am-5pm. Contact: 336/883-2370 or at (<http://www.jk-gallery.com/>).

**Kelly Brooke Pottery & Gallery**, 709 W. Lexington Ave., inside of DeBeen Espresso, High Point. **Ongoing** - All of my work is wheel thrown and/or hand built from a porcelain clay body made right here in North Carolina. I use a centuries old style of surface decoration known as sprigging where I individually apply hand carved dragonflies or flowers to the leather hardened pots. Choose from mugs, bowls, vases, honey pots, teapots, plates, platters, etc. All of the pottery is food safe, microwave, and dishwasher safe and very durable. Hours: daily 8am-8pm. Contact: 336/889-2107 or at ([www.kellybrookepottery.com](http://www.kellybrookepottery.com)).

## Hillsborough

**Downtown Hillsborough, July 31, 6-9pm** - "Last Fridays Art Walk." The Hillsborough Arts Council invites everyone to visit local galleries and artist studios in historic downtown Hillsborough including: The Gallery at the Hillsborough Arts Council, Melissa Designer Jewelry, ENO Gallery, Hillsborough Artists Cooperative and The Skylight Gallery, Coldwell Banker Howard Perry and Walston, Cup A Joe, Callaway Jewelry & Spiral Studios, Sovero Art Gallery & Studio, Hillsborough Gallery of Arts, and The Depot at Hillsborough Station. For further info visit ([www.lastfridaysartwalk.org](http://www.lastfridaysartwalk.org)).

**Callaway Jewelry & Spiral Studios**, 115 North Churton Street, Hillsborough. **Ongoing** - Offering beautiful handmade jewelry in sterling silver and gold by metalsmiths/designers Catharine Callaway and Jeannine Rogers. Hours: Mon.-Fri., 10am-6pm & Sat., 10am-4pm. Contact: 919/732-2013 or at (<http://www.sterlingspirals.com/>).



Work by Marvin Saltzman

**ENO Gallery**, 100 South Churton Street, Hillsborough. **Through Aug. 17** - "The Abstract Landscapes of Marvin Saltzman". Saltzman's distinguished career spans more than 60 years. Born in Chicago, IL, in 1931, Saltzman studied at The University of Chicago and The Art Institute of Chicago from 1954 to 1956. He received his Master of Fine Arts degree from the University of Southern California in 1959. **Ongoing** - The gallery represents exceptional contemporary emerging and established artists for both first time buyers and discerning collectors. Eno Gallery is a unique and intimate exhibition space. We offer work from artists of exceptional

continued on Page 58