

# Colorful Language

Nell Chandler  
Ali Givens  
Michele Yellin

July 25 - August 21

Nell Chandler



HILLSBOROUGH  
GALLERY  
of  
ARTS

121 N. Churton St.,  
Hillsborough, NC  
919-732-5001  
HillsboroughGallery.com



Ali Givens

Opening Reception  
Fri, July 29 6-9



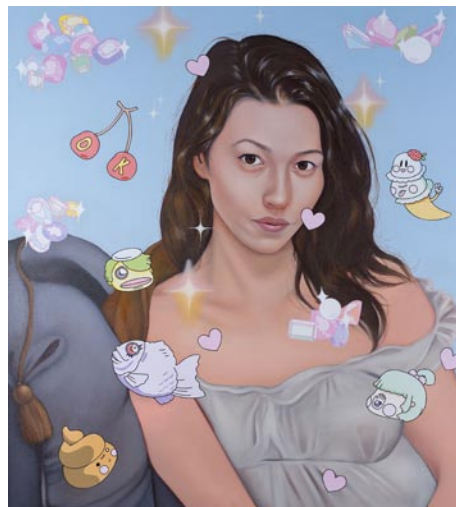
Michele Yellin

ographer in France from 1943 to 1945. He returned to Mary Baldwin College, where he continued to teach until his retirement in 1967. For further information check our SC Institutional Gallery listings, call the Museum at 864/271-7570 or visit ([www.gcma.org](http://www.gcma.org)).



"Moonrise over Hernandez, New Mexico," 1941, Photograph by Ansel Adams ©2015 The Ansel Adams Publishing Rights Trust

The Reynolda House Museum of American Art in Winston-Salem, NC, is presenting *Ansel Adams: Eloquent Light*, on view in the Mary and Charlie Babcock Wing Gallery, through July 17, 2016. Ansel Adams (1902-84), perhaps the best-known photographer in American history, developed a system for creating luminous, vivid landscape photographs in sharp contrasts of black and white. He then printed his film negatives with meticulous attention to craft. Adams's manner of framing and capturing both magnificent, large-scale landscape formations, and small, exquisite natural objects created icons of the American wilderness. For further information check our NC Institutional Gallery listings, call the Museum at 336/725-5325 or visit ([www.reynoldahouse.org](http://www.reynoldahouse.org)).



Work by Naomi Nakazato

Greenville Center for Creative Arts in Greenville, SC, will present two new exhibits including: *Telling Her Story*, featuring works by eleven female artists and *The Story Within*, an exhibit of artwork created by 10 young women from the Smith House. Both exhibitions will be on view through July 27, 2016. Each of eleven artists in the exhibit *Telling Her Story*, shares her feminine perspective. The show includes the works of: Alice Ballard, Mandy Blankenship, Camela Guevara, Louisa Pyle Kirk, Michele Maynard, Naomi Nakazato, Emily Neal, Michelle Berg Radford, Valerie Zimany and Suzanne Zoole. A special feature of the exhibit includes a large grouping of works by April Harrison, who re-creates precious memories of love from her childhood through rich tapestries of torn papers, found objects and paint. For further information check our SC Institutional Gallery listings, call the Center at 864/735-3948 or visit ([www.artcenter-greenville.org](http://www.artcenter-greenville.org)).



Work by Henry Taylor

Mann-Simons Site in Columbia, SC, will present *Route to (re)settlement*, featuring works by Rashid Johnson, Henry Taylor, Michi Meko, Victoria-Idongesit Udondian, and Fletcher Williams, III, on view through Aug. 1, 2016. Historic Columbia, Palmetto Curatorial Exchange,

and Connelly & Light are pleased to announce the launch of *Route to (re)settlement*, a four-year exhibition series examining narrative shifts surrounding Black communities in South Carolina - a state which has served as the major gateway between Africa and "African America" - and the permeation of these narratives and related multifaceted heritage throughout America. For further information check our SC Institutional Gallery listings, call Historic Columbia at 803/252-1770 ext. 23 or to schedule a tour, e-mail to ([reservations@historiccolumbia.org](mailto:reservations@historiccolumbia.org)).



Bill Traylor, "Blue Rabbit Running", 1939-42, poster paint and pencil on cardboard, 9 x 11 7/8 in. The William Louis-Dreyfus Foundation.

The Weatherspoon Art Museum at the University of North Carolina at Greensboro, NC, is delighted to present *Inside the Outside: Five Self-Taught Artists from the William Louis-Dreyfus Collection*, on view through Sept. 4, 2016. The enigmatic - and often humorous and dramatic - works in this exhibition survey the production of five highly gifted artists: James Castle, Thornton Dial, Nellie Mae Rowe, Bill Traylor, and Willie Young. Prior labels of "outsider" and "visionary" have given way to the more appropriate term, "self-taught" art, though the genre remains one of the most intriguing in modern and contemporary art. Each of these artists has examined an idiosyncratic personal reality to create works full of imaginative and visual power, works that stand beside the canon of the mainstream art world. For further information check our NC Institutional Gallery listings, call the Museum at 336/334-5770 or e-mail to ([weatherspoon@uncg.edu](mailto:weatherspoon@uncg.edu)).



LEGO Peacock by Sean Kenney

Brookgreen Gardens, near Murrells Inlet, SC, is presenting *Nature Connects: LEGOS@ Bricks Sculpture*, on view in Brookgreen's Native Wildlife Zoo, through Sept. 5, 2016. In celebration of its 85th Anniversary, Brookgreen Gardens will host 12 larger-than-life LEGO® brick sculpture installations. Created by Sean Kenney, renowned artist and children's author, *Nature Connects* is an award winning exhibit currently touring the country. Made from almost 400,000 LEGO® bricks, the sculptures bring nature to life with a 6-foot tall hummingbird hovering over a trumpet flower, a deer family made from 48,000 bricks, a giant tortoise, a 7-foot long giant dragonfly, and more. For further information check our SC Institutional Gallery listings, call the Gardens at 843/235-6000 or visit ([www.brookgreen.org](http://www.brookgreen.org)).

The Mint Museum Uptown in Charlotte, NC, is presenting *Here & Now*, marking the first survey exhibition of photography drawn solely from the Mint's permanent collection, on view through Sept. 18, 2016. The exhibition comprises approximately 215 of the Mint's most stunning and provocative photographs. Including recent acquisitions and many never-before-seen treasures alongside signature works, *Here & Now* offers a fresh perspective on an exciting, diverse, and burgeoning area of strength within the Mint's collection. Most of the works in the Mint's collection were produced after the founding of the museum in 1936, 80 years ago. While relatively modest in scale, the Mint's collection boasts exceptional photographs taken around this time by

continued on Page 32

## FRANK Gallery in Chapel Hill, NC

continued from Page 30

ative recovery."

Bowen is the coordinator of the Brushes with Life Arts Program, with the Center for Excellence in Community Mental Health.

FRANK gallery is a 501(c)(3) nonprofit operated by member artists of the Franklin Street Arts Collective, with support from community leaders and art lovers.

The mission of the Franklin Street Arts Collective is to support the arts community of Chapel Hill and the region, strengthen community appreciation of the arts through educational outreach, and promote Chapel Hill and North Carolina as a major arts destination. FRANK offers workshops, salons, and innovative programs that reach out to diverse groups within the community.

For further information check our NC Institutional Gallery listings or visit ([www.frankisart.com](http://www.frankisart.com)).



Work by Lolette Guthrie

## Some Exhibits That Are Still On View

Our policy at *Carolina Arts* is to present a press release about an exhibit only once and then go on, but many major exhibits are on view for months. This is our effort to remind you of some of them.

The Greenville County Museum of Art in Greenville, SC, is presenting *Horace Day in South Carolina*, on view through July 10, 2016. Born in China to American missionary parents, Horace Talmage Day (1909 - 1984) graduated from the Shanghai American School and began his formal art training in 1927 at the Art Students League in New York. In 1936, after serving as artist-in-residence at Manhattan's Henry Street Settlement, Day accepted the position as the first director of the Gertrude Herbert Institute of Art in Augusta, GA. Five years later, the artist joined



Horace Day (1909 - 1984) "Ionic Facade" 1955, watercolor on paper. From the Collection of the Greenville County Museum of Art.

the faculty of Mary Baldwin College in Staunton, VA. During World War II, Day served as an ambulance driver and cartographer

continued above on next column to the right