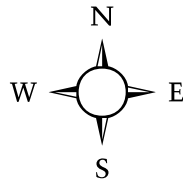
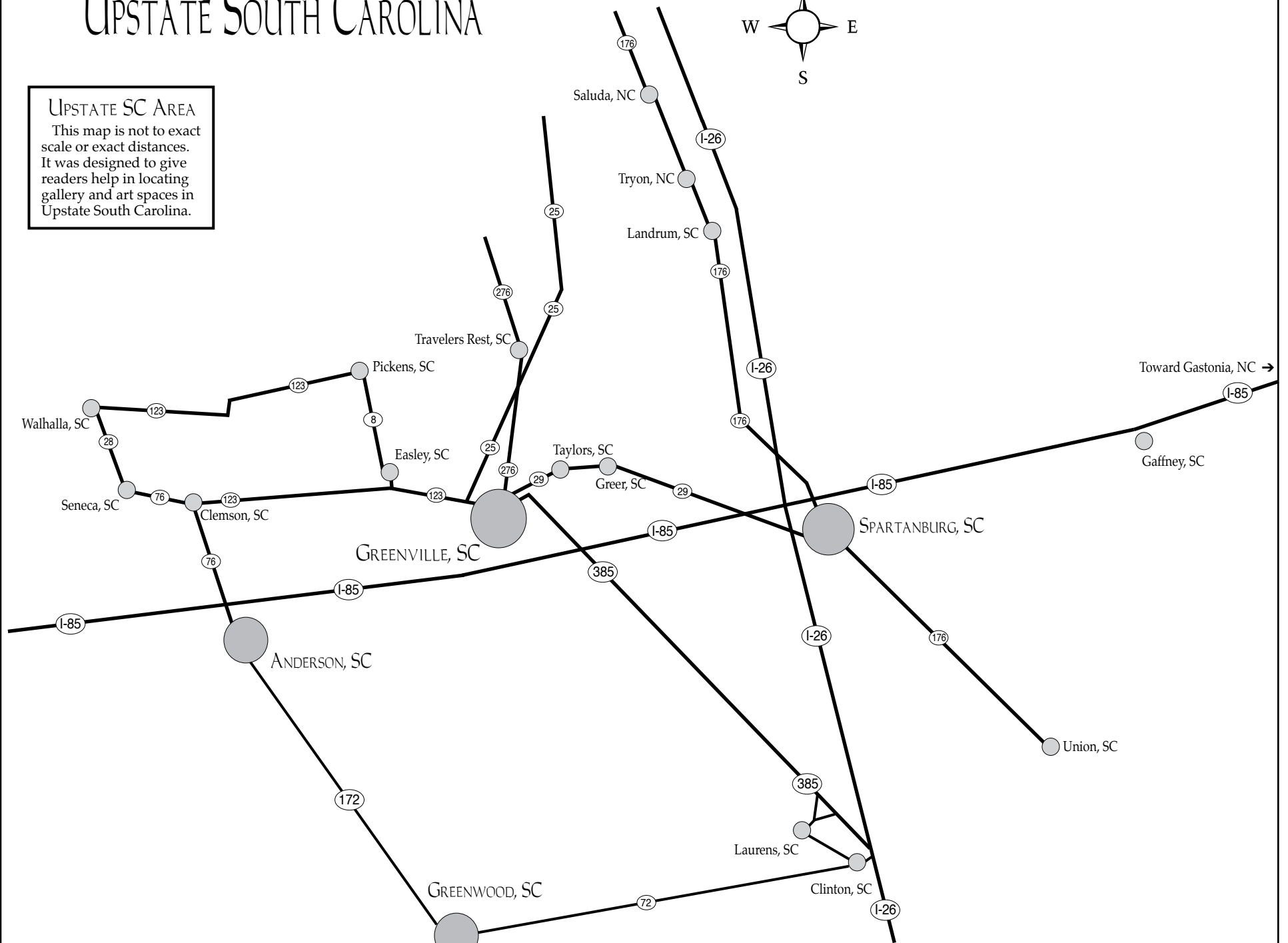


# UPSTATE SOUTH CAROLINA



## UPSTATE SC AREA

This map is not to exact scale or exact distances. It was designed to give readers help in locating gallery and art spaces in Upstate South Carolina.



## Main & Maxwell in Greenwood, SC

continued from Page 8 / [back to Page 8](#)

Creative Economies Program in Edgefield, SC. Taft feels that it was an amazing in-depth instruction into ceramics and he continues to work and evolve with his ceramic work.

Taft currently produces work and teaches classes at Edgefield Clay Center in Edgefield and his pieces are often wood fired in the town's historic ground hog kiln. In addition, he works in mid-fire stoneware producing both functional and decorative pieces. Most recently he has finished a series of wheel thrown and altered pig jugs that will be on display at the gallery in conjunction with the annual Festival of Discovery BBQ and Blues held in Greenwood, SC, from July 12 - 14.

For further information check our SC Commercial Gallery listings, call the gallery at 864/223-6229 or visit ([www.mainandmaxwell.com](http://www.mainandmaxwell.com)). For more



Work by Robert Taft

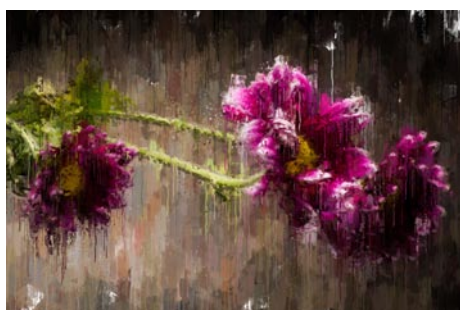
information about the Festival of Discovery visit ([www.festivalofdiscovery.com](http://www.festivalofdiscovery.com)).

## West Main Artists Co-op in Spartanburg, SC, Features Works by Melissa McElhiney and Eugene Johnson

The West Main Artists Co-op in Spartanburg, SC, is presenting *Through the Looking Glass*, featuring works by ceramicist Melissa McElhiney and photographer Eugene Johnson, on view through July 14, 2018.

"There seems to be some disagreement as to whether or not photography is a form of art or simply a snapshot in time," Johnson explained. "This exhibit tries to address that very question through both works taken directly from the camera, as well as photography used as the base for images crafted through digital means. I want people to come away from this exhibit with an appreciation of the finished work."

McElhiney said the exhibit was inspired by "A play off of various words, thoughts



Work by Eugene Johnson

and ideas. We desired to break from our norms in order to push and expand our skills and our own thoughts regarding our art. People can expect to see a few of my favor-

[continued on Page 13](#)

## LUKE ALLSBROOK A SENSE OF PLACE



*Morning on Melissa's Beach*, 2018

oil on canvas

42 x 62 inches

JUNE 7 - JULY 21, 2018

HAMPTON  GALLERY LTD

3110 Wade Hampton Blvd. Suite 10 Taylors, SC 29687

Hours: Tuesday - Friday, 1 - 5 pm; Saturday, 10 am - 5 pm

[www.hamptoniigallery.com](http://www.hamptoniigallery.com) • email: [sandy@hamptoniigallery.com](mailto:sandy@hamptoniigallery.com)  
864-268-2771