

NC Commercial Galleries

continued from Page 49

Contact: 910/575-8222.



Work by Bonnie Becker

Sunset River Marketplace, 10283 Beach Drive, SW, Calabash. **Through Aug. 14** - "2019 Watercolor Society of North Carolina Traveling Exhibition". The exhibition consists of 30 paintings, which were chosen from the Watercolor Society of North Carolina annual show. There will also be three additional works recently selected from the organization's permanent collection. The exhibition began its travels in Elizabeth City, NC; continuing to Williamston, NC; and New Bern, NC before arriving at Sunset River Marketplace in Calabash. **Through Aug. 14** - "Red Hot Summer". Red is the color of passion, adventure, heat and sunsets. Often an artist will use it for a spontaneous pop of color and sometimes a painting simply radiates red. This group show features work in acrylic, oil, pastel, and other media.

Ongoing - A unique eclectic gallery showcasing over 200 local artists in virtually every medium. Enjoy gourmet coffee, tea and treats as you stroll through the 10,000 square-foot space. Art classes and custom framing are offered on-site. Hours: Mon.-Sat., 10am-5pm. Contact: 910/575-5999 or at (www.SunsetRiverMarketplace.com).

ALTERNATE ART SPACES - Ocean Isle Beach **Silver Coast Winery**, 6680 Barbeque Rd., Ocean Isle Beach. **Ongoing** - Art gallery featuring local artists, David McCune, Steven Schuman, and Suzanne C. Hunady, as well as daily tours, tastings and the art of wine making. Hours: Mon.-Sat., 11-6pm & Sun. 12-5pm. Contact: 910/287-2800 or at (www.silvercoastwinery.com).

Cary

Stonehaven Jewelry Gallery, 101 Ledge Stone Way, Stonecreek Village Shopping Center, corner of Davis Drive and High House Rd., Cary. **Ongoing** - Featuring custom design, jewelry repair, original oil paintings, limited edition prints, and fine art glass. Hours: Mon.-Fri., 10am-6pm & Sat., 10am-5pm. Contact: 919/462-8888 or at (www.stonehavenjewelry.com).

The Nature of Art Gallery, 106-D Colonades Way, Waverly Place Shopping Center, Cary. **Ongoing** - Featuring whimsical and eclectic artworks for interiors and gardens with a native flair. Hours: Mon.-Sat., 10am-6pm, except Wed. till 9pm. Contact: 919/859-6004.

Village Art Circle, 200 South Academy Street, Cary. **Ongoing** - Our gallery is located in Ashworth Village in historic downtown Cary, behind Ashworth Drug in the plaza, corner of Academy and Chatham Streets. Parking is available in the plaza in front of the gallery as well as on Chatham and Academy Streets, and on Waldo Street. Hours: Wed.-Sat., 11am-5pm. Contact: (www.villageartcircle.com).

Celo

Toe River Crafts, 6274 on Hwy. 80 South, 7 miles north of the Blue Ridge Parkway, Celo. **Ongoing** - Providing a showcase for handmade objects in many media such as clay, wood, fiber, glass, paper, metal, jewelry, photography, printmaking, and painting. Hours: e-mail for hours. Contact: e-mail at (toerivercrafts@gmail.com) or at (<http://www.toerivercrafts.com/>).

Chapel Hill - Carrboro

Chapel Hill/Carrboro Art Walks - second Friday of each month from 6-9pm. Info at (www.2ndfridayartwalk.com).

Animation and Fine Art Galleries, University Mall, 201 S Estes Dr., Chapel Hill. **Ongoing** - Featuring contemporary works of art and animation art. Hours: Mon.-Sat., 10am-6pm. Contact: 919/968-8008 or at (www.animationandfineart.com).

Black Mountain Gallery, 1800 #9 E. Franklin Street, Eastgate Shopping Center, Chapel Hill. **Ongoing** - Featuring handwrought designer jewelry by artisans from throughout the United States. Hours: Mon.-Sat., 10am-6pm. Contact: 919/967-8101.

Blackwood Station Gallery, 6113 Hwy. 86N., Chapel Hill. **Ongoing** - Featuring functional & fine art, sculpture and fine art prints. Hours: Tue.-Fri., 11am-7pm; Sat., 10am-6pm, & Sun., noon-6pm. Contact: 919/968-1360.

Cameron's, University Mall, Chapel Hill. **Ongoing** - Featuring contemporary American crafts and pottery, folk art and functional art objects. Hours: Mon.-Sat., 10am-9pm & Sun., 1-6pm. Contact: 919/942-5554.

Chapellier Fine Art, 105 Arlen Park Drive, Chapel Hill. **Ongoing** - Fine, investment quality 19th & 20th century American art. Hours: Mon. - Fri. by appointment. Contact: 919/967-9960 or at (www.citysearch.com/rdu/chapellier/).

Dirt Road Gallery, 8218 Bright's Way, Chapel Hill. **Ongoing** - Featuring handcrafted items - including paintings, carvings, molas, textiles & fabrics, ceramics, beads and jewelry from West Africa, the Middle East, Central America, and the US collected over years of traveling. Hours: Sat. & Sun., 11am-6pm & by appt. Contact: 919/933-6999 or at (www.dirtroadgallery.net).

N.C. Crafts Gallery, 212 W. Main St., corner of Weaver and West Main Sts., Carrboro. **Ongoing** - Offering a wide assortment of items handcrafted by North Carolina artisans. You'll find contemporary and traditional pottery, blown glass, wood, jewelry, metalwork, toys, folk art, garden sculpture, kaleidoscopes, baskets, fiber art and more. The Gallery currently carries the work of more than 500 North Carolinians, from the mountains to the shore. The gallery also hosts two shows a month. Shows begin the first of each month and give the featured artist the opportunity to showcase an entire body of work. Hours: Mon.-Sat., 10am-6pm & Sun., 1-4pm. Contact: 919/942-4048 or at (<http://nccraftsgallery.com/>).

Studio 91 Fine Art Gallery, Meadowmont Village, Chapel Hill. **Ongoing** - Featuring works by Jean Abadie, Thomas Arvid, Dimitri Danish, Michael Flohr, Edward Lewis, and Fabian Perez. Hours: Mon.-Thur., 10am-6pm; Fri., 10am-8pm & Sat., 10am-5pm. Contact: 919/933-3700.

Charlotte Area

North Davidson Street Arts District Gallery Crawl - From 6-9pm on the 1st & 3rd Fridays of each month.

Uptown Gallery Crawl - From 6-8pm on the 1st Friday of each month.

SouthEnd Gallery Crawl - From 6-9pm on the 1st Friday of each month.

Allison Sprock Fine Art, 600 Queens Rd., the gallery shares space with The Nichols Company in one of Myers Park's oldest houses, Charlotte. **Ongoing** - The gallery represents many well-known artists from all over the world. Some of the featured artists are very famous; others are emerging including: Andre Bludov, Constantin Chatov, Marc Chatov, Roman Chatov, Gee Gee Collins, Larry Davis, Noah Desmond, Margaret Dyer, Sabre Esler, Stephen Fry, Benjamin Hollingsworth, Linda James, Dimitri Kourouniotis, Stan Mullins, Anne Neilson, Becky Ollinger, Spencer Reid, Felice Sharp, Tracy Sharp, Louis St. Lewis, Elizabeth Stehling, Harry Stewart, Cate Wagoner, Karen Weihs, Alice Williams, Sean Williams, and Kathy Wochele. Hours: Mon.-Sat., 10am-6pm. Contact: 404/274-5829 or visit (www.allisonsprockfineart.com).

Anne Neilson Fine Art, to Shops of Morrison in SouthPark Charlotte. **Ongoing** - The gallery represents over 30 esteemed national and international artists, as well as works by noted painter and author Anne H. Neilson. The gallery is an outgrowth of Neilson's ever-growing popu-

larity sparked by her Angels Series paintings and book. Hours: Mon.-Fri., 10am-5pm; Sat., 11am-3pm & by appt. Contact: 980/253-9566 or at (<http://www.anneneilsonfineart.com/ourgallery>).

Art House Studios, 3103 Cullman Ave., off 36th Street in the NoDa District, Charlotte. **Ongoing** - Featuring a complex of working studios by area artists. Hours: during Gallery Crawls and by appt. Contact: 704/577-4587 or e-mail at (arthouse_noda@earthlink.net).

Artists' Atelier Carolina, located in the Pentes Artworks Gallery & Studios bldg., 1346 Hill Rd., Charlotte. **Ongoing** - Featuring works by Jim Fales, Fay M. Miller, Jack Pentes, Betty G. Robinson, Gregory Weston, and Peggy Hutson Weston. Hours: by appt. Contact: 704/552-6200.

Ben Owen Pottery Gallery, inside The Ritz-Carlton, Charlotte, 201 East Trade Street, Charlotte. **Ongoing** - The gallery offers 75-100 one-of-a-kind pieces of Ben Owen III pottery, with prices beginning at \$45. Works will range from pots, vases, jars, bowls and platters to major showpieces and spectacular larger works of art. All items are hand-created by Ben Owen, who also will make special appearances at The Ritz-Carlton, Charlotte for 2011 art weekends and art demonstrations. Hours: open daily from 9am-6pm. Contact: 704/547-2244 or at (<http://www.ritzcarlton.com/en/Properties/Charlotte/Default.htm>).

Charlotte Fine Art Gallery, 7510 Pineville-Matthews Road, located in South Charlotte's Carmel Village at the corner of Pineville-Matthews and Carmel Road, Charlotte. **Ongoing** - Original works of art from award-winning artists across the United States, as well as the Carolinas. Nationally and internationally-recognized artists in 2-and 3-dimensional fine art. Specializing in a wide array of media and styles represented: Representational, Impressionism, Expressionism, Abstraction / Paintings, Sculpture, Prints. Consulting Services for individual and corporate clients, as well as, private event opportunities. Hours: Tues 10am-4pm; Wed., 10am-9pm; Thur.-Sat., 10am-6pm or by appt. Contact: call 704/541-0741 or at (www.CharlotteFineArt.com).

Coffey and Thompson Gallery, 109 W. Morehead @ S. Tryon St., Charlotte. **Ongoing** - Oils by Richard Plasschaert, etchings by Gordon Allen, prints by Ralph McDonald, Bev Doolittle, G. Harvey, Mort Kunstler, Don Troiani and Charles Frace. Hours: Mon.-Fri., 8:30am-5:30pm & Sat., 10am-2pm. Contact: 704/375-7232 or at (www.coffeyandthompson.com).

Dilworth Artisan Station, 118 E. Kingston Avenue, Charlotte. **Ongoing** - Dilworth Artisan Station houses more than two dozen fine artists that maintain active studios at the Dilworth Artisan Station, a center for arts for more than the last two decades. Contact: (www.dilworthartisan.com).

Elder Gallery of Contemporary Art, 1520 South Tryon Street, Charlotte. **Ongoing** - We are thrilled to be the first gallery in North Carolina to offer fine glass art by nationally recognized artists Jon Kuhn, David Patchen and Marlene Rose. The gallery is also excited to introduce new contemporary two-dimensional artists, including Charles Williams and Grant Drumheller. Hours: Tue.-Fri., 11am-6pm & Sat., 11am-5pm. Contact: 704/370-6337 or at (www.eldergallerycit.com).

Foster's Frame & Art Gallery, 403-A Old Statesville Rd. N, Huntersville. **Ongoing** - Featuring original paintings by local artists: Nellie Ashford - folk art, Edna Barker - landscape, Andrea Cook - Abstract/Fabric, Evelyn Kadir, Abstract/Musical, Carolyn Saine, landscape. Hours: Mon.-Fri., 10am-4pm, Sat. 10am-4pm. Contact: 704-948-1750.

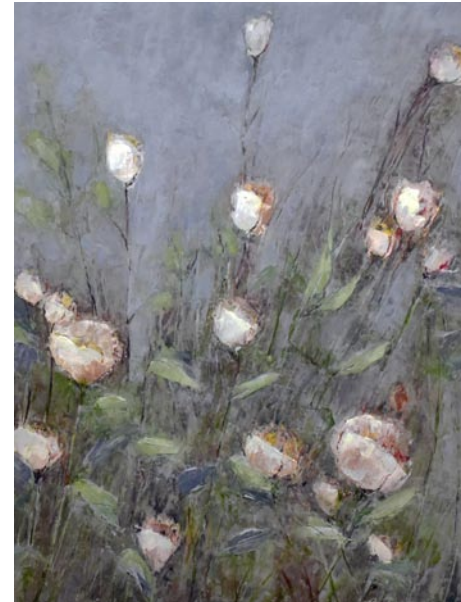
Harris Holt Gallery, 1717 Kenilworth Avenue, Charlotte. **Ongoing** - Featuring watercolors, oil paintings and limited edition prints by Harris Holt. Hours: Mon.-Fri., 9:30am-5:30pm. Contact: 704/373-9090 or at (www.fostersframeandartgallery.com).

Hodges Taylor Art Consultancy 118 East Kingston Avenue, Suite 25, Charlotte. **Ongoing** - The gallery represents contemporary artists of the southeast, including paintings, prints, photographs and sculpture. The gallery offers a public venue in uptown Charlotte for viewing artwork and serves as art consultants for collectors and businesses. Hours: Tue.-Sat., by appt. only. Contact: 704/334-3799 or at (www.hodgestaylor.com).

House of Africa Gallery, 1215 Thomas Avenue, Charlotte. **Ongoing** - Featuring the area's largest selection of African art, including: masks, statues, carved artwork, handmade jewelry, paintings, plus traditional African musical instruments. Hours: Mon.-Sat., 11am-8pm. Contact: 704/376-6160.

Hughes Gallery, 2015 Ayrley Town Blvd. @ N Kings Parade, Ste. 107-c, Charlotte. **Ongoing** - The gallery is a modern art gallery with a focus on sculpture, installation, works on paper, photography and painting. Hours: Mon.-Sat., 10am-6pm. Contact: 704/492-9934 or at (www.hughesgallery.artlogsites.com).

Jerald Melberg Gallery, 625 South Sharon Amity Road, near corner of Providence Road, next to restaurant Hotel Charlotte, Charlotte. **Through July 20** - "Raúl Díaz: Reflection". Jerald Melberg Gallery is pleased to present a solo exhibition of recent paintings and sculpture by Córdoba, Argentina artist Raúl Díaz (b. 1952). In this body of work, he continues the exploration of boats as a metaphor for the journey of life. He has also begun incorporating cones as a symbol of how one's perspective and influence can expand exponentially throughout life. **Ongoing** - The gallery represents artists from all regions of the United States, Argentina and Spain, exhibiting paintings, prints, and sculpture. The gallery features solo and group exhibitions as well as consulting services for individual collectors, corporations and museums. Hours: Mon. - Sat., 10am-6pm. Contact: 704/365-3000 or at (www.jeraldmelberg.com).



Work by Elizabeth Davant

New Location

Lark & Key, 700 East Blvd, Ste 1 (Dilworth), Charlotte. **July 1 - 31** - "Bloom," works by a mixed media group featuring botanical and floral inspired art. Participating artists include Katrina Berg, Elizabeth Davant, Kim Ferreria, Diane Hoeptner, Duy Huynh, Judy Klich, Eleanor Miller and Vicki Sawyer. Artwork is complimented by ceramics from Asta Bublione, Kristin Keiffer and Jennifer Mecca, with jewelry by Marian Miller. **Ongoing** - Lark & Key showcases a variety of artwork, pottery, jewelry from local and national artist. Hours: Wed.-Fri., 10am-3pm, and a once a month Open House every Second Saturday 10am-3pm and Second Sunday, noon-3pm. Contact: 704/334-4616.

Maddi's Gallery, 1530 East Boulevard, Charlotte. Named "Top Retailer of American Craft in the United States for 2009" by The "Niche Magazine". **Ongoing** - Featuring fine contemporary craft by more than 160 national artists; specializing in Southern folk art with paintings, pottery and carvings by many of the South's most notable folk artists. Hours: Mon.-Fri., 10am-7pm; Sat., 10am-6pm & Sun. noon-5pm. Contact: 704/332-0007.

Nancy Couick Studios and Gallery, 10100 Park Cedar Dr., Suite 188, Charlotte. **Ongoing** - Gallery features works by New Orleans artist: Michael Smiraldo, regional artists: Nancy Smith Couick, Sharron Burns, Susan Hinrichs, Charlotte Fairman, Mary Ellen Wilkerson, Vivian Carroll and others. Hours: Mon.-Fri., 10am-5pm (except Tues. 1-9pm) and Sat. & Sun. by appt. Contact: 704/541-6944 or at (www.nancycouick.com).

Picture House Gallery, 1520 E. 4th Street, Charlotte. **Ongoing** - Featuring Frederick Hart sculpture, works by Jamali; paintings, original art, sculpture, art glass, and fine custom framing. Hours: Mon.-Fri., 10am-6pm & Sat., 10am-3pm. Contact: 704/333-8235 or at (www.PictureHouse-Gallery.com).

Providence Gallery, 601-A Providence Rd., in the Manor Theatre Shops, in Myers Park, Charlotte. **Ongoing** - Representing over 30 regional and national fine art painters working in a variety of mediums and styles ranging from traditional compositions to representational and non-representational abstractions. Gallery artists include Luz Aveyra, Todd Baxter, Travis Bruce Black, Kathy Caudill, Jim Celano, Kathy Collins, Steve Dininno, Lita Gatlin, Anne Harkness, Janine Medlin, P. Basille Nikitchenko, Ada Offerdahl, Sean Parnell, Ann B. Rhodes, Sheryl Stalnaker, Tres Taylor, Diane Virkler, Andres Vival, Dru Warmath & Rod Wimer. Hours: Mon.-Fri., 10am-5pm & Sat., 10am-2pm.

continued on Page 51