

SC Commercial Galleries

continued from Page 40

Reinert Fine Art Gallery, 179 King Street, Charleston. **Ongoing** - Reinert Fine Art showcases the contemporary impressionist works in oil by Rick Reinert and more than 40 other artists offering their unique and diverse styles. Hours: daily from 9am-5pm. Contact: call 843/694.2445 or at (www.rickreinert.com).

Revealed Art Gallery, 119-A Church Street, Charleston. **Ongoing** - Revealed is a contemporary art gallery in Charleston, SC. Located in the French Quarter, it features a vibrant compilation of artists that vary in style and medium. Revealed's collection offers a range of creative gems for both locals and visitors to discover. All are welcome and encouraged to explore this new and unique space. Hours: Mon.-Sat., 11am-5pm & Sun. noon-4pm. Contact: 843.872.5606 or at (www.revealedgallery.com).

Rhett Thurman Studio, 241 King St., Charleston. **Ongoing** - Featuring works by Rhett Thurman. View the video "Celebrating Rhett Thurman: Painting in Charleston for 50 Years!" at (<https://www.youtube.com/watch?v=wJA2XNBPqvA&feature=youtu.be>). Hours: by appt. only. Contact: 843/577-6066 or at (RhettThurmanStudio@gmail.com).

Robert Lange Studios, 2 Queen St., Charleston. **Ongoing** - Featuring works by Ali Cavanaugh, Megan Aline, Robert Lange, Nathan Durfee, Kerry Brooks, Jessica Dunegan, Fred Jamar, Michael Moran, Amy Lind, Adam Hall, Joshua Flint, Sean Clancy, and JB Boyd. Hours: Mon.-Sun., 11am-7pm. Contact: 843/805-8052 or at (www.robertlangestudios.com).

Simpatico Gallery, 63 Broad Street, Charleston. **Ongoing** - The wish of Simpatico Gallery is to provide a range of fine art to not only occupy wall space, but to provide both quality and individual expression from dedicated artists. We invite all those interested in seeing unique and innovated works of art to make it a point to stop by our locations when visiting either of the country's most prized cities. Hours: Mon.-Fri., 11am-5pm & Sat., noon-5pm. Contact: 843/478-4537 or at (www.simpaticogalleries.com).

Stewart Fine Art, 12 State Street, Charleston. **Ongoing** - Featuring works by Sue Stewart, Charles DuPre DeAntonio, Robert Isley, Margaret Dyer, Fran Moeller Gatins, and James Wellington Taylor, Jr. Hours: Tue.-Sat., 11am-5:30pm. Contact: 843/853-7100 or at (www.suestewartfineart.com).

Srebniak Gallery, 195 1/2 King Street, Charleston. **Ongoing** - Featuring paintings, pastels and drawings by C. Katriel Srebniak and guest artists. Hours: call for hours. Contact: 843-580-8488 or at (www.sregallery.com).

Stono Gallery, 3874 Savannah Highway Suite 1, Red Top Village Shopping Center (near Ravenel and Rantowles), Johns Island. **Ongoing** - Stono Gallery is an eclectic and bohemian fine art gallery featuring original paintings and other works of art by local, national, and international artists. Over 100 original paintings are on display and for sale. Hours: Tue.-Sat., 11am-5pm and Sun., noon-4pm. Contact: Simon Schatmeyer, 843/697-7347 or at (www.stonogallery.com).

Studio 151 Fine Art Gallery, 175 Church St., just south of the corner of Market and Church St., Charleston. **Ongoing** - Featuring original art in traditional, realism, wildlife, impressionism collage, and abstracts in a variety of mediums, including photography and hand crafted jewelry. Offering the works of Colleen Wiessmann, Rosie Phillips, Shelby Parbel, Bob Graham, Amelia Whaley, Dixie Dugan, Nancy Davidson, Sandra Scott, Jennifer Koach, Michel McNinch, Amelia Rose Smith, Lissa Block, Debra Paysinger, Charles Moore, Roger Tatum, Daryl Knox, Gina Brown and Madison Latimer. We also participate in Charleston's historic French Quarter art walks every March, May, October and December. Hours: Mon.-Thur., 10am-6pm, Fri. & Sat., 10am-8pm; and Sun., 11am-5pm. Contact: 843/579-9725 or at (www.studio151finearts.com).

Tara Vis Gallery, 218 C King Street, Charleston. **Ongoing** - At Tara Vis Gallery, you will discover photographic journeys, what brought each of us to this place in the photography field, and why their prowess in these endeavors places them at the top of the list in this field. I want Tara Vis Gallery to be a place where you can lose yourself in the images and stories, a respite from the mundane, taking you places that many people on this earth will never have the opportunity to experience. Featuring work by Patrick Kelly, Ben Reed, Brian Biemann, Tom Whitfield, and Sorin Onisor. Hours: Thur.-Sun., 10am-6pm. Contact: 843/577-0253.

The Audubon Gallery, 190 King St., Charleston. **Ongoing** - "Charleston's only gallery for the Natural History and sporting art enthusiast!" Locally owned, the gallery specializes in the golden age of natural history (1700-1900), emphasizing John James Audubon, one of Charleston's most highly regarded artists. Here, you will find a tour-de-force of Audubon's "Birds of America" as well as other highly acclaimed natural history art. A sportman's paradise with a large selection of antique wildfowl decoys, collectibles, nostalgic paintings, prints of days afield and favorite hunting dogs. We offer museum-quality framing and conservation services for works of art on paper to protect and present your most treasured pieces. Hours: Mon.-Sat., 10am-5pm or by appt. Contact: 843/853-1100 or at (www.audubonart.com).

The Brizard Studio, one King Street, Suite 404, Charleston. **Ongoing** - Original fine oil paintings by Robin Brizard, award-winning impressionist artist. Hours: by appt. only, call 843/577-0964.

The Charleston Renaissance Gallery, 103 Church Street, at St. Michael's Alley, Charleston. **Ongoing** - Showcasing nineteenth century oil paintings, works on paper and sculpture of the American South. Hours: Mon.-Sat., 10am-5pm. Contact: 843/723-0025 or at (www.fineartsouth.com).

The George Gallery, 54 Broad Street, Charleston. **Ongoing** - The George Gallery represents contemporary American artists including Frank Phillips, Salter Scharstein, Tom Stanley, Allison Gildersleeve, Alan Jackson, Heather Jones, Catherine Booker Jones, Paul Yanko, Justin Giunta, Lori Glavin, Catherine Erb, Betsy Brackin, Vicki Sher, Amanda Norman and Alan Taylor Jeffries. A selection from the estates of William Halsey and Otto Neumann are also available through the gallery. In addition to sales, we offer consultation services for commercial and residential projects. We are here to make your art collecting experience simple and enjoyable. Hours: Tue.-Sat., 11am-5pm. Contact: 843/579-7328 or at (www.georgegalleryart.com).

The Space, 2143 Heriot Street, Studio F, just past Carter's Storage, Charleston. **Ongoing** - The Space is a newly renovated art venue with private studio rental, a public gallery and photography studio. The Space hosts Camera Works Cafe, art exhibitions, and special events. Hours: Mon.-Fri., 10am-4pm. Contact: call Mark Stetler at 212/495-9807 or at (thespacecreates.com).

The Sportsman's Gallery, 165 King Street, Charleston. **Ongoing** - Featuring one of the largest, most diverse collections of contemporary sporting and wildlife art found today and once having viewed it, we are confident you will concur. Hours: Mon.-Fri., 10:30am-5:30pm, Sat., 11am-5pm or by appt. Contact: 843/727-1224 or at (www.sportsmansgallery.com).



Work by Glenn Harrington

Wells Gallery, The Sanctuary at Kiawah Island Golf Resort. Located just 30 minutes from Charleston, Wells Gallery is the premiere gallery at The Sanctuary Resort dedicated to providing contemporary art works focused on the Lowcountry and Southern experience. **Ongoing** - Featuring a selection of oil paintings, sculptures, jewelry, and watercolors from renowned local and national artists. Hours: Mon.-Sat., 9am-5pm, & Sun., 10am-4pm. Contact: 843/576-1290, e-mail to (kiawah@wellsgallery.com) or at (www.wellsgallery.com).

Trager Contemporary, 577 King Street, Charleston. **Ongoing** - is dedicated to presenting distinctive local, national, and international emerging and mid-career artists working in traditional, nontraditional, and mixed media, from painting and sculpture to installations and works on paper. Not only are we focused on showcasing and cultivating the work and careers of our artists, but we also believe in supporting the practical components of art for creators, enthusiasts, and collectors through gallery talks, workshops and events, and a speaker series. We aim to build a diverse community of people who want to engage with art, broaden the dialogue about culture and

contemporary art, and provide a gathering space where all are welcome. Hours: Tue.-Sat., 11am-7pm & Sun., noon-5pm. Contact: 843.882.5464 or at (www.tragercontemporary.com).

ALTERNATE ART SPACES - Charleston **Avondale Therapy**, 815 Savannah Highway, Suite 101, Charleston. **Ongoing** - This space is an ideal location for contemporary art with its concrete floors, high white walls, and dramatic lighting, one has the sense of an New York City gallery versus the hidden gem of West Ashley. Hours: M-F by appt. Contact: 843/870-0278.

Emeline, 181 Church Street, Charleston. **Ongoing** - Located in Charleston's historic district, Emeline is a clever and thoughtfully designed retreat crafted with the curious traveler in mind. The experienced team embodies the persona of a consummate host, always focused on the vibrant days of hospitality. Emeline's accommodations provide a warm welcome after a busy day exploring all the notable points of interest that lie just outside its doors. This captivating refuge with 212 all-king bed guest rooms includes 128 luxury suites and 16 double king bed accommodations. Hours: reg hotel hours. Contact: 843/577-2644.

Chesterfield

Douglas Gallery, 144 Main St, Chesterfield. **Ongoing** - Featuring the works of Jonathan Douglas. Fine art oil and watercolor paintings primarily focused on local scenery painted plein aire and in studio. Hours: open by appt. only. Contact: e-mail at (144main@gmail.com) or at (www.douglasgallery.org).

Columbia Area

Congaree Vista Area, downtown Columbia, **3rd Thursday of every month, 5-8pm** - "Third Thursday Art Night in the Vista," including: Koger Center for the Arts Plaza Stage, One Eared Cow Glass, Lewis + Clark, Mike Williams Art, and Stormwater Studios. Contact: at (www.stormwaterstudios.org).

Alicia Leeke Fine Art Studio, 3821 Edinburg Rd., Columbia. **Ongoing** - Featuring original acrylic cityscapes, abstracts, monotypes, and drawings on canvas and fiber. Giclee's on canvas and paper also available. Hours: by appt. only. Contact: 803/429-5456 or at (www.alicialeeke.com).

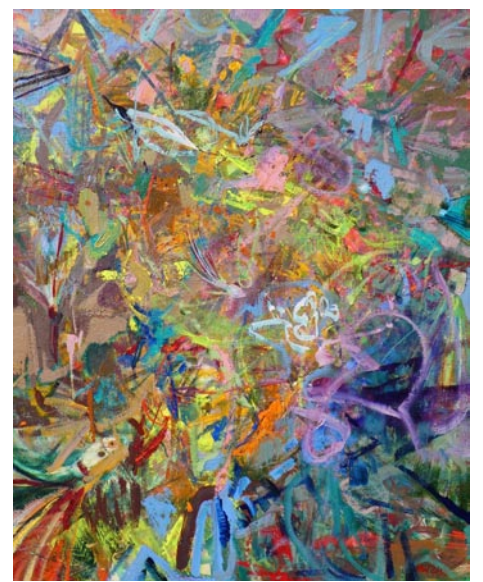
ArtCan Studio & Gallery, 108 Beaufort Street, Chapin. **Ongoing** - Featuring original paintings, handpainted furnishing, and limited and open edition lithographs by Judy Bolton Jarrett. Hours: Thur. & Fri., noon-5:30pm; Sat., noon-4pm or by appt. (call before coming). Contact: 803/345-6588 or at (www.judyjarrettgallery.com).

Artsy Fartsy Art Gallery and Coffee Bar, 906 Knox Abbott Drive, Cayce. **Ongoing** - Featuring art by local artists and cafe and wine bar. We also have MIND GRAVY which is our poetry night every wed 8-10pm. Hours: Wed.-Sat., 7pm-2am. Contact: 803/7084731 or e-mail at (Ladyartnsoul@gmail.com).

Bella Vista Art & Framing, 705 Gervais St., downstairs of City Market Antiques, Columbia. **Ongoing** - Featuring original works of art of varied national artists, regional artists, vintage art, antiquarian engravings and etchings, original photography. Also a Mort Kunstler dealer and large selection of SC artists, giclees, and limited edition prints. And, offering a full service custom framing shop featuring professional, quality framing at below industry prices. Hours: Tue.-Sat., 10am-5:30pm. Contact: 803/765-0808 or e-mail at (bellavistaart@bellsouth.net).

Carol Saunders Gallery, 922 Gervais St., Columbia. **Ongoing** - Featuring fine art objects and works by local artists, including Mana Hewitt, Stephen Chesley, Carol Pittman, Mike Williams, Laura Spong, Heidi Darr-Hope, Judy Hubbard, Jeri Burdick, Clay Burnett, and Eddie Bryan. Hours: M-F, 10am-5:30pm; Sat., 11am-5pm. Contact: 803/256-3046.

City Art, 1224 Lincoln Street, Columbia. **Main Gallery, Through Aug. 31** - "Orientation," featuring paintings by Mike Williams. Our other galleries will be open too featuring select regional artists including the likes of Kathy Morganello, Max Miller Dowdle, Lee A. Monts, Bruce Nellsmith, Heather Noe, Mark Conrardy, Randy Hanna and Alicia Leeke. **Ongoing** - Featuring works by Jane Aldridge, Jim Arendt, Randolph New Armstrong, Penny Baskin, Jo Dean Bauknight, Robbie Bell, Kimberly Betchman, Tarleton Blackwell, Angela Bradburn, Betty Bramlett, Joe Byrne, Carolita Cantrell, Kathy Casey, Anne Cunningham, Bob Doster, Gerard Erley, Claire Farrell, Amy Fichter, Tim Floyd, Michael Fowler, Teri Goddard, Harriet Goode, Vanessa Grubbs, Randy Hanna, Shelley Hehenberger, Mana Hewitt, David Kessler, Jan Kransberger, Robert Lyon, Rena MacQueen, Doug McAbee, Fred McElveen, Esther Melton, Max Miller, Lee A. Monts, Marge Loudon Moody,



Work by Mike Williams

Blake Morgan, Bruce Nellsmith, Heather Noe, Susan Nuttall, Patrick Parise, Ann Hightower-Patterson, Leslie Pierce, Carol Pittman, Sylvia Ady-Potts, Alex Powers, Brian Rego, May Reisz, Tom Risser, Peggy Rivers, Cindy Saad, Sara Schnecko, Ed Shmunes, Wanda Steppe, Nancy Thompson, Teri Tynes, Yisha Wang, Wendy Wells, Sam Wilkins, Rod Wimer, and Katarina Zaric. This represents a rare opportunity to view a very wide range of acclaimed SC artists at one time. City Art features three distinct gallery spaces. A complete fine artists supply store is located on the lower level. Fine custom designer framing is available at City Art. In addition the Gallery is often host to a variety of events hosted by rental clients. City Art is a wonderful space to enjoy and purchase original art, art supplies, fine framing, take art classes and have wedding receptions, etc. Hours: Mon.-Thur., 11am-4pm; Fri., 11am-3pm; and Sat., 11am-3pm. Contact: 803/252-3613 or at (www.cityartonline.com).

George Stone Fine Art, 413 Crown Point Road, Columbia. **Ongoing** - George Stone is a representational oil painter who focuses primarily on landscape and still life subject matter. He attempts to convey the beauty and dignity of everyday scenes to his viewers through a clear concept, accurate drawing, expressive values and color and a well-designed composition. He is especially interested in developing a mood in his landscapes by capturing the quality of light present during different times of day, different seasons of the year and different locations. Hours: by appt. only. Contact: 803/354-0902 or at (<https://www.georgestonefineart.com>).

Havens Framemakers and Gallery, 1616 Gervais St., Columbia. **Ongoing** - Exhibiting paintings by local artists: Jamie Blackburn, Diane Gilbert, Betsy Havens, Rob Shaw, Steven Whetstone, James E. Calk and others. Featuring an extensive collection of handcrafted museum quality frames. Art and frame restoration. Hours: Mon.-Fri., 9:30am-6pm; Sat., 10am-5pm. Contact: 803/256-1616 or at (www.havensframemakersandgallery.com).

HoFP, 2828 Devine Street, Columbia. **Ongoing** - Featuring original works of art from around the world and around the corner. Hours: Mon.-Fri., 9am-5:30pm; Sat., 10am-5pm, & by appt.. Contact: 803/799-7405 or at (www.hofpgallery.com).

im-mer-sion, an interactive art space, @ Main Course, 1626 Main Street, Columbia. **Ongoing** - im-mer-sion showcases a variety of interactive art room exhibits created by local, SC-artists. Spend the afternoon with friends taking fun and creative photos, or host an event with champagne and charcuterie boards. The options are limitless. Hours: Mon.-Thur., 11am-11pm & Fri.-Sun., 9am-11pm. Contact: 814/795-3843 or at (www.immersionsc.com).

Lewis & Clark Gallery, 1001 Huger Street, behind One Eared Cow Glass, Columbia. **Ongoing** - Featuring work by Clark Ellefson and other contemporary artists. Hours: Mon.-Fri., 9am-6pm; Sat., 9am-3pm & by appt. Contact: 803/765-2405 or at (www.lewisandclarklamps.com).

Michael Story Studio/Gallery, 116 Brook Trout Ct., Lexington. **Ongoing** - Featuring traditional landscapes in oil & pastel by Michael Story. Giclee & reproduction prints. Hours by appt. only. Contact: 803/356-4268 or at (www.michaelstory.com).

Mike Brown Contemporary, (formerly if ARTS) 1221 Lincoln Street Columbia. **Through July 11** - "Mike Brown Contemporary Artist in Residence Tonya Gregg". Mike Brown Contemporary in partnership with One Columbia SC, is pleased to announce Tonya Gregg will serve as the second MBC Artist In Residence. With generous support from One Columbia SC, Gregg will occupy the Mike Brown Contemporary gallery. The gallery will accept studio visits with

continued on Page 42