

# NC Commercial Galleries

continued from Page 64

and Sun. noon-5pm. Contact: 336/873-1001 or at ([www.gypspotters.com](http://www.gypspotters.com)).

**Moore Pots Pottery**, 333 Jugtown Rd., Seagrove. **Ongoing** - Featuring traditional and folk art pottery; candlesticks, Rebekah pitchers, and chickens; wood fired salt glazed. Hours: Mon.-Sat. 10am-5pm. Contact: 910/464-1453.

**Nicholas Havner Pottery**, 1576 Leaman Road, Robbins. **Ongoing** - Featuring works by Nick Havner. Hours: by appt. only. Contact: 864-205-9790 or e-mail at ([NicholasHavnerPottery@gmail.com](mailto:NicholasHavnerPottery@gmail.com)).

**Nichols Pottery**, 1400 Hwy. 705 S., Seagrove. **Ongoing** - Country yet classic, functional and decorative. Hand-thrown stoneware with timeless appeal, including an ongoing Biblical appeal. Hours: Mon.-Sat., 10am-5pm & (Oct.-Dec.) Sun., 1-5pm. Contact: 910/948-4392 or at ([www.nicholspotteryshop.com](http://www.nicholspotteryshop.com)).

**O'Quinn Pottery**, 4456 Busbee Rd., Seagrove. **Ongoing** - Featuring multi-colored gas fired functional and decorative pottery by Sandra O Quinn. Hours: Mon.-Sat., 9am-5pm. Contact: 910/464-5125.

**Old Gap Pottery**, 944 NC Hwy. 705, Seagrove. **Ongoing** - Contemporary in design; oriental in nature. One-of-a-kind stoneware, Raku, and porcelain by Phillip Pollet. Hours: Mon.-Sat., 10am-4 (call ahead). Contact: 336-873-7664.

**Old Hard Times Pottery**, 7672 Union Grove Church Rd., Seagrove. **Ongoing** - Featuring traditional, as well as utilitarian and decorative pottery. Salt glaze, red glaze, and a variety of colors. Dinnerware, face jugs, angels and luminaries by Janey McNeill. Hours: Mon.-Sat., 9am-5pm & Sun., 10am-5pm. Contact: 336/879-2481 or e-mail at ([oldhardtimes@rtmc.net](mailto:oldhardtimes@rtmc.net)).

**Old House Pottery**, 236 Beane Lane, Seagrove. **Ongoing** - Featuring functional stoneware by Fred Beane. Hours: Mon.-Sat., 9am-5pm & Sun., 1-5pm. Contact: 336/879-2052.

**Original Owens Pottery**, 3728 Busbee Rd., Seagrove. **Ongoing** - Featuring gray ware with flower designs and other painting, blues, and lots of red ware by Boyd Owens. Hours: Mon.-Sat., 9am-5pm & Sun., noon-5pm. Contact: 910/464-3553.

**Pebbles Pottery**, 7127 Hwy. 705, Eagle Springs. **Ongoing** - Hand-turned functional & decorative stoneware with lead-free glazes by Pebbles Bryson. Hand-carved folk art scenes & dogwoods. North Carolina vases are my special items. Hours: Tue.-Sat., 10am-5pm (closed Jan.). Contact: 910/948-4120 or e-mail at ([PebblesPottery@NCTconnect.com](mailto:PebblesPottery@NCTconnect.com)).

**Phil Morgan Pottery**, 966 Hwy. 705, Seagrove. **Ongoing** - Featuring 100% hand-thrown pottery, crystalline glazed porcelain, wood fired salt-glaze, stoneware, and copper red glazes by Phil Morgan. Hours: Mon.-Sat., 9am-5pm. Contact: 336/873-7304.

**Piney Woods Pottery**, 1430 Ether Rd., Star. **Ongoing** - Sculpted pottery figures - snowmen, clowns and angels; hand appliques and functional pottery. Hours: Mon.-Sat., 9am-5pm. Contact: 910/572-3554.

**Pottery Junction**, 413 E. Main St., Seagrove. **Ongoing** - Featuring strong forms drawing inspiration from all cultures, history, and tradition. Thoughtful designs and some of my own "whimsy" pieces as well as useful art collection by Regina Vonnannon. Hours: Mon.-Sat., 10am-5pm (closed Thur.). Contact: 336/873-9266.

**Pottery Road Studio and Gallery**, 1387 NC S Hwy. 705, 6 miles south of Seagrove town limits. **Ongoing** - Named after the scenic byway which runs through the Seagrove pottery community, the gallery represents over 100 exclusive artists from NC as well as other areas of the country. Potters, Don and Susan Walton work in a studio attached to the front gallery with a window so that visitors can see the day to day tasks of pottery production. A large selection of art stamps by Rubber Stamp Tapestry is also located in the gallery. Come see both functional and contemporary pottery along with other fine crafts at Pottery Road. Hours: Tue. - Sat., 10am-5pm, & closed major holidays. Contact: 336-879-2600 or ([info@potteryroad.com](mailto:info@potteryroad.com)).

**Potts Pottery**, 630 East Main St., Seagrove. **Ongoing** - Featuring many colors of functional tableware, wood-fired salt-glaze and wood ash

glazes by Jeff Potts. Hours: Mon.-Sat., 9am-5pm. Contact: 336/873-9660.

## New Location

**Ray Pottery**, 2435 Alt. US Hwy. 220 N., Star. **Ongoing** - Featuring high-quality, gas-fired stoneware by Paul and Sheila Ray. Hours: Mon.-Sat., 10am-5pm. Contact: 336/879-6707 or at ([www.paulandsheilaray.com](http://www.paulandsheilaray.com)).

**Red Hare Pottery and Gifts**, 191 Barken Haller Lane, Seagrove. **Ongoing** - Nature is my favorite muse for my hand decorated pottery. People find it hard to believe it is microwaveable and dishwasher safe but function is important to me. Hours: call for hours. Contact: 336/879-9855.

**Richardson Pottery**, 5466 Joel Jessup Rd., Seagrove. **Ongoing** - Functional & decorative stoneware, microwave, oven and dishwasher safe by Susan & Danny Richardson. Hours: Tue.-Sat., 10am-5pm. Contact: 336/879-5672.

**Rockhouse Pottery**, 1792 Hwy. 705 S., Seagrove. **Ongoing** - Featuring Salt glaze and hand carved grapes, dogwood, pines, tulips, oak leaves and chili peppers on pots by Carolyn Poole. Hours: Mon.-Sat., 9am-5pm. Contact: 336/879-2053 or at ([www.rtmc.net/~rockhouse](http://www.rtmc.net/~rockhouse)).

**Scott's Pottery**, 143 Jugtown Rd., Seagrove. **Ongoing** - Featuring functional hand-made pottery by Tina Scott. Hours: Tue.-Sat., 10:30am-5pm. Contact: 910/464-2306 or e-mail at ([tscott72@rtmc.net](mailto:tscott72@rtmc.net)).

**Seagrove Creations Pottery Gallery**, 354 Little River Rd., Seagrove. **Ongoing** - Showcasing over 60+ potters and arts from craftsmen within the Seagrove area. Hours: (Apr.-Dec.) Mon.-Sat., 9am-6pm & Sun., 1-6pm (Jan.-Mar.) Mon.-Sat., 10am-5pm & Sun. 1-5pm. Contact: 336/873-7204 or at ([www.potteryofseagrove.com](http://www.potteryofseagrove.com)).

**Seagrove Pottery**, 106 N Broad St., Seagrove. **Ongoing** - Featuring works by 50 local potters functional and decorative pieces. Hours: Mon.-Sat., 9am-5pm & Sun., 11am-5pm. Contact: 336/873-7280.

**Seagrove Stoneware**, 136 West Main St., Seagrove. **Ongoing** - Functional and decorative stoneware vases, bowls, lamps, dinnerware, fountains, and floor pieces. All wheel turned and unique glazes. Hours: Mon.-Sat., 10am-5pm & Sun., 11am-4pm. Contact: 336/873-8283 or at ([www.seagrovestoneware.com](http://www.seagrovestoneware.com)).

**Semper Fi Pottery**, 481 King Road, off of Business 220 S. before you get to Blackankle Rd., Seagrove. **Ongoing** - A family owned and operated business. We are not the traditional potters that you would more than likely see around Seagrove. We like to make each and every piece that we create unique. Hours: Mon.-Sun., 10am-5pm. Contact: 910/975-1215.

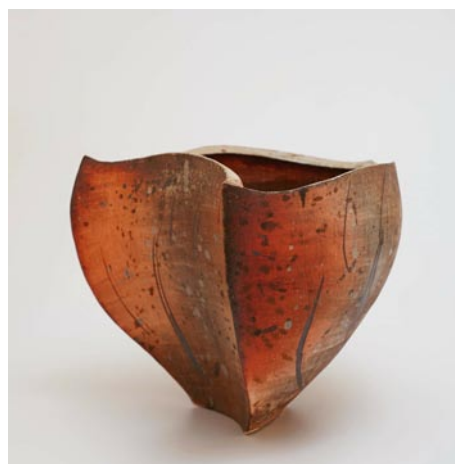
**Shelton's Pottery**, 391 Cagle Rd., Seagrove. **Ongoing** - Featuring salt glaze and purple, red, yellow, yellow w/blue, green, blue, dark blue, light blue, specks, sponge colors, blue w/ brown, brown, and beige glazes by Mitchell & Sherri Shelton. Hours: Mon.-Sat., 9am-5pm & Sun., 9am-5pm (Oct.-Mar.). Contact: 336/963-2444 or e-mail at ([sheltonspottery@rtmc.net](mailto:sheltonspottery@rtmc.net)).

**Smith Pottery**, 743 South Hwy 705, Seagrove. **Ongoing** - Spirited - imaginative - unique "art pottery" handcrafted by the Smith family. Hours: Tue.-Sat., 10am-5pm. Contact: 336/879-1174 or at ([www.smithpottery.com](http://www.smithpottery.com)).

**Snowhill Pottery & Tileworks**, 402 East Main Street, Seagrove. **Ongoing** - Featuring handmade tile, stoneware sculpture, porcelain jewelry, and slip-trailed pottery by Laura Weant-Johnson. Also also custom tile installations. Hours: Tue.-Sat., 10am-5pm or by appt. Contact: 336/301-6681.

**Stuempfle Pottery**, 1224 Dover Church Rd., Seagrove. **Ongoing** - Featuring pottery with expressive shapes and natural surfaces by David Stuempfle. Hours: during kiln openings and by appt. Contact: 910/464-2689 or at ([www.stuempflepottery.com](http://www.stuempflepottery.com)).

**Studio Touya**, 4911 Busbee Road, Seagrove. **Ongoing** - Studio Touya is a handmade pottery studio located in Seagrove, where Hitomi and Takuro Shibata set up studio and built a Japanese style wood kiln. Our focus is to make simple and functional pottery by using local wood clay and wood firing technique. We named our pottery as "Touya" when we started our small



Work from Studio Touya

pottery studio in Shigaraki, Japan, and it literary means "pottery house" in Japanese which we really like. Contact: (336)510-7385 or at ([www.studiotouya.com](http://www.studiotouya.com)).

**Sunset Pottery**, 123 Sunset Dr., Robbins. **Ongoing** - Featuring all lead free pottery by Harold B. & Gloria B. Stutts. Have traditional pottery, piggy banks, lamps, vases, and special order pieces. Hours: Mon.-Sat., 10am-5pm. Contact: 910/948-3009 or e-mail at ([gstutts@maniscustombuilders.com](mailto:gstutts@maniscustombuilders.com)).

**Teague's Frogtown Pottery**, 179 Frogtown Rd., Eagle Springs. **Ongoing** - Featuring traditional, hand-thrown pottery that is all lead-free by Jean Teague. We specialize in dinnerware, cookware, lamps, vases, and Christmas ornaments. Hours: Mon.-Sat., 9am-5pm. Contact: 910/948-3540.

**The Gingerbread House Pottery**, 246 Old Plank Rd., Seagrove. **Ongoing** - Featuring decorative and functional cone 6 electric fired pieces by Suzanne Bettis. Hours: Mon.-Sat., 10am-5pm (closed Jan. & Feb.). Contact: 336/873-7762 or e-mail at ([suzanbett9@yahoo.com](mailto:suzanbett9@yahoo.com)).

**The Triangle Studio**, 1140 NC-705, Seagrove. **Ongoing** - Located near downtown Seagrove, this studio and gallery space is a collaboration between ceramic artists Kate Waltman (formerly Kate Johnston) and Erin Younge, as well as guest ceramic artists Bill Jones, Andrew Dutcher, and Margaret Larson. Hours: Fri. & Sat., 10am to 4pm. Contact: 336/872-1027 or at (<https://thetrianglестudio.com/>).

**Thomas Pottery**, 1295 S. Hwy. 705, Seagrove. **Ongoing** - Featuring functional and decorative stoneware pottery by Scott and Bobbie Thomas. Hours: Tue.-Sat., 10am-5pm. Contact: 336/879-4145 or at ([www.thomaspottery.com](http://www.thomaspottery.com)).

**Tom Gray Pottery**, 1480 Fork Creek Mill Rd., Seagrove. **Ongoing** - Featuring wheel thrown and hand built utilitarian wares fired in a gas-fired car kiln to cone 10 utilizing local clay in slip decoration and glazes by Tom Gray. Glazes are primarily mattes. Shapes of serving pieces and dinner ware include square and oval as well as round. Hours: Mn.-Sat., 10am-5pm. Contact: 336/873-8270 or at ([www.n2clay.com](http://www.n2clay.com)).

**Triple C Pottery**, 3267 Big Oak Church Rd., Eagle Springs. **Ongoing** - Featuring hand-thrown functional and decorative pieces, with a variety of lead-free glazes. Hours: Mon.-Sat., 9am-5pm. Contact: 910/948-3635 or at ([www.triplecpottery.com](http://www.triplecpottery.com)).

**Turn and Burn Pottery**, 124 East Ave., Seagrove. **Ongoing** - Featuring traditional Seagrove salt-glazed and wood-fired stoneware. Contemporary Raku and horsehair by David and Deborah Garner. Hours: Mon.-Sat., 9am-5pm. Contact: 336/873-7381 or at ([www.turnandburnpottery.com](http://www.turnandburnpottery.com)).

**Uwharrie Crystalline Pottery**, 112 East Ave., Seagrove. **Ongoing** - Featuring crystalline pottery (the art of growing crystals on vases), raku, and functional stoneware by William & Pamela Kennedy. Hours: Mon.-Sat., 9am-5pm & Sun., noon-5pm. Contact: 336/873-7532 or e-mail at ([uwharriecrystalline@embarqmail.com](mailto:uwharriecrystalline@embarqmail.com)).

**Vernon Pottery**, 1066 Chriscoe Rd., Seagrove. **Ongoing** - Featuring a wide line of wares, from 10 oz. coffee mugs to 12 gal. planters. Their surface treatments include slip-trailing, carving, multiple glazes, and overglaze brushwork. Hours: Mon.-Sat., 10am-5pm. Contact: 336/879-2788.

**Village Pottery and Marketplace**, 205 E. Main St., Seagrove. **Ongoing** - Downtown Seagrove's oldest and largest gallery, featuring fine pottery and crafts by over 100 artisans including these potters: Gene Arnold (Mt. Airy, NC), Darlene Russell (Elderado, NC), Walter Abernson (Concord, NC), Joyce Branch (Waxhaw, NC), Joe Frank McKee (Dillsboro, NC), Tameria Martinez (Boonesboro, MD), Judy Freeman Foushee (Eagle Springs, NC), Fred Rust

(Gastonia, NC), Houge Vernon (Seagrove, NC), Wyndham & Melanie Dennison (Seagrove, NC) and several others. Hours: Mon.-Sat., 10am-5pm & Sun., 1-5pm. Contact: 336/873-7966 or at ([www.seagrovevillagepottery.com](http://www.seagrovevillagepottery.com)).

**Walker Art Studios Sculpture & Fine Art**, Historic Lucks Cannery Complex, 365 Fernandez Loop, Suite 205, Seagrove. **Through July 31** - "Birds of a Feather Art Show". An exhibition of 2D and 3D art featuring our feathered friends. Please come and vote for our first People's Choice Award to support your favorite artist **Ongoing** - Walker Art Studios was formerly CB East and serves as our gallery and studio space. Located on the East side of Seagrove, it provides a space for artists to display their art for sale as well as providing studio space for our owners and visiting sculptors needing a place to touch up sculptures before the pieces begin the process of being cast into bronze at our foundry. Hours: by appt. Contact: 336/460-1411, 336/465-1121 or at ([walkerartstudios@gmail.com](mailto:walkerartstudios@gmail.com)).

**Walton's Pottery**, 1387 S. NC Hwy. 705, Seagrove. **Ongoing** - Innovative, contemporary pottery by Don and Susan Walton located inside Pottery Road Gallery. Hours: Tue.-Sat., 10am-5pm. Contact: 336/879-2600 or at ([www.potteryroad.com](http://www.potteryroad.com)).

**Westmoore Pottery**, 4622 Busbee Rd., Seagrove. **Ongoing** - Historical redware, salt-glazed stoneware, and green-glazed pottery, especially styles from central NC before 1850 by David and Mary Farrell. Hours: Mon.-Sat., 9am-5pm (closed Dec. 24- Jan. 17). Contact: 910/464-3700 or at ([www.westmoorepottery.com](http://www.westmoorepottery.com)).

**White Hill Gallery**, 407 Highway (15-501), Carthage. **Ongoing** - Featuring works of beautiful pottery, including Southwest, ceramic, hand-painted glassware, wood turning, and paintings in watercolor, oil and pencil. Hours: Tue.-Fri., 10am-6pm; Sat., 10am-5pm; & Sun., 1-5pm. Contact: 910/947-6100.

**Whynot Pottery**, 1013 Fork Creek Mill Rd., Seagrove. **Ongoing** - Featuring interesting shapes and intriguing glazes. Custom sizes on lamps, vases and bottles by Mark and Meredith Heywood. Hours: Mon.-Sat., 9am-5pm. Contact: 336/873-9276 or at ([www.whynotpottery.com](http://www.whynotpottery.com)).

**Williams Pottery**, 2170 Dan Road, Robbins. **Ongoing** - Functional pottery in multi-colored as well as decorative glazes, Hours: Tue.-Sat., 10am-4pm. Contact: 910/464-2120.

**Windsong Pottery**, 6109 Brantley Gordon Rd., Denton. **Ongoing** - Featuring handmade functional stoneware in glazes of floating blue and rainbow by Margie Nance, Matthew Nance, Lydia Nance and other family members. Hours: Mon.-Fri., 9am-5pm. Contact: 336/857-2485 or e-mail at ([windsongpottery@yahoo.com](mailto:windsongpottery@yahoo.com)).

**Wyndham & Brooke Haven Pottery Gallery**, 209 East Main St., Seagrove. **Ongoing** - Featuring fine functional high-fired stoneware with rich contemporary glazes by Wyndham and Melanie Dennison. Hours: Mon.-Sat., 9am-5pm & Sun., noon-5pm. Contact: 336/873-7254.

## Shelby

**Buffalo Creek Gallery**, 104 E. Warren Street, Shelby. **Ongoing** - The gallery features paintings, drawings, note cards, polymer clay art, pottery, woodturnings, woodcarvings, jewelry, stained glass, pressed flowers, quilting, weaving and much more! Hours: Mon.-Fri., 10am-5:30pm and Sat., 10am-4pm. Contact: 704/487-0256 or at ([www.buffalocreekgallery.com](http://www.buffalocreekgallery.com)).

## Siler City

**Against His Will Gallery and Studio**, 117 E. Second St., Siler City. **Ongoing** - Featuring handknitted rugs, quality yarn, stunning alpaca fiber in a variety of colors, handmade knitting needles, Fricke spinning wheels as well as very cool mobiles, hand poured environment-friendly candles, and more! Hours: Wed.-Fri., 1-5pm & Sat., 10am-5pm. Contact: 919/742-1122 or at ([www.AgainstHisWillStudio.com](http://www.AgainstHisWillStudio.com)).

**Chatham Camera Club Gallery**, 229 N. Chatham Ave., Siler City, NC. **Ongoing** - Featuring works by a diverse group of amateur and professional photographers networked together around the idea of sharing our knowledge and experience with each other, while enjoying our interest in photography. Hours: by chance and the 3rd Fri. from 6-9pm. Contact: ([www.chathamcameraclub.org](http://www.chathamcameraclub.org)).

**Hotel Hadley Studios**, 130 N. Chatham Ave., Siler City. **Ongoing** - Featuring works by Kristy Church, Sarah Kuhn and Drucilla Pettibone. We consist of 6 studios and an exhibition

continued on Page 66