

# NC Commercial Galleries

continued from Page 65

space. We will have monthly rotating shows in the gallery space. Hours: 3rd Fri. 6-9pm and by chance and appt. Contact: 919/663-0241 or at ([www.hotelhadleystudios.com](http://www.hotelhadleystudios.com)).

**Lakewood Pottery**, 11330 Hwy. 64 W., Siler City. **Ongoing** - Featuring crystalline, high-fired porcelain and gold lusters by Ed Weintraub. Hours: Tue.-Sat., 10am-4pm & Sun., noon-4pm. Contact: 919/663-3743.

**Person to Person Art Studio/Gallery**, 210 N Chatham Ave., Siler City. **Ongoing** - Featuring unique art for interesting people, all created by artist Roger Person. Hours: by appt and on the 3rd Fri., 6-9pm. Contact: 919/663-0982 or e-mail at ([person@charter.net](mailto:person@charter.net)).

**Raleigh Street Gallery**, 120 W. Raleigh St., Siler City. **Ongoing** - Featuring a consortium of many artists from the area painters, sculptors, metal workers, jewelersmiths, basket weavers, soap makers, slate artist, wood workers, - whose works are all on display in a spacious and welcoming atmosphere. Hours: Wed.-Fri., 10am-6pm, by chance or appt. and on 3rd Fri., 6-9pm. Contact: 919/663-6278 or at ([www.raleighstreetgallery.com](http://www.raleighstreetgallery.com)).

## Sparta

**Blue Ridge Gallery of Fine Art**, 103 Gallery Lane, 15 minutes from downtown Sparta. **Ongoing** - Featuring a variety of artworks by local and regional artists. Hours: Thur.-Sat., 11am-6pm & Sun., 1-6pm, when open - call ahead. Contact: 336/372-1711 (<http://www.blueridgefineart.com>).

**Cater Pots Studio**, 209 Antioch Church Road, 4 miles from the town of Sparta. **Ongoing** - Husband-&-Wife team, Daniel & Robin Cater create beautiful stoneware pottery in their Blue Ridge mountain studio. Cater Pots are fired to cone 6 oxidation, so all functional pottery is food, dishwasher, microwave, and oven safe. Cater Pots mixes their own glazes and applies them to the bisqueware in attractive combinations by various means including dipping, brushing and spraying. Hours: Mostly Wed.-Sat., 10am-4pm - call ahead. Contact: 336/372-4604 or at (<http://www.caterpots.com>).

**Mangum Pottery of Turkey knob**, 280 Turkey Hollow Lane, Sparta. **Ongoing** - Featuring pottery and ceramic art by Robin Mangum in a wide variety of function and form. Hours: hours vary so call ahead. Contact: 336/372-5291 or (<http://www.mangumpottery.com>).

## Spruce Pine

**Bob Doster's Backstreet Studio II**, 962 Oak Avenue, Spruce Pine. **Ongoing** - Indoor gallery and outdoor exhibits featuring works by Doster. Hours: during special events and by appointment. Contact: 803/287-7566 or at ([www.bobdoster.com](http://www.bobdoster.com)).

## Statesville

**Village Pot Shop Fine Arts and Crafts Gallery**, 248 N. Center St., 2 Blocks North of the Center of town on the right, Statesville. **Ongoing** - Our mission is to provide a showcase for local and regional artists and artisans, providing high-quality decorative and functional arts and crafts to patrons with an eye for the finer things. Our arts and crafts galleries feature handmade jewelry, blown glass, woodwork, regional pottery, metalwork, mosaics, hand-woven fibers, paintings and more. So, whether you are interested in: vases, bowls, paper weights, fanciful ornaments, stained glass, sun-catchers, decorative boxes, exquisite bowls turned from found pieces of wood, each one of a kind, watercolors, baskets, ceramics, fine photography, prints, collages or oil paintings. We also offer classes and workshops by local and regional artists. Hours: Tue.-Fri., 10:30am-5pm & Sat., 10am-4pm. Contact: 704/380-4689.

## Sylva

**Karcher Stone Carving Studio & Gallery**, 260 North Beta Road, off US 74, Sylva. **Ongoing** - Featuring a working studio and gallery with stone carvings by Collene Karcher, executed in marble, alabaster, and limestone with steel and aluminum introduced at times. Hours: by appt only. Contact: 828/586-4813 or at ([www.collenekarcher.com](http://www.collenekarcher.com)).

## Tryon

**Carri Bass Photography and Art Studio**, 158 N. Trade Street, Tryon. **Ongoing** - Carri Bass Art studio is located in the heart of Tryon. It is in a wonderful old building with great lighting and

a dedicated studio section, in addition to gallery space for monthly art exhibits. Hours: by appt. Contact: 864/598-9880 or st ([carribass.com](http://carribass.com)).

## Valdese

**Play It Again Records Building**, 150 West Main Street, Valdese. **Window Gallery, Through July 2** - Featuring works by Matthew Jaynes. A McDowell County native, Matthew B Jaynes better know as a revolution outlaw, has been creating outsider art since the age of six. Taking inspiration from classic drive-in horror, Saturday morning cartoons, hot-rod car culture and Vincent Van Gogh. He has developed a unique artistic style. Sometimes sweet, sometimes psychotically surrealistic, his asylum artwork emerges dream-like from that liminal state between awakeness and the Land of Nod. The artist's own struggle with the dualistic nature of God informs his every piece be they etched glass, ink-on-paper, or airbrushed objects, Each and every one painstakingly handcrafted inside his house of horrors! Hours: 24/7. Contact: David Mench by e-mail at ([Waggletone@yahoo.com](mailto:Waggletone@yahoo.com)).

## Wadesboro

**Olde Mill Gallery & Studios**, Lockhart-Taylor Center, 514 N. Washington St., Wadesboro. **Ongoing** - At the gallery visitors will see artwork by regional artists which includes: original paintings in oil, acrylic & watercolor, that range from landscapes to abstracts; photography; works in copper and copper repousse; ceramic creations, custom sculptured and functional; art glass jewelry, jewelry made from beads of Swarovski crystal; hand-stitched quilts of exquisite designs; hand painted goblets, pitchers and vases; wood sculptures and turnings, and more. Hours: Mon.-Thur., 10am-5pm; Fri., 10am-3pm or by appt. Contact: 704/272-5464 or at ([www.oldemilgallery.org](http://www.oldemilgallery.org)).

## Washington

**River Walk Gallery**, 139 West Main Street, Washington. **Ongoing** - Located in downtown Washington, the gallery is a stone's throw away from the historic Pamlico River in beautiful Beaufort County, North Carolina. The gallery offers a stunning variety of fine art and high quality craft from local artists. Hours" Mon.-Sat., 10am-5pm. Contact: 252/974-0400 or at ([www.Riverwalkgallery.com](http://www.Riverwalkgallery.com)).

## Waxhaw

**Stewart's Village Gallery**, 116 McDonald St., Waxhaw. **Ongoing** - Featuring pottery by Bill Stewart, as well as works by over 300 other artists including both decorative and functional handmade pieces. The gallery is filled with pottery, jewelry, wrought iron, garden accents, decorative whimsy and so much more. Hours: Mon.-Sat., 10am-5pm & Sun., 1-5pm. Contact: 704/843-5638 or at ([www.stewartsvillagegallery.com](http://www.stewartsvillagegallery.com)).

## Waynesville

**Balsam Ridge Gallery**, 44 North Main Street, Waynesville. **Ongoing** - Fine art gallery featuring paintings of Western NC mountain vistas and beyond. Hours: daily 11am-6pm, but call ahead. Contact: 828/234-1616.

**Cedar Hill Gallery**, 196 N. Main Street, Waynesville. **Ongoing** - Featuring the art of Gretchen Clasby and 83 incredible artisans. Hours: Mon.-Sat., 10:30am-5:30pm. Contact: 828/421-6688 or at (<https://www.cedarhillstudio.com/>).

**Jo Ridge Kelly Fine Art**, a gallery and teaching studio, 136 N. Main Street, Waynesville. **Ongoing** - Featuring the painting of Jo Ridge Kelly. Hours: Thur.-Sat., noon-6pm and Sun.-Wed., by chance or appt. Contact: 828/226-0549 or at ([www.JoKelley.com](http://www.JoKelley.com)).

**Moose Crossing's Burl Wood Gallery**, 101 N. Main Street, Waynesville. **Ongoing** - Featuring rustic Burl furniture with an elegant finish. Two generations of Metzgers, source, design and craft burl. We are fortunate to have talented craftsmen working with us. It is our pleasure to coordinate efforts as a team. The focus is on the end product as an art piece. Hours: Mon.-Sat., noon-5pm or by appt. Contact: 828/452-2550 or at (<https://burl-gallery.com/products/burl-wood-sculpture>).

**T. Pennington Art Gallery**, 15 N. Main Street, Waynesville. **Ongoing** - Featuring pencil drawings of local scenery, and landmarks by Teresa Pennington, including originals, prints and gift items. Also framing is available. Hours: Mon.-sat., 10am-5pm. Contact: 828/452.9284 or at ([www.tpennington.com](http://www.tpennington.com)).

**The Jeweler's Workbench**, 80 N. Main St., Waynesville. **Ongoing** - Specializing in fine hand-crafted jewelry, custom design and repair, limited edition watches and jewelry boxes. Featuring award-winning artists of the Great Smoky Mountains and from across the country. Hours: Mon.-Sat., 10am-5:30pm. Contact: 828/456-2260.

**Twigs & Leaves**, 98 N. Main Street, Waynesville. **Ongoing** - Featuring the nature-related porcelain works with leaves by Kaaren Stoner, as well as other works by regional artists and craftsmen. Hours: Mon.-Sat, 10am-5:30pm. Contact: 828/456-1940 or at ([www.twigsandleaves.com](http://www.twigsandleaves.com)).

## Weaverville

**Mangum Gallery**, 16 North Main Street, Weaverville. **Ongoing** - Featuring functional and decorative pottery dinnerware. Hours: Mon.-Fri., 9am-5pm and Sat., 10am-4pm. Contact: 828/645-4929 or ([www.mangumpottery.com](http://www.mangumpottery.com)).

**Miya Gallery**, 31 N. Main St., Weaverville. **Ongoing** - The gallery is a new and refreshing addition to the WNC art scene. We exhibit work of over 50 artists: fine jewelry, clay, wood, glass, metal, fiber, photography and two dimensional art. Hours: Tue.-Fri., 10am-6pm; Sat., 10am-5pm & Sun., noon-4pm. Contact: 828-658-9655 or at ([www.miyagallery.com](http://www.miyagallery.com)).

## West Jefferson/Jefferson

**Ashe Custom Framing & Gallery**, 105 S. Jefferson Ave., West Jefferson. **Ongoing** - Featuring a varied selection of originals and prints by local and regional artists. Also, a wide array of pottery and handcrafted wooden vases. Hours: Tue.-Fri., 10am-5pm & Sat., 10am-2pm. Contact: 336/246-2218.

**Broomfields Gallery**, 414 E. 2nd St. (across from the post office), West Jefferson. **Ongoing** - Featuring an exhibition of works by NC and SC artists in various mediums in a setting of quality antiques. Hours: Tue.-Sat., 11am-5pm. Contact: 336/846-4141 or at ([www.broomfieldsgallery.com](http://www.broomfieldsgallery.com)).

**CatchLight Gallery**, 118 N Jefferson Avenue, West Jefferson. **Ongoing** - The CatchLight gallery is dedicated solely to the art of photography. In the Spring of 2012, photographer Nicole Robinson decided to create a space where talented photographers would have an opportunity to display and sell their work. A beautiful gallery space grew from a dream into a wonderful reality, evolving into a haven which became available to both the photographers and the viewing public in the arts district of downtown West Jefferson, NC. Hours: Mon., Thur., Fri., & Sat., 11am-5pm & Sun., 11am-4pm. Contact: 336/846-1551 or at ([www.CatchLightGallery.net](http://www.CatchLightGallery.net)).



Works from the Prack Studio / Sculpture Garden

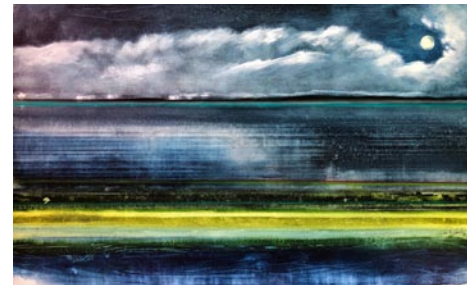
**Prack Studio / Sculpture Garden**, 431 Sunnyside Park Road, Jefferson. **Ongoing** - Featuring sculptures by Mary-Ann Prack. Hours: open by appt only. Contact: 828/406-7046 or at ([www.prackart.com](http://www.prackart.com)).

**Stephen Shoemaker Studio**, 113 S. Jefferson Ave., West Jefferson. **Ongoing** - Featuring original works by watercolorist Stephen Shoemaker. Specializing in historic landscapes and paintings of places and events in/of Ashe County and the area. The "Virginia Creeper" train series is particularly popular. Hours: Mon-Fri., 10am-5pm or by chance. Contact: 336/246-3401.

## Wilmington

**ACME Art Studios**, 711 N. 5th Ave., downtown Wilmington. **Ongoing** - Featuring artists' studios with works by Cass Baes, Gary Breece, Todd Carignan, Phil Covington, Karen Paden Crouch, MJ Cunningham, Dumay Gorham, Amy Grant, Stephanie Holt, Fritz Huber, Marshall Milton, Trey Moore, Allan Nance, Dick Roberts, Angela Rowe, Pam Toll, Michael Van

Hout, and Mark Weber. Hours: Every 4th Friday Night, 6-9pm and by appointment. Contact: Amy Grant via email at [grantamyn@gmail.com](mailto:grantamyn@gmail.com), call 910/805-8424, or view Facebook at <https://www.facebook.com/acmeartstudios>.



Work by Constance Pappalardo

**Art In Bloom Gallery**, 6866 Main Street, Mayfaire Town Center, Wilmington. **Through July 28** - "Capturing Nature," featuring paintings by Debra Bucci. **Through July 28** - "Dance Around the Light," featuring photography by Brian H. Peterson. **Ongoing** - Online and in the gallery, visitors will find a mixture of traditional and contemporary paintings, sculpture, jewelry, ceramics, glass, fabric, wood, photography, and mixed media. Hours: Mon.-Sat., 10am-7pm; Sun, noon-6pm; and by appt. Contact: 484/885-3037 (mobile) or visit (<https://aibgallery.com/>).

**Beck Fine Art Gallery**, inside the Artworks building, 200 Willard Street (between S. Third and S. Front Streets) Wilmington. **Ongoing** - The gallery is founded by Dan Beck, an internationally renowned and award-winning impressionist painter whose figures, still life and landscape paintings have been exhibited across the country. The other exceptionally talented and accomplished resident artists include Kari Feuer, Susan Fishbein, Ann Hair, Pappy Khouri, Heidi-Lee Peach, Ora Sorensen, Peggy Vineyard and Jenny McKinnon Wright. Current guest artists are celebrated painters Richard Oversmith and Jove Wang. Ceramic artist Mark Hewitt's work is also displayed at the gallery. Hours: Thur.-Sat., 11am-5pm & Sun., noon-5pm. Contact: 910/707-4336 or at ([www.beckfineart.com](http://www.beckfineart.com)).

**Bottega Art & Wine Gallery**, 723 N. 4th Street, Wilmington. **Ongoing** - Featuring works by regional and international artists in a variety of media. Hours: Tue.-Wed., 1-10pm and Thur.-Sat., 1pm-midnight. Contact: 910/399-4872 or at ([www.bottegageallery.com](http://www.bottegageallery.com)).

**Charles Jones African Art**, 311 Judges Road, Unit 6-E, Wilmington. **Ongoing** - A gallery dedicated to the traditional arts of West and Central Africa, with over 35 years experience in building fine collections for collectors and museums. Inquiries are welcome. Consultation, research and appraisal services available for individuals, estates and institutions by ISA certified appraiser, Maura Kropke. Exhibitions arranged and curated with essays by major scholars. Hours: Mon.-Fri., 7:30am-4:30pm. Contact: 910/794-3060 or at (<https://charlesjonesafricanart.com/>).

**Dan Beck Studio**, 857 Village Road, Leland. **Ongoing** - features some of the best in national talent for representational and abstract art. Being the studio of award-winning artist, Dan Beck. The other exceptionally talented and accomplished resident artists include Kari Feuer, Susan Fishbein, Ann Hair, Pappy Khouri, Heidi-Lee Peach, Ora Sorensen, Peggy Vineyard and Jenny McKinnon Wright. Current guest artists are celebrated painters Richard Oversmith and Jove Wang. Ceramic artist Mark Hewitt's work is also displayed at the gallery. Hours: Thur. - Sat., 11am-5pm; Sun. noon-5pm; and 4th Fri., 6-9pm. Contact: 910-299-8288 or at ([www.beckfineart.com](http://www.beckfineart.com)).

**ERA 20th Century Furniture and Art Gallery**, 523 South 3rd St., Wilmington. **Ongoing** - Inviting emerging artists of all sorts, to fill the quiet space with cutting edge art that not only is pleasant to view, but also thought-provoking. Unique modern furnishings from the mid-20th century complement the contemporary art. Hours: Wed.-Sat., 11am-5pm or by appt. Contact: 910/612-0542.

**Gallery Citrine**, 17 S 2nd Street, Wilmington. **Ongoing** - Featuring works by BJ Grimmer, PD Chisholm, Kathy Schrum Peck, Nancy Lang Miller, Brooke Eagle, Deb Williams, Meroe Wheatley, Sue Cunningham, Chris Pfund, Donna Launey, and Robin Jones. Hours: Thur.-Sun., noon-4:30pm or by appt. Contact: e-mail to ([gallercitrine@gmail.com](mailto:gallercitrine@gmail.com)) or at (<https://gallercitrine.com/>).

**Janet B. Sessoms Studio@ the ArtWorks**, 200 Willard Street, Wilmington. **Ongoing** - Featuring works by Janet B. Sessoms. Hours: call for hours. Contact: 910/840-0208, e-mail at ([jbsessoms47@ec.rr.com](mailto:jbsessoms47@ec.rr.com)) or at ([www.janetb-sessoms.com](http://www.janetb-sessoms.com)).

continued on Page 67