



Scott Boyle

3 Day Plein Air Workshop

Oct 3 – 5, 2013

Burnsville, NC

www.scottboyleart.com

Join Scott Boyle as he teaches a 3 day plein air workshop in the beautiful mountains of North Carolina. Scott is the creator and moderator of the North Carolina Plein Air Painters NCPAP.ORG and specializes in High Country Painting.

In his workshop he will demonstrate and teach how to capture fleeting light with oil paints. Included in the discussion topics will be, importance of composition, limiting your palette, limiting value ranges, color temperatures, ideas on improving efficiency while painting, supplies, framing, personal websites, and about participating in plein air competitions.

This workshop is suitable for artists who are new to oils or plein air painting as well as the intermediate artists who want to hone their skills painting plein air. Scott will demonstrate each day and give individual attention to the students through the day. Class size will be limited to 12 students.

For more workshop information go to - <http://www.scottboyleart.com/docs/100313-workshop-details-application.pdf>

Toe River Arts Council in Spruce Pine, NC, Offers Works by Potters of the Roan

The Toe River Arts Council in Spruce Pine, NC, will present *New Traditions: Contemporary Perspectives from a Traditional Landscape*, featuring works by members of the Potters of the Roan group, on view in the TRAC Gallery, from Aug. 17 through Sept. 28, 2013. A reception will be held on Aug. 17, from 5-7pm.



Work by Courtney Martin

Whether driving over, driving around, or hiking across its jagged top, everyone on either side of Appalachia's beloved Roan Mountain agrees: it's a sight to see. Along the North Carolina side in Mitchell County, a group of potters has identified with this landscape for nearly fifteen years. "We're connected by geography, but also by creative commonalities and friendships," Potters of the Roan (POTR) member Courtney Martin explains of this 12-member guild of nationally known ceramicists. Her studio near Snow Creek is just a short walk from views of Roan Mountain's distinct ridgeline.

POTR is organized as a self-guided year-round studio tour. Guild members place POTR logo signs near their studios



Work by Jenny Lou Sherburne

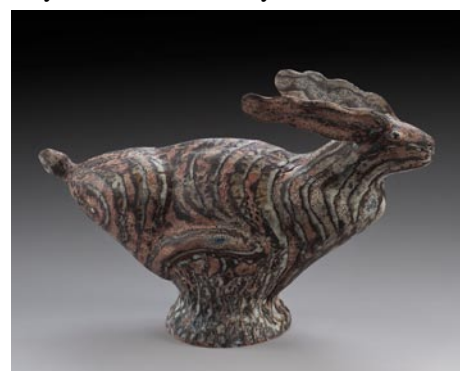
to assist visitors, who come to drive the scenic roads surrounding Roan while following a printed map that connects one studio to the next. This August's exhibition will feature museum-quality works from each member of the guild, displaying more individual pieces than POTR has gathered for any previous exhibition.



Works by Suze Lindsay & Kent McLaughlin

Jerry Jackson is the installer for the
continued above on next column to the right

show. In addition to new work created by each artist, Jackson will be installing an interactive map of the Roan area with the intention of highlighting the private, interior spaces the artists work within and the public, exterior spaces that they take inspiration from. "I have no doubt that POTR is strongly influenced by community and shared, local arts events," says Jackson. "But the solitude provided by Roan Mountain is just as important. Solitude doesn't work for all artists, but this group believes in a way of life in which clay is a daily influence, not only in what they make, but how they live."



Work by Ken Sedberry

Guild members featured in the show hope that the exhibition map, which will include photos and county landmarks, will likewise encourage people to venture out and visit POTR studios. "It only takes one trip to clearly understand the influences of daily surroundings such as earth, food, gardens, animals, and family," says Jackson. "These traits can be found elsewhere in clay communities, but Roan Mountain has a magical way of protecting, teaching,



Work by Stanley Mace Anderson

and influencing. It's inspiring to make the connection in person and follow the work back to its source."

Visitors can expect to see everything from traditional jugs, hand dug clays, and atmospheric firings, to masterful brushwork, playful forms, and narrative sculptures. The body of work created for this exhibition will bridge the traditions of the past with the energy of today, exhibiting the best of POTR in the newly renovated TRAC gallery.

For further information check our NC Institutional Gallery listings, call the Council at 828/682-7215 or visit (www.toeriverarts.org). For info on the Potters of the Roan visit (www.pottersoftheroan.com).

Mica Gallery in Bakersville, NC, Offers Works by David Earl Tomlinson

Mica Gallery in Bakersville, NC, is presenting *Tradition Revisited*, featuring pieces of naturally weathered and salvaged sheet metal quilts by David Earl Tomlinson, on view through Sept. 15, 2013.

The rich patinas found in aged and weathered metals inspire this Asheville, NC, resident and self-taught metalworker. A soulful and accomplished musician, his

continued on Page 21