

# NC Commercial Galleries

continued from Page 58

**Earthbound Arts**, 610 N. Trade St., Winston-Salem. **Ongoing** - Featuring an unique gallery showcasing the nature-related works of Gordon Jones and Lucy Duncan. Original designs in clay, copper, and stained glass as well as handcrafted herbal soaps, sterling and copper jewelry, block print cards, masks, wind chimes, garden art, clay beads, herbal teas, natural incense, beeswax candles and much more. Hours: Tue.-Sat., 11am-6pm. Contact: 336/773-1043 or e-mail at (lucy@earthboundarts.com).

**Fiber Company**, 600 N. Trade St., Winston-Salem. **Ongoing** - A working weaving studio where fiber artists create hand-woven clothing and accessories and carry local artist works on consignment from jewelers, potters, woodworkers, and photographers. Hours: Wed.-Fri., 10am-5pm; Tues. & Sat., 11am-3pm. Contact: 336/725-5277.

**Island Arts On Trade**, 521 N. Liberty St., Ste. 100, in the Artists On Liberty Building, across from the DADA Community Center, Winston-Salem. **Ongoing** - Featuring visual and functional artwork by gallery artist, Gary Campbell. Also, featuring other multicultural artists and mixed media artwork throughout the year. Hours: Fri.-Sat., 1-5pm or by appt. Contact: 336/722-0510.

**Patina**, 217 W. 6th St., Winston-Salem. **Ongoing** - Featuring a unique shop with art by local potters, craftspeople, and painters. Patina also

carries unique clothing, gifts, home accessories and gift baskets. Hours: Tue.-Sat., 10am-6pm. Contact: 336/725-6395 or e-mail at (patinastore@aol.com).

**The Other Half**, 560 North Trade St., Winston-Salem. **Ongoing** - Featuring works by Mary Ann Zotto, Chris Teague, Nic Bernard, Dodie Campbell, Jack Dent, Celeste Chapman-Dent, Ron Propst, Jason Probst, Kathy Townsend and Mike Cowan. Hours: Tue.-Sat., 11am-5pm or by appt. Contact: 336/407-5494 or e-mail at (peeps321@earthlink.net).

**Village Smith Galleries/VSG Fine Arts**, 119 Reynolda Village, near Reynolda House Museum of Art, Winston-Salem. **Ongoing** - American and European watercolors, oils, antique engravings and contemporary works by Gorg, McKnight, Boulanger, Alvar, Nicole Monteran, Stephen White and other gallery artists. National and regional crafts are represented in the fields of ceramic and glass. Hours: Mon.-Sat., 10am-5pm. Contact: 336/723-3653.

**Winterfire Craft Gallery**, 145 Stratford Road, Winston-Salem. **Ongoing** - Featuring pottery by Hank Goodman as well as hand-crafted jewelry, metal sculpture, hand-thrown pottery, art glass, and calligraphy prints. Hours: Mon.-Fri., 10am-6pm; Sat., 10am-5pm & Sun., 11am-5pm. Contact: 336/748-0145 or at (www.winterfiregallery.com).

**Charleston Artist Guild Gallery**, 160 East Bay St., Charleston. **Aug. 1 - 31** - "Moments of Nature," featuring an exhibit of paintings by Jeanne Juhos. A reception will be held on Aug. 2, from 5-8pm. **Ongoing** - Featuring an exhibit of works by over 73 plus members of CAG who display a wealth of talent in different media including, oils, acrylics, pastels, watercolors, photography, printmaking & sculpture. The Gallery is also home for the CAG office. Hours: Daily, 11am-6pm. Contact: 843/722-2454 or at (www.charlestonartistguild.com).

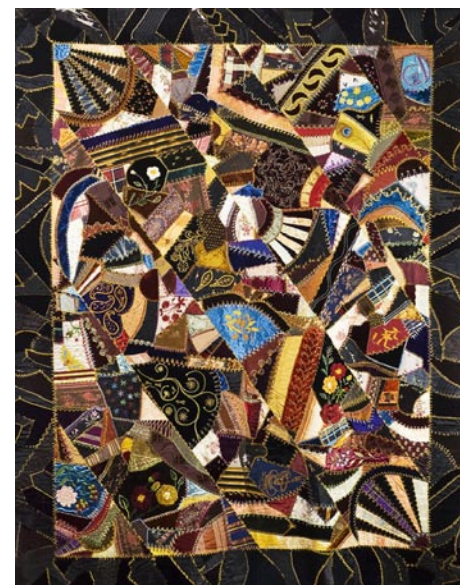
**City Gallery at Waterfront Park**, 34 Pringleau Street, Charleston. **Upper & Lower Level Galleries, Through Aug. 18** - "Past Presence: Works by Robert Epps and William Baldwin". The exhibition combines the vibrant large scale photography of Robert Epps with the city-themed poetry of William Baldwin to create an exhibition of the iconic environs of Charleston. Discovering the contemporary in the old, the sublime in the ordinary, the poetic in the everyday: working at times in tandem, the artists have spent the last four years exploring the ways in which Southern culture, for better or worse, manages to endure and endure. An ever decaying beauty and a quiet/noisy resilience found here in both images and words. Hours: Tue.-Fri., 10am-6pm & Sat.-Sun., noon-5pm. Contact: Call the Office of Cultural Affairs at 843/724-7305 or visit (www.piccolospoleto.com) or 843/958-6484 or (http://citygalleryatwaterfrontpark.com/).

**Gibbes Museum of Art**, 135 Meeting Street, Charleston. **Main Gallery, Through Sept. 15** - "People's Choice: A Community Curated Exhibition". This exhibition seeks to engage members of the community, inviting all to stake a personal claim in Charleston's signature museum by voting for favorite works of art on the People's Choice website (www.gibbespeopleschoice.org). In an effort to gather a variety of voices and diverse opinions, we invited notable people from Charleston and beyond including Mayor Joseph P. Riley, Jr., renowned chef Nathalie Dupree, and event designer extraordinaire, Tara Guérard to share thoughts, opinions and feelings about art. We asked questions such as: Why is art important in your life? What is your first memory of art? and, why are museums important to you? The answers have been inspiring and refreshing. "This exhibition is unlike anything we've done before," says Executive Director Angela Mack. **Rotunda Galleries, Through Sept. 15** - "The Spoleto Watercolors of Stephen Mueller and Carl Palazzolo, From the Collection of David and Carol Rawle," a program of Spoleto Festival USA and the Gibbes Museum of Art. This exhibition features extraordinary watercolor paintings by Stephen Mueller and Carl Palazzolo, created over a period of two decades when the artists visited Charleston during Spoleto season. Inspired by friendship, the rich culture of the Spoleto Festival, and the lush lowcountry environment, Mueller and Palazzolo found a perfect setting to explore the lyrical medium of watercolor in distinctive, though complementary, styles. The exhibition is made possible by the generous support of Gibbes, etc, the Medical University of South Carolina, The Albert Sottile Foundation, The Joanna Foundation, and South Carolina Bank and Trust. **First, Second and Third Floor Galleries, Ongoing** - "The Charleston Story". Drawn from the museum's permanent collection, this exhibition highlights significant people, places, and periods from Charleston's beginning as a British colony, through the American Revolution, the later ravages of the Civil War, and culminating today as a culturally diverse and dynamic community. **Ongoing** - "Hands On!" This exhibit features works of art selected from the Gibbes Museum of Art's touch collection. **Museum Shop** - Now offering the inventory of the Tradd Street Press, reproductions of works by Elizabeth O'Neill Verner among other exhibit related art objects. Hours: Tue.-Sat., 10am-5pm & Sun., 1-5pm; closed Mon. Admission: Yes. Contact: 843/722-2706 or at (www.gibbesmuseum.org).

**Karpeles Manuscript Museum**, 68 Spring Street, corner of Spring & Coming Streets, Charleston, in the former St. James Methodist Church, founded in 1797. **Ongoing** - Featuring historically important documents from our permanent Charleston collection. Recently added to the Permanent Collection - a special and unique exhibit of Egyptian Stone Carvings dating from 1492 BC. Free parking and free admission. Hours: Tue.-Sat., 11am-4pm. Closed on holidays. Contact: 843/853-4651.

**Saul Alexander Foundation Gallery**, Charleston County Public Library, 68 Calhoun St., Charleston. **Through Aug. 17** - "Interspatial," featuring an exhibition of astronomical artwork by Alizey Khan. Khan's work explores the properties of light and spatial depth in an incomprehensibly vast space. "Interspatial" encompasses the variety of media she chooses to work in, including paintings on canvas, 3D paintings created with layers of resin and acrylic paint, and etchings. **Aug. 18 - 31** - "Learning to see the Lowcountry," featuring works by Susana Berdecio, who

hopes that her exhibit allows natives to perceive the Lowcountry in a new light and introduces visitors to the endless possibility of our inspiring surroundings. Hours: Mon.-Thur., 9am-8pm; Fri. & Sat., 9am-6pm; and Sun. 2-5pm. Contact: Frances Richardson at 843/805-6803 or at (www.ccpl.org).



Catherine Mazyck's crazy quilt was made around 1885, from the collections of The Charleston Museum. Photo courtesy of The Charleston Museum.

**The Charleston Museum**, 360 Meeting Street, Charleston. Founded in 1773, is America's first museum. **Through Mar. 10, 2014** - "Our Duty was Quite Arduous," part of the Sesquicentennial exhibit to share archaeological finds from "Little Folly Island" Civil War Site. The Union Encampment on Little Folly Island, 1863- 1865. This original exhibition presents Civil War artifacts recovered by Charleston Museum archaeologists from the beach of "Little Folly Island." Accelerated erosion caused by Hurricane Hugo in September 1989 uncovered a wealth of materials from the Federal presence there during the Civil War. Most were remarkably preserved and now provide a rare glimpse into the daily lives of Union soldiers garrisoned on Folly Island. **Historic Textiles Gallery, Through Aug. 4** - "Early 20th Century Quilts". This exhibit spans the tumultuous years from 1900 through the 1930s, displaying the patterns and fabrics that make this era's quilts so distinctive. Periods of turmoil in the early 20th century, sparked by World War I, the coming of the second World War and social change born out of the Suffrage Movement, the Roaring 20s and the Great Depression, were met with renewed vigor by quilters across the country. **Aug. 17 - Mar. 30, 2014** - "Quintessential Quilts," featuring an original exhibition of some of the Museum's finest examples of quilting from the late 18th century through the 20th century. Included will be representative work from the major quilting categories - whole-cloth, chintz appliqué, pieced, traditional appliqué, paper-template pieced or mosaic, crazy and modern. Several quilts included in the exhibition are recent donations and will be exhibited for the first time. **Ongoing** - Featuring the most extensive collection of South Carolina cultural and scientific collections in the nation, it also owns two National Historic Landmark houses, the Heyward-Washington House (1772) and the Joseph Manigault House (1803), as well as the Dill Sanctuary, a 580-acre wildlife preserve. Admission: Yes. Hours: Mon.-Sat., 9am-5pm & Sun., 1-5pm. Contact: 843/722-2996 or at (www.charlestonmuseum.org).

ALTERNATE ART SPACES - Charleston **Ashley River Tower**, Public area at Medical University of South Carolina, Charleston. **Ongoing** - "Contemporary Carolina Collection @ Ashley River Tower," featuring the largest collection of original, contemporary South Carolina art on permanent display, including 885 works by 53 talented artists, sculptors and photographers in South Carolina. Artists included are: Lucille Akinjobe, Jack Alterman, Thomas Blagden, Jr., Carl Blair, Patti Brady, Keith Brown, Julia Cart, Eva Carter, Jocelyn Châteauevert, Lese Corrigan, Townsend Davidson, Linda Fantuzzo, Buddy Folk, Squire Fox, Mary Edna Fraser, Cassandra Gillens, Anthony Green, Jon Holloway, Ann Hubbard, Lisa Salosaari Jasinski, Erik Johnson, Kim Keats, Arianne King Comer, Kit Loney, Paul Mardikian, Nancy Marshall, Paul Matheny, John McWilliams, Sue Middleton, Marge Moody, Gordon Nicholson, Jane Nodine, Marcelo Novo, Karin Olah, Matt Overend, Rick Rhodes, Ed Rice, Molly B. Right, Susan Romaine, Kristi Ryba, Virginia Scotchie, Laura Spong, Tom Stanley, Christine Tedesco, Colleen Terrell, Leo Twiggs, Tjelda Vander Meijden, Mary Walker, Sue Simons Wallace, Joe Walters, Sam Wang, Enid Williams, Manning Williams, and Paul Yanko. Hours: daily, 8:30am-5pm. Contact: Kathleen Ellis, Director of National Communications, MUSC, at 843/792.5602 or e-mail at (ellisk@musc.edu).

# SC Institutional Galleries

## Allendale

**Salkehatchie Arts Center**, 939 N. Main St., Allendale. **Ongoing** - Featuring a retail store offering works by artists from the Salkehatchie region including Allendale, Bamberg, Barnwell, Colleton, and Hampton Counties. Hours: Tue.-Sat., 10am-5pm. Contact: 803/584-6084.

## Aiken

**Aiken Center for the Arts**, 122 Laurens St., SW, Aiken. **Aug. 2 - 29** - "2012 South Carolina Watermedia Society Traveling Exhibition," featuring the top 30 award-winning works from the 2012 exhibition. Hours: Mon.-Sat., 10am-5pm. Contact: 803/641-9094 or at (www.aikencentre-forthearts.org).

## Anderson

**Bay3 Artisan Gallery**, located in the Arts Warehouse, 110 Federal St., Anderson. **Ongoing** - Featuring works by Marion Harvey Carroll, Liz Cox-Smith, John Davis, Lynn Felts, Edie Hamblin, Ann Heard, Ruth Hopkins, Deane King, Kate Krause, Rosemary Moore, Lea Mouhot, Nancy Perry, Diann Simms, Ellen Spainhour, Armi Tuorila and Heather Vaughn. Co-sponsored by the Anderson Arts Center. Hours: Tue.-Fri., noon-5pm, & Sat., 10am-1pm. Contact: 864/716-3838 or at (www.andersonartscenter.org).

## Beaufort Area

**Gallery @ ARTworks**, home of the Arts Council of Beaufort County, 2127 Boundary St., near K-Mart, in Beaufort Town Center, Beaufort. **Through Aug. 24** - "Treasure Sale," featuring a variety of art by a variety of artists. The show is a prelude to the annual meeting-party on Aug. 24 (everyone's invited) and sales benefit the community arts center: art works, art fun, art now. **Ongoing** - Featuring the work and creative processes of new and emerging artists. Hours: Mon.-Fri., 10am-5pm. Contact: 843-379-2787 or at (www.beaufortcountyarts.com).

**Beaufort Art Association Gallery**, 913 Bay Street, across the street from the Clock Tower, Beaufort. **Through Aug. 3** - Featuring an exhibit of works by Lynne Morgan. **Aug. 5 - Sept. 14** - Featuring an exhibit of works by Michael Pearson. A reception will be held on Aug. 9, from 5:30-7:30pm. **Ongoing** - New works by more than 90 exhibiting members of the Beaufort Art Association Gallery - exhibits and featured artists change every six weeks. In addition to framed paintings in a variety of media, the gallery offers prints, photographs, unframed matted originals, jewelry, sculpture, ceramics and greeting cards. Hours: Mon.-Fri., 10 am-5pm. Contact: 843/521-4444 or at (www.beaufortartassociation.com).

## Bluffton



Work by Murray Sease

**Society of Bluffton Artists Gallery/Learning Center**, 8 Church Street, corner of Calhoun and Church Street, Bluffton. **Aug. 5 - Sept. 1** - "Think Cool," featuring a collection of paintings, photography and sculpture by members of the Society of Bluffton Artists. A reception will be held on Aug. 11, from 3-5pm. **Ongoing** - Featuring works in a variety of mediums by over 100 area artists, with all work moderately priced. Changing shows every six weeks. Hours: Mon. 11am-3pm & Tue.-Sat., 10am-5pm. Contact: 843/757-6586 or at (www.sobagallery.com).

## Camden

**Bassett Gallery**, Fine Arts Center of Kershaw County, 810 Lyttleton St., Camden. **T -** Hours: Mon.-Fri., noon-6pm. Contact: 803/425-7676, ext. 306 or at (www.fineartscenter.org).

## Charleston

**Avery Research Center for African History and Culture**, at the College of Charleston, 125 Bull St., Charleston. **Denmark Vesey Conference Room, Ongoing** - "KABOH: A Legacy of Twelve." Charleston Quilter Dorothy Montgomery made "KABOH" in honor of the "Priscilla" story. The quilt was in the possession of Dr. Joseph Opala who donated it to the Avery Research Center in July, 2008. **Corridor (2nd Floor), Ongoing** - "Esau Jenkins: A Retrospective View of the Man and His Times" This exhibition was developed in 1991 by the Avery Institute. After its display in Charleston it traveled throughout the state of SC under the auspices of the State Museum Traveling Exhibition Program. Consisting of (15) panels measuring 24" x 36", the exhibit chronicles the myriad of activities Mr. Jenkins was intimately involved in. Additionally, it highlights his leadership skills as a conscious and compassionate community activist, organizer, entrepreneur and Civil Rights leader. Hours: Mon.-Fri., 10am-5pm & Sat., noon-5pm. Admission: by donation. Contact: 843/953-7609 or visit (www.cofc.edu/avery).