

# SC Institutional Galleries

continued from Page 33

**Through Aug. 27** - "Celebrate Jamestown," featuring the works of several accomplished Lowcountry African American artists to commemorate the Jamestown, SC, settlement of freed slaves. Featured artists include Arianne King Comer, Caroline Lamkin, Alvin B. Glen, and Georgette Wright Sanders. The exhibit is part of the "Celebrate Jamestown" events this summer, which also include separate poetry and spoken work events depicting the culture and traditions of African-Americans that will take place at the Drs. Bruce and Lee Foundation Library on Aug. 27 from 2:30 to 5pm. Hours: Mon.-Thur., 9am-8:30pm; Fri.-Sat., 9am-5:30pm; & Sun., 2-5:45pm. Contact: 843/413-7060 or at ([www.florenceclibrary.org](http://www.florenceclibrary.org)).

## Gaffney

**Cherokee Alliance of Visual Artists Gallery**, 210 West Frederick Street, located in the former Old Post Office building one street over from the Main Street with the City of Gaffney Visitors Center, Gaffney. **Ongoing** - Featuring works in a variety of media by Cherokee County artists. Hours: Tue.-Fri., 8:30am-5pm & Sat., 9am-1pm. Contact: 864/489-9119 or e-mail at ([cavagallery@yahoo.com](mailto:cavagallery@yahoo.com)).

## Greenville

**Downtown Greenville** - "First Fridays," featuring a gallery crawl presented on the first Fri., of the month from 6-9pm. Visit galleries throughout the downtown area. For info: ([www.fristfridaysonline.com](http://www.fristfridaysonline.com)).

**Greenville Center for Creative Arts**, 25 Draper Street, Greenville. **Ongoing** - Home to 16 studio artists. Hours: Mon.-Fri., 9am-5pm & Sat., 11am-3pm. Contact: call 864/735-3948 or at ([www.artcentergreenville.org](http://www.artcentergreenville.org)).

**Greenville County Museum of Art**, 420 College Street, Greenville. **Through Sept. 11** - "Jasper Johns". Jasper Johns is the world's most critically acclaimed living artist. His work bridges the immediate post-World War II modernist trends of Surrealism and Abstract Expressionism with subsequent movements of the 1960s, including Pop art, Minimalism, and Conceptual art. While his reputation is international, Johns has deep roots in South Carolina. Born in 1930, he grew up in Allendale, the Columbia area, and Sumter; he attended the University of South Carolina for three semesters before moving to New York to pursue his career in art. **Through Sept. 11** - "Right Before Your Very Eyes: Art + History". Drawn from the GCMA's permanent collection, this exhibition invites viewers to consider the narratives of specific people and places that together tell the story of the nation. Organized thematically, the exhibition explores the pottery of potter and poet David Drake, who lived as a slave in South Carolina's Edgefield District. The stories of other slaves and freedmen are highlighted in *Stony the Road We Trod*, while *When Worlds Collide* depicts a few of America's most turbulent conflicts, both domestic and foreign. **Through Sept. 11** - "The Poetry of Place". Amid the cacophony of an election year, the exhibition offers a respite and reminder that our country, and particularly the South, is home. From the colorful streets of New Orleans to the misty bayou of Louisiana to the undulant Smoky Mountains, "The Poetry of Place" invites you to re-discover America, where a picture is worth a thousand words. **Ongoing** - "Grainger McKoy: Recovery Stroke". Grainger McKoy (born 1947) moved with his family at a young age to Sumter, South Carolina. McKoy attended Clemson University, earning a degree in zoology, while also studying architecture. After graduating, McKoy apprenticed for 18 months with the renowned bird carver Gilbert Maggioni in Beaufort, South Carolina. McKoy initially produced realistic carvings, but slowly began transforming these intricately carved birds into gravity-defying sculptures that played with form and space, while continuing to accurately render each species in detail. His work has been shown at the High Museum of Art, Brandywine River Museum, Brookgreen Gardens, and many other galleries. **Ongoing** - "South Carolina Icons". Consider the work of three African-American artists from South Carolina, David Drake, William H. Johnson, and Merton Simpson. Their work echoes the stories of slavery, the struggle for equality, and the Civil rights movement. Admission: Free. Hours: Wed.-Sat., 10am-6pm and Sun., 1-5pm. Contact: 864/271-7570 or at ([www.gcma.org](http://www.gcma.org)).

**Lipscomb Gallery**, South Carolina Governor's School for the Arts and Humanities, 15 University St., Greenville. **Ongoing** - We feature several exhibitions throughout each year - our own students and faculty, plus many guest art-

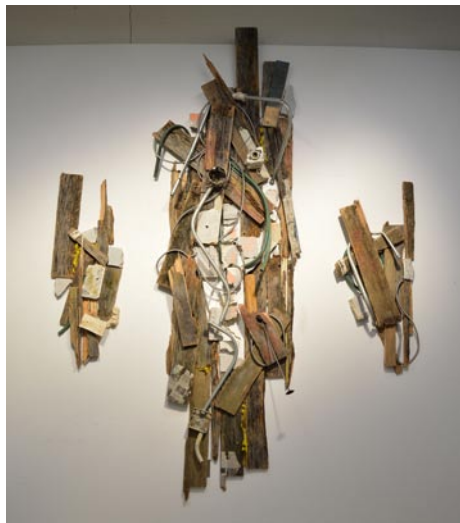
ists. Hours: Mon.-Fri., 10am-4pm. Visitors are asked to sign in at the Administration Building's front desk before entering campus. Contact: 864/282-3777.

**Metropolitan Arts Council Gallery**, 16 Augusta Street, Greenville. **Ongoing** - Featuring works by Greenville area artists. Hours: Mon.-Fri., 9am-5pm. Contact: 864/467-3132, or at ([www.greenvillearts.com](http://www.greenvillearts.com)).

**Museum & Gallery**, Bob Jones University, Wade Hampton Boulevard, Greenville. **Ongoing** - "Likely and Unlikely Pairings," featuring a fascinating juxtaposition of art and mundane objects revealing a variety of viewpoints. Through this special comparative display, the unique presentation serves as an engaging tool for all viewers interested in understanding the many facets of art, culture, and thought. **Ongoing** - Permanent exhibition of the finest collection of religious art in America, including works by Rubens, Botticelli, and Van Dyck. Offering visitors a 60-minute audio-guided tour of over 40 favored works for a modest fee. Hours: Tue.-Sun., 2-5pm. Contact: 864/242-5100, Ext. 1050 or at ([www.bjumg.org](http://www.bjumg.org)).

**Museum & Gallery at Heritage Green**, Buncombe and Atwood Streets, downtown Greenville. **Through Aug. 2017** - "The Art of Sleuthing," inviting sleuths of all ages to explore the intrigues of forgery, provenance, steganography and Nazi-looted art. "It's coming to see art in a new way," said M&G curator John Nolan. Nolan's description is accurate as *The Art of Sleuthing* blends both the creative and scientific aspects of art together in an enticing manner. A primary highlight of the exhibit showcases two stellar examples of forgery, including a loan from the National Gallery of Art in Washington, DC. Titled "The Smiling Girl", this piece was originally attributed to Vermeer until closer investigation proved it a fraud. Continuing the theme, the forged "Still Life with Fruit" on loan from the Nasher Museum of Art at Duke University exemplifies modern art fakes. Admission: Yes. Hours: Tue.-Sat., 10am-5pm and Sun. 2-5pm. Contact: 864/770-1331 or visit M&G's website at ([www.bjumg.org](http://www.bjumg.org)).

**RIVERWORKS Gallery**, Suite 202, Art Crossing on the Reedy River in downtown Greenville. **Through Aug. 21** - "Critters". Trapped in the surreal, forced to adapt to human-made forces yet retaining our idealization of cute, maybe even warm and fuzzy, these are the critters created by sculptor, Anne Lemanski, printmaker, Meghan O'Connor, and photographer, Alice Sebrell. A reception will be held on Aug. 5, from 6-9pm. Hours: Tue.-Fri., 1-5pm and Sun., 1-5pm. Contact: call 864/271-0679 or e-mail to ([fleming.markel@gvltec.edu](mailto:fleming.markel@gvltec.edu)).



Work by Zac Benson

**Thompson Gallery**, Thomas Anderson Roe Art Building, Furman University, Greenville. **Aug. 26 - Oct. 2** - "Soul Stirrings," featuring works by Zac Benson. A reception and talk will be held on Sept. 2, from 6-7:30pm. Hours: M-F, 9am-5pm. Contact: 864/294-2074.

ALTERNATE ART SPACES - Greenville **Centre Stage Theatre Gallery**, 501 River Street, Greenville. **Ongoing** - Featuring works by visual art members of MAC. Exhibits are offered in collaboration with the Metropolitan Arts Council. Hours: Tue.-Fri., 2-6pm & 2 hr. prior to shows. Contact: MAC at 864/467-3132 or at ([www.greenvillearts.com](http://www.greenvillearts.com)).

**Whole Foods Market**, café area, 1140 Woodruff Rd., Greenville. **Ongoing** - Featuring rotating exhibits of works by members of Upstate Visual Arts (changing every 60 days). Hours: Mon.-Thur., 8am-9pm; Fri. & Sat., 8am-10pm & Sun., 9am-9pm. Contact: 864/232-4433 or at ([www.upstatevisualarts.org](http://www.upstatevisualarts.org)).

## Hartsville

**Black Creek Arts Center**, 116 West College Ave., Hartsville. **Jean & James Fort Gallery, Ongoing** - Featuring works by local and regional artists. Hours: Tue.-Thur., 10am-1pm and 2-5pm; Fri., 10am-2pm and 1st Sat. of the month 10am-1pm. Contact: 843/332-6234 or at ([www.blackcreekarts.org](http://www.blackcreekarts.org)).

**Cecelia Coker Bell Gallery**, Coker College, Gladys Coker Fort Art Building, near Third Street (on the Home Avenue side), Hartsville. **Through Aug. 30** - "11th Annual Student Summer Exhibition". The exhibit features the art faculty's selection of student works from the past year and includes examples of painting drawing ceramics design sculpture and mixed media. Summer Hours: Mon., Wed., & Fri., 10am-4pm. Contact: 843/383-8156 or at (<http://www.wix.com/cokerart-gallery/ccgb>).

**Hartsville Museum and Sculpture Courtyard**, 222 North Fifth Street, corner of Fifth Street and Home Avenue, Hartsville. **Ongoing** - Housed in a 1930's Post Office Building, the museum has kept many of the unique architectural features of the building. The skylight, original to the building, has been retrofitted with stained glass panels depicting the flora and fauna significant to the area. The Sculpture Courtyard added in 2000 features many different types of sculpture. The Showcase Gallery presents special exhibits focusing on history, the arts or present day events. Hours: Mon.-Fri., 10am-5pm (closed from noon-1pm on Fri.) and Sat., 10am-2pm. Contact: 843/383-3005 or at ([www.hartsvillemuseum.org](http://www.hartsvillemuseum.org)).

## Hilton Head Island Area

**Hilton Head Regional Healthcare Gallery**, Coastal Discovery Museum, at Honey Horn, off Highway 278, across from Gumtree Road, Hilton Head Island. **Through Sept. 8** - "Oysters: Past, Present, and Future," featuring historic photographs, artifacts, mariculture and conservation tools, and artistic representations that tell the story of the amazing oyster at the Coastal Discovery Museum. Included in the exhibition are over a dozen photographs from the Library of Congress' National Child Labor Committee (NCLC) collection that were taken by Lewis Hine between 1908 and 1913. **Ongoing** - This beautiful 69-acre site will serve as the Museum's base for programs highlighting the cultural heritage and natural history of the Lowcountry. And, it will provide a signature venue for community events for people of all ages. The opening includes the renovation of a 6,000 sq. foot former hunting retreat, renamed the "Discovery House," containing the Museum's new interactive exhibits, temporary gallery space and community meeting rooms. Hours: Mon.-Sat., 9am-4:30pm & Sun., 11am-3pm. Contact: 843-689-6767 ext. 224 or at ([www.coastaldiscovery.org](http://www.coastaldiscovery.org)).

## Lake City

**Jones-Carter Gallery**, 105 Henry Street, next to The Bean Market, Lake City. **Through Aug. 13** - "Celebration: Alexi Torres". Torres is a Cuban-American artist who currently resides in Atlanta, GA. The exhibition, *Pieces of Peace*, combines his latest series *Celebration*, a group of large-scale oil paintings with words of empathy and celebration, with his *Spiritual Security* series, a grouping of large scale portraits of police officers in zen-like positions, to have a larger and much needed conversation about empathy, oneness, and the celebration of life within the context of today's world filled with violence. The exhibition also aims to raise awareness of the value of positive thoughts and actions with our younger generations. Hours: Tue.-Fri., 10am-6pm & Sat., 11am-5pm. Contact: call 843-374-1505 or at ([www.jonescartergallery.com](http://www.jonescartergallery.com)).

## Lancaster

**The Springs House**, Lancaster County Council of Arts, 201 West Gay Street, former City Hall, Lancaster. **Through Aug. 31** - "Observe and Assemble," featuring a paired exhibit by Cory Williams and Anna Melton from Asheville, NC. These two artists construct their work using components they've collected--Williams' creative process starts with thinking about the environment in which he uses metal pieces to weld his work into three-dimensional objects. Williams describes his work by stating, "The quiet nature of my work is intended to be welcoming. Simple lines and composition are elements I strive for, hoping to invite the view to take a closer look at detail". Melton gathers data in the form of hundreds of photographs taken from one pivot point. She then chooses images to combine into a final panoramic composition. These images, containing up to 8 gigabytes of data and called "gigapans", depicts her subjects in settings that show something important about their lives. The printed photographs are huge, many of them 10 to 15 feet long. Hours: Mon.-Thur., 8am-5pm; Fri., 8am-3pm; or by appt. Contact: 803/285-7451 or at ([www.lccarts.net](http://www.lccarts.net)).

**USC Lancaster Native American Studies Center**, 119 South Main Street, Lancaster. **Ongoing** - The Center is 15,000 square foot facility in historic downtown Lancaster. Guests will have the opportunity to tour the NAS Center's gallery spaces, archives, classrooms, and archaeology, language, and audio-visual labs. Home to the world's largest collection of Catawba Indian pottery, the NAS Center will offer exhibits of regional Native American Art, classes and programs focused on Native American history, culture, archaeology, folklore, and language. Hours: Tue., Wed., Fri., & Sat., 10am-5pm; Thur., 10am-7pm; of Mon. by appt only. Contact: 803/313-7172 or visit (<http://usclancaster.sc.edu/NAS/>).

## Laurens

**The Artist's Coop**, 113 E. Laurens St., on the Historic Downtown Square., Laurens. **Ongoing** - Featuring works by over 50 cooperative members, including paintings, jewelry, pottery and weavings. Also art classes for children and adults. Hours: Tue.-Fri., 10am-5:30pm & Sat., 10am-3pm. Contact: 864/984-9359 or at ([www.laurensartistscoop.org](http://www.laurensartistscoop.org)).

## Marion

**Marion County Museum**, 101 Wilcox Avenue, Marion. **Ongoing** - Changing exhibits are displayed in two galleries downstairs. These can be local exhibits, or traveling exhibits from the South Carolina State Museum's collections. The Magnolia Room of the museum is furnished with lovely antiques once used in the Aiken-Rhett House in Charleston. These pieces were a gift from the Charleston Museum. The upstairs galleries feature a turn-of-the-century classroom, a farm room, and a variety of displays concerning the people and places of Marion County. Hours: Tues.-Fri., 9am-noon & 1-5pm. Contact: 843/423-8299 or at (<http://www.marionsc.org/museum>).

## McCormick

**The MACK**, McCormick Arts Council Gallery, 115 Main Street, located in the historic Keturah Hotel, McCormick. **Ongoing, The Artisans Gallery Shop at the MACK** - Featuring works of over 30 artisans including paintings, pottery, jewelry, jacks, gourds, woodworking, textiles, soaps and more. Hours: Mon.-Sat., 10am-4pm. Contact: 864/852-3216 or at (<http://mccormickarts.org/>).

## Mount Pleasant

**Sweetgrass Cultural Arts Pavilion**, Mount Pleasant Memorial Waterfront Park, 99 Harry M. Hallman, Jr. Blvd., under the bridge, Mount Pleasant. **Ongoing** - The pavilion is a tribute to the generations of men and women who have carried on this African tradition for more than three centuries. Kiosks and panels tell the history of this unique craft, and the open-air facility provides a venue for local basketmakers to display and sell their wares. Hours: daily, 9am-5pm. Contact: 800/774-0006 or at ([www.townofmountpleasant.com](http://www.townofmountpleasant.com)).

## Myrtle Beach / Grand Strand

**Chapin Park**, 1400 Kings Hwy and 16th Ave. N., Myrtle Beach. **Oct. 8 & 9, & Nov. 5 & 6, 2016** - "44th Annual Art in the Park - Show & Sale," sponsored by Waccamaw Arts and Crafts Guild. We will have over 60 artists from the East Coast, as far away as TN, with about 20 of those artists from our local area. Typical art will include paintings, woodworking, photography, jewelry, fabric, glass, metal, pottery, leather and stone. Free admission and Kid friendly. **2017 Chapin Dates include: Apr. 22 & 23; June 24 & 25; Oct. 7 & 8; and Nov. 4 & 5.** For info call JoAnne Utterback, 843/446-3830 or at ([www.artsyparksy.com](http://www.artsyparksy.com)).

**Valor Memorial Park**, 1120 Farrow Parkway, The Market Common, Myrtle Beach. Valor Park, at The Market Common, in Myrtle Beach. **Nov. 12 & 13, 2016** - "Waccamaw Arts and Crafts Guild's 44th Annual Art in the Park". We will have over 60 artists from the East Coast and as far away as Tennessee with about 20 of those artists from our local area. Typical art will include paintings, woodworking, photography, jewelry, fabric, glass, metal, pottery and stone. No admission charge. Child and Pet Friendly! **2017 Market Common Valor Park Dates include: Apr. 29 & 30 and Nov. 11 & 12.** Contact: JoAnne Utterback at 843/446-3830 or ([www.artsyparksy.com](http://www.artsyparksy.com)).

**Franklin G. Burroughs • Simeon B. Chapin Art Museum**, 3100 South Ocean Blvd., beside Springmaid Beach, Myrtle Beach. **Through Sept. 10** - "The Art of the Brick®," an exhibition featuring large-scale sculptures created out of iconic LEGO® bricks by New York-based artist Nathan Sawaya. The "Art of the Brick®" is one of the largest and most popular art exhibits touring the globe. CNN hailed the exhibition as one of the top twelve "must-see exhibitions in the world." Hours: Tue.-Sat., 10am-4pm & Sun., 1-4pm.

continued on Page 35