

WELLS GALLERY



GLENN HARRINGTON

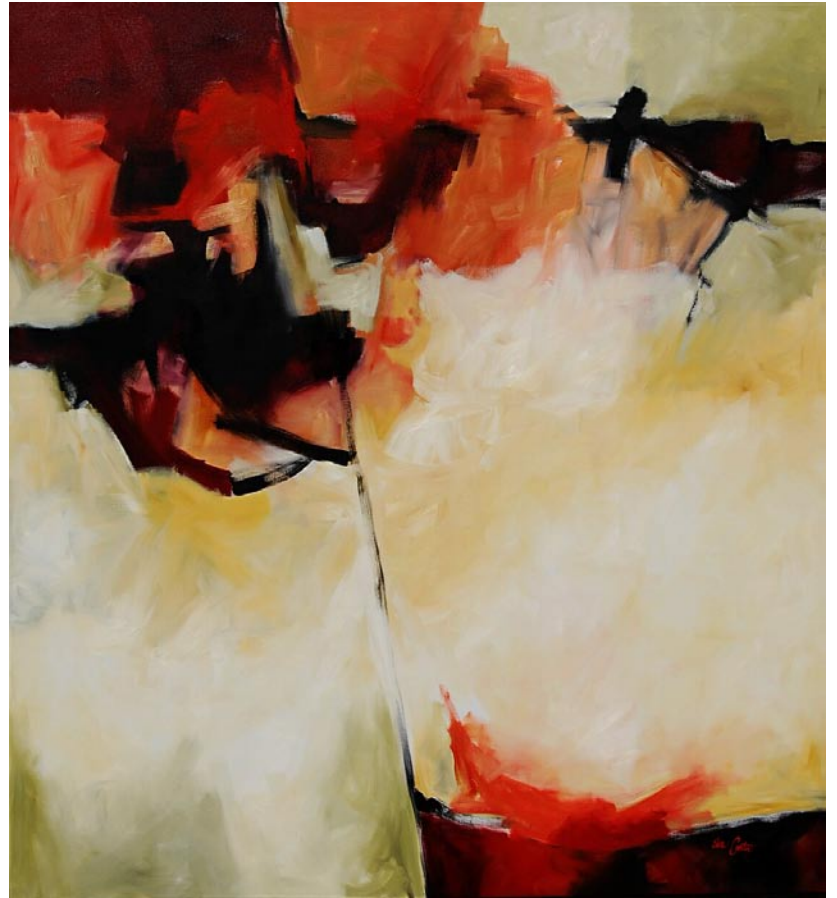
UNDER THE ROSES, 30x40, AND BAIT FISHING, 18x24, BOTH OIL ON LINEN

THE SANCTUARY AT KIAWAH ISLAND

1 SANCTUARY BEACH DR, KIAWAH, SC 29455

843.576.1290

WWW.WELLSGALLERY.COM



Fracture

Oil on Canvas, 72 x 66 inches

Eva Carter

Studio

6696 Bears Bluff Road
Wadmalaw Island, SC 29487

By Appointment Only

Please call (843) 478-2522

www.EvaCarterGallery.com

City of Charleston, SC, Offers Exhibit of Works by Yoruba Artists

The City of Charleston Office of Cultural Affairs is presenting *Sixteen Crowns: Manifestations of Ase*, on view at the City Gallery at Joseph P. Riley, Jr. Waterfront Park, through Aug. 28, 2016. A curatorial lecture by Dr. Ade Ofunniyin and Jody Berman will be held on Aug. 6 at 2pm. These events are free and open to the public.

Sixteen is the number of the cosmos. According to Yoruba belief, when the world was created, it spread out from an original palm tree that stood at the center of the world with sixteen branches, forming the four cardinal points and the sixteen original quarters of Ile-Ife. *Sixteen Crowns: Manifestations of Ase* amplifies the grace, majesty, and beauty of an ancient culture as reflected through art and performance, presenting paintings, drawings, textiles, and sculptures by Yoruba artists. The selected works, co-curated by Dr. Ade Ofunniyin and Jody Berman, reflect a system of belief and virtue that has sustained millions of Yoruba men and women throughout the African diaspora, from those who survived the middle passage to the Americas where they were enslaved, to those who continue to seek out and find comfort, courage, genius, and strength through connection and communication with the divine.

The timing of the exhibition coincides with the international prominence and universal acknowledgement and appreciation of Yoruba people and their contributions to human kind, including an extensive visit to the United States by His Imperial Majesty, the Ooni of Ife in June, 2016. This exhibition examines the artwork of eleven artists of the Yoruba diaspora, and anticipates a more ambitious exhibition in the future that will include performance and experiential elements beyond the walls of the gallery.

The works selected for this exhibition include sculpture, paintings, beadwork,



"Masquerade of Orisa Sango" by Orisanmi Kehinde Odesanya

and tapestries by Yoruba artists Yinka Adeniyemi, Olusegun Agunsoye, Orisanmi Kehinde Odesanya, Onabamiiero Ogunloye, Fawele Okunle, Ojo Kunle, Ilor Mayor, Adeniji Adeyemi, Gbenga Makinde, Odu-sina Taiwo, and Yaw Shangofemi Owusu.

The work selected for exhibition in *Sixteen Crowns* is mostly from the personal collection of Dr. Ade Ofunniyin. Dr. Ofunniyin is an Ifa priest and anthropologist; he conducts research in the Yoruba diaspora. Dr. Ofunniyin, through his organization Gullah Society, supports communities of artists in Osogbo and Ile Ife, Nigeria by providing art supplies, financial support, and opportunities for the exhibition of their works. Dr. Ofunniyin holds a Chieftaincy title, Orisagbala in Ifon-Orulu Kingdom, Osun State, Nigeria, West Africa. He is an adjunct professor at the College of Charleston. His current research focuses on the Africanisms in Gullah Geechee language and traditions.

Jody Berman is a PhD candidate in the field of Art History, at the University

continued above on next column to the right

of Florida. She wrote her Masters thesis on Charleston blacksmith, Yaw Owusu Shangofemi, an apprentice of the late Philip Simmons. She has taught at Brooklyn College and managed Laurence Miller Gallery in New York City. After living in New York City, Berman returned to Gainesville, FL, to pursue her PhD in Art History under Dr. Robin Poyner and Dr. Paul Ortiz. Her present research focuses on African American Art and History. She

is working on her dissertation, "Race, Humor and Subversion in the work of Five Artists". Berman has presented her research at several conferences including the 2015 International Summit on Human and Civil Rights in Atlanta, GA.

For further information check our SC Institutional Gallery listings, call the gallery at 843/958-6484 or visit (www.charleston-sc.gov/citygallery).

Charleston Museum in Charleston, SC, Presents Look at Historic Plantations

The Charleston Museum in Charleston, SC, will present *Black and White: Plantation Scenes of South Carolina*, an exhibit curated by Archivist and Collections Manager, Jennifer McCormick, on view in the Museum's Lowcountry Image Gallery, from Aug. 2, 2016, through Jan. 31, 2017.

South Carolina's Lowcountry plantations, producing both rice and Sea Island cotton, were once a major source of revenue for the region's wealthy elite. The use of enslaved labor to grow and harvest these crops created a unique existence between slave and owner that required a close but vastly different lifestyle. This exhibit will feature images of plantation houses and slave cabins along with the fields and rivers that once intertwined the lives of black and white inhabitants.

McCormick explains, "The photographers of the early 1900s understood the importance of photographing both the black and white people of Charleston and the surrounding plantations. Because of this understanding they were able to capture snapshots of the two very different ways of life on a plantation, even after



the Civil War and emancipation, allowing both present and future generations to see history rather than just read history."

A 501(c)(3) nonprofit organization, The Charleston Museum, founded in 1773, is America's first museum. Holding the most extensive collection of South Carolina cultural and scientific materials in the nation, it also owns two National Historic Landmark houses, the Heyward-Washington House (1772) and the Joseph Manigault House (1803), as well as the Dill Sanctuary, a 580-acre wildlife preserve.

For further information check our SC Institutional Gallery listings or visit (www.charlestonmuseum.org).

The deadline each month to submit articles, photos and ads is the 24th of the month prior to the next issue. This will be Aug. 24th for the September 2016 issue and Sept. 24 for the October 2016 issue.

After that, it's too late unless your exhibit runs into the next month. But don't wait for the last minute - send your info now.

And where do you send that info?

E-mail to (info@carolinaarts.com).