

Triangle Art Works is a non-profit organization dedicated to providing services, support and resources to the visual and performing arts and creative industries.

Triangle Art Works can help you connect quickly and easily with the arts community to find arts-related groups, resources, jobs, and news.

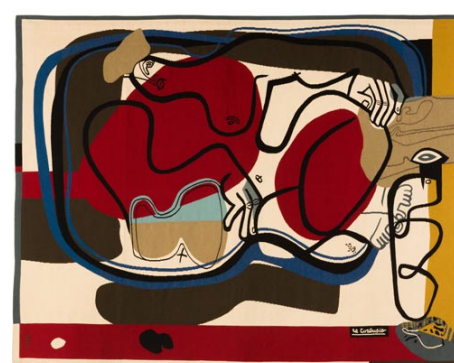
WWW.TRIANGLEARTWORKS.ORG
 INFO@TRIANGLEARTWORKS.ORG
 FACEBOOK.COM/TRIANGLEARTWORKS
 TWITTER: @TRIARTWORKS

CONNECT • INFORM • CREATE • SUPPORT • PROMOTE



Work by Mimi Kato

The Columbia Museum of Art in Columbia, SC, is presenting *Mimi Kato: Ordinary Sagas*, on view through Sept. 8, 2019. Born and raised in Nara, Japan, Mimi Kato has lived in the United States since 1998. She draws on the rich history and visual traditions of Japanese culture as well as the absurd everyday elements of contemporary life and merges them in imaginary landscapes. Kato has worked in video, land art, and other media, but *Ordinary Sagas* showcases the artist's lengthy process that combines photography, performance, and computer-drawn scenery into archival digital prints. Kato makes her own costumes, poses in broad gestures that borrow from Kyōgen theatrical comedy and contemporary Butoh dance (both highly stylized forms of Japanese performance), photographs herself as a range of characters—from everyday Japanese citizens to fantastical creatures in the forest—and embeds these images into large photomontages using landscapes she has digitally rendered. For further information visit (www.columbiamuseum.org).



Le Corbusier, "Le canape II (The Sofa II)", 1934-1956 © F.L.C. / ADAGP, Paris / Artists Rights Society (ARS), New York 2019

an exploration and presentation of more than 40 tapestries created by artists usually associated with painting, sculpture, and architecture, including Alexander Calder, Le Corbusier, Joan Miró, and Pablo Picasso among many others, on view in the Fourth-Floor Gallery, through Dec. 1. 2019. *Nomadic Murals* will highlight the museum's collection of tapestries from the mid-20th century, as well as shed light on a unique medium that has been important to many great Modern and contemporary artists. This will be the first time that the museum's entire tapestries collection will be on view. The tapestries will be hung alongside the artists' work in more familiar media to demonstrate both the stylistic consistency and the unique contributions textile production brought to their oeuvre. The title of the exhibition stems from Le Corbusier's essay "Tapestries: Nomadic Murals." For further information visit (<http://bechtler.org>).



Work by Jean Cauthen

Gallery C

continued from Page 33

intricate in design. My work is a melding of wildlife and contemporary art. I like the juxtaposition of the tightly rendered figure immersed in a sea of color and shapes suggestive of something timeless and vast. Hopefully I can bring the viewer to contemplate the boundlessness of nature, the beauty of each and every creature no matter how great or small, and give them the hope that beyond us there are worlds and worlds too numerous to count with wonders impossible to imagine."

For further information check our NC Commercial Gallery listings, call the gallery at 919/828-3165 or visit (www.galleryc.net).

You can contact us by calling 843/693-1306 or by e-mail at - info@carolinaarts.com but do it before Aug. 24th of the month.

Visit
Carolina Arts
on Facebook

Go to this [link](#) and
"like" us!

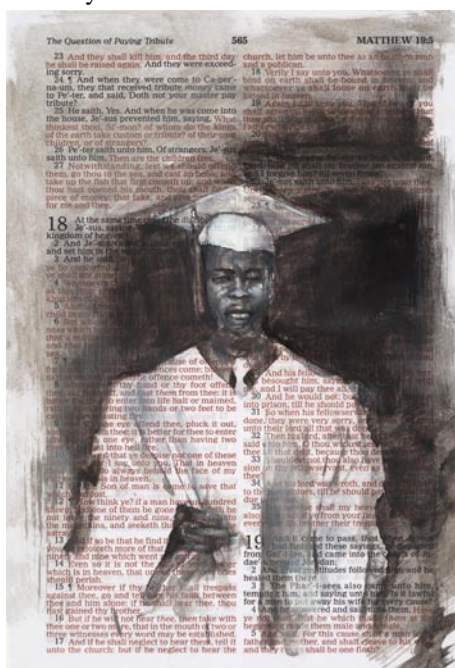


Charleston suffered widespread damage from the 1886 earthquake. Credit USGS.

Some Exhibits That Are Still On View

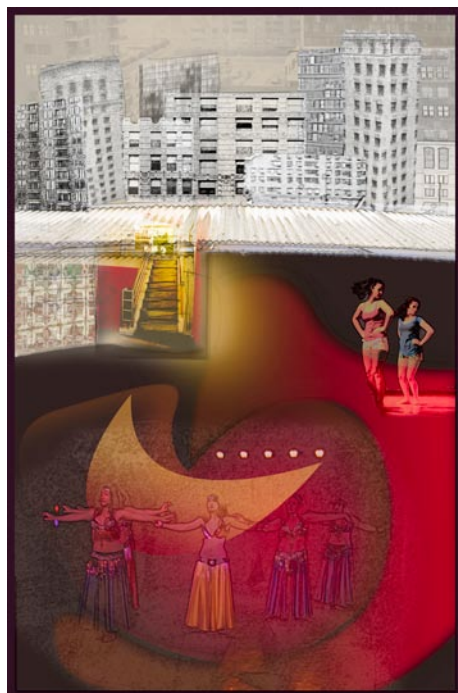
Our policy at *Carolina Arts* is to present a press release about an exhibit only once and then go on, but many major exhibits are on view for months. This is our effort to remind you of some of them.

(www.secca.org).



Work by Charles E. Williams

The Southeastern Center for Contemporary Art (SECCA) will present an exhibition of oil paintings by Charles Edward Williams. Entitled, *Warm Water: New Works by Charles Williams*, on view through Aug. 11, 2019. This exhibition features a collection of re-narrated visual works based on the event that sparked the Chicago Race Riot of 1919. These works unfold the story of five Black teens, and what reportedly caused the death of Eugene Williams in Lake Michigan on the South Side of Chicago. With noted recollections and reported events, the work in *Warm Water* documents and sheds light on the marginalizing oppositions the teens faced during the fragile height of racial sociopolitical conditions nation-wide. The Chicago riot, which took place on July 27, 1919, was the most violent riot in a volatile summer of race riots across the United States. For further information visit



Work by Mary Lounsbury

The Asheville Area Arts Council in Asheville, NC, is presenting *Deconstruct to a New Paradigm*, organized by Tekla Howachyn, and featuring works by six other artists including: Marty Cain, Mary Lounsbury, Karen Chapman, Kathleen Kondilas, Jay Pfeil and Jenny Kiehn, on view through Aug. 16, 2019. A reception will be held on Aug. 2, from 5-8pm, with an artist talk beginning at 6:30pm. Tekla Howachyn, a local metal artist, has responded to the deep divisions in our society by creating an exhibition with a positive message. Inspired by Rev. Martin Luther King's words, "I have decided to stick with love, hate is too great a burden to bear" she seeks to inspire others to imagine a future in which we transcend our society's current struggle over polarizing issues and come together in the middle ground. For further information call the Council at 828/258-0710 or visit (<http://ashevillearts.com>).

continued above on next column to the right

The Morris Center for Lowcountry Heritage in Ridgeland, SC, is presenting *The Great Charleston Earthquake of 1886 Exhibition*, on view through Nov. 2, 2019. This exhibit examines the most destructive earthquake ever recorded in the eastern United States. The quake occurred near Charleston, SC, on Aug. 31, 1886. The quake was felt by two out every three people living in the country! Estimated at a 7.3 magnitude (more powerful than the Haiti earthquake in 2010) the shock lasted about a minute. More than 100 people were killed and almost every building in Charleston was damaged. Charlestonians suffered the most psychologically given the 300 aftershocks taking place over the next 3 years. For further information call the Center at 843/284-9227 or visit (www.morrisheritagecenter.org).

The Bechtler Museum of Modern Art in Charlotte, NC, is presenting *Nomadic Murals: Tapestries of the Modern Era*,

Central Piedmont Community College in Charlotte, NC, is presenting an exhibit of painting by Jean Cauthen, on view at the Bill and Patty Gorelick Gallery, Central Piedmont's Harris Campus, through Dec. 13, 2019. Cauthen's work is distinctive for its vivid but complex color relationships and joie de vivre. Beneath the color lies references to past artists, eras and movements, adding layers of meaning to her illuminated colors. While her subject often derives from the past, the form – the sea of small, chaotic shapes to create a harmonious whole – reflects a more modern gestalt. Within that sea are complex relationships and contradictions in which she expresses order, beauty and joy. Beyond the message of order, Cauthen hopes the viewer responds on a visceral level to these combinations. For further information call Robin Glenn at 704/330-6869 or e-mail to (robin.glenn@cpcc.edu).

SC Institutional Galleries

Allendale

Salkehatchie Arts Center, 939 N. Main St., Allendale. **Ongoing** - Featuring a retail store offering works by artists from the Salkehatchie region including Allendale, Bamberg, Barnwell, Colleton, and Hampton Counties. Hours: Tue.-Sat., 10am-5pm. Contact: 803/584-6084.

Anderson

Anderson Arts Center, located in the Arts Warehouse, 110 Federal Street, downtown Anderson. **Through Aug. 29** - "Anderson Artists Guild Membership Exhibit". Hours: Tue.-Fri., 9:30am-5:30pm. Contact: 864/222-2787 or at (www.andersonartscenter.org).

Bay3 Artisan Gallery, located in the Arts Warehouse, 110 Federal St., Anderson. **Ongoing** - Featuring works by Marion Carroll, Carol Cook, Joshua Davis, Lynn Felts, Jane Friedman, Cheryl Gibisch, Ann Heard, Ruth Hopkins,

Diann Simms and Lori Solymosi. The work presented in the gallery features oils, acrylics, watercolors, photography, pastels, collage, assemblages, sculpture, mosaics, and stained glass and jewelry. There is a piece of original art for every home or office in a variety of price ranges. Co-sponsored by the Anderson Arts Center. Hours: Tue.-Fri., 10am-4pm, & Sat., 10am-1pm. Contact: 864/716-3838 or at (www.andersonartscenter.org).

Beaufort Area

Gallery @ ARTworks, home of the Arts Council of Beaufort, Port Royal, & Sea Islands, 2127 Boundary St., near K-Mart, in Beaufort Town Center, Beaufort. **Ongoing** - Featuring the work and creative processes of new and emerging artists. Hours: Mon.-Fri., 10am-5pm. Contact: 843-379-2787.

continued on Page 35