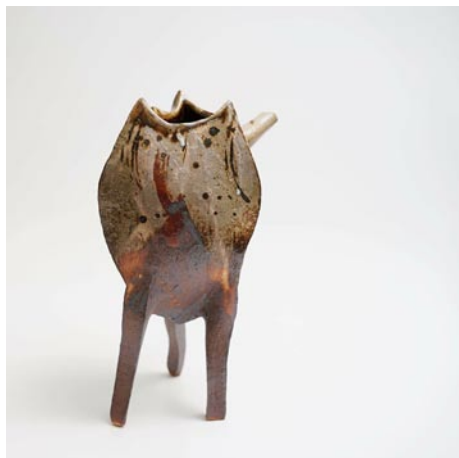


# NC Commercial Galleries

continued from Page 66

lain jewelry, and slip-trailed pottery by Laura Weant-Johnson. Also also custom tile installations. Hours: Tue.-Sat., 10am-5pm or by appt. Contact: 336/301-6681.

**Stuempfle Pottery**, 1224 Dover Church Rd., Seagrove. **Ongoing** - Featuring pottery with expressive shapes and natural surfaces by David Stuempfle. Hours: during kiln openings and by appt. Contact: 910/464-2689 or at ([www.stuempflepottery.com](http://www.stuempflepottery.com)).



Work by Takuro Shibata

**Studio Touya**, 4911 Busbee Road, Seagrove. **Ongoing** - Studio Touya is a handmade pottery studio located in Seagrove, where Hitomi and Takuro Shibata set up studio and built a Japanese style wood kiln. Our focus is to make simple and functional pottery by using local wild clay and wood firing technique. We named our pottery as "Touya" when we started our small pottery studio in Shigaraki, Japan, and it literary means "pottery house" in Japanese which we really like. Contact: (336)510-7385 or at ([www.studiotouya.com](http://www.studiotouya.com)).

**Sunset Pottery**, 123 Sunset Dr., Robbins. **Ongoing** - Featuring all lead free pottery by Harold B. & Gloria B. Stutts. Have traditional pottery, piggy banks, lamps, vases, and special order pieces. Hours: Mon.-Sat., 10am-5pm. Contact: 910/948-3009 or e-mail at ([gstutts@maniscustombuilders.com](mailto:gstutts@maniscustombuilders.com)).

**Teague's Frogtown Pottery**, 179 Frogtown Rd., Eagle Springs. **Ongoing** - Featuring traditional, hand-thrown pottery that is all lead-free by Jean Teague. We specialize in dinnerware, cookware, lamps, vases, and Christmas ornaments. Hours: Mon.-Sat., 9am-5pm. Contact: 910/948-3540.

**The Gingerbread House Pottery**, 246 Old Plank Rd., Seagrove. **Ongoing** - Featuring decorative and functional cone 6 electric fired pieces by Suzanne Bettis. Hours: Mon.-Sat., 10am-5pm (closed Jan. & Feb.). Contact: 336/873-7762 or e-mail at ([suzanbett9@yahoo.com](mailto:suzanbett9@yahoo.com)).

**The Triangle Studio**, 1140 NC-705, Seagrove. **Ongoing** - Located near downtown Seagrove, this studio and gallery space is a collaboration between ceramic artists Kate Waltman (formerly Kate Johnston) and Erin Younge, as well as guest ceramic artists Bill Jones, Andrew Dutcher, and Margaret Larson. Hours: Fri. & Sat., 10am to 4pm. Contact: 336/872-1027 or at (<https://thetrianglestudio.com/>).

**Thomas Pottery**, 1295 S. Hwy. 705, Seagrove. **Ongoing** - Featuring functional and decorative stoneware pottery by Scott and Bobbie Thomas. Hours: Tue.-Sat., 10am-5pm. Contact: 336/879-4145 or at ([www.thomaspottery.com](http://www.thomaspottery.com)).

**Tom Gray Pottery**, 1480 Fork Creek Mill Rd., Seagrove. **Ongoing** - Featuring wheel thrown and hand built utilitarian wares fired in a gas-fired car kiln to cone 10 utilizing local clay in slip decoration and glazes by Tom Gray. Glazes are primarily mattes. Shapes of serving pieces and dinner ware include square and oval as well as round. Hours: Mn.-Sat., 10am-5pm. Contact: 336/873-8270 or at ([www.n2clay.com](http://www.n2clay.com)).

**Triple C Pottery**, 3267 Big Oak Church Rd., Eagle Springs. **Ongoing** - Featuring hand-thrown functional and decorative pieces, with a variety of lead-free glazes. Hours: Mon.-Sat., 9am-5pm. Contact: 910/948-3635 or at ([www.triplecpottery.com](http://www.triplecpottery.com)).

**Turn and Burn Pottery**, 124 East Ave., Seagrove. **Ongoing** - Featuring traditional Seagrove salt-glazed and wood-fired stoneware. Contemporary Raku and horsehair by David and Deborah Garner. Hours: Mon.-Sat., 9am-5pm. Contact: 336/873-7381 or at ([www.turnandburnpottery.com](http://www.turnandburnpottery.com)).

**Uwharrie Crystalline Pottery**, 112 East Ave., Seagrove. **Ongoing** - Featuring crystalline pottery (the art of growing crystals on vases), raku, and functional stoneware by William & Pamela Kennedy. Hours: Mon.-Sat., 9am-5pm & Sun., noon-5pm. Contact: 336/873-7532 or e-mail at ([uwharriecrystalline@embarqmail.com](mailto:uwharriecrystalline@embarqmail.com)).

**Vernon Pottery**, 1066 Chriscoe Rd., Seagrove. **Ongoing** - Featuring a wide line of wares, from 10 oz. coffee mugs to 12 gal. planters. Their surface treatments include slip-trailing, carving, multiple glazes, and overglaze brushwork. Hours: Mon.-Sat., 10am-5pm. Contact: 336/879-2788.

**Village Pottery and Marketplace**, 205 E. Main St., Seagrove. **Ongoing** - Downtown Seagrove's oldest and largest gallery, featuring fine pottery and crafts by over 100 artisans including these potters: Gene Arnold (Mt. Airy, NC), Darlene Russell (Elderado, NC), Walter Aberson (Concord, NC), Joyce Branch (Waxhaw, NC), Joe Frank McKee (Dillsboro, NC), Tamera Martinez (Boonesboro, MD), Judy Freeman Foushee (Eagle Springs, NC), Fred Rust (Gastonia, NC), Houge Vernon (Seagrove, NC), Wyndham & Melanie Dennison (Seagrove, NC) and several others. Hours: Mon.-Sat., 10am-5pm & Sun., 1-5pm. Contact: 336/873-7966 or at ([www.seagrovevillagepottery.com](http://www.seagrovevillagepottery.com)).

**Walker Art Studios Sculpture & Fine Art**, Historic Lucks Cannery Complex, 365 Fernandez Loop, Suite 205, Seagrove. **Ongoing** - Walker Art Studios was formerly CB East and serves as our gallery and studio space. Located on the East side of Seagrove, it provides a space for artists to display their art for sale as well as providing studio space for our owners and visiting sculptors needing a place to touch up sculptures before the pieces begin the process of being cast into bronze at our foundry. Hours: by appt. Contact: 336/460-1411, 336/465-1121 or at ([walkerartstudios@gmail.com](mailto:walkerartstudios@gmail.com)).

**Walton's Pottery**, 1387 S. NC Hwy. 705, Seagrove. **Ongoing** - Innovative, contemporary pottery by Don and Susan Walton located inside Pottery Road Gallery. Hours: Tue.-Sat., 10am-5pm. Contact: 336/879-2600 or at ([www.potteryroad.com](http://www.potteryroad.com)).

**Westmoore Pottery**, 4622 Busbee Rd., Seagrove. **Ongoing** - Historical redware, salt-glazed stoneware, and green-glazed pottery, especially styles from central NC before 1850 by David and Mary Farrell. Hours: Mon.-Sat., 9am-5pm (closed Dec. 24- Jan. 17). Contact: 910/464-3700 or at ([www.westmoorepottery.com](http://www.westmoorepottery.com)).

**White Hill Gallery**, 407 Highway (15-501), Carthage. **Ongoing** - Featuring works of beautiful pottery, including Southwest, ceramic, hand-painted glassware, wood turning, and paintings in watercolor, oil and pencil. Hours: Tue.-Fri., 10am-6pm; Sat., 10am-5pm; & Sun., 1-5pm. Contact: 910/947-6100.



Works from Whynot Pottery

**Whynot Pottery**, 1013 Fork Creek Mill Rd., Seagrove. **Ongoing** - Featuring interesting shapes and intriguing glazes. Custom sizes on lamps, vases and bottles by Mark and Meredith Heywood. Hours: Mon.-Sat., 9am-5pm. Contact: 336/873-9276 or at ([whynotpottery.com](http://whynotpottery.com)).

**Williams Pottery**, 2170 Dan Road, Robbins. **Ongoing** - Functional pottery in multi-colored as well as decorative glazes. Hours: Tue.-Sat., 10am-4pm. Contact: 910/464-2120.

**Windsong Pottery**, 6109 Brantley Gordon Rd., Denton. **Ongoing** - Featuring handmade functional stoneware in glazes of floating blue and rainbow by Margie Nance, Matthew Nance, Lydia Nance and other family members. Hours: Mon.-Fri., 9am-5pm. Contact: 336/857-2485 or e-mail at ([windsongpottery@yahoo.com](mailto:windsongpottery@yahoo.com)).

**Wyndham & Brooke Haven Pottery Gallery**, 209 East Main St., Seagrove. **Ongoing** - Featuring fine functional high-fired stoneware with rich contemporary glazes by Wyndham and Melanie Dennison. Hours: Mon.-Sat., 9am-5pm & Sun., noon-5pm. Contact: 336/873-7254.

## Shelby

**Buffalo Creek Gallery**, 104 E. Warren Street, Shelby. **Ongoing** - The gallery features paintings, drawings, note cards, polymer clay art, pottery, woodturnings, woodcarvings, jewelry, stained glass, pressed flowers, quilting, weaving and much more! Hours: Mon.-Fri., 10am-5:30pm and Sat., 10am-4pm. Contact: 704/487-0256 or at ([www.buffalocreekgallery.com](http://www.buffalocreekgallery.com)).

## Siler City

**Against His Will Gallery and Studio**, 117 E. Second St., Siler City. **Ongoing** - Featuring handknitted rugs, quality yarn, stunning alpaca fiber in a variety of colors, handmade knitting needles, Fricke spinning wheels as well as very cool mobiles, hand poured environment-friendly candles, and more! Hours: Wed.-Fri., 1-5pm & Sat., 10am-5pm. Contact: 919/742-1122 or at ([www.AgainstHisWillStudio.com](http://www.AgainstHisWillStudio.com)).

**Chatham Camera Club Gallery**, 229 N. Chatham Ave., Siler City, NC. **Ongoing** - Featuring works by a diverse group of amateur and professional photographers networked together around the idea of sharing our knowledge and experience with each other, while enjoying our interest in photography. Hours: by chance and the 3rd Fri. from 6-9pm. Contact: ([www.chathamcameraclub.org](http://www.chathamcameraclub.org)).

**Hotel Hadley Studios**, 130 N. Chatham Ave., Siler City. **Ongoing** - Featuring works by Kristy Church, Sarah Kuhn and Drucilla Pettibone. We consist of 6 studios and an exhibition space. We will have monthly rotating shows in the gallery space. Hours: 3rd Fri. 6-9pm and by chance and appt. Contact: 919/663-0241 or at ([www.hotelhadleystudios.com](http://www.hotelhadleystudios.com)).

**Lakewood Pottery**, 11330 Hwy. 64 W., Siler City. **Ongoing** - Featuring crystalline, high-fired porcelain and gold lusters by Ed Weintraub. Hours: Tue.-Sat., 10am-4pm & Sun., noon-4pm. Contact: 919/663-3743.

**Person to Person Art Studio/Gallery**, 210 N. Chatham Ave., Siler City. **Ongoing** - Featuring unique art for interesting people, all created by artist Roger Person. Hours: by appt and on the 3rd Fri., 6-9pm. Contact: 919/663-0982 or e-mail at ([person@charter.net](mailto:person@charter.net)).

**Raleigh Street Gallery**, 120 W. Raleigh St., Siler City. **Ongoing** - Featuring a consortium of many artists from the area painters, sculptors, metal workers, jewelersmiths, basket weavers, soap makers, slate artist, wood workers, - whose works are all on display in a spacious and welcoming atmosphere. Hours: Wed.-Fri., 10am-6pm, by chance or appt. and on 3rd Fri., 6-9pm. Contact: 919/663-6278 or at ([www.raleighstreetgallery.com](http://www.raleighstreetgallery.com)).

## Sparta

**Blue Ridge Gallery of Fine Art**, 103 Gallery Lane, 15 minutes from downtown Sparta. **Ongoing** - Featuring a variety of artworks by local and regional artists. Hours: Thur.-Sat., 11am-6pm & Sun., 1-6pm, when open - call ahead. Contact: 336/372-1711 (<http://www.blueridgefineart.com>).

**Cater Pots Studio**, 209 Antioch Church Road, 4 miles from the town of Sparta. **Ongoing** - Husband-&-Wife team, Daniel & Robin Cater create beautiful stoneware pottery in their Blue Ridge mountain studio. Cater Pots are fired to cone 6 oxidation, so all functional pottery is food, dishwasher, microwave, and oven safe. Cater Pots mixes their own glazes and applies them to the bisqueware in attractive combinations by various means including dipping, brushing and spraying. Hours: Mostly Wed.-Sat., 10am-4pm - call ahead. Contact: 336/372-4604 or at (<http://www.caterpots.com>).

**Mangum Pottery of Turkey knob**, 280 Turkey Hollow Lane, Sparta. **Ongoing** - Featuring pottery and ceramic art by Robin Mangum in a wide variety of function and form. Hours: hours vary so call ahead. Contact: 336/372-5291 or (<http://www.mangumpottery.com>).

## Statesville

**Village Pot Shop Fine Arts and Crafts Gallery**, 248 N. Center St., 2 Blocks North of the Center of town on the right, Statesville. **Ongoing** - Our mission is to provide a showcase for local and regional artists and artisans, providing high-quality decorative and functional arts and crafts to patrons with an eye for the finer things. Our arts and crafts galleries feature handmade jewelry, blown glass, woodwork, regional

pottery, metalwork, mosaics, hand-woven fibers, paintings and more. So, whether you are interested in: vases, bowls, paper weights, fanciful ornaments, stained glass, sun-catchers, decorative boxes, exquisite bowls turned from found pieces of wood, each one of a kind, watercolors, baskets, ceramics, fine photography, prints, collages or oil paintings. We also offer classes and workshops by local and regional artists. Hours: Tue.-Fri., 10:30am-5pm & Sat., 10am-4pm. Contact: 704/380-4689.

## Sylva

**Karcher Stone Carving Studio & Gallery**, 260 North Beta Road, off US 74, Sylva. **Ongoing** - Featuring a working studio and gallery with stone carvings by Collene Karcher, executed in marble, alabaster, and limestone with steel and aluminum introduced at times. Hours: by appt only. Contact: 828/586-4813 or at ([www.collenekarcher.com](http://www.collenekarcher.com)).

## Tryon

**Carri Bass Photography and Art Studio**, 158 N. Trade Street, Tryon. **Ongoing** - Carri Bass Art studio is located in the heart of Tryon. It is in a wonderful old building with great lighting and a dedicated studio section, in addition to gallery space for monthly art exhibits. Hours: by appt. Contact: 864/598-9880 or st ([carribass.com](http://carribass.com)).

## Wadesboro

**Olde Mill Gallery & Studios**, Lockhart-Taylor Center, 514 N. Washington St., Wadesboro. **Ongoing** - At the gallery visitors will see artwork by regional artists which includes: original paintings in oil, acrylic & watercolor, that range from landscapes to abstracts; photography; works in copper and copper repousse; ceramic creations, custom sculptured and functional; art glass jewelry, jewelry made from beads of Swarovski crystal; hand-stitched quilts of exquisite designs; hand painted goblets, pitchers and vases; wood sculptures and turnings, and more. Hours: Mon.-Thur., 10am-5pm; Fri., 10am-3pm or by appt. Contact: 704/272-5464 or at ([www.oldemillgallery.org](http://www.oldemillgallery.org)).

## Waxhaw

**Stewart's Village Gallery**, 116 McDonald St., Waxhaw. **Ongoing** - Featuring pottery by Bill Stewart, as well as works by over 300 other artists including both decorative and functional handmade pieces. The gallery is filled with pottery, jewelry, wrought iron, garden accents, decorative whimsy and so much more. Hours: Mon.-Sat., 10am-5pm & Sun., 1-5pm. Contact: 704/843-5638 or at ([www.stewartsvillagegallery.com](http://www.stewartsvillagegallery.com)).

## Waynesville

**Balsam Ridge Gallery**, 44 North Main Street, Waynesville. **Ongoing** - Fine art gallery featuring paintings of Western NC mountain vistas and beyond. Hours: daily 11am-6pm, but call ahead. Contact: 828/234-1616.

**Cedar Hill Gallery**, 196 N. Main Street, Waynesville. **Ongoing** - Featuring the art of Gretchen Clasby and 83 incredible artisans. Hours: Mon.-Sat., 10:30am-5:30pm. Contact: 828/421-6688 or at (<https://www.cedarhillstudio.com/>).

**Jo Ridge Kelly Fine Art**, a gallery and teaching studio, 136 N. Main Street, Waynesville. **Ongoing** - Featuring the painting of Jo Ridge Kelly. Hours: Thur.-Sat., noon-6pm and Sun.-Wed., by chance or appt. Contact: 828/226-0549 or at ([www.JoKelley.com](http://www.JoKelley.com)).

**Moose Crossing's Burl Wood Gallery**, 101 N. Main Street, Waynesville. **Ongoing** - Featuring rustic Burl furniture with an elegant finish. Two generations of Metzgers, source, design and craft burl. We are fortunate to have talented craftsmen working with us. It is our pleasure to coordinate efforts as a team. The focus is on the end product as an art piece. Hours: Mon.-Sat., noon-5pm or by appt. Contact: 828/452-2550 or at (<https://burl-gallery.com/products/burl-wood-sculpture>).

**T. Pennington Art Gallery**, 15 N. Main Street, Waynesville. **Ongoing** - Featuring pencil drawings of local scenery, and landmarks by Teresa Pennington, including originals, prints and gift items. Also framing is available. Hours: Mon.-sat., 10am-5pm. Contact: 828/452.9284 or at ([www.tpennington.com](http://www.tpennington.com)).

**The Jeweler's Workbench**, 80 N. Main St., Waynesville. **Ongoing** - Specializing in fine hand-crafted jewelry, custom design and repair, limited edition watches and jewelry boxes. Featuring award-winning artists of the Great Smoky Mountains and from across the country. Hours: Mon.-Sat., 10am-5:30pm. Contact: 828/456-2260.

continued on Page 68