

Twelve." Charleston Quilter Dorothy Montgomery made "KABOH" in honor of the "Priscilla" story. The quilt was in the possession of Dr. Joseph Opala who donated it to the Avery Research Center in July, 2008. **Corridor (2nd Floor), Ongoing** - "Esau Jenkins: A Retrospective View of the Man and His Times" This exhibition was developed in 1991 by the Avery Institute. After its display in Charleston it traveled throughout the state of SC under the auspices of the State Museum Traveling Exhibition Program. Consisting of (15) panels measuring 24" x 36", the exhibit chronicles the myriad of activities Mr. Jenkins was intimately involved in. Additionally, it highlights his leadership skills as a conscious and compassionate community activist, organizer, entrepreneur and Civil Rights leader. Hours: Mon.-Fri., 10am-5pm & Sat., noon-5pm. Admission: by donation. Contact: 843/953-7609 or visit ([www.cofc.edu/avery](http://www.cofc.edu/avery)).

**Charleston Artist Guild Gallery**, 160 East Bay St., Charleston. **Sept. 1 - 30** - "Hidden Treasure," featuring an exhibit of non-objective paintings by Dian Hammett. A reception will be held on Sept. 7, from 5-8pm. **Ongoing** - Featuring an exhibit of works by over 73 plus members of CAG who display a wealth of talent in different media including, oils, acrylics, pastels, watercolors, photography, printmaking & sculpture. The Gallery is also home for the CAG office. Hours: Mon.-Sat., 11am-6pm. Contact: 843/722-2454 or at ([www.charlestonartistguild.com](http://www.charlestonartistguild.com)).

**City Gallery at Waterfront Park**, 34 Prioleau Street, Charleston. **Upper & Lower Level Galleries, Through Oct. 28** - "Mermaids and Merwoman in Black Folklore". Part of the 2012 MOJA Arts Festival. A reception will be held on Sept. 8, from 5-7pm. Curated by Torreeah "Cookie" Washington, this exhibit showcases fiber art pieces portraying mermaids and merwomen from artists across the United States. Hours: Tue.-Fri., 10am-6pm and Sat. & Sun., noon-5pm during exhibits. Contact: 843/958-6484 or (<http://citygalleryatwaterfrontpark.com/>).

**Gibbes Museum of Art**, 135 Meeting Street, Charleston. **Main Gallery, Through Sept. 9** - "Mary Whyte: Working South". Renowned watercolorist Mary Whyte captures the essence of vanishing blue-collar professions from across ten southern states in this traveling exhibition. The exhibition features 50 watercolor portraits, sketches, and drawings that focus on vanishing rural and industrial workforces that were once ubiquitous throughout the region but are now declining due to changes in our economy, environment, technology, and fashion. From the textile mill worker and tobacco farmer to the sponge diver and elevator operator, Whyte documents the range of southerners whose everyday labors have gone unheralded while keeping the South in business. **Sept. 21 - Dec. 30** - "Sound and Vision: Monumental Rock and Roll Photography". This exhibition features the iconic leaders of rock and roll, blues, and hip-hop—distinctly American forms of music with Southern roots—in images taken over the past five decades by the foremost photographers of contemporary musicians. **Ronda Gallery, Through Sept. 9** - "Places for the Spirit: Traditional African American Gardens of the South," features the work of fine art photographer Vaughn Sills and her stunning collection of photographs documenting African American folk gardens and their creators. Sills began photographing folk gardens in 1987 after visiting Mrs. Bea Robinson's garden in Athens, Georgia. Sills recalls that she "became entranced by Bea's garden" and felt a magic or spirit surrounding her. Over the next twenty years, Sills traveled throughout the Southeast and photographed over 150 yards and gardens—and often their creators. **Sept. 21 - Dec. 30** - "Willard Hirsch: Charleston's Sculptor". As Charleston's premier sculptor of the 20th century, this exhibition examines the body of work Willard Hirsch developed over the course of his fifty-year career. **First, Second and Third Floor Galleries, Ongoing** - "The Charleston Story". Drawn from the museum's permanent collection, this exhibition highlights significant people, places, and periods from Charleston's beginning as a British colony, through the American Revolution, the later ravages of the Civil War, and culminating today as a culturally diverse and dynamic community. **Ongoing** - "Hands On!" This exhibit features works of art selected from the Gibbes Museum of Art's touch collection. **Museum Shop** - Now offering the inventory of the Tradd Street Press, reproductions of works by Elizabeth O'Neill Verner among other exhibit related art objects. Hours: Tue.-Sat., 10am-5pm & Sun., 1-5pm; closed Mon. Admission: Yes. Contact: 843/722-2706 or at ([www.gibbesmuseum.org](http://www.gibbesmuseum.org)).

**Halsey Institute of Contemporary Art**, The Marion and Wayland H. Cato Jr. Center for the Arts, College of Charleston School of the Arts, 161 Calhoun St., Charleston. **Through Oct. 6** - "The Paternal Suit: Heirlooms from the F. Scott Hess Family Foundation," consists of over 100 paintings, prints, and objects assembled by Hess and presented as legitimate historical artifacts, supported by photographs, documents, and historical

ephemera. Each object and artwork bears an artist's name and detailed provenance and has been executed in the style of the century from which it supposedly originates. Sculpture, ceramics, furniture, toys, newspaper clippings, historic photographs, guns, and costumes advance the story. Hess does not claim authorship for the majority of works on display. Instead, he ascribes to them fictional artists, referring to himself as the Director of the "F. Scott Hess Family Foundation." Hours: Mon.-Sat., 11am-4pm. Contact: Mark Sloan at 843/953-4422 or at ([www.halsey.cofc.edu](http://www.halsey.cofc.edu)).

**Karpeles Manuscript Museum**, 68 Spring Street, corner of Spring & Coming Streets, Charleston, in the former St. James Methodist Church, founded in 1797. **Ongoing** - Featuring historically important documents from our permanent Charleston collection. Recently added to the Permanent Collection - a special and unique exhibit of Egyptian Stone Carvings dating from 1492 BC. Free parking and free admission. Hours: Tue.-Sat., 11am-4pm. Closed on holidays. Contact: 843/853-4651.

**Redux Contemporary Art Center**, featuring Redux Studios, 136 St. Philip Street, Charleston. **Through Sept. 20** - "FROM VOID TO VOID," featuring a solo exhibition by Sinisa Kukec. Kukec describes the exhibition as a "contemporary psychedelic melodrama". This story follows hopeless romantics, with misanthropic tendencies. They are semi-conscious beings infinitely fighting for love in a dream, while watching the universe from an inner-outer body experience. A reception will be held on Aug. 10, from 6-7pm and a gallery talk will be given from 6-6:30pm. Hours: Tue.-Thur., noon-8pm; Fri.-Sat., noon-5pm during exhibitions, or by appt. Contact: 843/722-0697 or at ([www.reduxstudios.org](http://www.reduxstudios.org)).



Work by DeWayne Sykes

**The Art Institute of Charleston Gallery**, 24 N. Market St., Charleston. **Sept. 27 - Oct. 30** - "The Art of Pyrography Defined by Heritage," featuring works by DeWayne Sykes and Curtis Stephens, as part of the 2012 MOJA Arts Festival. Hours: Mon.-Thur., 9am-7pm; Fri., 9am-5pm & Sat., 9am-3pm. Contact: 843/727-3500.

**The Charleston Museum**, 360 Meeting Street, Charleston. Founded in 1773, is America's first museum. **Historic Textiles Gallery, Through Dec. 9** - "Geometric Quilts". Pieced (or patchwork) quilts consist of geometric shapes sewn together to form a pattern. Popular throughout the 19th and 20th centuries, these quilts display a myriad of designs created from just a few distinct shapes. This exhibit looks at how these simple shapes are transformed into intricate and delightful patterns. **Ongoing** - Featuring the most extensive collection of South Carolina cultural and scientific collections in the nation, it also owns two National Historic Landmark houses, the Heyward-Washington House (1772) and the Joseph Manigault House (1803), as well as the Dill Sanctuary, a 580-acre wildlife preserve. Admission: Yes. Hours: Mon.-Sat., 9am-5pm & Sun., 1-5pm. Contact: 843/722-2996 or at ([www.charlestonmuseum.org](http://www.charlestonmuseum.org)).

ALTERNATE ART SPACES - Charleston **Ashley River Tower**, Public area at Medical University of South Carolina, Charleston. **Ongoing** - "Contemporary Carolina Collection @ Ashley River Tower," featuring the largest collection of original, contemporary South Carolina art on permanent display, including 885 works by 53 talented artists, sculptors and photographers in South Carolina. Artists included are: Lucille Akinjobe, Jack Alterman, Thomas Blagden, Jr., Carl Blair, Patti Brady, Keith Brown, Julia Cart, Eva Carter, Jocelyn Châteauvert, Lese Corrigan, Townsend Davidson, Linda Fantuzzo, Buddy Folk, Squire Fox, Mary Edna Fraser, Cassandra Gillens, Anthony Green, Jon Hollower, Ann Hubbard, Lisa Salosaari Jasinski, Erik Johnson, Kim Keats, Arianne King Comer, Kit Loney, Paul Mardikian, Nancy Marshall, Paul Matheny, John McWilliams, Sue Middleton, Marge Moody, Gordon Nicholson, Jane Nodine, Marcelo Novo, Karin Olah, Matt Overend, Rick Rhodes, Ed Rice, Molly B. Right, Susan Romaine, Kristi Ryba, Virginia Scotchie, Laura Spong, Tom Stanley, Christine Tedesco, Colleen Terrell, Leo Twigg, Tjelda Vander Meijden, Mary Walker, Sue Simons Wallace, Joe Walters, Sam Wang, Enid Williams, Manning Williams, and Paul Yanko. Hours: daily, 8:30am-5pm. Contact: Kathleen

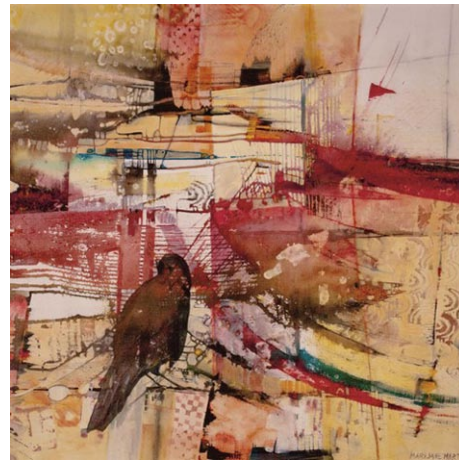
Ellis, Director of National Communications, MUSC, at 843/792.5602 or e-mail at ([ellisk@musc.edu](mailto:ellisk@musc.edu)).

**Charleston City Market**, Building B, Charleston. **Fri. & Sat., 7-10:30pm** - "Art in the Evening," presented by the Charleston City Market Preservation Trust LLC. A week-end art show featuring everything from folk art to fine art by local residents. To add to the charm, a concert of lovely classical guitar music and other featured musicians appear at the market. Building B of the Charleston city market. Admission is FREE. Contact: call 843/327-5976.

**Charleston County Public Library Lobby**, 68 Calhoun Street, Charleston. **Sept. 6 - Oct. 6** - "Images of South America: Sailing with Art," featuring an inter-American artistic dialogue exhibit. A reception will be held on Sept. 6, from 6-8pm. A chance meeting between South American writer, lawyer, and mariner Isabel Cristina Castillo-Mercer and an artist at the Charleston Artist Guild Gallery has resulted several months later in a special exhibit. The exhibit is intended to be a multicultural art dialogue to promote educational interaction and goodwill between the two continents of the Americas. Hours: Mon.-Thur., 9am-8pm; Fri. & Sat., 9am-6pm; and Sun., 2-5pm. Contact: 843/805-6803 or at ([www.ccpl.org](http://www.ccpl.org)).

**The Old Slave Mart Museum**, 6 Chalmers Street, Charleston. **Ongoing** - The Museum recounts the story of Charleston's role in this interstate slave trade by focusing on the history of this particular building and site and the slave sales that occurred here. Hours: Mon.-Sat., 9am-5pm. Contact: The Office of Cultural Affairs at 843/958-6467 or at (<http://www.charlestonarts.sc/>).

#### Cheraw



Work by Mary Jane Martin

**Burr Gallery**, Cheraw Community Center, 200 Powe Street, Cheraw. **Sept. 4 - 27** - "2011 South Carolina Watermedia Society Traveling Exhibit," featuring works by the top 30 award winners, South Carolina artists who are members of the society. Hours: Mon.-Fri., 8:30am-5pm. Contact: 843/537-8420, ext. 12 or e-mail at ([lbennett@cheraw.com](mailto:lbennett@cheraw.com)).

#### Chesnee

**Carolina Foothills Artisan Center**, 124 W. Cherokee Street, intersection of Hwy. 11 & Hwy. 221, Chesnee. **Ongoing** - Featuring original works by over 60 North & South Carolina artists, including pottery, decorative and functional; paintings in oil, watercolor, acrylic and mixed media; textiles and fiber art; carved wood; jewelry; dolls; brooms; monotypes; pewter sculpture; mosaics; glass, stained, torched and fused; photography; baskets; fine wood furniture; books and cards. **Also** - Offering educational programming for all ages, from art classes to cultural events. Hours: Mon.-Sat., 10am-5:30pm. Contact: 864/461-3050 or at ([www.cfac.us](http://www.cfac.us)).

#### Clemson Area

**The ARTS Center**, 212 Butler St., Clemson. **Through Sept. 30** - Featuring fabric quilts represented by the quilt blocks (squares) found on the Upstate Heritage Quilt Trail in Pickens County. For info contact: Upstate Heritage Quilt Trail by e-mail at ([info@uhqt.org](mailto:info@uhqt.org)), call 864/723-6603 or the Lake and Mountain Quilt Guild at ([www.LMQG.org](http://www.LMQG.org)). **Ongoing** - Featuring works by local and regional artists. Hours: Mon.-Thur., 10am-5pm & Fri., 10am-2pm. Contact: 864/633-5051 or at ([www.explorearts.org](http://www.explorearts.org)).

ALTERNATE ART SPACES - Clemson **Madren Conference Center**, Clemson University, Clemson. **Ongoing** - Featuring wood and steel bird carvings by Grainger McKoy. Hours: regular building hours. Contact: Peter Kent at 864/656-0382 or e-mail at ([peter.kent@clemsonews.clemson.edu](mailto:peter.kent@clemsonews.clemson.edu)).

**The Fran Hanson Discovery Center**, South Carolina Botanical Garden, Clemson University, Clemson. **Featured Artists Gallery, Ongoing** - Featuring works by Nancy Basket, Sue Figliola, Sue Grier, Sandy King, Jo Ann Taylor and Phil Garrett, on a rotating basis. **Elizabeth**

**Belser Fuller Gallery, Ongoing** - This collection of watercolors, mixed media and pen & ink drawings was generously donated by a dear friend of the SC Botanical Garden, Elizabeth Belser Fuller. This incredible collection ranges from 1947 to 1992. New pieces have been added this year in celebration of Belser's 97th birthday. Hours: Mon.-Sat., 10am-4pm. Closed University Holidays and Home Football Game Saturdays. Contact: 864/656-3405 or at ([www.clemson.edu/scbg/](http://www.clemson.edu/scbg/)).

#### Columbia Area

**Columbia Museum of Art**, Main & Hampton Streets, Columbia. **Lipscomb Family Galleries, Sept. 14 - Jan. 6, 2013** - "Mark Rothko: The Decisive Decade 1940-1950". Featuring 37 works including paintings, watercolors and works on paper drawn, this exhibition is largely from the collection of the National Gallery of Art in Washington, DC. This is the first significant exhibition of Mark Rothko's work to be on display in South Carolina. The exhibition brings to Columbia and South Carolina the art of a modern American master, providing a special opportunity for everyone in the region. Visitors are absorbed by Rothko's powerful and mystical style of painting. In addition, the accompanying catalogue explores a period of Rothko's development the 1940s that has received little attention and yet had a profound effect on his late career and brings new scholarship to art history. "This is not an exhibition that needs to justify its existence," the artist's son, Christopher Rothko, said. "On the contrary, the only thing that needs to be explained is its tardiness, because within the realm of Rothko's oeuvre, the works in this exhibition are the key to everything. Everything." The exhibition is presented through the generosity of First Citizens Bank. **Mamie and Andrew Treadway, Jr. Gallery, Through Sept. 16** - "Born from Fire: American Studio Glass from the Collection," featuring more than 30 examples of glass made by leaders in the movement. In celebration of the 50th anniversary of the founding of the American Studio Glass Movement, the Columbia Museum of Art showcases this special exhibition. **Gallery 15, Sept. 28 - Dec. 16** - "Face Jugs: African-American Art and Ritual in 19th-Century South Carolina". Featuring a stunning selection of unique SC stoneware vessels, this exhibition marks the first time in almost 30 years that a major American art museum brings together a definitive collection of African-American face jugs, borrowed from leading institutions and private collectors. This exhibition further illustrates the depth and breadth of African-American contributions to the rich artistic legacy of our state. "Face jug" is a term coined by decorative arts historians to refer to an African-American pottery type created in the South (most notably in present-day Aiken County, SC) between 1850 and 1880. The small, alkaline-glazed stoneware vessels possess facial features—usually wide-eyes and bared teeth—fashioned of kaolin, a locally sourced clay. The face jugs were functional objects that covertly represented the angst and difficulties associated with being an enslaved individual on a Southern plantation environment. These 23 vessels celebrate the aesthetic power of this potent art form and suggest new ways to consider their uses and, perhaps more importantly, their cultural meanings within a community of Americans who lived within challenging circumstances. The exhibition is presented in partnership with the University of South Carolina's McKissick Museum and generously supported by Charlton Hall Galleries and Susan Thorpe and John Baynes. **Wachovia Education Gallery, Sept. 11 - Jan. 6, 2013** - "Alchemy of Art". University of South Carolina students studied the science behind the art with Assistant Professor David Voros to create historically inspired artworks that concentrated on age old traditions. They made their own paints, gesso, and glue to create their works of art. Through this new program, "Alchemy of Art," children (ages of 8 - 12) also learned the same processes and techniques that were taught in Voros' class to create their own paint studies, frescos, encaustics, and paintings during a weeklong summer camp. **BB&T Focus Gallery, Ongoing** - "Southern Traditions," will showcase the richness and diversity of the Museum's collection of furniture, ceramics, silver, basketry, sculpture and paintings by artists native to, or active in, South Carolina and its surrounding states. Among the works on view will be fine silver made by Charleston and Columbia silversmiths; a sweet grass basket by Mary Jackson (SC, born 1945); wood carvings by Edgar Alexander McKillop (NC, 1879-1950); and paintings by Charles Fraser (SC, 1782-1860), Xanthus Russell Smith (SC, 1839-1929), William Harrison Scarborough (SC, 1812-1871), William Aiken Walker (SC, 1838-1921), among others. **Ray Taylor Fair Gallery, Ongoing** - Featuring a new and permanent installation of its ancient art collection. The installation includes approximately 50 objects that introduce the major ancient civilizations from the Mediterranean and Near East. Examples of the earliest form of writing from 12th century B.C. Mesopotamia, are shown next to Egyptian scarabs and Greek painted vessels. The world of the ancient Romans is

*continued on Page 70*