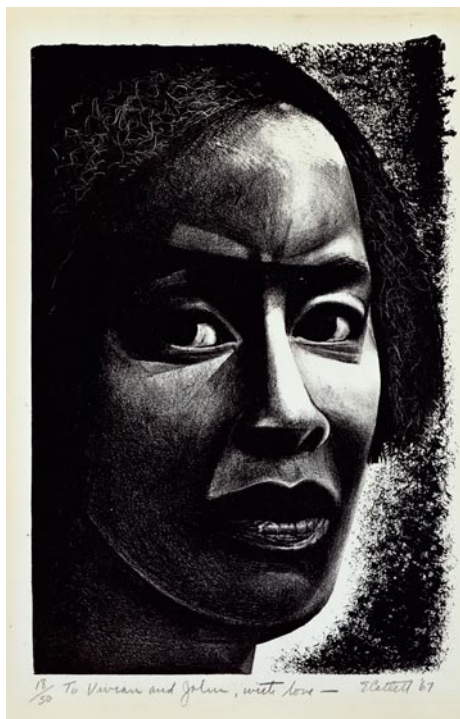


Some Exhibits That Are Still On View

continued from Page 40

brookgreen.org).

The Harvey B. Gantt Center for African American Arts + Culture in Charlotte, NC, is presenting three new exhibits including: *AfriCOBRA Now: An Aesthetic Reflection*, *Charlotte Collects Elizabeth Catlett: A Centennial Celebration* and *Intergalactic Soul*, all on view through Dec. 31, 2015. Activism - exercised through art and culture - is the yearlong programming theme of the Harvey B. Gantt Center. Fittingly, these three exhibits illustrate the long lasting legacies that use the visual arts as a tool for activism and social change. *Charlotte Collects Elizabeth Catlett: A Centennial Celebration* is a centennial commemoration of Elizabeth Catlett's life and work. The exhibition will include examples of her two-dimensional and three-dimensional works, as well as photographs of Catlett. The narrative will also highlight the show coming from, and reflecting, Charlotteans' appreciation and collection of her work. The history of Elizabeth Catlett expands to more than 70 years of sculptures and print. Catlett celebrated the strength and courage of African American women and Mexican working-class women through her work. For further information check our NC Institutional Gallery listings, or visit (www.ganttcenter.org).



"Head of a Woman" by Elizabeth Catlett (1915-2012). Lithograph (1967). The John & Vivian Hewitt Collection, Permanent Collection of the Harvey B. Gantt Center for African-American Arts + Culture. Generously donated by Bank of America Corporation

Clemson University in Clemson, SC, Features Works by Holly Hanesian

Clemson University in Clemson, SC, is presenting *Touch in Real Time*, an exhibition of ceramic work by artist and educator, Holly Hanesian, on view through Sept. 24, 2015, in the Lee Gallery, at the Center for Visual Arts. An Artist Talk will be given on Sept. 21, at 6pm, in Room 100 Lee Hall, a reception will follow at 7:30pm.

Touch is an intimate and universal experience. It instantly communicates in a simple and direct method while transcending the barriers of language. *Touch in Real Time* explores the power of touch at the crossroads of art, emotion and neuroscience. This exhibit interweaves the popular educational movement, STEAM (Science, Technology, Engineering and Math) by revealing how the science and arts are connected to each other.

Hanesian starts from the repetitive act of pressing wet clay between the hands of two individuals and explores the intimate, physiological and transformative experience of a handshake.

"My artwork responds to cultural shifts examining genetic markers and traits, the daily consumption of pharmaceuticals and adaptive behaviors on our DNA," Hanesian said.

Working alongside Greg Siegle, Ph.D and his lab of behavioral neuroscientists at the University of Pittsburgh, Pittsburgh, PA. Hanesian collected and examined data retrieved from brain scans using EEG and MRI. The goal of the research project was to measure the level of the bonding hormone, Oxytocin while participants were engaged in a 15 - 20 second handshake, the time it takes oxytocin to be released in the body. The exhibition showcases over 1,500 fired porcelain handshakes, a participatory station, graphs and research data from the



"Fate," by Holly Hanesian

project in an exhibition that examines a common, but often overlooked experience handshakes.

Hanesian takes this common gesture and drills down to the elemental experience of the act. *Touch in Real Time* provides a fresh perspective and a re-affirmation on the importance of touch. The exhibition reminds viewers about the physical transformation our bodies undergo when we insert touch back into our daily experience.

Hanesian received her MFA from the University of Georgia in Athens, GA, and is currently is a professor of art and the area head of the ceramics program at Florida State University in Tallahassee, FL. A child of two Armenian parents, she creates work that explores the crossroads of our DNA and the environment which is influenced by our daily experiences.

The workshop, reception and exhibit are free and open to the public because of donations from supporters and our Friends of the Center for Visual Arts.

For further information check our SC Institutional Gallery listings or contact Denise Woodward-Detrich by e-mail at (woodwaw@clemson.edu).

Clemson University in Clemson, SC, Offers Works by Hilary Siber

Clemson University in Clemson, SC, will present *Shifting Ground*, featuring paintings by Clemson alumna Hilary Siber, on view in the Lobby of the Brooks Center for the Performing Arts, from Sept. 8 through Dec. 4, 2015.

The seeds of Siber's love for art and landscape were planted early. As a child in Ohio, Siber remembers drawing trees and solving jigsaw puzzles. Flash-forward several years, and she found herself exercising those same artistic muscles pursuing a degree in architectural design at the Maryland Institute College of Art.

"I was fortunate enough to work in



"Smoke and Mirrors," by Hilary Siber

the design field for several years after graduation," Siber said, "but visual problem solving soon became a puzzle that pulled me toward creating fine art. I am forever challenged by the visual mode of communication. It seems to elude language while simultaneously creating a new one." She

continued on Page 42



Double Visions:



Quilts

Upstate
Heritage
Quilt Trail



Photographs

Jane Dorn
JoCarol Mitchell

Anderson Arts Center Opening

September 11th

Show Dates

September 11th - October 30th



ANDERSON
ARTS
CENTER

110 Federal Street
Anderson, South Carolina
864.222.2787



Upstate Heritage
Quilt Trail
Anderson, Oconee &
Pickens Counties, SC
UHQT.org

Sponsored by Oconee and Anderson Counties ATAX Commissions