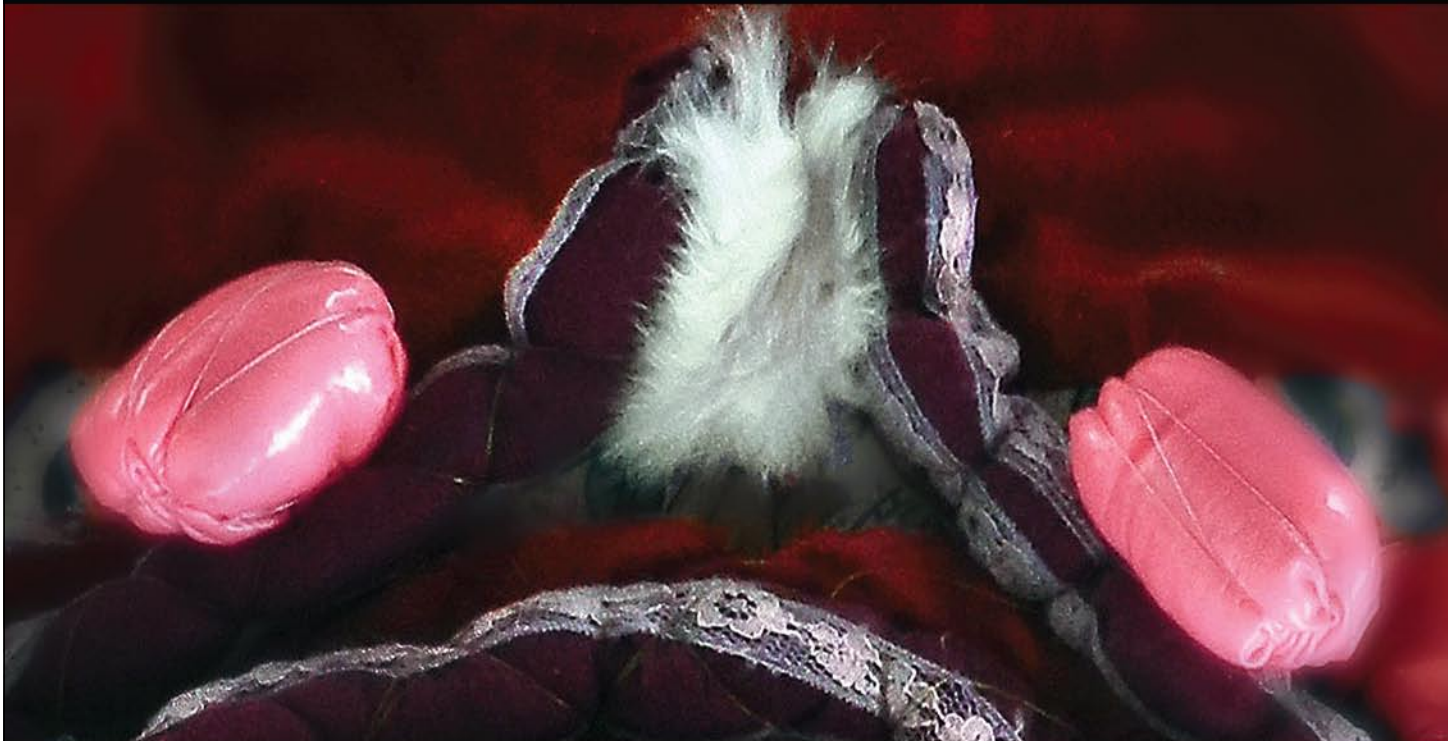


UPSTATE

Gallery on Main



LEAH MULLIGAN CABINUM emerge

September 6 - November 3, 2018
Artist's Reception: September 20, 5-8 p.m.

Upstate Gallery on Main is dedicated to contemporary original works of art and exhibitions sponsored by the University of South Carolina Upstate. One of three galleries at USC Upstate, the Upstate Gallery on Main joins the Curtis R. Harley Gallery and FOCUS Art Education Gallery to support the mission of offering exhibitions and activities that cultivate an understanding of art as a discipline, the relationship of art to life, and the historical and societal role art plays for the educated individual.

172 E. Main St, Spartanburg, SC 29306.

172 E. Main Street,
Spartanburg, SC 29306

Gallery hours:
Tuesday through Saturday
from 12 - 5 p.m.

f UpstateGalleryArt @uscupstategalleryart

uscugalleryart

Contact:
Jane Nodine
Gallery Director
(864) 503-5838
jnodine@uscupstate.edu

Mark Flowers
Gallery Coordinator
(864) 503-5848
mflowers@uscupstate.edu

UPSTATE
University of South Carolina Upstate

Wofford College

continued from Page 16

ment collection as well as special exhibits and the work of guest artists. The space is located on two separate floors, but it is connected visually and physically with a large opening in the floor, which enhances

both spaces.

For further information check our SC Institutional Gallery listings, call Laura Corbin at 864/597-4180 or visit (www.wofford.edu).

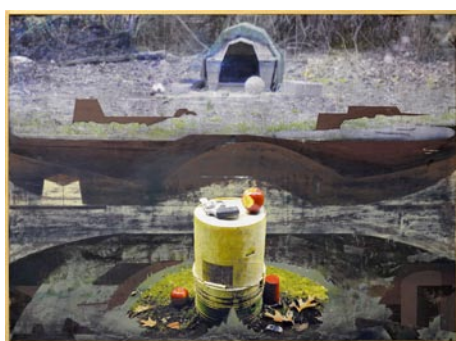
Converse College in Spartanburg, SC, Features Works by Andrew Blanchard

Converse College in Spartanburg, SC, will present works by Louisiana native Andrew Blanchard will exhibit new work which explores social commentary of America, on view in the Milliken Art Gallery, from Sept. 6 - 27, 2018. A reception will be held on Sept. 6, beginning at 6pm with a gallery talk at 6:30pm.

As the Director of Studio Art and Associate Professor of Printmaking and Photography at Converse College, Blanchard spent the Spring of 2018 on sabbatical to explore socially induced issues and its effect on his art. The works featured in *It's Like This, Though* will showcase Blanchard's mixed-process prints mounted on wood panel while his imagery will deliver a contemporary social commentary of America.

"Race, politics, religion, landownership/management, and socio-economic concepts have factored into my artwork for over a dozen years now. Ambivalence has always allowed for a balanced playing field for my thoughts, emotions, hopes, prayers, dreams and harsh realities," states Blanchard.

Blanchard is a proud graduate of Ole Miss's MFA program and his work was recently added to the permanent collections of the Ogden Museum of Southern Art in New Orleans and the Mississippi Museum of Art in Jackson, and it is featured or forthcoming in publications including *Ecotone*, *Electric Dirt*, *Printmakers Today*, *New American Paintings*, the *International Painting Annual* (nos. 4 and 7), and the *Oxford American*, which in 2012 named him among the



Work by Andrew Blanchard

New Superstars of Southern Art.

Founded in 1889 and located in the heart of Spartanburg, SC - home to six colleges and 13,000 college students - Converse College helps women develop the skills necessary to balance a full life. Students develop their unique voices through our challenging liberal arts curriculum, century-old honor tradition, and Daniels Center for Leadership and Service. Our close-knit residential community cultivates a spirit of sisterhood and enterprise among women diverse in backgrounds and interests. Across the board - from art and design to science, business, music and education - professors actively mentor and challenge students through spirited discussions inside and outside of the classroom. The Nisbet Honors Program, Petrie School of Music, independent and collaborative research opportunities, leading national debate teams, study abroad and internship programs, and a 10:1 student/fac-

continued above on next column to the right

ulty ratio differentiate the Converse learning community.

Converse competes in NCAA Division II athletics—the highest level of any women's college, is the only women's college on the All-Steinway School roster, and is consistently top ranked by *US News & World*

The Johnson Collection in Spartanburg, SC, Offers Sporting Exhibition

The Johnson Collection in Spartanburg, SC, will present *The Art and Soul of the Hunt*, on view in The Johnson Collection Gallery, from Sept. 4 through Nov. 2, 2018.

As the South sought to recover - emotionally, economically, and environmentally - in the decades following the Civil War, early conservationists of both the intentional and accidental variety began rehabilitating the region's scarred landscape. Along the South Carolina coast, most of the rich, loamy soil that had once produced ninety-five percent of the nation's rice had fallen fallow.

These tidal properties - intersected by miles of drainage canals and scores of dikes - became attractive investments for wealthy Northern financiers and industrialists who viewed the purchase of declining plantations as the perfect convergence of profit and pastime, and transformed the farms into hunting retreats.

In 1898, a dozen separate such properties were combined to form the Santee Club, a 23,000-acre expanse described in 1907 by a *New York Times* reporter as "probably the finest shooting preserves on the Atlantic Coast." Over time, a collective commitment to preservation outweighed members' personal pleasures, and in 1974 the Santee Club deeded its property to The Nature Conservancy, a gift considered to be "one of the single most valuable private donations to conservation in the history of the United States" to date.

This exhibition features a large selection of work by noted wildfowl artist Richard Bishop, who was a frequent and popular

Report.

For further information check our SC Institutional Gallery listings, contact Kathryn Boucher, Milliken Art Gallery Director for Converse College, by e-mail at (kathryn.boucher@converse.edu).



Work by Richard Bishop

guest at the Santee Club. An engineer by training, Bishop married his artistic expression to his lifelong passion for hunting. Game birds were Bishop's subject of choice, and he faithfully recorded their motions and migrations in various habitats up and down the Eastern Seaboard - on land and water, and on the wing. Paintings by John Tracy, Aiden Lassell Ripley, Eugene Thomason, Edmund Ashe, Alice Ravenel Huger Smith, Thomas Addison Richards, and Anna Heyward Taylor complement the Santee story.

Join us for a special ArtWalk presentation by Virginia Christian Beach, author of *Rice*

continued on Page 18