

# Pink Dog Gallery in Asheville

continued from Page 27 / [back to Page 27](#)

Cotton's recent exhibits and commissions include: *Going To Market* (Mural Artist / Designer, Partner - UNCA STEAM Studio) (2019); *Soul Singin'* (Literary Artist) Public Art Installation with Poetry Pathways and UNCA STEAM Studio in Asheville's River Arts District (2019); *Asheville Through Brown Eyes* (group show) Asheville Area Arts Council (2019); *Winged Narratives: A Social Study* (solo show) Asheville Area Arts Council (2019); *Blue Spiral 1- Into The Blue Artist Invitational* (featured artist) (2018), *The Junction - Intersections* (group show) (2017); *Pink Dog Creative Container Project Mural* (solo artist) (2016).

For further information check our NC Commercial Gallery listings or visit ([www.pinkdog-creative.com](http://www.pinkdog-creative.com)).



Work by Cleaster Cotton

## 2019 Open Studio Tour of Henderson County Takes Place - Sept. 21-22, 2019

The 2019 Open Studio Tour of Henderson County, NC, will be held on the weekend of Sept. 21-22, 2019, from 10am to 5pm daily. This free self-guided tour is a celebration of local art when once a year artists across Henderson County open their doors and invite the public behind the scenes to experience their creative process. Meet the artists and see their latest work; find special buys; view demonstrations of their craft. Original works in painting, sculpture, pottery, jewelry, fiber arts, metal arts, woodworking and glass will be offered by over 60 artists in 40 studios in the towns of Flat Rock, Tuxedo, Hendersonville, Horse Shoe, Mills River, and Laurel Park. The Art League of Henderson County is the Premier Tour

sponsor.

The popular Preview Party will be held on Thursday, Sept. 19, 2019, from 4-7pm at the Center for Art and Inspiration, 125 S. Main Street in Hendersonville, across from the Visitor's Center.

Open Studio Tour booklet/maps will be available starting in August at Henderson County Travel and Tourism, the Center for Art and Inspiration and many locations throughout Henderson County including local galleries.

For further information and printable maps are available online at ([www.hcost.org](http://www.hcost.org)) and on Facebook at (<https://www.facebook.com/#!/OpenStudioTourofHendersonCounty>).

## Penland School of Craft in Penland, NC, Features Works by Hoss Haley

The Penland School of Craft in Penland, NC, is presenting *Correction Line*, featuring works by NC sculptor Hoss Haley, on view at the Penland Gallery, through Sept. 15, 2019.

When visitors walk into the new exhibition at the Penland Gallery, they may feel a bit overshadowed. The six large steel sculptures by Hoss Haley are almost out of scale with the room, and their complex forms seem precariously balanced - as though they might tumble, roll, or shift at any moment.

The exhibition's title refers to a land-surveyor's technique that Haley was familiar with from his childhood on a Kansas farm. Beginning in the late 18th century, Midwestern land was divided into 640-acre squares that did not take into account the curvature of the earth. The solution was to periodically shift the placement of the squares, introducing what was called a "correction line." Haley remembers this as a feeling that the orderly geometry of his family's fields did not quite reflect the shape of the earth.

"I had a sense as a child that I was on an orb even though everything around me was flat," Haley says. The forms in this show are characterized by planes and straight corners that resolve into sections of spheres, possibly evoking the geometric and geographic tension that was addressed by the correction lines.

Haley's farm roots also connect directly to his choice of material. Steel is ubiquitous on a farm, and farm steel is constantly rusting and being repaired. Early in life, Haley developed a facility for working with the material, and he has retained a lifelong love for the aesthetic of rust. This aesthetic and a remarkable level of skill are both evident in the pieces in this show, all of which Haley and his assistant fabricated in his Mitchell County studio.

Although these pieces are large for a gallery exhibition, they are not the largest that Haley has executed during his more than 20 years working in North Carolina.



Works by Hoss Haley

He designed and built the beautiful fountain in Asheville's Pack Square, and he has created large public works for Mecklenburg County, the Charlotte Area Transit System, and the Charlotte Douglas Airport. His work is also in the collections of the Asheville Art Museum, the Mint Museum, and North Carolina State University. He has had a long relationship with Penland School of Craft as a resident artist and instructor.

Also, currently on view at the Penland Gallery is a show of contemporary jewelry made from a variety of materials. Around the building are outdoor sculptures by ceramic artist Catherine White and steel sculptor Daniel T. Beck and an interactive mixed media installation by Jeff Goodman.

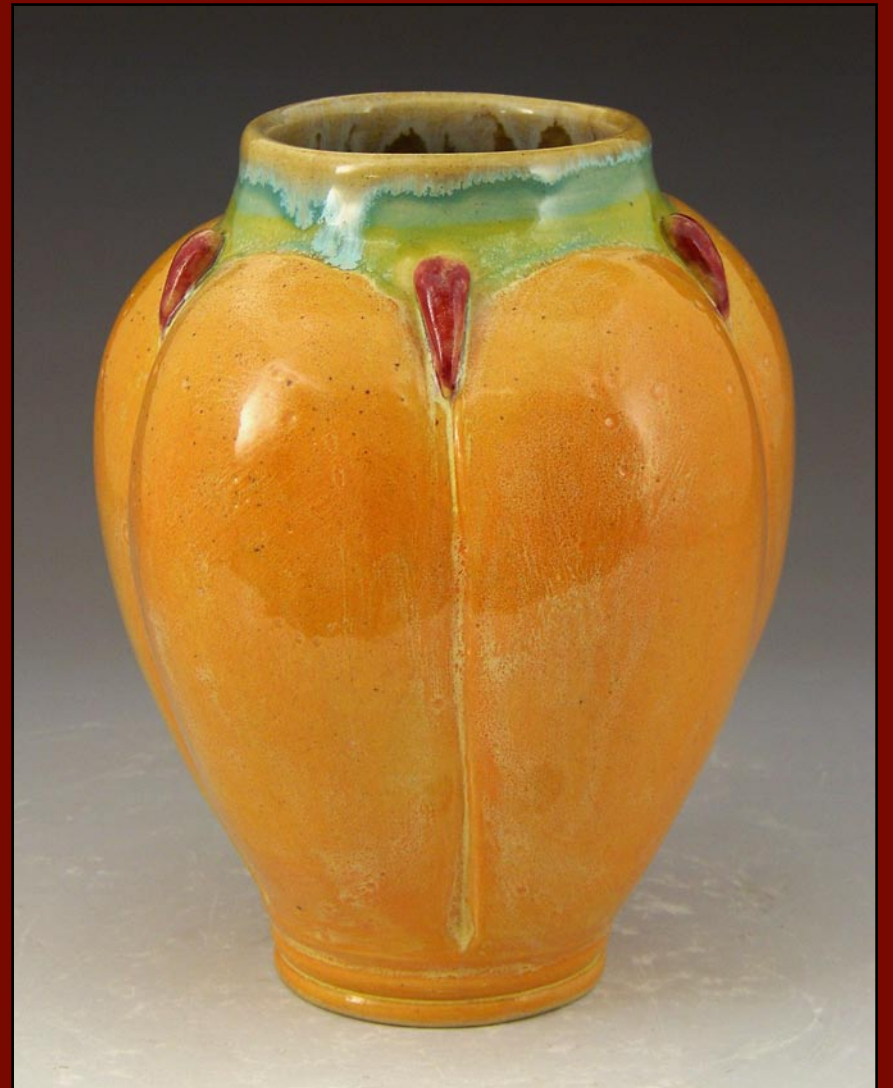
The Penland Gallery and Visitors Center is located at Penland School of Craft on Conley Ridge Road, just off Penland Road in Mitchell County (near the town of Spruce Pine). It is the first building on the right as you enter the Penland campus.

Penland School of Craft is an international center for craft education dedicated to helping people live creative lives. Located in Western North Carolina, Penland offers workshops in books and paper, clay, drawing and painting, glass, iron, metals, printmaking and letterpress, photography, textiles, and wood. The school also sponsors artists' residencies, an outreach program,

continued on Page 30

## Turtle Island Pottery

Handmade pottery by Maggie & Freeman Jones



[www.turtleislandpottery.com](http://www.turtleislandpottery.com)

Call 828-337-0992 to view our showroom any day.

Map to showroom @ 2782 Bat Cave Road + Old Fort, NC 28762

**RE/ASSEMBLED**  
Artists Transforming Materials

**LISA DE GIROLAMO  
& GRANT PENNY**  
Papering Surfaces

**DRAG**  
Prints by Hague Williams



JANET ORSELLI



GRANT PENNY

**CURRENT SHOWS  
THROUGH  
SEPTEMBER 27, 2019**

**upstairs**  
[artspace]

49 S Trade Street  
Tryon, NC 28782  
828.859.2828

[upstairsartspace.org](http://upstairsartspace.org)

Hours:  
Tuesday-Saturday,  
11am - 5pm



DJ GASKIN