

NC Institutional Galleries

continued from Page 53

crafted necklaces, earrings, bracelets and other ornaments from metals, stones, beads and fused glass. Our glass artist creates stained glass hangings, custom stained glass windows and fused glass art. You can also find unusual hand-made books and hand-painted porcelain both antique and new. Hours: Wed.&Thur., 11am-3pm and Fri.&Sat., 11am-5:30pm. Contact: 919/462-2035 or at (www.carygalleryofartists.org).

Herbert Young Community Center, 101 Wilkinson Avenue, Cary. **Through Sept. 15** - "Joe Lipka: Harmony Exhibition". Lipka says, "It started as a walk in a Japanese Garden on an autumn afternoon. But it became an opportunity to look at both the natural and the man made together. It ended with me wondering if the natural was growing around the man made, or was it the opposite? More shows will be added soon." Hours: Mon.-Fri., 9am-10pm; and Sat., 9am-6pm. Contact: 919/4604965 or (www.townofcary.org).

Page-Walker Arts & History Center, 119 Ambassador Loop, Cary. **Through Sept. 23** - Studio Art Quilt Associates present: "Let the Sun Shine In!", featuring a juried exhibition of 32 contemporary art quilts from the Virginia and North Carolina Region of Studio Art Quilt Associates (SAQA). "Let the Sun Shine In!" is a compilation of emotions surrounding the recovery many of us have felt during the global Covid19 crisis and resulting shutdown, now reopening in so many localities. Considering the difficulties so many of us have experienced, I'm drawn to the wisdom my mother often imparted: "In the darkest of times, the sun will still rise in the morning." She taught us that there is always hope. This exhibition is the result of my wish to embody her wisdom so that many could benefit from it. "Let the Sun Shine In!" has led that call. Many of the participating artists used this exhibition to channel their own emotions as the seclusion they experienced was left behind. Others celebrated, as we all did, with the freedom gained when shutdowns were lifted. It is our hope that you, the viewer will identify artwork as it relates to your own experience; that you may find some solace from the art quilts displayed here and share in sentiments of each of the artists represented in this exhibition. **Through Sept. 23** - "Michael Salemi: Color & Texture in Wood". Salemi presents turned wooden vessels that highlight texture and color including pieces that combine wood, laminates, and epoxy resin to introduce color in dramatic ways. Hours: Mon.-Thur., 10am-9:30pm; Fri., 10am-5pm; & Sat., 10am-1pm. (It is strongly advised that you call ahead about hours this space will be open.) Contact: 919/460-4963.

Town Hall Gallery, City of Cary Town Hall, 316 North Academy Street, Cary. **Through Sept. 15** - "Joe Lipka: After the Memories Exhibition". I've photographed Academy Street in Cary, NC, for over thirty years. After some major renovations on the street, I went back to seek what has changed. Quite a lot, I think, and not much has changed for the better. Hours: Mon.-Fri., 8am-5pm. Contact: 919/469-4061.

Chapel Hill - Carrboro



Jean-François-Pierre Peyron, French, 1744-1814, "Académie: Seated Male Nude", 1780, black chalk on off-white laid paper, 14 3/8 x 20 7/8 in., (36 x 53 cm). The Horvitz Collection, Wilmington.

Ackland Art Museum, UNC - Chapel Hill, Columbia & Franklin Streets, Chapel Hill. **Through Oct. 8** - "Reform to Restoration: French Drawings from Louis XVI to Louis XVIII (1770-1830)," presents over eighty master drawings from The Horvitz Collection, the preeminent private collection of French art in the United States, and showcases some of the most well-known artists of the period, including Jacques-Louis David, Jean-Auguste-Dominique Ingres, and Pierre-Paul Prud'hon. Working in a time of tremendous political and social upheaval in France, artists looked to the art, architecture, and literature of ancient Greece and Rome for inspiration and used stories from antique history and mythology as well as current events and contemporary theater to convey moral and civic values during a period of great uncertainty. **Museum Store Gallery** (Franklin and Columbia Street), Store hours: Mon.-Sat., 10am-5:30pm & Sun., noon-5pm. Museum Hours: Wed.-Sat., 1-5pm. Contact: 919/966-5736 or at (www.ackland.org).

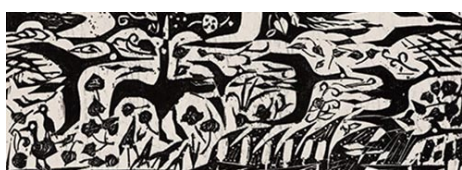
New Location

FRANK, 370 E Main St. Carrboro, Carrboro's East Main Square, next to Hickory Tavern and the Hampton by Hilton hotel, Chapel Hill. **Ongoing** - Featuring work from over 70 artists, Frank offers more than you'd expect from an art gallery. Frank is a collective, founded by the area's finest artists working together to open the door for creative innovation in the arts. Hours: Tue.-Sat., noon-5pm or by appt. Contact: Contact: 919/636-4135 or at (www.frankisart.com).

The ArtsCenter, 300-G East Main Street, Carrboro. **Ongoing** - Nurturing the arts in the triangle since 1974 through performance, education and exhibition. Hours: Mon.-Fri., 9am-9pm and Sat. 10am-5pm. Contact: 919/929-2787 or at (<http://artscenterlive.org>).

Charlotte Area

Uptown and Ballantyne areas, Sept. 15 - Oct. 1, 2023 - "Charlotte International Arts Festival," the annual celebration of imaginative visual and performing arts. The Charlotte International Arts Festival (CIAF), a Blumenthal Performing Arts Original, uniquely brings together Charlotte's local and international communities with global artists in a cultural celebration filled with live performances, art installations, food from around the world and more. For complete info visit (charlot-teartsfest.com).



Shikō Munakata, "Untitled" (detail), 1962, Woodcut on paper, 15 x 23 7/16 in. © 2023 Shikō Munakata

Bechtler Museum of Modern Art, Levine Center for the Arts, 420 South Tryon St., Charlotte. **Second Floor Gallery, Through Nov. 26** - "Art of Another Kind: Selections of Art Informel." Art Informel is a radical approach to abstraction that emerged in Europe in the years following World War II. In response to the horrors of the war, many artists rejected what they believed was realism's susceptibility to nationalistic narratives, and sought to develop a universal visual language that communicated freedom, individual expression, and inner states of being. Championing this new artistic tendency, in 1952 the French curator and art critic Michel Tapié organized the groundbreaking exhibition *Un Art Autre—or Art of Another Kind*—and published an accompanying catalogue, in which he coined the term "Art Informel." **Third Floor Gallery, Through Nov. 26** - "Lightness and Weight: Japanese Art from the Collection." This exhibition foregrounds work by Japanese artists in the Bechtler Museum's permanent collection, including Shikō Munakata (1903–1975), Kumi Sugaï (1919–1996), and Tetsuya Yamada (born 1968), all of whom are recognized for their innovative approaches to time-honored Japanese artmaking materials and forms. Employing bold and emotive lines, Munakata is best known for his woodblock prints that merged traditional Japanese art with a visual vocabulary influenced in part by European Post-Impressionism and German Expressionism. Kumi Sugaï likewise looked to both East Asian and Western sources. **Fourth Floor Gallery, Sept. 23 - Jan. 21, 2024** - "Teresa Hubbard / Alexander Birchler: Flora." Teresa Hubbard / Alexander Birchler: Flora features the Swiss American duo's multimedia project based on their discoveries about the previously unknown American artist Flora Mayo. Hubbard / Birchler have been working collaboratively since 1990, employing video, sound, photography, and other mediums to explore connections between history, memory, social relationships, and narratives both factual and imagined. Flora and the accompanying work "Bust" (both 2017) spotlight the life of Flora Mayo, who in the 1920s studied alongside Swiss sculptor Alberto Giacometti at the Académie de la Grande Chaumière in Paris, and with whom she had a romantic relationship. **Fourth Floor Gallery, Sept. 23 - Jan. 21, 2024** - "Giacometti and the Artists of the Grande Chaumière." Assembled from the Bechtler Museum's permanent collection, this installation is conceived as a pendant to the exhibition *Teresa Hubbard / Alexander Birchler: Flora*, and will feature work by an international array of artists who studied or taught at the Académie de la Grande Chaumière in Paris during the early 20th century. The famed art school was a gathering place for many avant-garde artists—including Alberto Giacometti and Flora Mayo—who sought to break away from academic conventions and experiment with new forms of expression. This focused

exhibition invites viewers to explore a diverse range of work by artists associated with the Grande Chaumière, conveying the influences, dialogues, and creative exchange that took place between them. **Ongoing** - The Bechtler Museum of Modern Art is named after the family of Andreas Bechtler, a Charlotte resident and native of Switzerland who assembled and inherited a collection of more than 1,400 artworks created by major figures of 20th-century modernism and donated it to the public trust. The Bechtler collection comprises artworks by seminal figures such as Alberto Giacometti, Joan Miro, Jean Tinguely, Max Ernst, Andy Warhol, Alexander Calder, Le Corbusier, Sol LeWitt, Edgar Degas, Nicolas de Stael, Barbara Hepworth and Picasso. Only a handful of the artworks in the Bechtler collection have been on public view in the United States. Admission: Yes. Hours: Mon., Wed.-Sat., 10am-5pm; Sun. noon-5pm; and open until 9pm the 1st. and 3rd. Fri. of each month. Contact: 704/353-9200 or at (www.bechtler.org).

Bill and Patty Gorelick Gallery, at Central Piedmont Community College's Cato Campus, Cato III, 8120 Grier Road, Charlotte. **Through Dec. 8** - "Stories From Within Annie Nash-old". Storytelling is central to my work where images emerge through narrative portraits, abstracted figures, subconscious drawings, and family archives. The beauty of nature, humanity, memory, experience, mystery, color, and dreams inspire me. During the Pandemic, I have spent many hours in the studio experimenting and playing with materials and imagery. By June 2020, I found myself drawing every evening with gel pen and small sketchbook. I begin with no intention when drawing. I don't know whether the subconscious mind is seeping up into the conscious mind or if the conscious mind is seeping down into the subconscious mind, either way I do not question it. The journey involves embracing the mystery of stories that unfold. I look and I respond, I feel and I respond, I wonder and I respond, I don't know and I respond. I just let it all happen as it does. Working in mixed-media I create paintings, drawings and collages. Layering color, drawing, and collage create a tapestry of expressive imagery. Acrylic paint, Oil Pastels, Collage, Graphite, Inks, Pastel Crayons, Charcoal, and Graphite Powder are materials I enjoy playing with. Hand printed and stained rice papers become part of the layering. Through the beauty of art and the complexity of life, my current works explore the strength, courage, joy, dignity, challenge, love, trauma, humor, and compassion that we all share. The stories can connect us in ways we never expected and ways we come to feel as part of ourselves. The viewer brings their own experience to the work as we do in life when we meet each other. As the tale unfolds these images show the ordinary with all its beauty, uniqueness, complexity, magic, and mystery that we all hold within. Hours: open while campus is open, but reservations help us alert our security team to visitors, provide directions to the galleries, and COVID-19 security protocol instructions to the visitors. Contact: 704/330-6869 or e-mail to (foundation@cpcc.edu) to schedule an appointment. For directions to Central Piedmont's campuses, visit (cpcc.edu/locations).

Bill and Patty Gorelick Gallery, at Central Piedmont Community College's Central Campus, North Classroom, 1320 Sam Ryburn Walk, Charlotte. **Through Dec. 8** - "Clay Art Bender by Greg Scott" Hours: open while campus is open, but reservations help us alert our security team to visitors, provide directions to the galleries, and COVID-19 security protocol instructions to the visitors. Contact: 704/330-6869 or e-mail to (foundation@cpcc.edu) to schedule an appointment. For directions to Central Piedmont's campuses, visit (cpcc.edu/locations).



Work by Sudie Rakusin

Bill and Patty Gorelick Gallery, at Central Piedmont Community College's Harper Campus, Harper IV, 315 W. Hebron St., Charlotte.

Through Dec. 8 - "Layer and Lines," featuring works by Sudie Rakusin. Rakusin says, "Being an animal activist and feminist, my artwork flows from what moves me and from where I find beauty: women, animals, the earth, color, pattern and light. My art represents the deep connection I feel with these elements. Through my artwork I create a world as I would like it to be, where harmony exists between animal and human, and where nature thrives. My work includes pen and ink drawings, papier-mâché sculptures, abstracts in cold wax and oil, and 3-dimensional oil on canvas paintings featuring women and animals. "Art is where I go for refuge, replenishing, and how I pay homage to what sustains me. This body of work is cold wax and oil on wood panels. The properties of cold wax fascinate me and keep me curious; how the underlying layers inform and alter the layers applied over them, how incising and scraping and glazing make more changes. I know I am wielding the palette knife and mixing the colors, but what happens on the panel is beyond my control. I'm learning how to be fine with the state of 'not knowing'." **Through Dec. 31** - "Journey Through Life by Jodi Lynn McNeely". Charlotte artist Jodi Lynn McNeely has a drive to paint something, make something, or fix something. After taking numerous art classes at Central Piedmont Community College and participating in several ceramic workshops, Jodi built a studio and gallery on her property in South Charlotte. Her Industrial Design Bachelors Degree, ceramics education, and free form carvings have emerged as her signature style, creating unique pieces with structural integrity and aesthetic interest. Originally from Texas, Jodi is influenced by Mexican and Chinese Folk Art. Her brightly colored work often includes re-purposed wrought or cast iron. A form of journaling, her carvings many times feature people she has met on her journey. Hours: open while campus is open, but reservations help us alert our security team to visitors, provide directions to the galleries, and COVID-19 security protocol instructions to the visitors. Contact: 704/330-6869 or e-mail to (foundation@cpcc.edu) to schedule an appointment. For directions to Central Piedmont's campuses, visit (cpcc.edu/locations).

Bill and Patty Gorelick Gallery, at Central Piedmont Community College's Harris Campus, Harris II, 3210 CPCC Harris Campus Drive, Charlotte. **Through Dec. 8** - "50-year Retrospective," featuring works by Shane Fero. Shane Fero was born in Chicago, IL in 1953 and has been a flameworker for 50 years and maintains a studio next to Penland School in North Carolina. He participates in international symposia and conferences by lecturing and demonstrating. Fero is also an educator and has taught at institutions such as Penland School, Urban Glass, the Pratt Fine Arts Center, the Studio of the Corning Museum of Glass, the University of Michigan, Eugene Glass School, Espace Verre, Montreal, Quebec, the Pittsburgh Glass Center, Pilchuck Glass School, Bild-Werk, Frauenau, Germany, the International Glass Festival in Stourbridge, UK, Scuola Bubacco, Murano, Italy, Chameleon Studio, Tasmania, Taiwan, China, Australia, Turkey and in Seto, Osaka, and the Nijijima Glass Art Center in Japan. **Through Dec. 8** - "Simple Gifts," featuring works by Lynn Newman. Newman moved to North Carolina in March 2020, after retiring from a career as an art teacher and program coordinator in Wyoming. Secluded in his new home during the onset of the pandemic, he sought comfort in his painting, focusing on florals and landscapes. He started working on a series of paintings based on the parks and scenes he and his wife enjoyed during their daily walks in their new surroundings. Painting helped him feel grounded and provided a sense of hope. Newman says, "In this time of uncertainty – emotionally, politically, and physically – it's my hope that others might interpret their own sense of solace and hope for the future with gifts as simple and as powerful as the flowers and landscapes we discover in our own backyards" Hours: open while campus is open, but reservations help us alert our security team to visitors, provide directions to the galleries, and COVID-19 security protocol instructions to the visitors. Contact: 704/330-6869 or e-mail to (foundation@cpcc.edu) to schedule an appointment. For directions to Central Piedmont's campuses, visit (cpcc.edu/locations).

Bill and Patty Gorelick Gallery, at Central Piedmont Community College's Levine Campus, Levine II, 2800 Campus Ridge Road, Matthews. **Through Dec. 8** - "Layers and Lines," featuring works by Sudie Rakusin. Rakusin says, "Being an animal activist and feminist, my artwork flows from what moves me and from where I find beauty: women, animals, the earth, color, pattern and light. My art represents the deep connection I feel with these elements. Through my artwork I create a world as I would like it to be, where harmony exists between animal and human, and where nature thrives. My work includes pen and ink draw-

continued on Page 55