

Hillsborough Gallery of Arts in Hillsborough, NC, Offers New Exhibit

The Hillsborough Gallery of Arts in Hillsborough, NC, will present *Color Comes Alive*, which highlights the work of artists Marcy Lansman, Pat Merriman and Pringle Teetor, on view from Sept. 24 through Oct. 20, 2024. A reception will be held on Sept. 27, from 6-9pm.

Many of Marcy Lansman's paintings have been inspired by what she sees on walks in the woods near her home in Chapel Hill, NC. Lansman begins with an underpainting of bright patches of color. Then, using a palette knife, she fills the painting with random strokes that together create the illusion of light hitting trees. Speckles of color from the underpainting show through the random shapes created by the palette knife.

"The effect," says Lansman, "is to liven up the painting, mimicking splashes of light we see in nature." This technique is especially suited to paintings of trees since, from a distance, the leaves on a tree look like random patches that vary not only in brightness, but in color."

Lansman wants her paintings to take the viewers out of their busy world into the peace and quiet of the woods.



Work by Marcy Lansman

"At first, I just practiced simple forms" said Teetor, "but I made them a little different. I picked random colors for these pieces as I was mainly practicing, but they turned out very well. Footed bowls are something I love to make but have struggled with in the past because of my shoulder problems."

"With *Color Comes Alive* as the theme of the show, I put colors together for bright contrast, like purple and orange for some of the bowls," says Teetor.

Teetor also has carved pieces in the show, a cold decorative technique called battuto, done with diamond wheels on a lathe. It is a very lengthy, tedious technique, and requires planning layers of color so that cutting through one layer reveals another color underneath.

"Years ago, I fell in love with the motion and dance of the heat and fire," she adds. "It blends physical, technical and artistic skills. It's physically demanding and hard on the body. It's exhausting, but yet, I still love it."

The Hillsborough Gallery of Arts is owned and operated by 21 local artists exhibiting contemporary fine art and fine craft. The Gallery's offerings include oil, acrylic and watercolor paintings, metal sculpture, figurative sculpture, ceramics, photography, photomontage, painted gourds, mixed media, jewelry, glass, and handcrafted furniture. The gallery is located on N. Churton Street in Hillsborough, NC.

For further information check our NC Commercial Gallery listings, call the gallery at 919/732-5001 or visit (HillsboroughGallery.com).



Work by Pat Merriman

Pat Merriman's paintings reflect her love of North Carolina, her native state. Constant experimentation keeps her work fresh, innovative, interesting and unique. "I am inspired to try new techniques, paints, and brushes and see what they add to my work. Currently I am exploring the use of different techniques and materials to create snow scenes." Experimentation helps encourage creativity, and broadens an artist's perspective. "I believe it breathes life into artwork," says Merriman, "and hope you will come see what it has brought to my work in this show."

This year has been challenging for glassblower Pringle Teetor. She missed almost 3 months in the studio due to shoulder surgery and was not able to get back until mid-June.

Gallery C in Raleigh, NC, Features Works by Ana Guzman and George Snyder

Gallery C in Raleigh, NC, will present *Maximum Chroma: Paintings by Ana Guzman and Sculpture by George Snyder*, on view from Sept. 5 - 28, 2024. A reception will be held on Sept. 6, from 6-8pm.

There are three traits that describe every color: hue, value and chroma. Hue are the color families – the rainbow. Value means light or dark with Zero being black and Ten being pure white. Chroma is the strength or saturation of a color – it's intensity, it's purity.

Gallery C brings two artists who work in *Maximum Chroma*. Ana Guzman is a painter and George Snyder a sculptor. This exhibition explores how these two artists' energetic and bold use of color creates alluring artworks that engage and stimulate the viewer.


George Snyder, whose career dates to the 1970's, presents a collection of free-standing tube objects. The cylinder-tube is the "most basic element" in his work Snyder says. The cylinders are assembled in geometric post-modern towers. The hard glazed surfaces are car paint, the pure colors so vibrant that they are almost phosphorescent. A coating of wax polishes the color outbursts to a high lacquer shine. The surface is seductively smooth and sensual.



Work by George Snyder

Ana Guzman, who hails from Cuba, paints scenes vibrating with life. Often using a palette knife, she applies pure color energetically to her canvas. The spontaneous exhilaration of her process is clearly transmitted to the viewer/participant. Her

continued above on next column to the right



TRIANGLE
ART
WORKS

Making Arts Work in the Triangle.

CONNECT • INFORM • CREATE • SUPPORT • PROMOTE

Triangle Art Works is a non-profit organization dedicated to providing services, support and resources to the visual and performing arts and creative industries.

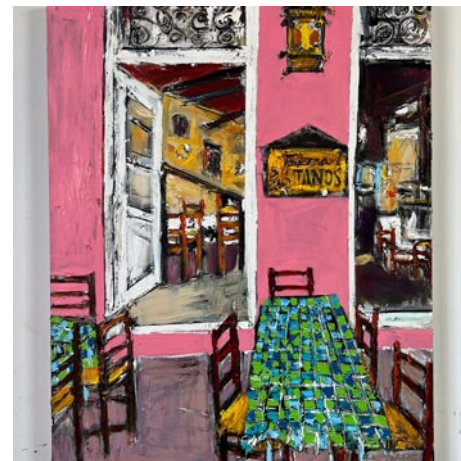
Triangle Art Works can help you connect quickly and easily with the arts community to find arts-related groups, resources, jobs, and news.

WWW.TRIANGLEARTWORKS.ORG
INFO@TRIANGLEARTWORKS.ORG
FACEBOOK.COM/TRIANGLEARTWORKS
TWITTER: @TRIARTWORKS

color choices, often set against pure white, create an invigorating atmosphere in her work.

Snyder is a precisionist of edge and style. Guzman is a master of controlled inexactness. Both employ *Maximum Chroma* to enhance their viewers emotions.

For further information check our NC Commercial Gallery listings, call the gallery at 919/828-3165 or visit (art@galleryc.net).



Work by Ana Guzman

Some Exhibits That Are Still On View

Our policy at *Carolina Arts* is to present a press release about an exhibit only once and then go on, but many major exhibits are on view for months. This is our effort to remind you of some of them.



Ashley Norwood Cooper (born 1970) "Campfire with Ghost Rabbits" 2022. oil on linen

The Greenville County Museum of Art (GCMA) in Greenville, SC, is presenting an exhibit of works by Ashley Norwood Cooper, on view through Sept. 8, 2024. Born and raised in Greenville, SC, Ashley Norwood Cooper (born 1970) received her BA from the University of Georgia, where she majored in Latin. She taught Latin for a time, before moving to Bloomington, Indiana, where she earned her MFA in Painting from Indiana University in 2000. Cooper's work depicts intimate, middle-class life in vibrant colors applied with bold, expressive brushstrokes. Optimistic and hopeful, her scenes of seeming domestic tranquility also hint at the unpredictability and fragility of family life and community. Informed by Abstract Expressionism, her large-scale figurative paintings have been the subjects of numerous solo and group exhibitions in the United States. For further information call the Museum at 864/271-7570 or visit (www.gcma.org).



Work by Phyllis Allen Elfert

The Tryon Fine Arts Center in Tryon, NC, is presenting an exhibition of works by the late Phyllis Allen Elfert, featuring

paintings, drawings, bronze and paper mache sculptures, on view in the JP Gallery, through Sept. 14, 2024. Beloved Tryon artist Phyllis Allen Elfert (1932-2018) left an indelible mark that still captivates audiences. Her pieces reflect evocative and sometimes whimsical creativity that refuses to settle for a single form of expression. It is said that when you experience Elfert's work, you are reminded that art is not conceived in a moment, but is the result of decades of study, hours of practice, trial and error, and passion that pours forth in her work. After receiving her BFA, she continued her art education at Moore Institute of Art, The Pennsylvania Academy of Fine Arts and the Barnes Foundation. At this time horses were not in the picture and it was not until after she was married that she was given a gift of a lovely three year old gelding from her husband. There was a lot of work for her to bring this "green horse" along and she needed help from a professional. Living, at the time, in Bedford, NY, there were quite a few good horsemen from which to choose. For further information call the Center at 828/859-8322 or visit (www.tryonarts.org).



Work by Jordan Sheridan

The 701 Center for Contemporary Art in Columbia, SC, is presenting *Womb Rooms*, an installation by Artist in Residence Jordan Sheridan, on view from Aug. 22 through Oct. 6, 2024. *Womb Rooms*, an installation by Artist in Residence Jordan Sheridan, who investigates the intricate realms of motherhood and identity through her unique blend of textile installations. Born in Northeastern Arkansas in 1989, Sheridan's artistic trajectory has been deeply shaped by her experience as a mother, particularly since the birth of her son Samuel in 2017. Her pursuit of an MFA degree at the University of South Carolina marked a pivotal moment in her artistic evolution, catalyzing a shift from 2-D painting to large-scale textile installations. During her residency, Sheridan has

continued on Page 33