

SC Commercial Galleries

continued from Page 46

The Art Lounge, 500 E. Main Street, Spartanburg. **Ongoing** - Local art and artists come "hang" at The Art Lounge. Monthly art events, painting workshops, and weekend "art markets" are just part of what The Art Lounge has to offer. Custom frame shop and gallery with the newest frame samples and designs. Custom mirrors, shadowboxes, canvas stretching and framing, and more. Hours: Mon.-Thur., 10am-5pm & Fri., 10am-4pm or by appt. Contact: 864/804-6566 or at (www.artlounge1.com).

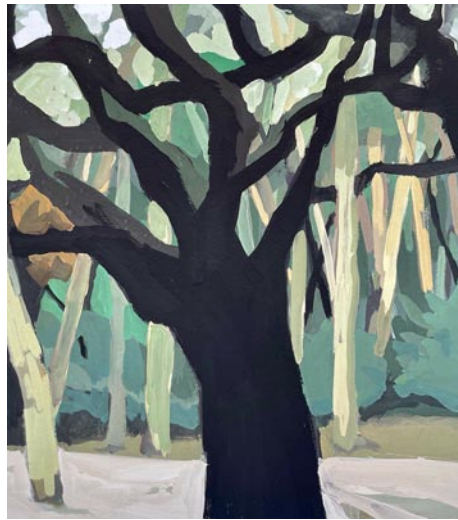
Summerville

Art on the Square - Summerville, 420 Nexton Square Drive, Summerville. **Ongoing** - ART on the Square is a fine art gallery now opened at the Nexton community in Summerville, SC. The gallery represents over 30 local award-winning artists offering painting, photography, sculpture, pottery, jewelry, stained glass and mosaics. Our location at Nexton Square is easily accessible with free parking and is located next to premier shopping and dining! Hours: daily 11am-8pm. Contact: 843/871-0297 or at (<https://artonthe-square.gallery/>).

Four Green Fields Gallery & Gifts, 117-A Central Ave., Summerville. **Ongoing** - Featuring the new home of Silver Pail Pottery by potters Jillian and Robin Carway. The gallery showcases the work of 45+ American fine craft artists with an emphasis on local and South Carolina artisans. Offering a wide range of talent from the master potter to the emerging silversmith. Other media represented include fiber, wood, photography, baskets, paper, glass, metal, leather and handmade artisan products. Craft artists interested in exhibiting with Four Green Fields can find an "Artist Info Packet" on the website. Hours: Mon.-Sat., 10am-5pm. Contact: 843/261-7680 or at (www.fourgreenfieldsgallery.com).

Imperial Framing & Specialties, 960 Bacons Bridge Road, Palmetto Plaza, Summerville. **Ongoing** - Featuring works by Lowcountry artists. Hours: Mon.-Fri., 10am-6pm & Sat., 10am-2pm. Contact: 843/871-9712.

Karyn Healey Art, just off Hutchinson Square in the heart of Summerville. **Ongoing** - Karyn is a painter observing life in the Lowcountry of South Carolina, focusing on stories of daily life and social issues in oil paint, gouache, casein,



Work by Karyn Healey

and collage. Hours: Open by appointment only. Contact: Call 843/609-7404; (<https://www.instagram.com/karynhealeyart/>) or (<https://m.facebook.com/KarynHealeyArt>).

People, Places, & Quilts, 129 W. Richardson Avenue, Summerville. **Ongoing** - Featuring fabric, books, patterns, notions, quilts and Folk Art. Hours: Mon.-Fri., 10am-5:30pm and Sat., 10am-5pm. Contact: 843/937-9333 or at (www.ppquilts.com).

Travelers Rest

White Rabbit Fine Art Gallery, 5 So. Main Street, Travelers Rest. **Ongoing** - Our ongoing exhibit is ever-changing and features the work of the founding members of the Gallery; all are local artists from the Upstate area. Hours: Tue.-Sun., 11am-5pm; Fri. & Sat., 11am-6pm and lter on First Fri. Contact: Patty Cunningham at 610/659-4669; or Susan Savage at 864/903-3371; or at (<http://www.artintr.com/white-rabbit-gallery.html>).

Wild Hare Gallery & Studios, 212 N. Poinsett Hwy., Travelers Rest. **Ongoing** - Wild Hare Gallery is Travelers Rest's newest art gallery, owned by local artists Kym Easter and Joann Benzinger. The focus of the WH Gallery is on modern, local arts and fine crafts. Guest artists are exhibited for three to six months; this allows for new and interesting art at all times. Hours: Tue.-Fri., 11am-4pm or by appt. Contact: call 864/630-1423. 864/444-1152 or at (www.wildharegallery.com).



"Forces of Nature: Ceramics from the Hayes Collection" (installation view) Asheville Art Museum, 2024

tion is guest-curated by Katherine Ware, curator of photography at the New Mexico Museum of Art, and features over 125 artworks organized into three sections: Inside/Out, Together/Apart, and Natural/Unnatural. Each section explores seemingly opposing forces, prompting viewers to reconsider the nuances and complexities of life. "Our brains gravitate toward hard distinctions, but life is filled with gradations, complexities, and ambiguities. The categories offer a context for considering the pictures," said Ware. "They sound like opposites, but it is up to visitors to decide if these dualities are different or part of a continuum." **The Van Winkle Law Firm Gallery, Through Oct. 21** - "Honoring Nature: Early Southern Appalachian Landscape Painting". This exhibition explores the sublime natural landscapes of the Smoky Mountains of Western North Carolina and Tennessee. While there were several regional schools of painting around the early 1900s, this group is largely from the Midwest, and many of the artists trained at the Art Institute of Chicago or in New York City. Through their travels, they captured waterfalls, sunsets, thunderstorms, autumn foliage, lush green summers, and snow-covered mountains—elements that were novel for viewers from cities and rural areas. Though some of these paintings include people, they are usually used for scale and painted with little to no detail, highlighting the magnificence of nature. **Debra McClinton Gallery, Through Mar. 31, 2025** - "Forces of Nature: Ceramics from the Hayes Collection". Ceramic artists throughout history have become masters of all four elements - creating clay from a mixture of earth and water to shape their work, drying it in air, and hardening it in fire. Throughout this process, the artist decides which aspects of the work will be tightly controlled, and when the elements can step in to leave nature's mark. This exhibition traces the historical, stylistic, and conceptual origins of work that either embraces or refuses the element of chance in ceramics, looking at modern and contemporary work made in Western North Carolina. The ceramics in this exhibition are all drawn from the robust collection of Andrew and Hathia Hayes, who have been collecting important regional pottery and sculpture for decades. Through their close relationships with artists, they have brought together works that show not only the different aesthetics seen in the region, but also a picture of the ceramics community. Regional artists including Cynthia Bringle, Donna Craven, Mark Hewitt, Fred Johnston, Ben Owen III, and Norm Schulman will be on view, demonstrating the many different approaches to ceramics in this region. **Judith S. Moore Gallery, Through Oct. 7** - "Western North Carolina Glass: Selections from the Collection". Western North Carolina is important in the history of American glass art. Several artists of the Studio Glass Movement came to the region, including its founder Harvey K. Littleton. Begun in 1962 in Wisconsin, it was a student of Littleton's that first came to the area in 1965 and set up a glass studio at the Penland School of Craft in Penland, North Carolina. By 1967, Mark Peiser was the first glass artist resident at the school and taught many notable artists, like Jak Brewer in 1968 and Richard Ritter who came to study in 1971. By 1977, Littleton retired from teaching and moved to nearby Spruce Pine, North Carolina and set up a glass studio at his home. Since that time, glass artists like Ken Carder, Rick and Valerie Beck, Shane Fero, and Yaffa Sikorsky and Jeff Todd—to name only a few—have flocked to the area to reside, collaborate, and teach, making it a significant place for experimentation and education in glass. **Ongoing** - The Asheville Art Museum, the hub for 20th- and 21st-century American art in Western North Carolina, has re-opened to the public. The \$24+ million, state-of-the-art facility encompasses 54,000 square feet and adds 70 percent more Collection gallery space. For the first time in the Museum's history, it has the capacity to host major traveling exhibitions from nationally recognized museums. The expansion increases its physical space and dramatically increases its role as a community center, educational resource, economic engine for WNC, and cultural concierge for the region's residents and visitors. Admission: Yes. Hours: Tue.-Sat., 10am-5pm; Fri. till 8pm & Sun., 1-5pm. Contact: 828/253-3227 or at (www.ashevilleart.org).

Asheville Gallery of Art, Ltd., 82 Patton Avenue, across from Pritchard Park opposite the old location, Asheville. **Ongoing** - Featuring original works of art by 31 local artists in oils, acrylics, watercolor, pastel, encaustic, and prints. Hours: Mon., 11am-6pm & Fri.-Sat., noon-5pm

or by appt. Contact: 828/251-5796 or at (www.ashevillegallery-of-art.com).



Kenelm Winslow, untitled photograph, student working on college farm, c. 1936-38. Kenelm Winslow, Fotofolio, collection of Black Mountain College Museum + Arts Center. Gift of Kenelm Winslow, Jr.

Black Mountain College Museum + Arts Center, 120 College Street, Asheville. **Through Sept. 7** - "Robert Chapman Turner: Artist, Teacher, Explorer". Robert Turner (1913-2005) arrived at Black Mountain College in 1949 to establish the first studio pottery program at the College. He worked with student architect Paul Williams to design the Potshop and stayed until 1951 as a teacher and potter. There he formed lifelong friendships with M.C. Richards, Joe Fiore, and Natasha Goldowski Renner, and was part of the lively mix of art and ideas generated by Clement Greenberg, Katherine Litz, Kenneth Noland, Theodoros Stamos, and many others. Turner's education prior to his arrival at Black Mountain included Swarthmore College, Pennsylvania Academy of Fine Arts, The Barnes Foundation, Penland School of Crafts, and Alfred University. After Black Mountain, Turner and his family moved to Alfred Station, NY where they bought a farm, and he established a successful studio pottery practice and actively exhibited his work in galleries across the U.S. In 1958 he began teaching pottery and sculpture at Alfred University where he became an essential part of the art department until his retirement in 1979. **Sept. 27 - Jan. 11, 2025** - "The Farm at Black Mountain College". A reception will be held on Oct. 25, from 7-9pm. The story of Black Mountain College (BMC) has grown to mythical proportions since the liberal arts school officially closed its doors in 1957. Countless books, exhibitions, and artworks have been created to capture what it was like to live and learn at this singular college and to chart its unparalleled cultural legacy. But before this exhibition and accompanying book, nobody had written about the farm at BMC in any great detail. Built on more than a decade's worth of deep, original archival research, "The Farm at Black Mountain College" exhibition constitutes a deep new history of BMC. By focusing on the farm, the exhibition sidesteps the popular paradigm of approaching BMC through its famous faculty and students, and instead offers a new cast of characters, one that includes mostly students, women, and farmers. It spotlights the importance of collaboration, both on campus among students, faculty, and faculty families, and in the community with farmers and organizations in nearby cities and towns. Finally, the exhibition shows what happens when communal living is no longer communal, and offers a detailed account of the final dark days of the college, a dramatic and often dangerous story. **Ongoing** - An exhibition space dedicated to exploring the history and legacy of the world's most acclaimed experimental educational community, Black Mountain College. Hours: Wed.-Sat., noon-4pm or by appt. Contact: 828/350-8484 or at (www.blackmountaincollege.org).

NC Homespun Museum, next to Grovewood Gallery, at Grove Park Inn, 111 Grovewood Road, Asheville. **Ongoing** - This museum presents a historical overview of Biltmore Industries, an Arts and Crafts enterprise once renowned for its hand-loomed fabrics. The museum showcases memorabilia including photographs, letters, artifacts, woven samples and tailored suits from the active years of the industry. Located on the historic Grovewood grounds, adjacent to The Omni Grove Park Inn. Admission is free (donations appreciated). Hours: Mon.-Sat., 10am-5pm, & Sun., 11am-5pm. Contact: 828/253-7651.

NC Glass Center, 140 Roberts Street, Suite C, Asheville. **Ongoing** - The North Carolina Glass Center is a non-profit, public access glass studio providing daily educational offerings & demonstrations. We are proud to represent the work of our artists and instructors in the NCGC glass gallery. Hours: Mon., Wed., Thur. & Sun., 10am-5pm and Fri. & Sat., 10am-6pm. Contact: 828/505-3552 or at (www.ncglasscenter.org).

Odyssey Co-Op Gallery, 238 Clingman Avenue, Asheville. **Ongoing** - Our Gallery features works by 25 local clay artists, working in a variety of styles to create functional and non-functional pottery and works of figurative and abstract sculpture. Hours: Wed.-Mon., 11am-5pm. Contact: 828/505-8707 or at (<https://www.odysseycoopgallery.com/about/>).

NC Institutional Galleries

Aberdeen

The Exchange Street Gallery of Fine Art, 129 Exchange Street, in the old Aberdeen Rockfish Railroad storage terminal, Aberdeen. **Ongoing** - The Artist's League of the Sandhills currently houses 35 artists-in-residence studios and offers classes by local professional artists and workshops by nationally known artists. Hours: Mon.-Sat., noon-3pm. Contact: 910/944-3979, or at (www.artistleague.org).

Alamance County

BAL Gallery, Holly Hill Mall and Business Center, 309 Huffman Mill Rd., Exit 141 off of I85/I40, Burlington. **Ongoing** - Since the beginning of Burlington Artists League in 1972, we have grown to represent many local artists in our immediate area. BAL's express purpose is to promote and elevate the area artists and their fine art spirit in Burlington, NC, and surrounding areas, thereby creating outlets for the artists and encouraging their continuing efforts to improve and create more art work. Along with wall art and bin reproductions, the BAL Artists Gallery also includes 3-D art such as sculptures and pottery. Hours: Mon.-Fri., noon-8pm; Sat., 10am-9pm, & Sun. for special events. Contact: 336-584-3005 or at (<https://burlingtonartist-league.com/>).

1873 Capt. James & Emma Holt White House, 213 South Main Street, 2 1/2 blocks off I85/I40, exit#147, Graham. Home of the Alamance County Arts Council. **Sister Galleries & Suntrust Gallery, Through Sept. 10** - "A Salute to Alamance". It showcases the artwork of local Veterans in our community. **Sept. 18 - Oct. 18** - Featuring the works by members of the Alamance Photography Club. **Ongoing** - We are committed to shaping the cultural identity of Alamance County by making art a tangible presence in the lives of its citizens. We strive to enhance the quality of life by engaging people in a diverse array of art through the delivery of programming

and education, and through the provision of facilities, advocacy, promotion, and funding. **Ongoing** - Picasso's Gift Shop, located in the Captain White House, promises unique finds of local, regional, and international art. The beautiful arts and craft items sold in the store help support the artist in the community. Featuring a wide variety of art, pottery and glass. Admission: free. Hours: Mon.-Sat., 9am-5pm. Contact: 336/226-4495 or at (www.alamancearts.org).

Albemarle

Falling Rivers Gallery, 330-N Second Street, Albemarle. **Sept. 4 - 28** - "Nature At Its Best -16th Annual Ellen Cook Gaskin Memorial Art Competition & Show". **Ongoing** - The gallery is a cooperative venue of the Stanly Arts Guild. Member staffed, this gallery offers the very best in local art and crafts including oil and watercolor, photography, pottery and ceramic art, jewelry, native American art, gourd sculpture and much more. Hours: Tue.-Fri., 10am-5pm; Thur. till 6:30pm & Sat., 10am-4pm. Contact: 704/983-4278 or at (www.fallingrivers-gallery.com).

Apex

Throughout the downtown area of Apex, Through Mar. 2025 - "4th Annual Apex Sculpture Walk". This exhibition offers works by established and emerging professional artists on display throughout the heart of beautiful downtown Apex. For further info visit (<https://www.apexnc.org/1642/Apex-Sculpture-Walk-2024-2025>).

Asheville Area

Asheville Art Museum, 2 South Pack Square at Pack Place, Asheville. **Explore Asheville Exhibition Hall, Through Sept. 23** - "Shifting Perceptions: Photographs from the Collection". This exhibition continues the Museum's 75th-anniversary celebration and magnifies its expanding Collection of photographs. This exhibi-