

NC Commercial Galleries

continued from Page 70

as an art piece. Hours: Mon.-Sat., noon-5pm or by appt. Contact: 828/452-2550 or at (<https://burl-gallery.com/products/burl-wood-sculpture>).

T. Pennington Art Gallery, 15 N. Main Street, Waynesville. **Ongoing** - Featuring pencil drawings of local scenery, and landmarks by Teresa Pennington, including originals, prints and gift items. Also framing is available. Hours: Mon.-sat., 10am-5pm. Contact: 828/452.9284 or at (www.tpennington.com).

The Jeweler's Workbench, 80 N. Main St., Waynesville. **Ongoing** - Specializing in fine hand-crafted jewelry, custom design and repair, limited edition watches and jewelry boxes. Featuring award-winning artists of the Great Smoky Mountains and from across the country. Hours: Mon.-Sat., 10am-5:30pm. Contact: 828/456-2260.

Twigs & Leaves, 98 N. Main Street, Waynesville. **Ongoing** - Featuring the nature-related porcelain works with leaves by Kaaren Stoner, as well as other works by regional artists and craftsmen. Hours: Mon.-Sat., 10am-5:30pm. Contact: 828/456-1940 or at (www.twig-sandleaves.com).

Weaverville

Mangum Gallery, 16 North Main Street, Weaverville. **Ongoing** - Featuring functional and decorative pottery dinnerware. Hours: Mon.-Fri., 9am-5pm and Sat., 10am-4pm. Contact: 828/645-4929 or (www.mangumpottery.com).

Miya Gallery, 31 N. Main St., Weaverville. **Ongoing** - The gallery is a new and refreshing addition to the WNC art scene. We exhibit work of over 50 artists: fine jewelry, clay, wood, glass, metal, fiber, photography and two dimensional art. Hours: Tue.-Fri., 10am-6pm; Sat., 10am-5pm & Sun., noon-4pm. Contact: 828-658-9655 or at (www.miyagallery.com).

West Jefferson/Jefferson

Ashe Custom Framing & Gallery, 105 S. Jefferson Ave., West Jefferson. **Ongoing** - Featuring a varied selection of originals and prints by local and regional artists. Also, a wide array of pottery and handcrafted wooden vases. Hours: Tue.-Fri., 10am-5pm & Sat., 10am-2pm. Contact: 336/246-2218.

Broomfields Gallery, 414 E. 2nd St, (across from the post office), West Jefferson. **Ongoing** - Featuring an exhibition of works by NC and SC artists in various mediums in a setting of quality antiques. Hours: Tue.-Sat., 11am-5pm. Contact: 336/846-4141 or at (www.broomfieldsgallery.com).

CatchLight Gallery, 118 N Jefferson Avenue, West Jefferson. **Ongoing** - The CatchLight gallery is dedicated solely to the art of photography. In the Spring of 2012, photographer Nicole Robinson decided to create a space where talented photographers would have an opportunity to display and sell their work. A beautiful gallery space grew from a dream into a wonderful reality, evolving into a haven which became available to both the photographers and the viewing public in the arts district of downtown West Jefferson, NC. Hours: Mon., Thur., Fri., & Sat., 11am-5pm & Sun., 11am-4pm. Contact: 336/846-1551 or at (www.CatchLightGallery.net).

Prack Studio / Sculpture Garden, 431 Sunnyside Park Road, Jefferson. **Ongoing** - Featuring sculptures by Mary-Ann Prack. Hours: open by appt only. Contact: 828/406-7046 or at (www.prackart.com).

Stephen Shoemaker Studio, 113 S. Jefferson Ave., West Jefferson. **Ongoing** - Featuring original works by watercolorist Stephen Shoemaker. Specializing in historic landscapes and paintings of places and events in/of Ashe County and the area. The "Virginia Creeper" train series is particularly popular. Hours: Mon-Fri., 10am-5pm or by chance. Contact: 336/246-3401.

Wilmington

ACME Art Studios, 711 N. 5th Ave., downtown Wilmington. **Ongoing** - Featuring artists' studios with works by Cass Baes, Gary Breece, Todd Carignan, Phil Covington, Karen Paden Crouch, MJ Cunningham, Dumay Gorham, Amy Grant, Stephanie Holt, Fritz Huber, Marshall Milton, Trey Moore, Allan Nance, Dick Roberts, Angela Rowe, Pam Toll, Michael Van Hout, and Mark Weber. Hours: Every 4th Friday Night, 6-9pm and by appointment. Contact: Amy Grant via email at grantamyn@gmail.com,

call 910/805-8424, or view Facebook at <https://www.facebook.com/acmeartstudios>.

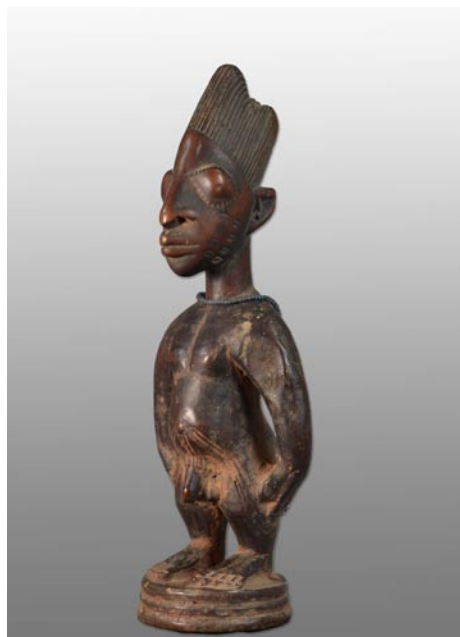


Work by Brian Evans

Art In Bloom Gallery, 6866 Main Street, Mayfaire Town Center, Wilmington. **Through Sept. 8** - "Endless Skies," featuring new work by Joanne Geisel. The exhibit will feature the newest plein-air and studio paintings of Joanne Geisel. She states "In our daily lives, we get caught up in routines and therefore limit our awareness of the possibilities. On the other hand, looking at skies can be transforming, as they can be limitless in their expansiveness, colors, and the endless formation of clouds, and through them we feel we can go beyond our limitations and even time and space. The oceans, lakes, and marshes express other dimensions of the landscapes and ourselves." **Through Sept. 8** - "Metamorphosis: Mud to Modern," featuring new works by Brian Evans & Dianne Evans. This exhibit celebrates the newest creations of the 3-dimensional, ceramic work of Brian Evans and Dianne Evans. Both artists find inspiration through patterns and textures while creating their exquisite forms as they evolve from a lump of clay. **Ongoing** - Online and in the gallery, visitors will find a mixture of traditional and contemporary paintings, sculpture, jewelry, ceramics, glass, fabric, wood, photography, and mixed media. Hours: Mon.-Sat., 10am-7pm; Sun, noon-6pm; and by appt. Contact: 484/885-3037 (mobile) or visit (<https://aibgallery.com/>).

Beck Fine Art Gallery, inside the Artworks building, 200 Willard Street (between S. Third and S. Front Streets) Wilmington. **Ongoing** - The gallery is founded by Dan Beck, an internationally renowned and award-winning impressionist painter whose figures, still life and landscape paintings have been exhibited across the country. The other exceptionally talented and accomplished resident artists include Kari Feuer, Susan Fishbein, Ann Hair, Pappy Khouri, Heidi-Lee Peach, Ora Sorensen, Peggy Vineyard and Jenny McKinnon Wright. Current guest artists are celebrated painters Richard Oversmith and Jove Wang. Ceramic artist Mark Hewitt's work is also displayed at the gallery. Hours: Thur.-Sat., 11am-5pm & Sun., noon-5pm. Contact: 910/707-4336 or at (www.beckfineart.com).

Bottega Art & Wine Gallery, 723 N. 4th Street, Wilmington. **Ongoing** - Featuring works by regional and international artists in a variety of media. Hours: Tue.-Wed., 1-10pm and Thur-Sat., 1pm-midnight. Contact: 910/399-4872 or at (www.bottegageallery.com).



Work from Charles Jones African Art

Charles Jones African Art, 311 Judges Road, Unit 6-E, Wilmington. **Ongoing** - A gallery

dedicated to the traditional arts of West and Central Africa, with over 35 years experience in building fine collections for collectors and museums. Inquiries are welcome. Consultation, research and appraisal services available for individuals, estates and institutions by ISA certified appraiser, Maura Kropke. Exhibitions arranged and curated with essays by major scholars. Hours: Mon.-Fri., 7:30am-4:30pm. Contact: 910/794-3060 or at (<https://charles-jonesafricanart.com/>).

Dan Beck Studio, 857 Village Road, Leland. **Ongoing** - features some of the best in national talent for representational and abstract art. Being the studio of award-winning artist, Dan Beck. The other exceptionally talented and accomplished resident artists include Kari Feuer, Susan Fishbein, Ann Hair, Pappy Khouri, Heidi-Lee Peach, Ora Sorensen, Peggy Vineyard and Jenny McKinnon Wright. Current guest artists are celebrated painters Richard Oversmith and Jove Wang. Ceramic artist Mark Hewitt's work is also displayed at the gallery. Hours: Thur. - Sat., 11am-5pm; Sun. noon-5pm; and 4th Fri., 6-9pm. Contact: 910-299-8288 or at (www.beckfineart.com).

Eclipse Artisan Boutique, 203 Racine Drive, Wilmington. **Ongoing** - Eclipse is an artisan boutique in Wilmington, NC, filled with one of a kind eclectic pieces, original fine art, North Carolina pottery, and custom furniture from local and regional artisans. A gallery with a personality all its own! Hours: Mon.-Fri., 10am-6pm; Sat., 10am-5pm & Sun., noon-5pm. Contact: 910/799-9883 or at (eclipseartisanboutique.com).

ERA 20th Century Furniture and Art Gallery, 523 South 3rd St., Wilmington. **Ongoing** - Inviting emerging artists of all sorts, to fill the quiet space with cutting edge art that not only is pleasant to view, but also thought-provoking. Unique modern furnishings from the mid-20th century complement the contemporary art. Hours: Wed.-Sat., 11am-5pm or by appt. Contact: 910/612-0542.

Gallery Citrine, 17 S 2nd Street, Wilmington. **Through Sept. 29** - "Cape Fear Landmarks". **Ongoing** - Featuring works by BJ Grimmer, PD Chisholm, Kathy Schrum Peck, Nancy Lang Miller, Brooke Eagle, Deb Williams, Meroe Wheatley, Sue Cunningham, Chris Pfund, Donna Launey, and Robin Jones. Hours: Thur.-Sun., noon-4:30pm or by appt. Contact: e-mail to (gallerycitrine@gmail.com) or at (<https://gallerycitrine.com/>).

Janet B. Sessoms Studio@ the ArtWorks, 200 Willard Street, Wilmington. **Ongoing** - Featuring works by Janet B. Sessoms. Hours: call for hours. Contact: 910/840-0208, e-mail at (jbsessoms47@ec.rr.com) or at (www.janetb-sessoms.com).

MoMentum Companies, 103 South Front Street, Wilmington. **Through Sept. 16** - Featuring the original artwork of John Sharkey and Kirah Van Sickle, in collaboration with Art in Bloom and MoMentum Companies. Hours: Mon-Fri., 9am-3pm and on 4th Fri., from 6-9pm. Contact: 484/885-3037 (mobile) or visit (<https://aibgallery.com/>).

New Elements Gallery, 271 North Front Street, Wilmington. **Through Sept. 27** - "Summoned," featuring works by Donald Furst & Yifenn Strickland. **Ongoing** - Featuring works by regional and nationally recognized artists. We offer a wide variety of contemporary fine art and craft, including paintings, sculpture, ceramics, glass, fiber, jewelry and wood. Hours: Tue-Sat., 11am-6pm or by appt. Contact: 910/343-8997 or at (www.newelementsgallery.com).

Port City Pottery & Fine Crafts, at The Cotton Exchange, 307 North Front Street, Wilmington. **Ongoing** - Celebrating ten years in business, Port City Pottery & Fine Crafts, in the historic Cotton Exchange in downtown Wilmington, is the first gallery in Wilmington dedicated exclusively to local, handmade, one-of-a-kind, three-dimensional art and craft by jury-selected coastal North Carolina artisans. We present decorative and functional works in clay, fiber/textiles, gourds, baskets, jewelry, mixed media, glass and wood in a beautiful setting in this early 20th century historic building. Handmade objects, whether held, worn, or displayed, enrich our lives by connecting us with our humanity, creativity, and our history. It is evident when you enter Port City Pottery & Fine Crafts that all of the Gallery members are pursuing not only art but their passion. Hours: Mon-Sat., 10am-5:30pm & Sun. noon-4pm. Contact: 910/763-7111 or at (www.portcitypottery.com).

Sarah Diana Fine Art, 19 Market Street B., Wilmington. Apr. 5 - Grand Opening. **Ongoing** - Sarah Diana Herzog is a self taught artist, mediocre handy woman, mom of two amazing humans, and lover of all things that bring people joy. My sunlit studio is nestled in Historic Downtown Wilmington - where I call "home." I

have been painting professionally for five years, and my passion is to develop lasting relationships with art lovers and collectors. I value connecting on a personal level through meaningful conversation with clients. Hours: daily 10am-5pm. Contact: 910/619-0287 or at (sarahdianafineart.com).

Soda Pop Gallery, 1120 Princess Street, Soda Pop District, Wilmington. **Ongoing** - Featuring works by Mark Weber, Todd Cariganan, Jean Dobbs Fonvielle, Jonathan Summit, and Eleanor Gaynor. Hours: Thur.-Fri., 10am-2pm; Sat., noon-3pm; & 4th Fri., 6-9pm or by appt. Contact: 910/4-9-5628.

The Art Factory, 21 Surry Street, Wilmington. **Ongoing** - We are located in the warehouse district on the edge of beautiful Historic Downtown Wilmington, North Carolina. In addition to our retail galleries, the Art Factory Gallery houses a number of studios for working artists and a Wine Bar featuring distinctive Yadkin Valley North Carolina wines, available by the glass while you enjoy the galleries. Hours: call about hours. Contact: 910/399-3793 or visit (<https://www.facebook.com/ArtFactoryGallery/>).

The ArtWorks, 200 Willard Street, Wilmington. **Through Nov. 11** - "Flights of Fancy." This exhibition encompasses fantastical and whimsical ideas. The pieces will be straight from the imagination of our creative artists. **Ongoing** - In Gallery Verrazzano, we feature all the art created by the ArtWorks™ Artists and visiting Artists. The gallery features different mediums throughout the gallery! You are free to walk around and admire or even purchase the art work around the gallery. **Ongoing** - The ArtWorks is an art village providing art studios, gallery space, and an event venue; fostering a creative environment for artists, educational opportunities, and enhancement of the Wilmington community, through art. Our Mission is to enhance the community, assist the artist, contribute to the revitalization of downtown Wilmington, to preserve Wilmington's commercial landmarks, and to increase the livelihood of local artists and provide a place to create and display all types of art. Hours: Wed., 11am-5pm and 2nd & 4th Saturdays, 10am-3 or by appt. Contact: 910/352-7077 or at (<http://www.theartworks.co/>).

The Golden Gallery, @ The Cotton Exchange, 307 N. Front St., Wilmington. **Ongoing** - Featuring works by John W. Golden and Mary Ellen Golden. Hours: Mon.-Sat., 10am-5:30pm & Sun., 1-4pm. Contact: 910/762-4651 or at (www.thegoldengallery.com).

Alternative Art Spaces - Wilmington
IntraCoastal Reality Corporation, 228 N. Front Street, Suite 101, Wilmington. **Through Sept. 27** - "Architectural Impulses," featuring works by Elyse Watkins. Hours: Mon.-Sun., 9am-5pm. Contact: 910/256-4503.

The Gallery at the Courtyard by Marriott, Carolina Beach Oceanfront, 100 Charlotte Avenue, Carolina Beach. **Through Sept. 27** - Featuring works by members of the Island Arts Council. The Gallery at the Courtyard is a unique collaboration with the Island Arts Council. Over 20 local artists have more than 50 fine art and fine craft pieces on display throughout the summer. These pieces are for sale too! The artists will be bringing new work to keep the exhibition fresh and exciting. So plan to visit often. Hours: regular hotel hours. Contact: at (<https://islandartscouncil.net/>) or e-mail to (info@islandartscouncil.net).

Wilson

Artisan Leaf, 113/115 Tarboro Street SW, Wilson. **Ongoing** - We have reimagined tobacco as a decorative surface, taking this innately unique leaf and applying it to make one-of-a-kind tobacco leaf furniture, panels, architectural components and decorative accessories. Offering a naturally inspired vision, our products are available in a variety of stunning shades and tones providing a timeless look. Contemporary or traditional, sophisticated or rustic, Artisan Leaf will enhance any room or space. Hours: Wed.-Fri., 2-5:30pm & Sat., noon-5pm. Contact: 252/674-1223 or at (<https://artisanleaf.com/>).

Burk Uzzle Studio, 106 Douglas Street E, Wilson. **Ongoing** - Burk Uzzle's career, like his pictures, is a nuanced composition blending American culture, individual psyches of particular places and people, and an atypical way of seeing ourselves, our values, and our community. Always respectful yet locating the poignant or quirky, the history of his narrative belongs to all of us. Initially grounded in documentary photography when he was the youngest photographer hired by "LIFE magazine" at age 23, his work grew into a combination of split-second impressions reflecting the human condition during his tenure as a member of the prestigious international Magnum cooperative founded by one of his mentors Henri Cartier-Bresson. His archive

continued on Page 72